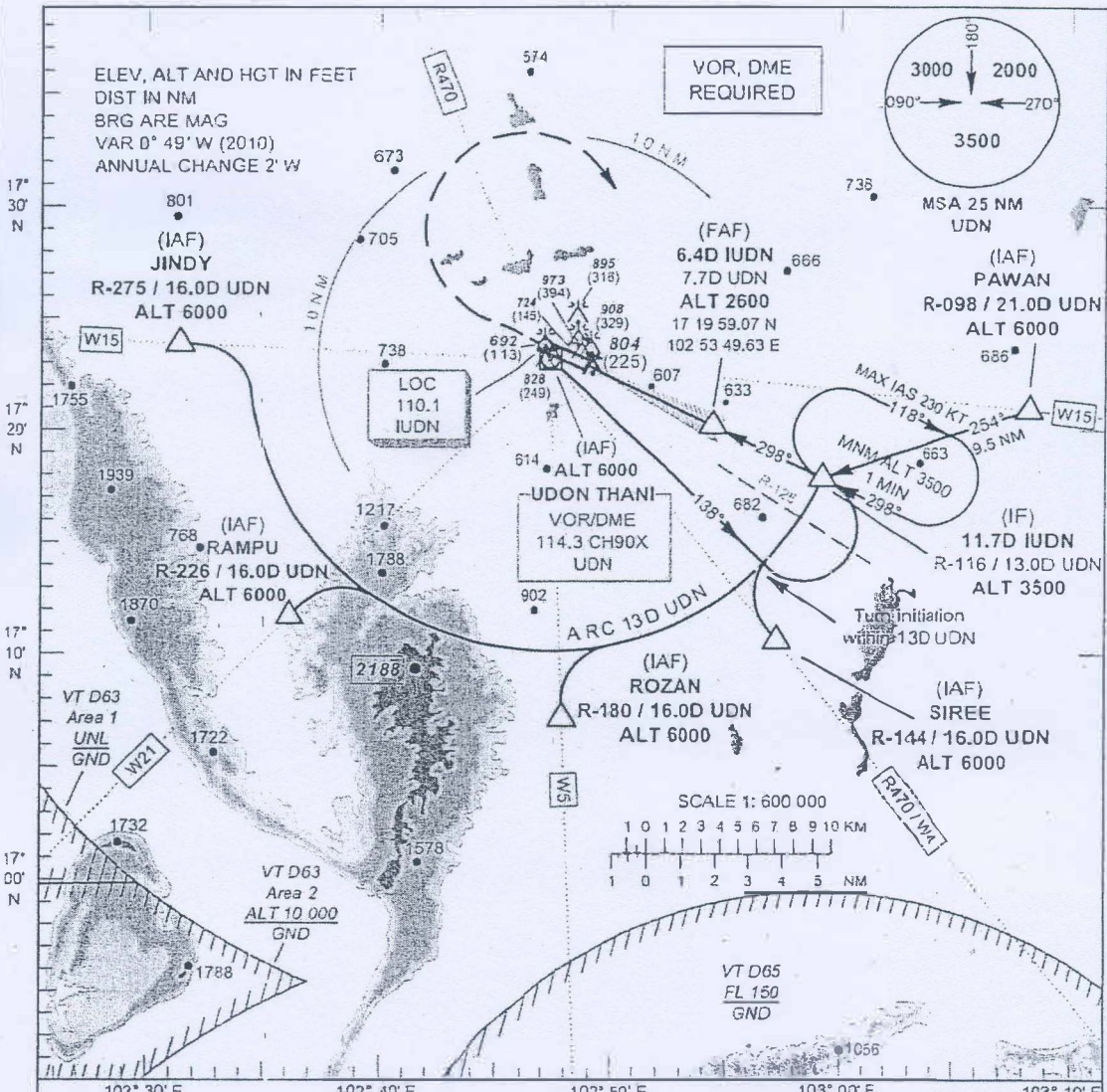


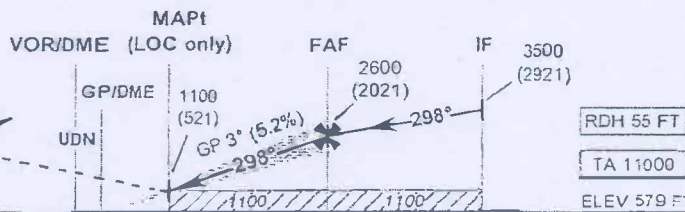
**INSTRUMENT APPROACH CHART - ICAO**  
**AERODROME ELEV 579 FT**  
**HEIGHTS RELATED TO THR RWY 30 - ELEV 579 FT**

APP : 126.2, 265.9  
 TWR : 122.5, 355.4  
 GND : 121.9, 275.8

**UDON THANI / Udon thani (VTUD)**  
 ILS or LOC RWY30



**MISSED APPROACH:**  
**No turn before MAPt**  
 Climb straight ahead to 1900 (1321) FT then turn right to IF at 3500 (2921) FT and hold or as directed by ATC.



DME FM GP	0	1.7	6.4	11.7
DME FM VOR	0	3.0	7.7	13.0
NM FM THR	0	1.5	6.2	11.5

OCA/H		A	B	C	D	Distance (IUDN)	1.7 D	2 D	3 D	4 D	5 D	6 D	FAF
Straight-in Approach	CAT I	840	850	860	870	Altitude (Height)	1100	1205	1525	1845	2160	2480	2600
		(261)	(271)	(281)	(291)		(521)	(626)	(946)	(1266)	(1581)	(1901)	(2021)
LOC only		1100 (521)				Ground speed (GS)	knot	100	120	140	160	180	200
Circling* (OCH AAL)		1300 (721)					Rate of descent (ft/min)	530	630	740	845	950	1055

\*FOR CIRCLING RESTRICTIONS SEE VERSO