

**INSTRUMENT APPROACH CHART-ICAO**

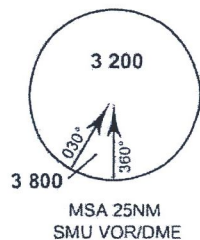
**AERODROME ELEV 64 FT**  
 HEIGHTS RELATED TO AERODROME ELEV

APP : 129.6, 305.4  
 TWR : 118.9  
 GND : 121.9  
 ATIS : 128.6

**SURATTANI/Samui (VTSM)**  
 VOR A RWY 17  
 CAT A,B

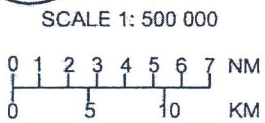
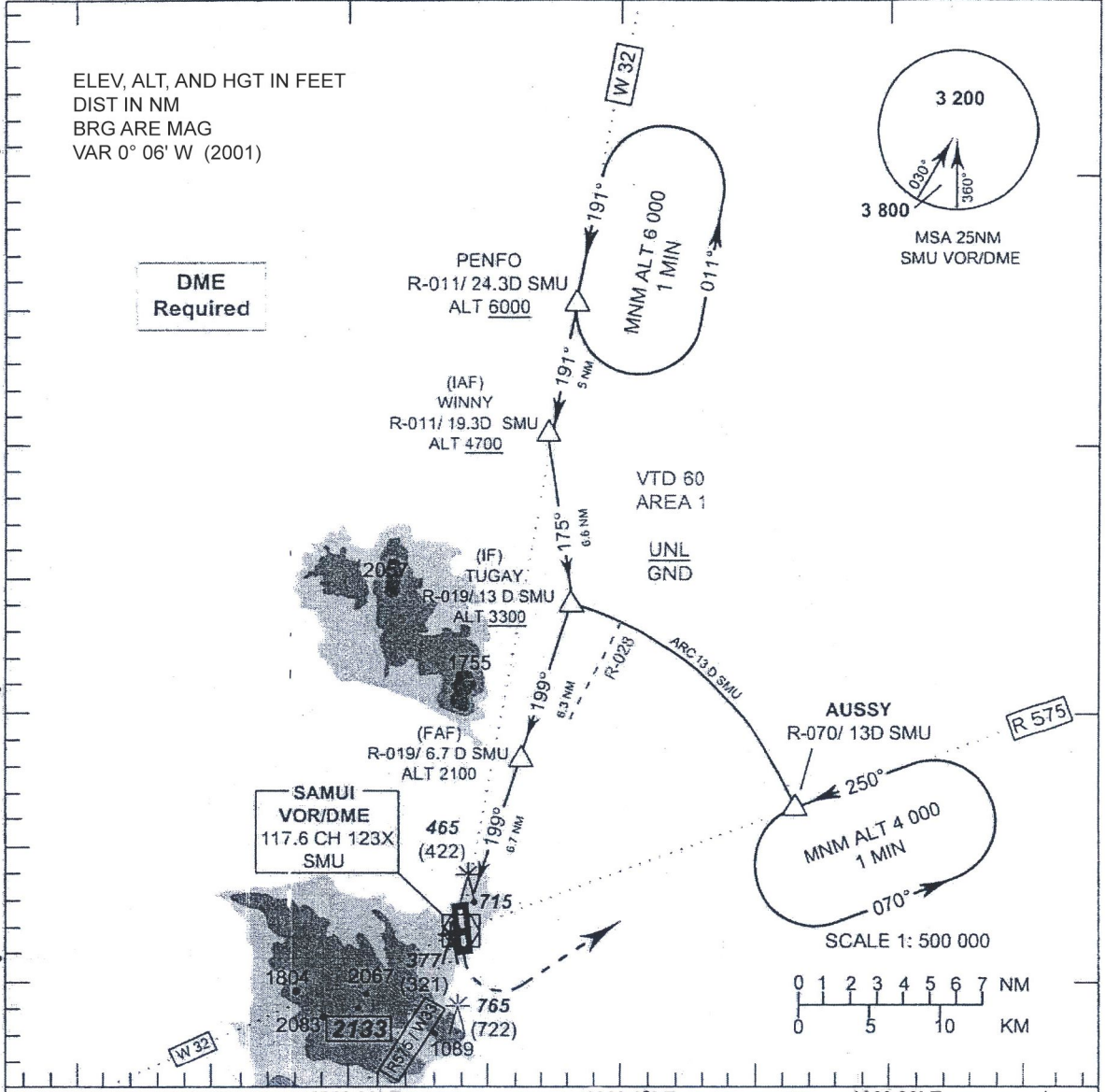
ELEV, ALT, AND HGT IN FEET  
 DIST IN NM  
 BRG ARE MAG  
 VAR 0° 06' W (2001)

**DME Required**



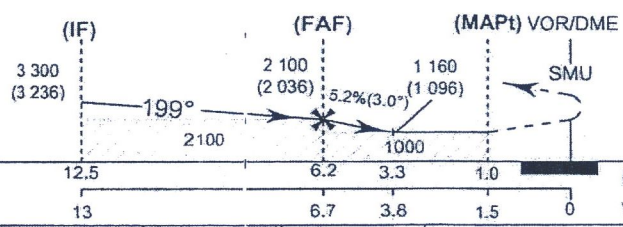
10° 00' N  
 09° 50' N  
 09° 40' N  
 09° 30' N

99° 50' E      100° 00' E      100° 10' E      100° 20' E



**TA 11 000**

**Missed Approach :**  
 Climb straight ahead to SMU VOR, then turn left to intercept R-070 (SMU) proceed to AUSSY continue climb to 4000 FT and hold or as directed by ATC.



ELEV 43 FT  
 (THR RWY 17)

OCA/H	A	B	Distance(SMU)		6.7 DME	6 DME	5 DME	3.8 DME		
			Altitude (Height)		2100 (2036)	1870 (1806)	1550 (1486)	1160 (1096)		
Straight-in approach	NOT AUTHORIZED		Ground Speed (GS)	knot	100	120	140	160	180	200
			Circling* (OCH AAL)	1'60 (1096)		FAF-MAPt 5.2 NM	(min/s)	3:07	2:36	2:14
* ,FOR CIRCLING RESTRICTIONS SEE VERSO			Rate of descent	(ft/min)	530	640	745	850	955	1 060