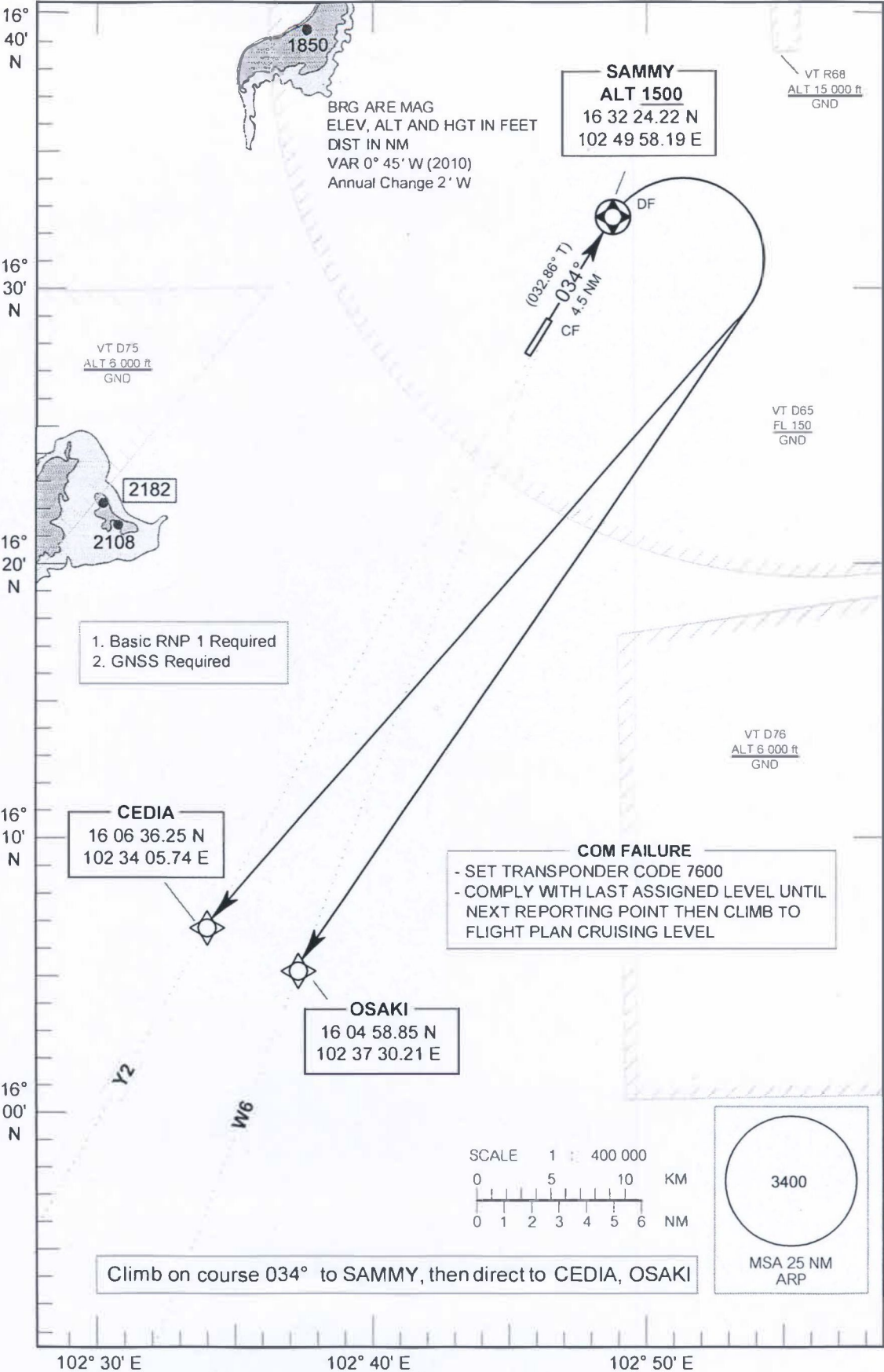


**STANDARD DEPARTURE CHART -
INSTRUMENT (SID) - ICAO**

APP : 123.4 , 240.0
TWR : 122.25 , 236.6

**KHON KAEN / Khon Kaen (VTUK)
RNAV RWY 03
CEDIA 1A
OSAKI 1A**

TRANSITION ALTITUDE
11000 FT



BRG ARE MAG
ELEV, ALT AND HGT IN FEET
DIST IN NM
VAR 0° 45' W (2010)
Annual Change 2' W

SAMMY
ALT 1500
16 32 24.22 N
102 49 58.19 E

VT R68
ALT 15 000 ft
GND

VT D75
ALT 6 000 ft
GND

VT D65
FL 150
GND

2182

1. Basic RNP 1 Required
2. GNSS Required

VT D76
ALT 6 000 ft
GND

CEDIA
16 06 36.25 N
102 34 05.74 E

COM FAILURE
- SET TRANSPONDER CODE 7600
- COMPLY WITH LAST ASSIGNED LEVEL UNTIL
NEXT REPORTING POINT THEN CLIMB TO
FLIGHT PLAN CRUISING LEVEL

OSAKI
16 04 58.85 N
102 37 30.21 E



3400
MSA 25 NM
ARP

Climb on course 034° to SAMMY, then direct to CEDIA, OSAKI

102° 30' E 102° 40' E 102° 50' E

16° 40' N
16° 30' N
16° 20' N
16° 10' N
16° 00' N