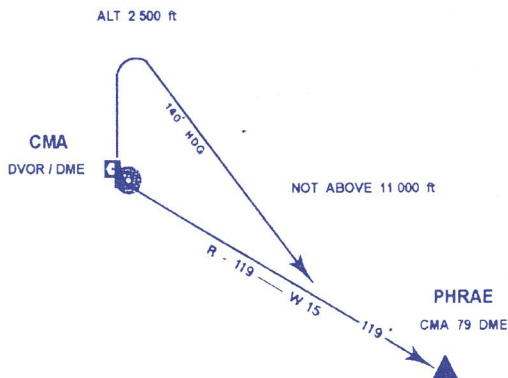


STANDARD INSTRUMENT DEPARTURE RUNWAY 36

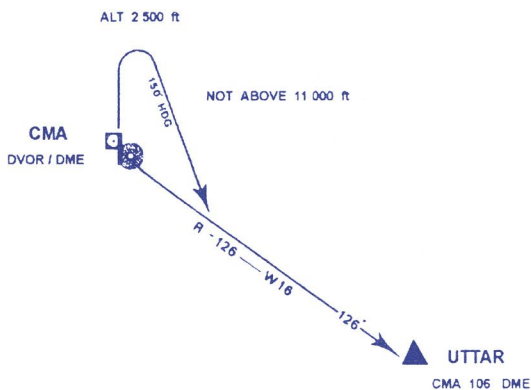
**PHRAE ONE BRAVO (PR 1 B)**

Departure gradient 3.3% take off, climb runway heading until 2 500 FT, or above, then turn right heading 140° to intercept and proceed on CMA R-119 not above 11 000 FT. Expect radar control. Contact Chiang Mai Radar on 129.6, 305.4 MHZ after take-off.



**UTTAR ONE BRAVO (UTTAR 1 B)**

Departure gradient 3.3% take off, climb runway heading until 2 500 FT, or above, then turn right heading 150° to intercept and proceed on CMA R-126 not above 11 000 FT. Expect radar control. Contact Chiang Mai Radar on 129.6, 305.4 MHZ after take-off.



**CHIANG RAI ONE BRAVO (CTR 1 B)**

Departure gradient 3.3% take off, climb runway heading until 2 500 FT, or above, then turn right heading 060° to intercept and proceed on CMA R-036 not above 11 000 FT. Expect radar control. Contact Chiang Mai Radar on 129.6, 305.4 MHZ after take-off.

