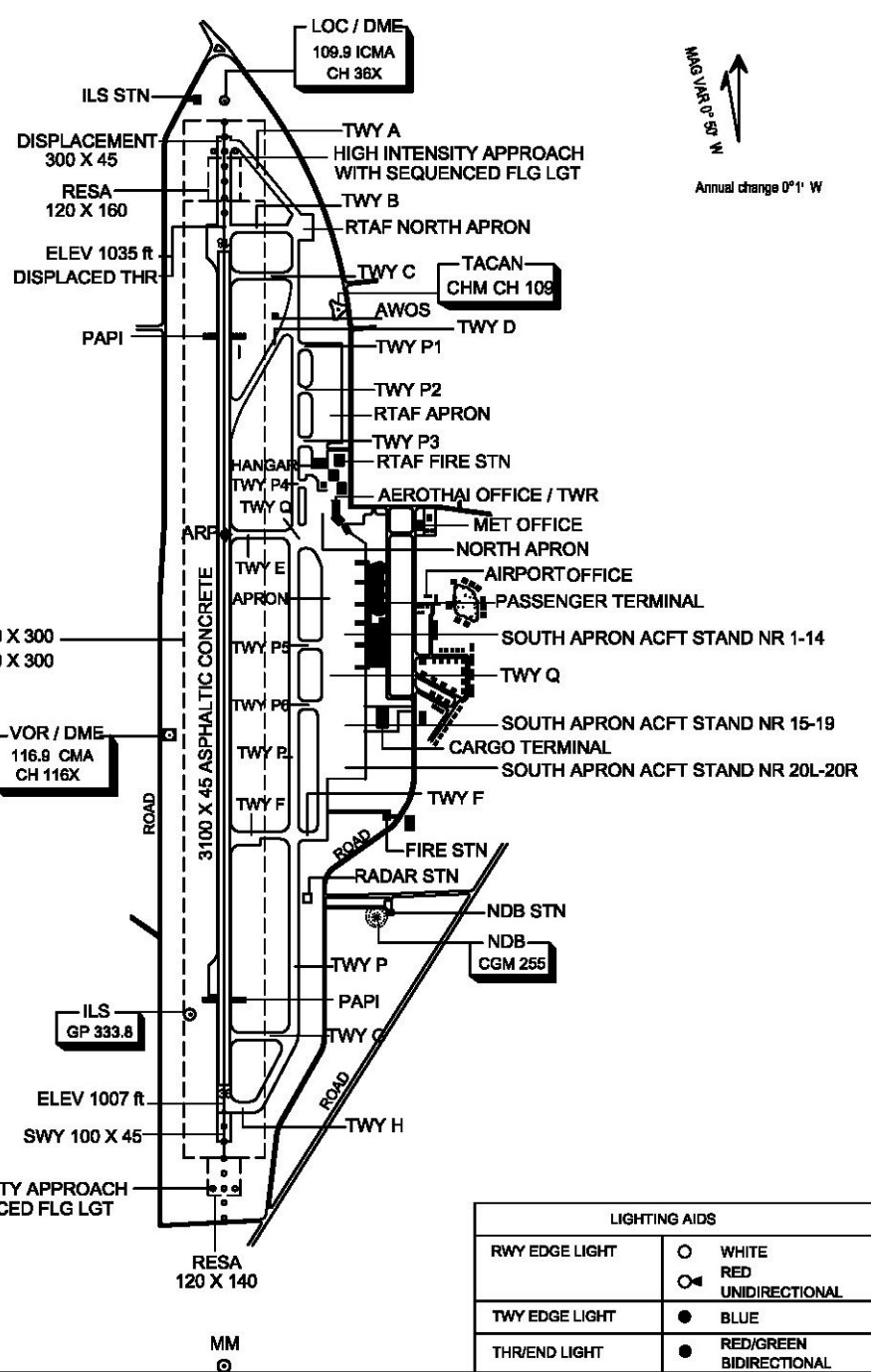
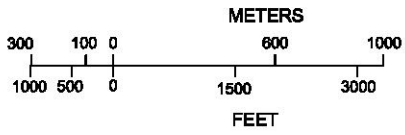


| RWY | DIRECTION | THR | BEARING STRENGTH |
|--|-----------|--------------------------------|------------------|
| 18 | 180 | 18 46 51.81 N 98 57 46.51 E | PCN 59/F/A/X/T |
| 36 | 360 | 18 45 10.95 N 98 57 46.26 E | |
| RWY EXTENSION (DISPLACEMENT AREA 300 m. BEFORE THR 18) | | | PCN 70/R/B/W/T |
| TAXIWAY A | | | PCN 70/R/B/W/T |
| TAXIWAY F,H,Q,P | | | PCN 88/R/D/X/T |
| RAPID EXIT TAXIWAY (TWY D) | | | PCN 85/F/C/Y/T |
| TAXIWAY B,C,E,G,P5,P6 | | | PCN 59/F/A/X/T |
| NORTH APRON | | | PCN 29/R/D/Y/T |
| SOUTH APRON ACFT STAND NR 1-14 | | | PCN 78/R/C/X/T |
| SOUTH APRON ACFT STAND NR 15-19 | | | PCN 62/R/B/X/T |
| SOUTH APRON ACFT STAND NR 20L-20R | | | PCN 89/R/B/W/T |
| RTAF NORTH APRON | | | 672 000 lbs |

ELEVATIONS IN FEET AND DIMENSIONS IN METRES
BEARING ARE MAGNETIC

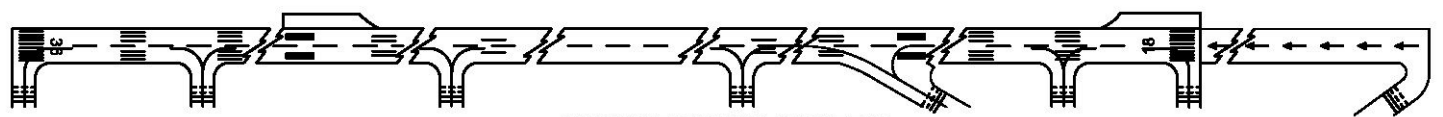
RWY STRIP RWY 18 3620 X 300
RWY STRIP RWY 36 3320 X 300



MAG VAR 0° 50' W
Annual change 0° 1' W

| LIGHTING AIDS | |
|----------------|---------------------------------|
| RWY EDGE LIGHT | ○ WHITE ◐ RED UNIDIRECTIONAL |
| TWY EDGE LIGHT | ● BLUE |
| THR/END LIGHT | ● RED/GREEN BIDIRECTIONAL |

MARKING AIDS RWY 18/36 AND EXIT TWY



LIGHTING AIDS RWY 18/36 AND EXIT TWY

