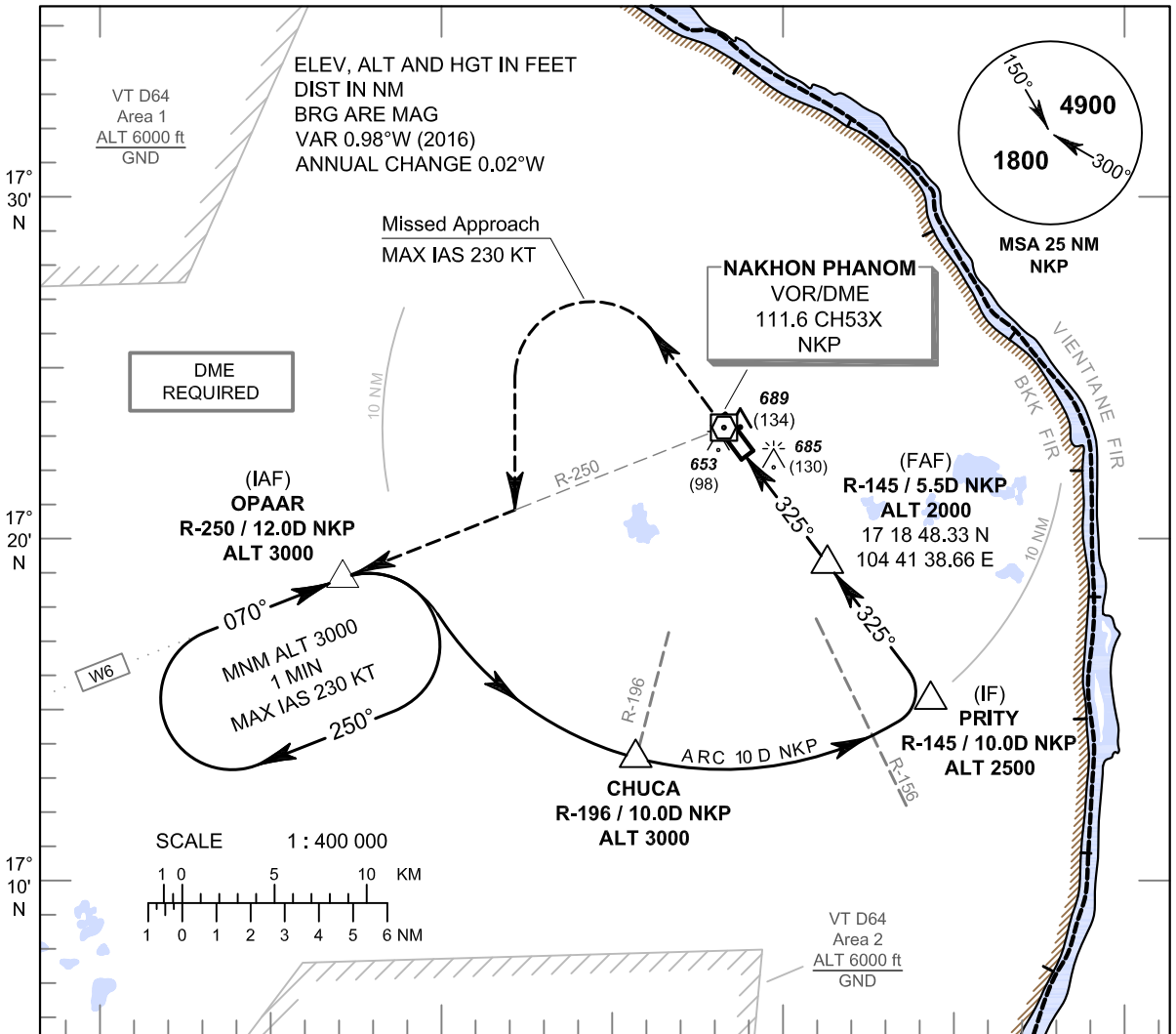


**INSTRUMENT APPROACH CHART - ICAO**

**AERODROME ELEV 587 FT**  
**HEIGHTS RELATED TO THR RWY33 - ELEV 555 FT**

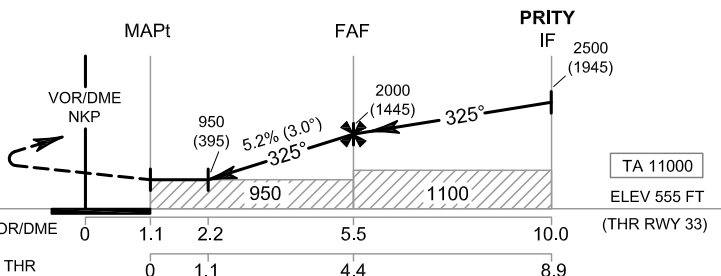
APP : 123.35 , 284.0  
 TWR : 122.5  
 GND : 121.9

**NAKHON PHANOM / Nakhon Phanom (VTUW)**  
**VOR RWY33**



**MISSED APPROACH :**

**No turn before MAPt.**  
**Speed restricted to MAX IAS 230 KT until after turn.**  
 Climb straight ahead to 2400 FT then turn left to intercept outbound R-250 NKP VOR then proceed to OPAAR at 3000 FT and hold or as directed by ATC.



OCA/H	A	B	C	D	Distance to NKP	2.2 D	3 D	4 D	5 D	FAF		
Straight - in Approach	950 (395)				Altitude (Height)	950 (395)	1205 (650)	1520 (965)	1835 (1280)	2000 (1445)		
					Ground speed	knot	70	90	100	120	140	160
Circling (OCH AAL)	1100 (513)		1300 (713)		Rate of descent (5.2%)	(ft/min)	369	474	527	632	737	843

CHANGE : MAG VAR. ANNUAL CHANGE. WPT NAME. IAF AND IF ALT.