

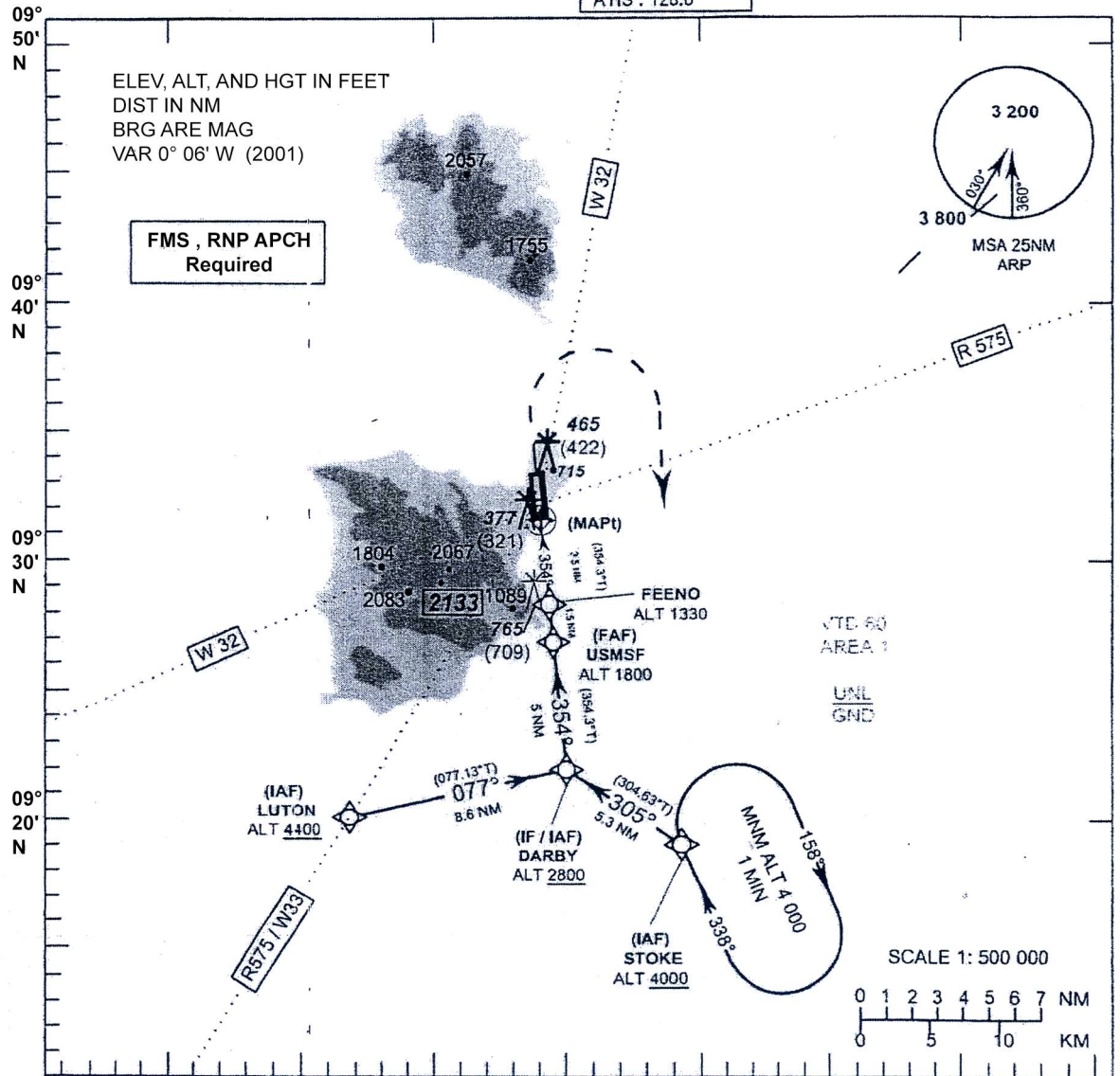
INSTRUMENT APPROACH CHART-ICAO **AERODROME ELEV 64 FT**
 HEIGHTS RELATED TO THR RWY 35 ELEV 56 FT

APP : 129.6, 305.4
 TWR : 118.9
 GND : 121.9
 ATIS : 128.6

SURATTANI/Samui (VTSM)
 RNAV (GNSS) RWY 35
 CAT C

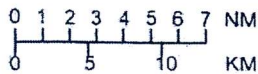
ELEV, ALT, AND HGT IN FEET
 DIST IN NM
 BRG ARE MAG
 VAR 0° 06' W (2001)

FMS , RNP APCH Required



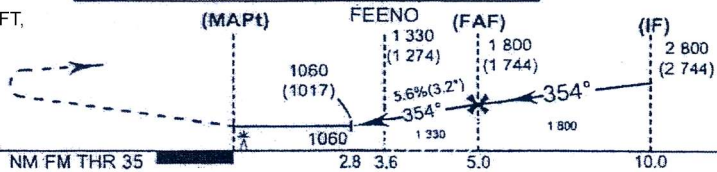
NOTE: 60 AREA 1
 UNL GND

SCALE 1: 500 000



Missed Approach :
 Climb straight ahead to ALT 1400 FT,
 then turn right direct to STOKE at 4000 FT,
 and hold or as directed by ATC.

Remark: During trial, operate under VMC only and reduce max cross wind limitation by 10 knots. **TA 11 000**



ELEV 56 FT
 (THR RWY 35)

CHANGE : PAGE NUMBER CHANGED.

OCA/H	C	Distance to THR							
		2.8 NM	3 NM	3.6 NM	4 NM	FAF			
RNAV	1060 (1004)	Altitude (Height)	1060 (1004)	1130 (1074)	1330 (1274)	1470 (1414)	1800 (1744)		
Circling*	1160 (1096)	Ground Speed (GS)	knot	100	120	140	160	180	200
* FOR CIRCLING RESTRICTIONS SEE VERSO		FAF-MAPt 5 NM	(min/s)	3:00	2:30	2:09	1:53	1:40	1:30
		Rate of descent	(ft/min)	565	680	795	905	1020	1135