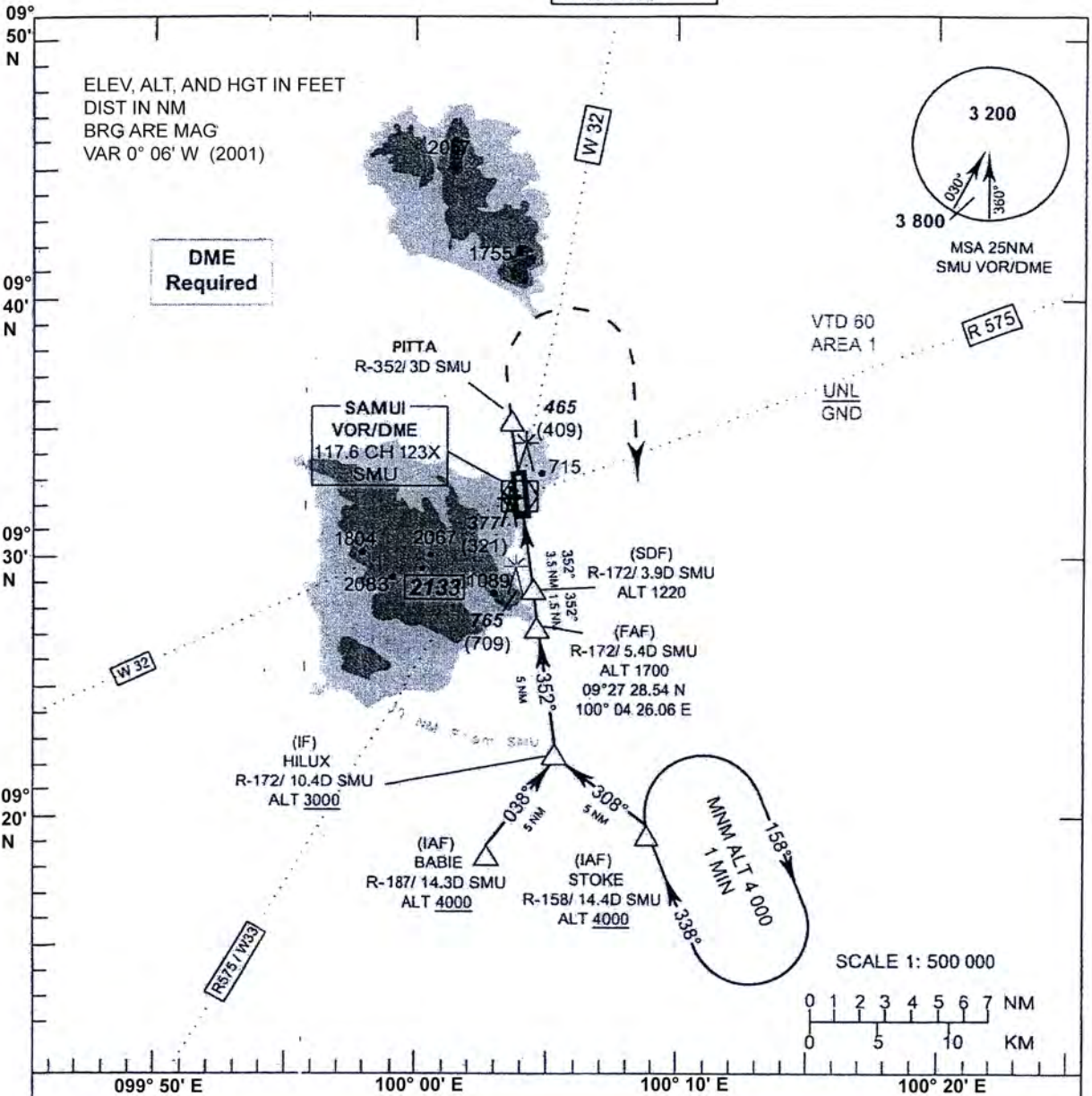


**INSTRUMENT APPROACH CHART-ICAO**

**AERODROME ELEV 64 FT**  
**HEIGHTS RELATED TO THR RWY 35 ELEV 56 FT**

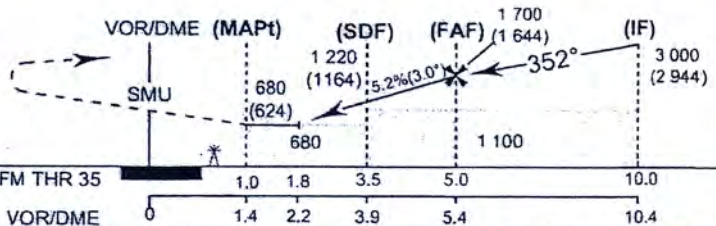
APP : 129.6, 305.4  
 TWR : 118.9  
 GND : 121.9  
 ATIS : 128.6

**SURATTANI/Samui (VTSM)**  
**VOR RWY 35**  
**CAT A,B**



**TA 11 000**

**Missed Approach :**  
 Climb straight ahead to 3 DME,  
 then turn right to intercept R-158(SMU)  
 proceed to **STOKE** at 4000 FT and hold  
 or as directed by ATC



OCA/H	A	B	Distance(SMU)	2.2 DME	3 DME	4 DME	5.4 DME			
Straight-in approach	680 (624)		Altitude (Height)	680 (624)	940 (884)	1260 (1204)	1700 (1644)			
	1160 (1096)		Ground Speed (GS)	knot	100	120	140	160	180	200
* FOR CIRCLING RESTRICTIONS SEE VERSO			FAF-MAPt 4 NM	(min/s)	2:24	2:00	1:43	1:30	1:20	1:12
			Rate of descent	(ft/min)	530	640	745	850	955	1 060