

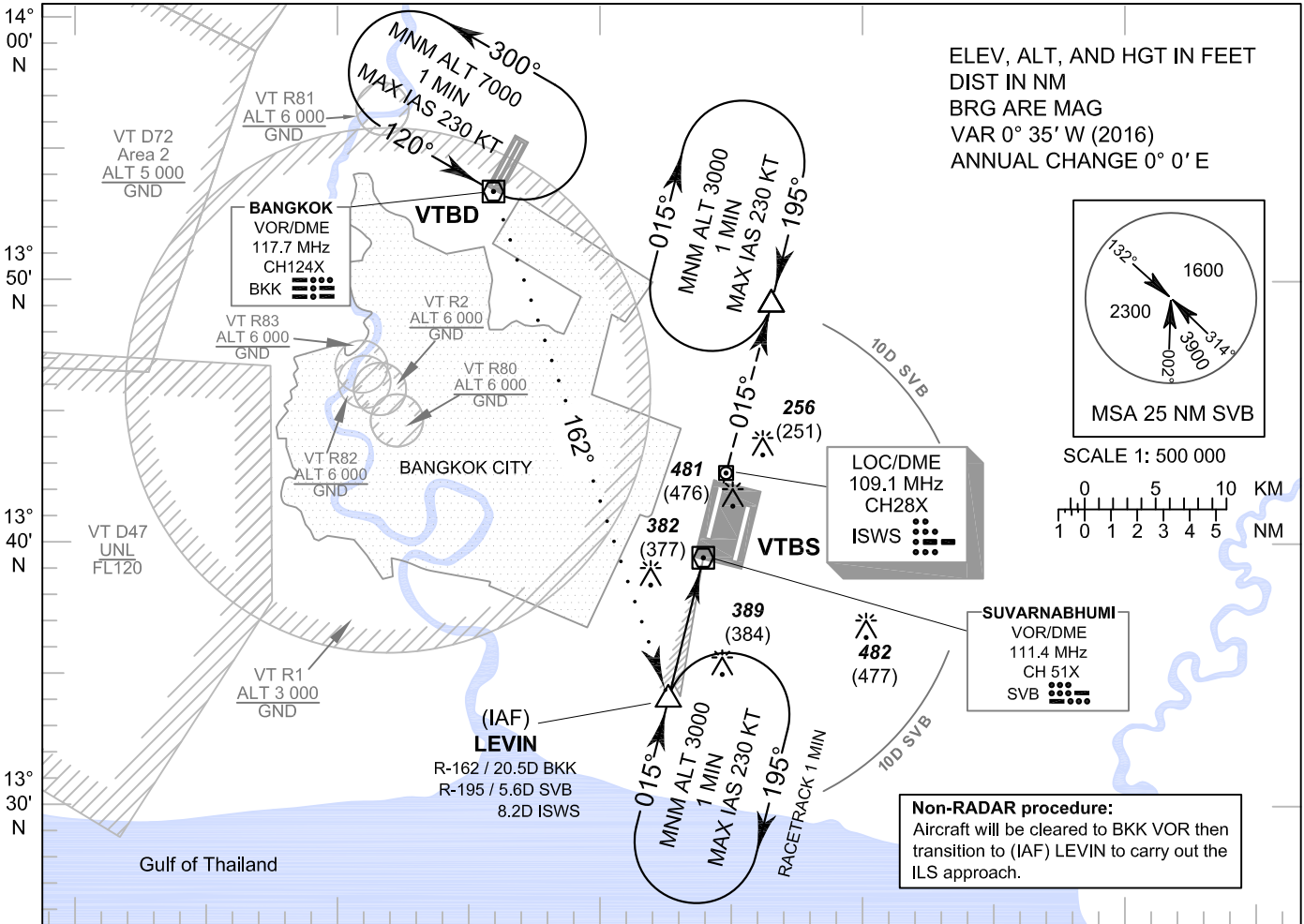
**INSTRUMENT
APPROACH
CHART - ICAO**

**AERODROME ELEV 5 FT
HEIGHTS RELATED TO
THR RWY01L - ELEV 5 FT**

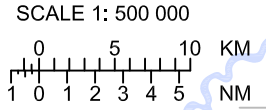
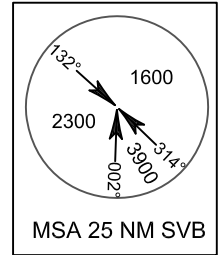
- APP : 119.1, 262.5
- : 120.3, 262.5
- : 121.7, 262.5
- : 122.35, 262.5
- : 124.35, 262.5
- : 125.2, 262.5
- ARR : 121.1
- : 126.3
- TWR : 118.2, 274.5
- : 119.0
- ATIS : 133.6, 278.6

BANGKOK / Suvarnabhumi Intl (VTBS)

**ILS or LOC y RWY01L
CAT II**

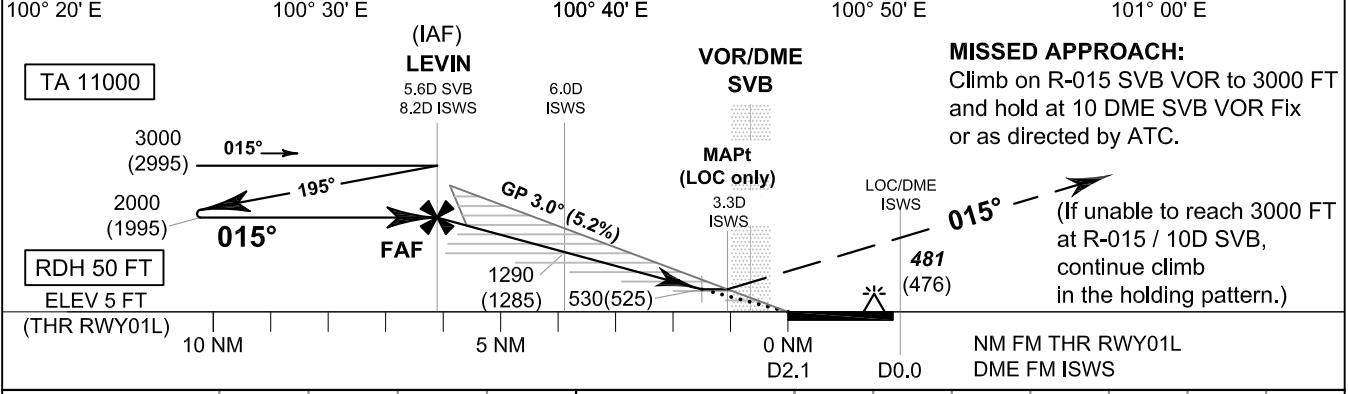


ELEV, ALT, AND HGT IN FEET
DIST IN NM
BRG ARE MAG
VAR 0° 35' W (2016)
ANNUAL CHANGE 0° 0' E



Non-RADAR procedure:
Aircraft will be cleared to BKK VOR then transition to (IAF) LEVIN to carry out the ILS approach.

CHANGE: REALIGNMENT. MISSED APPROACH INSTRUCTION.



MISSED APPROACH:
Climb on R-015 SVB VOR to 3000 FT and hold at 10 DME SVB VOR Fix or as directed by ATC.

(If unable to reach 3000 FT at R-015 / 10D SVB, continue climb in the holding pattern.)

OCA/H		A	B	C	D	ISWS DME	FAF	8.0	7.0	6.0	5.0	4.0	MAPt
Straight-in Approach	CAT I	230 (225)*				Altitudes	2000	1920	1610	1290	970	650	530
	CAT II	105 (100)**				Speed / Knots	100			120	140	160	180
LOC only		530 (525)				FAF-MAPt 4.9 NM			2 : 56	2 : 27	2 : 06	1 : 50	1 : 38
Circling (OCH AAL)		800 (795)		900 (895)		Rate of descent (ft/min)			530	640	745	850	955

*These procedures require a missed approach climb gradient of 5% (304 FT/NM) until passing ALT 1000 FT. For aircraft which only achieve a 2.5% (152 FT/NM) climb gradient, the CAT I OCA (OCH) is 370 (365) FT
 **These procedures require a missed approach climb gradient of 4% (243 FT/NM) until passing ALT 1000 FT. For aircraft which only achieve a 2.5% (152 FT/NM) climb gradient, the CAT II OCA (OCH) is 295 (290) FT