

**STANDARD DEPARTURE CHART-
INSTRUMENT (SID) - ICAO**

TRANSITION ALTITUDE
11000 FT

SPEED RESTRICTION
MAX IAS 250 KT AT OR
BELOW ALT 10000 FT
UNLESS OTHERWISE
AUTHORIZED BY ATC.

APP : 119.1, 262.5
: 119.4, 262.5
: 120.3, 262.5
: 121.7, 262.5
: 122.35, 262.5
: 124.35, 262.5
: 125.2, 262.5
DAR : 125.5, 262.5
TWR : 118.1, 236.6
ATIS : 126.4, 344.6

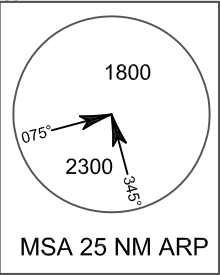
**BANGKOK/Don Mueang Intl (VTBD)
RNAV RWY21L**

ALBOS3C BONVO3C
NOBER3C NUNLI3C PASTO3C
ROBKA3C SEMBO3C TANGO3C
TARED3C TL3C UPKUP3C

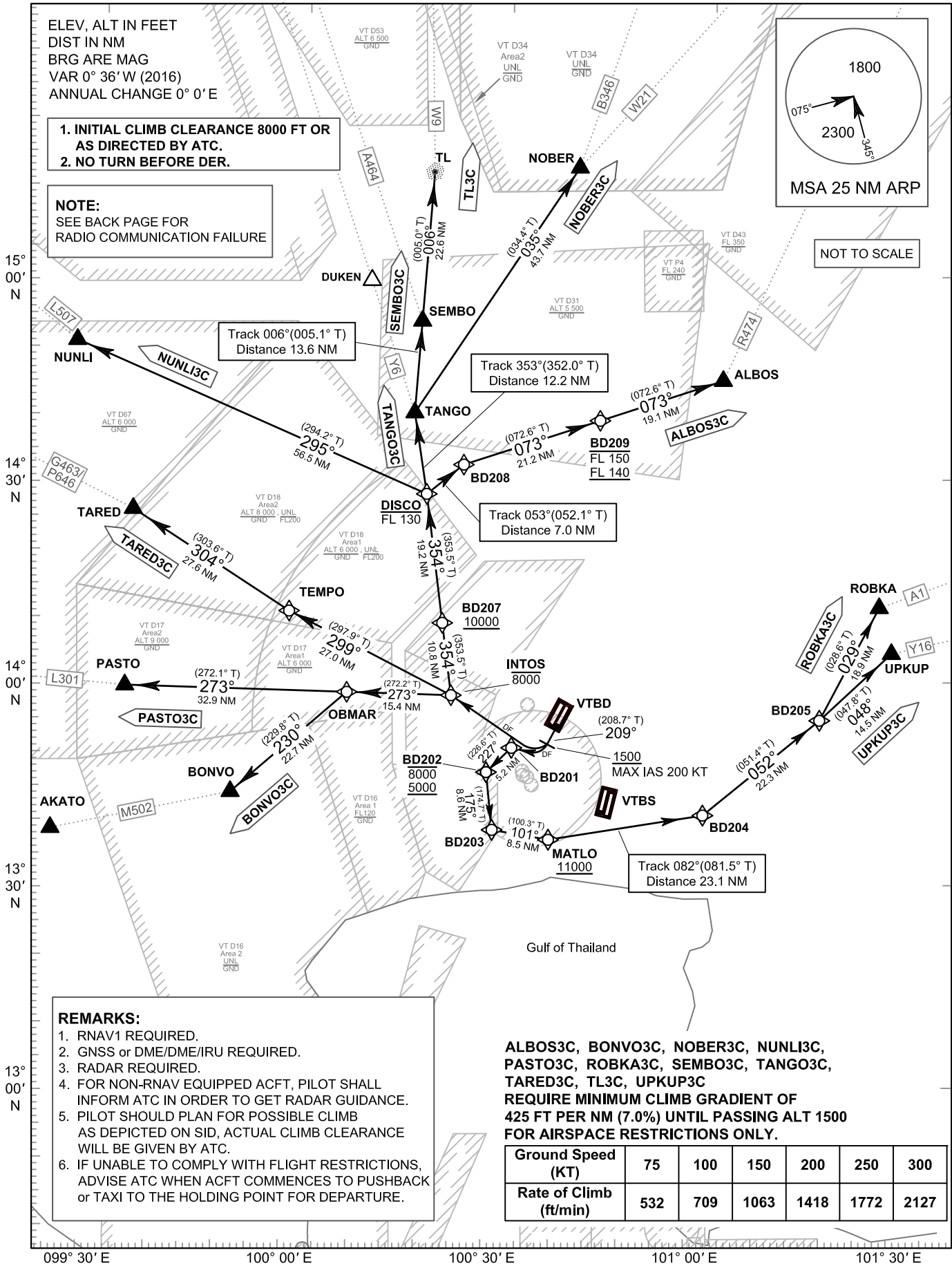
ELEV, ALT IN FEET
DIST IN NM
BRG ARE MAG
VAR 0° 36' W (2016)
ANNUAL CHANGE 0° 0' E

1. INITIAL CLIMB CLEARANCE 8000 FT OR AS DIRECTED BY ATC.
2. NO TURN BEFORE DER.

NOTE:
SEE BACK PAGE FOR
RADIO COMMUNICATION FAILURE



NOT TO SCALE



REMARKS:

1. RNAV1 REQUIRED.
2. GNSS or DME/DME/IRU REQUIRED.
3. RADAR REQUIRED.
4. FOR NON-RNAV EQUIPPED ACFT, PILOT SHALL INFORM ATC IN ORDER TO GET RADAR GUIDANCE.
5. PILOT SHOULD PLAN FOR POSSIBLE CLIMB AS DEPICTED ON SID, ACTUAL CLIMB CLEARANCE WILL BE GIVEN BY ATC.
6. IF UNABLE TO COMPLY WITH FLIGHT RESTRICTIONS, ADVISE ATC WHEN ACFT COMMENCES TO PUSHBACK or TAXI TO THE HOLDING POINT FOR DEPARTURE.

**ALBOS3C, BONVO3C, NOBER3C, NUNLI3C,
PASTO3C, ROBKA3C, SEMBO3C, TANGO3C,
TARED3C, TL3C, UPKUP3C
REQUIRE MINIMUM CLIMB GRADIENT OF
425 FT PER NM (7.0%) UNTIL PASSING ALT 1500
FOR AIRSPACE RESTRICTIONS ONLY.**

Ground Speed (KT)	75	100	150	200	250	300
Rate of Climb (ft/min)	532	709	1063	1418	1772	2127

CHANGE: NEW PROCEDURES.