

**STANDARD ARRIVAL CHART-
INSTRUMENT (STAR) - ICAO**

TRANSITION ALTITUDE 11000 FT
SPEED RESTRICTION MAX IAS 250 KT AT OR BELOW ALT 10000 FT UNLESS OTHERWISE AUTHORIZED BY ATC.

APP :	119.1, 262.5
	: 119.4, 262.5
	: 120.3, 262.5
	: 121.7, 262.5
	: 122.35, 262.5
	: 124.35, 262.5
	: 125.2, 262.5
DAR :	125.5, 262.5
TWR :	118.1, 236.6
ATIS :	126.4, 344.6

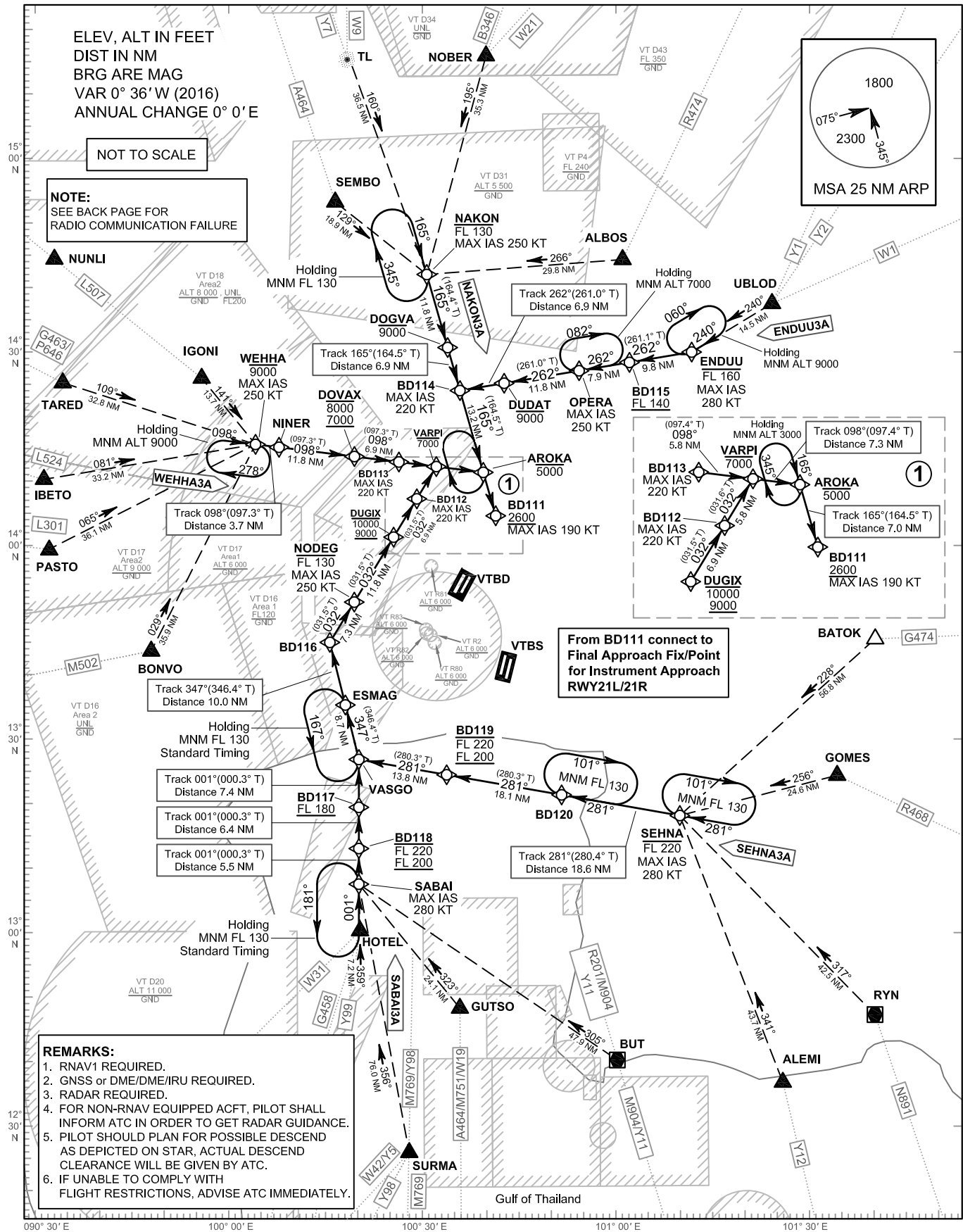
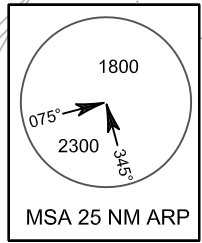
**BANGKOK/Don Mueang Intl (VTBD)
RNAV RWY21L/21R**

ENDUU3A NAKON3A
SABAI3A SEHNA3A WEHHA3A

ELEV, ALT IN FEET
DIST IN NM
BRG ARE MAG
VAR 0° 36' W (2016)
ANNUAL CHANGE 0° 0' E

NOT TO SCALE

NOTE:
SEE BACK PAGE FOR
RADIO COMMUNICATION FAILURE



From BD111 connect to
Final Approach Fix/Point
for Instrument Approach
RWY21L/21R

- REMARKS:**
1. RNAV1 REQUIRED.
 2. GNSS or DME/DME/IRU REQUIRED.
 3. RADAR REQUIRED.
 4. FOR NON-RNAV EQUIPPED ACFT, PILOT SHALL INFORM ATC IN ORDER TO GET RADAR GUIDANCE.
 5. PILOT SHOULD PLAN FOR POSSIBLE DESCEND AS DEPICTED ON STAR, ACTUAL DESCEND CLEARANCE WILL BE GIVEN BY ATC.
 6. IF UNABLE TO COMPLY WITH FLIGHT RESTRICTIONS, ADVISE ATC IMMEDIATELY.

CHANGE: Y5, Y98 AND Y99 ADDED.

090° 30' E 100° 00' E 100° 30' E 101° 00' E 101° 30' E