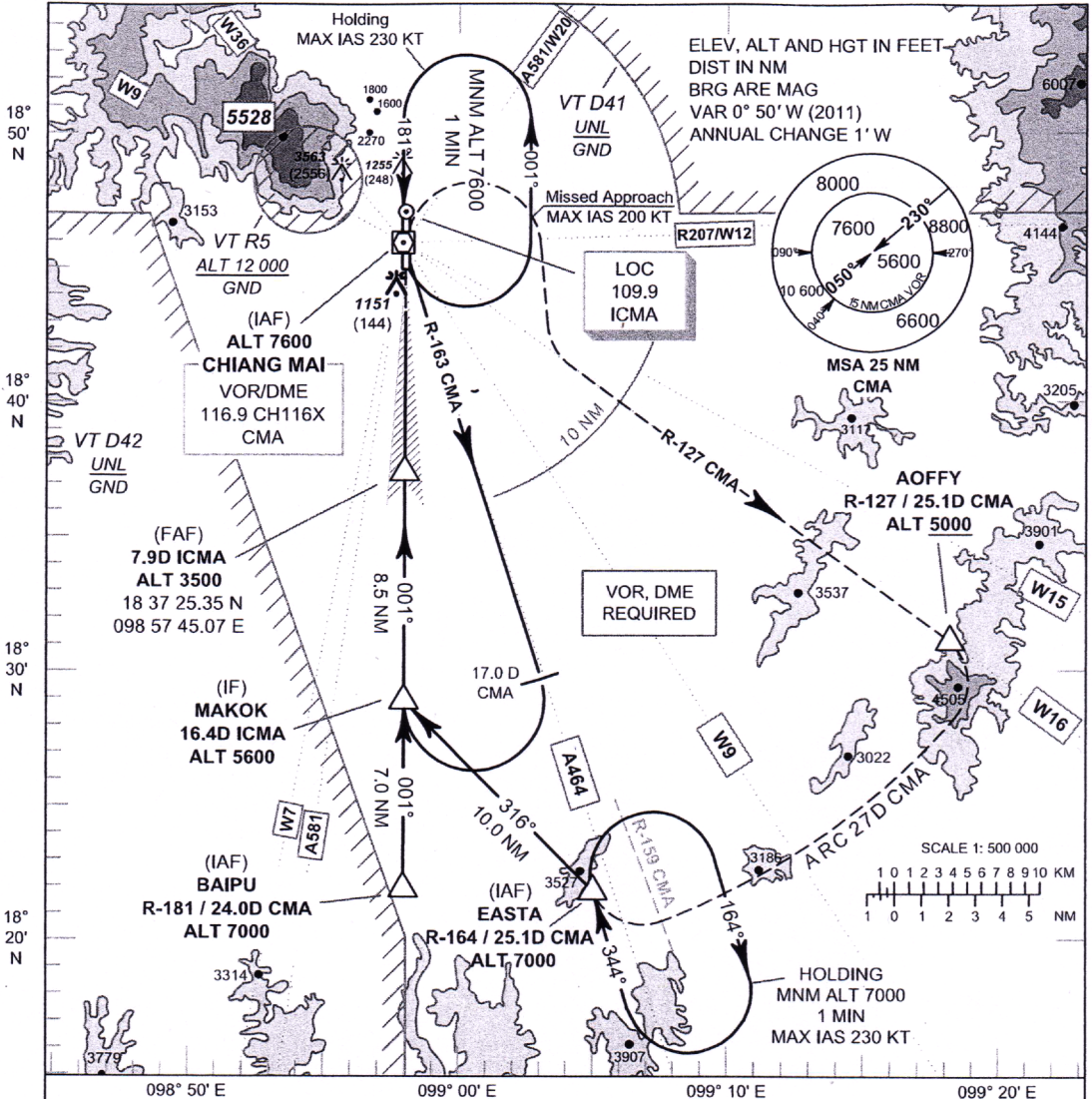


INSTRUMENT APPROACH CHART - ICAO **AERODROME ELEV 1036 FT**
HEIGHTS RELATED TO THR RWY 36 - ELEV 1007 FT

APP : 129.6 , 305.4
 TWR : 118.1 , 236.6
 GND : 121.9 , 275.8
 ATIS : 127.2 , 301.5

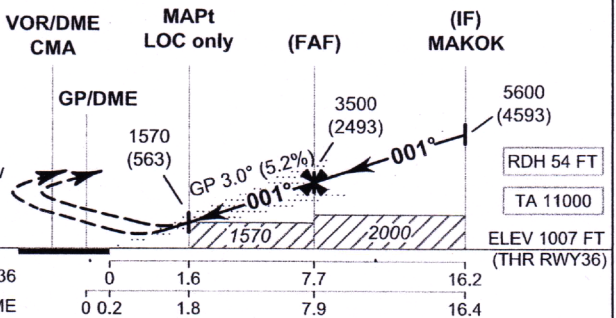
CHIANG MAI / Chiang Mai Intl (VTCC)

ILS or LOC RWY36



MISSED APPROACH :

No turn before MAPt (for LOC only).
Speed restricted to MAX IAS 200 KT until after turn.
 Climb straight ahead to 1700 FT, then turn right to intercept outbound R-127 CMA VOR, proceed on R-127 to AOFFY follow ARC 27D CMA to EASTA at 7000 FT and hold or as directed by ATC.



OCA/H	A	B	C	D	TURNS	Distance (ICMA)								
						1.8D	3D	4D	5D	6D	7D	FAF		
Straight-in Approach	CAT I	1390 (383)	1400 (393)	1410 (403)	1420 (413)	1.6	3.2	4.8	6.4	8.0	9.6	11.2	12.8	14.4
LOC only		1570 (563)												
Circling* (OCH AAL)		2020 (984)		2220 (1184)	2420 (1384)									
* FOR CIRCLING RESTRICTIONS SEE VERSO						Rate of descent	(ft/min)	530	630	740	845	950	1055	

NOTE: OCA (OCH) : 1240 (233) FT of ILS procedure can be achieved for all aircraft categories which can commence a missed approach climb gradient of 4.0% (243 FT/NM) until after turn.