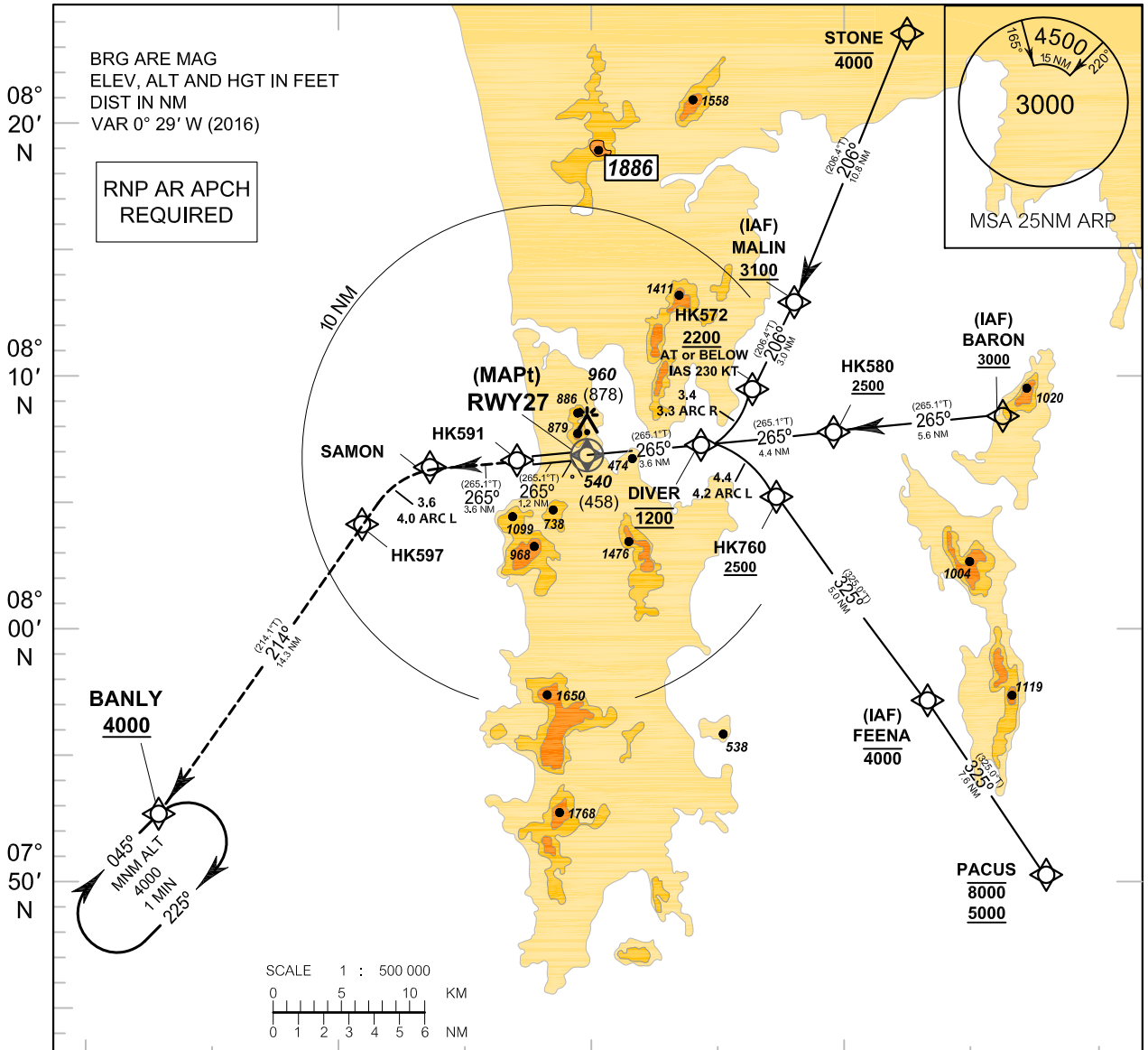


**INSTRUMENT APPROACH CHART - ICAO** **AERODROME ELEV 82 FT**  
**HEIGHTS RELATED TO AERODROME ELEV**

APP : 124.7 , 284.0  
 TWR : 118.1 , 236.6

**PHUKET / Phuket INTL (VTSP)**  
**RNAV (RNP)y RWY 27**



MISSED APPROACH : 98° 10' E

98° 20' E

98° 30' E

Climb to 4000 ft via the RNAV(RNP)  
 Missed Approach track to BANLY  
 or as directed by ATC.

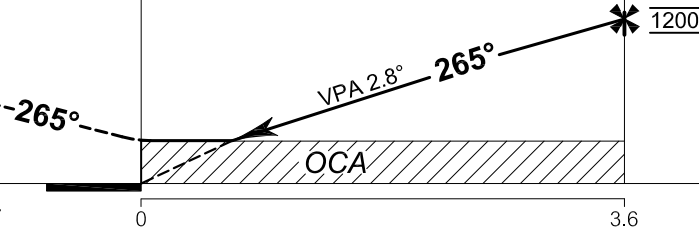
**RWY27**  
**(MAPt)**

**FAF**  
**DIVER**

**NOTES:**

- 1) Approach not authorized when airport temperature below 20°c.
- 2) RF Required.
- 3) VTSP altimeter setting required.
- 4) GNSS Required.
- 5) PAPI and vertical path angle not coincident.
- 6) Procedure requires RNP 0.30 from IAFs to HK591.
- 7) TOGA to Nav required.

**RDH 50 FT**



**TA 11000**

ELEV 82 ft  
 (THR RWY 27)

NM FM THR 27

0

3.6

OCA/H	C	D
RNP 0.30	780 (698)	

REMARK: 1. CIRCLING AND ALTERNATE - N/A  
 2. AREA OUTSIDE IMAGE IS NOT TO SCALE