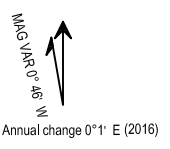
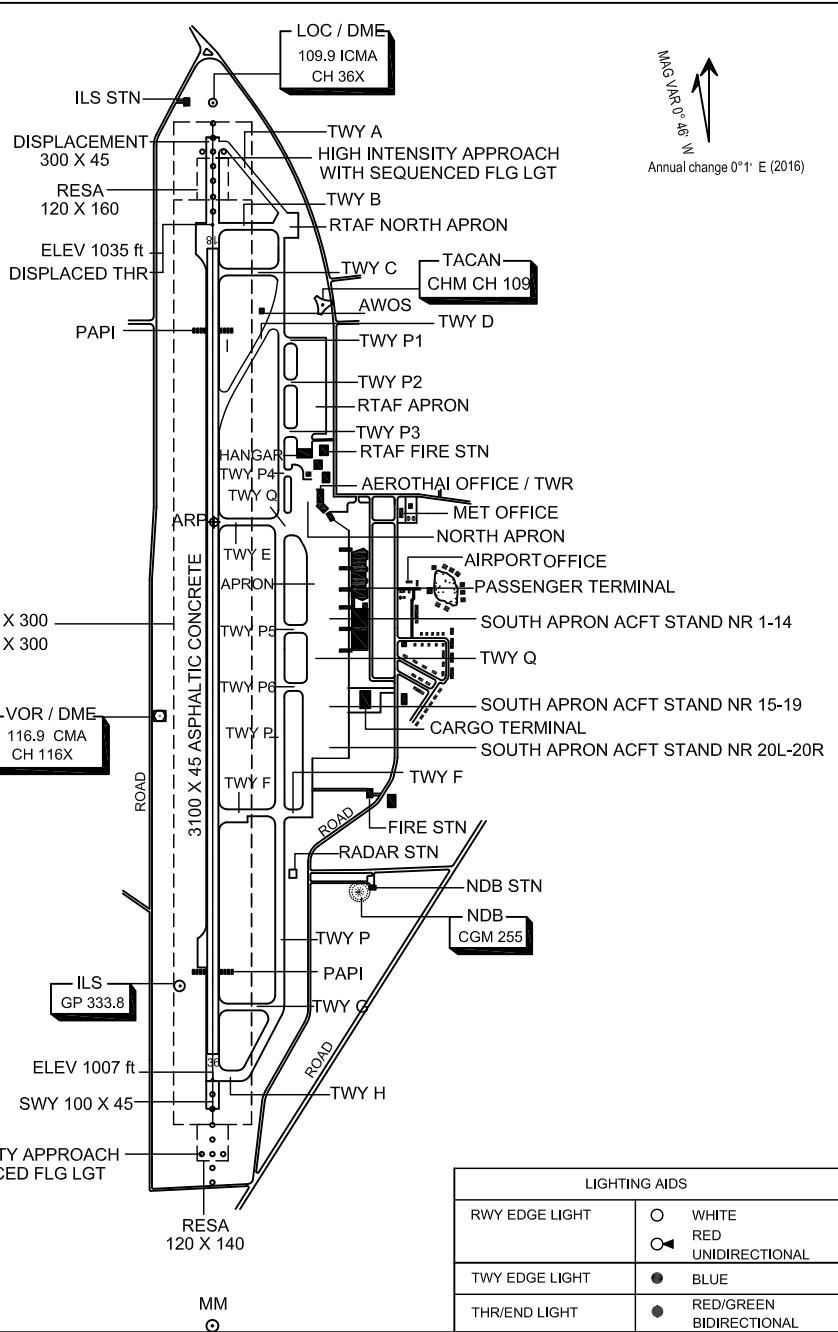
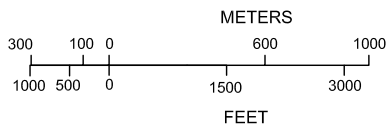


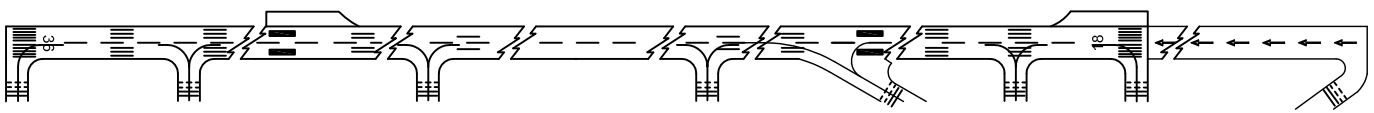
RWY	DIRECTION	THR	BEARING STRENGTH
18	180	18 46 51.81 N 98 57 46.51 E	PCN 59/F/A/X/T
36	360	18 45 10.95 N 98 57 46.26 E	
RWY EXTENSION (DISPLACEMENT AREA 300 m. BEFORE THR 18)			PCN 70/R/B/W/T
TAXIWAY A			PCN 70/R/B/W/T
TAXIWAY F,H,Q,P			PCN 88/R/D/X/T
RAPID EXIT TAXIWAY (TWY D)			PCN 85/F/C/Y/T
TAXIWAY B,C,E,G,P5,P6			PCN 59/F/A/X/T
NORTH APRON			PCN 29/R/D/Y/T
SOUTH APRON ACFT STAND NR 1-14			PCN 78/R/C/X/T
SOUTH APRON ACFT STAND NR 15-19			PCN 62/R/B/X/T
SOUTH APRON ACFT STAND NR 20L-20R			PCN 89/R/B/W/T
RTAF NORTH APRON			672 000 lbs

ELEVATIONS IN FEET AND DIMENSIONS IN METRES
BEARING ARE MAGNETIC

RWY STRIP RWY 18 3620 X 300
RWY STRIP RWY 36 3320 X 300



MARKING AIDS RWY 18/36 AND EXIT TWY



LIGHTING AIDS RWY 18/36 AND EXIT TWY

