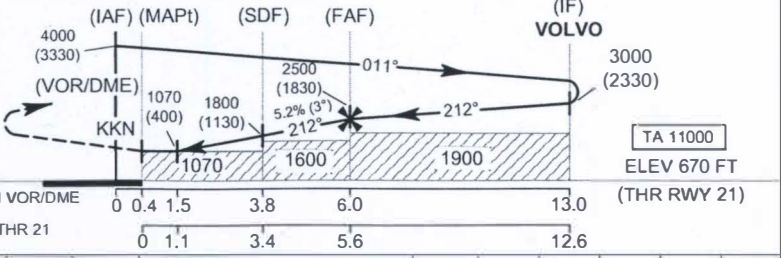


**MISSED APPROACH :**

**No turn before MAPt.**  
Climb straight ahead to 1500 (830) FT then turn left to intercept R-032 KKN VOR then proceed to IF at 3000 (2330) FT and hold or as directed by ATC.



DME FM VOR/DME	0	0.4	1.5	3.8	6.0	13.0
NM FM THR 21	0	1.1	3.4	5.6	12.6	

OCA/H	A	B	C	D	Distance to KKN	1.5 D	2 D	3 D	4 D	5 D	FAF	
Straight-in Approach	1070 (400)				Altitude (Height)	1070 (400)	1225 (555)	1540 (870)	1860 (1190)	2170 (1500)	2500 (1830)	
					Ground speed (GS)	Knot	100	120	140	160	180	200
Circling (OCH AAL)	1600 (930)				Rate of descent	(ft/min)	530	630	740	845	950	1055