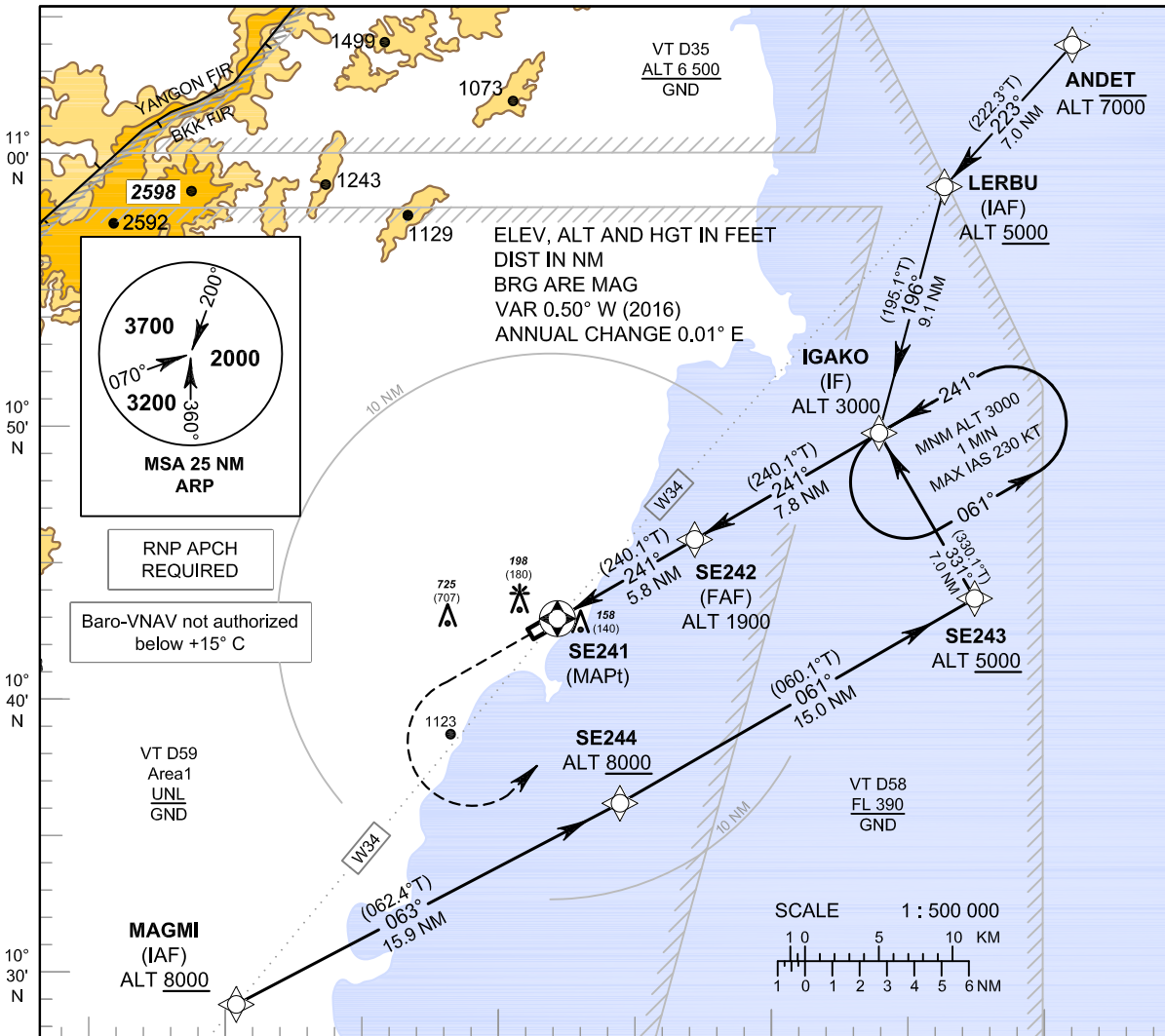


**INSTRUMENT  
APPROACH  
CHART - ICAO**

**AERODROME ELEV 18 FT**  
HEIGHTS RELATED TO  
AERODROME ELEV

APP : 119.75 , 129.6  
: 305.4  
TWR : 122.15 , 236.6

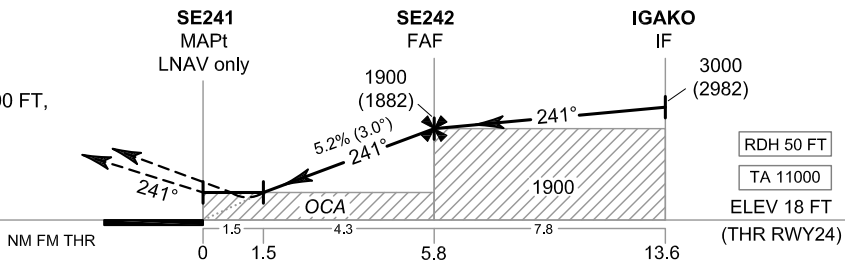
**CHUMPHON / Chumphon (VTSE)**  
**RNAV (GNSS) RWY24**



**MISSED APPROACH :**

**No turn before MAPt.**

Climb on track 241° to 1500 FT,  
then turn left direct to IF  
at 3000 FT and hold or  
as directed by ATC.



OCA/H	A	B	C	D	NM to NEXT WPT	1.5 NM	2 NM	3 NM	4 NM	5 NM	FAF	
LNAV/VNAV	400 (382)				Altitude (Height)	540 (522)	700 (682)	1015 (997)	1330 (1312)	1650 (1632)	1900 (1882)	
LNAV	540 (522)				Ground speed	knot	70	90	100	120	140	160
Circling (OCH AAL)	1500 (1482)				Rate of descent (5.2%)	ft/min	369	474	527	632	737	843