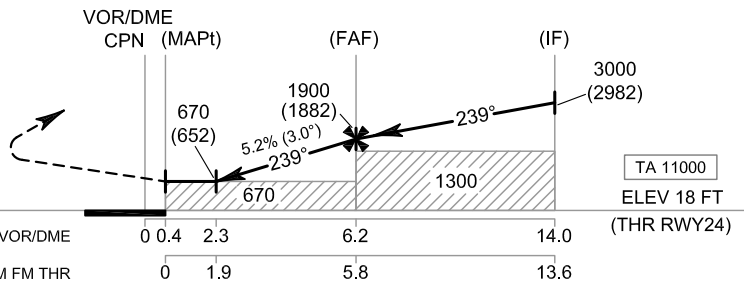


MISSED APPROACH :

No turn before MAPt.

Climb on R-059 to CPN VOR, then climb straight ahead to 1500 FT, and turn left to intercept outbound R-059 CPN VOR, then proceed to IF at 3000 FT and hold or as directed by ATC.



| OCA/H | A | B | C | D | Distance to CPN | 2.3 D | 3 D | 4 D | 5 D | 6 D | FAF | |
|------------------------|-------------|---|---|---|------------------------|-----------|-----------|-------------|-------------|-------------|-------------|-----|
| Straight - in Approach | 670 (652) | | | | Altitude (Height) | 670 (652) | 890 (872) | 1205 (1187) | 1520 (1502) | 1840 (1822) | 1900 (1882) | |
| | | | | | Ground speed | knot | 70 | 90 | 100 | 120 | 140 | 160 |
| Circling (OCH AAL) | 1500 (1482) | | | | Rate of descent (5.2%) | ft/min | 369 | 474 | 527 | 632 | 737 | 843 |