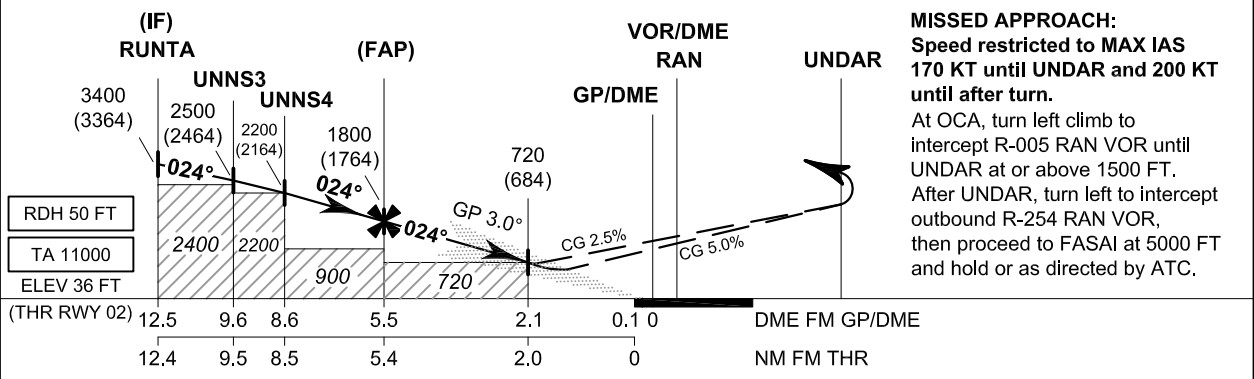
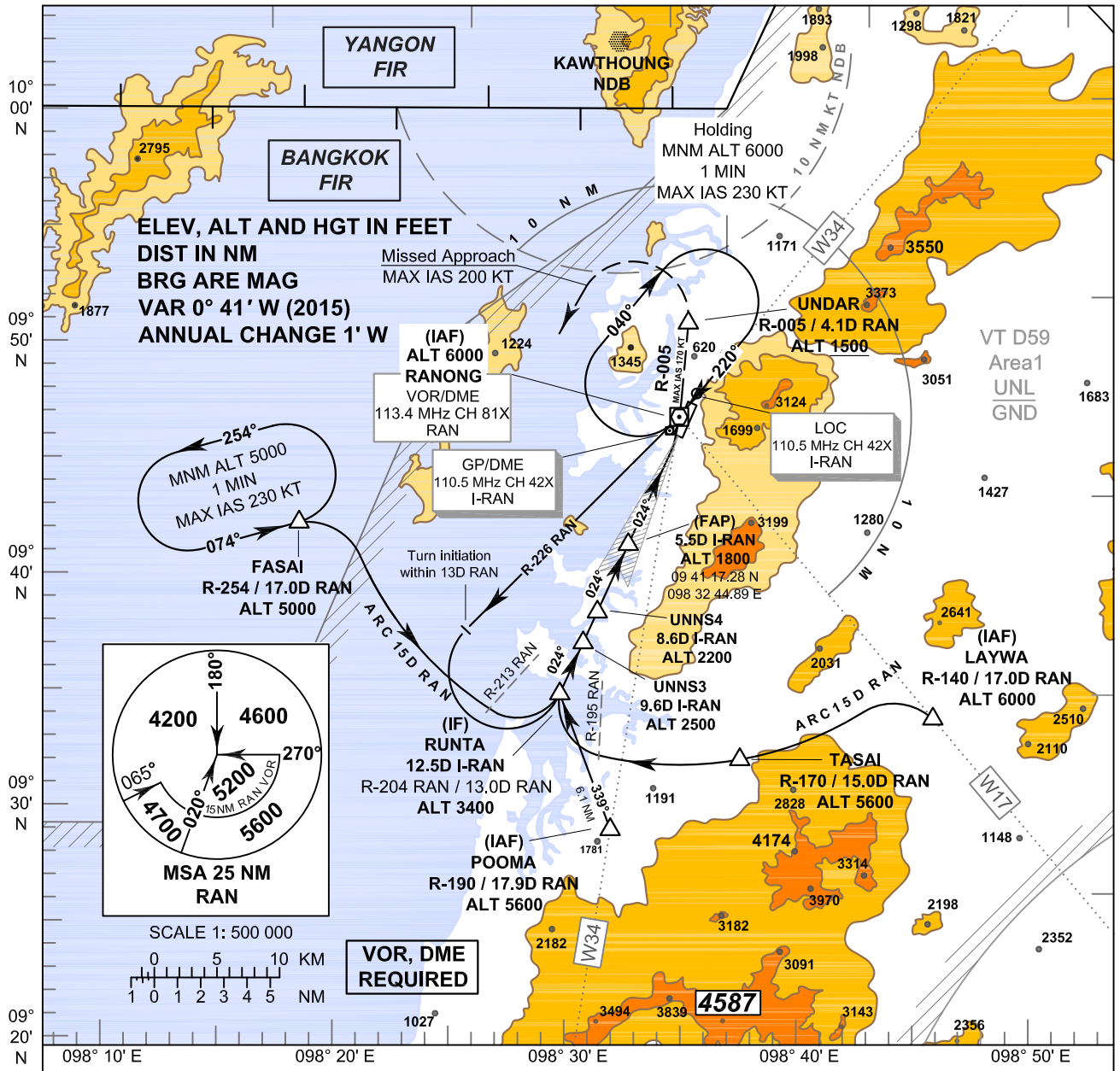


**INSTRUMENT  
APPROACH  
CHART - ICAO**

**AERODROME ELEV 57 FT  
HEIGHTS RELATED TO  
THR RWY 02 - ELEV 36 FT**

APP : 125.1  
TWR : 122.25 , 121.5

**RANONG / Ranong (VTSR)  
ILS RWY02**



RDH 50 FT		TA 11000		ELEV 36 FT		(THR RWY 02)		12.5		9.6		8.6		5.5		2.1		0.1 0		DME FM GP/DME		NM FM THR	
								12.4		9.5		8.5		5.4		2.0		0					
OCA/H		A	B	C	D	Ground speed		knot		70	90	100	120	140	160								
Straight - in Approach		CAT I		720 (684)		Rate of descent (3.0°)		(ft/min)		372	478	531	637	743	849								
Circling (OCH AAL)				Not Authorized																			

**NOTE : OCA (OCH): 510 (474) FT can be achieved for all aircraft categories which can commence a missed approach climb gradient of 5.0%(304 FT/NM) until passing UNDAR.**