

**STANDARD ARRIVAL CHART-
INSTRUMENT (STAR) - ICAO**

TRANSITION ALTITUDE	11000 FT
SPEED RESTRICTION	
MAX IAS 250 KT AT OR BELOW ALT 10000 FT UNLESS OTHERWISE AUTHORIZED BY ATC.	

APP :	119.1, 262.5
	119.4, 262.5
	120.3, 262.5
	121.7, 262.5
	122.35, 262.5
	124.35, 262.5
	125.2, 262.5
DAR :	125.5, 262.5
TWR :	118.1, 236.6
ATIS :	126.4, 344.6

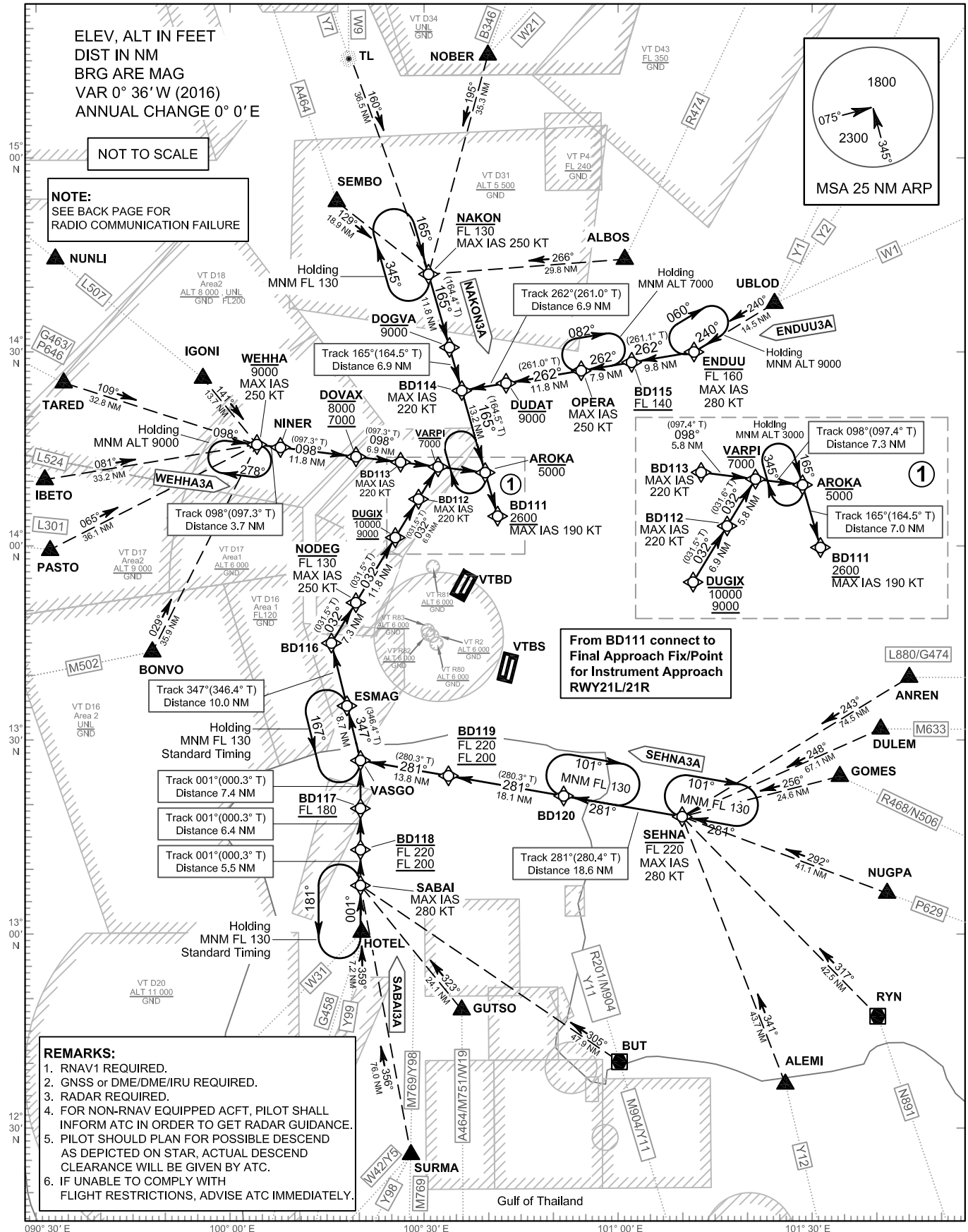
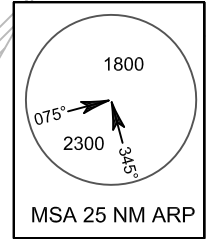
**BANGKOK/Don Mueang Intl (VTBD)
RNAV RWY21L/21R**

ENDUU3A NAKON3A
SABAI3A SEHNA3A WEHHA3A

ELEV, ALT IN FEET
DIST IN NM
BRG ARE MAG
VAR 0° 36' W (2016)
ANNUAL CHANGE 0° 0' E

NOT TO SCALE

NOTE:
SEE BACK PAGE FOR
RADIO COMMUNICATION FAILURE



CHANGE: L880 M633 N506 AND P629 ADDED. ANREN DULEM AND NUGPA
TRANSITION WAYPOINT ADDED. CANCEL BATAK TRANSITION WAYPOINT.

- REMARKS:**
1. RNAV1 REQUIRED.
 2. GNSS or DME/DME/IRU REQUIRED.
 3. RADAR REQUIRED.
 4. FOR NON-RNAV EQUIPPED ACFT, PILOT SHALL INFORM ATC IN ORDER TO GET RADAR GUIDANCE.
 5. PILOT SHOULD PLAN FOR POSSIBLE DESCEND AS DEPICTED ON STAR, ACTUAL DESCEND CLEARANCE WILL BE GIVEN BY ATC.
 6. IF UNABLE TO COMPLY WITH FLIGHT RESTRICTIONS, ADVISE ATC IMMEDIATELY.