

**STANDARD DEPARTURE CHART-
INSTRUMENT (SID) - ICAO**

TRANSITION ALTITUDE 11000 FT
SPEED RESTRICTION MAX IAS 250 KT AT OR BELOW ALT 10000 FT UNLESS OTHERWISE AUTHORIZED BY ATC.

APP :	119.1, 262.5
	119.4, 262.5
	120.3, 262.5
	121.7, 262.5
	122.35, 262.5
	124.35, 262.5
	125.2, 262.5
DAR :	125.5, 262.5
TWR :	118.1, 236.6
ATIS :	126.4, 344.6

**BANGKOK/Don Mueang Intl (VTBD)
RNAV RWY21R**

DOSBU3A GORSI3A HHN3A
KASNI3A KIGOB3A REGOS3A
RYN3A SABIS3A UKERA3A

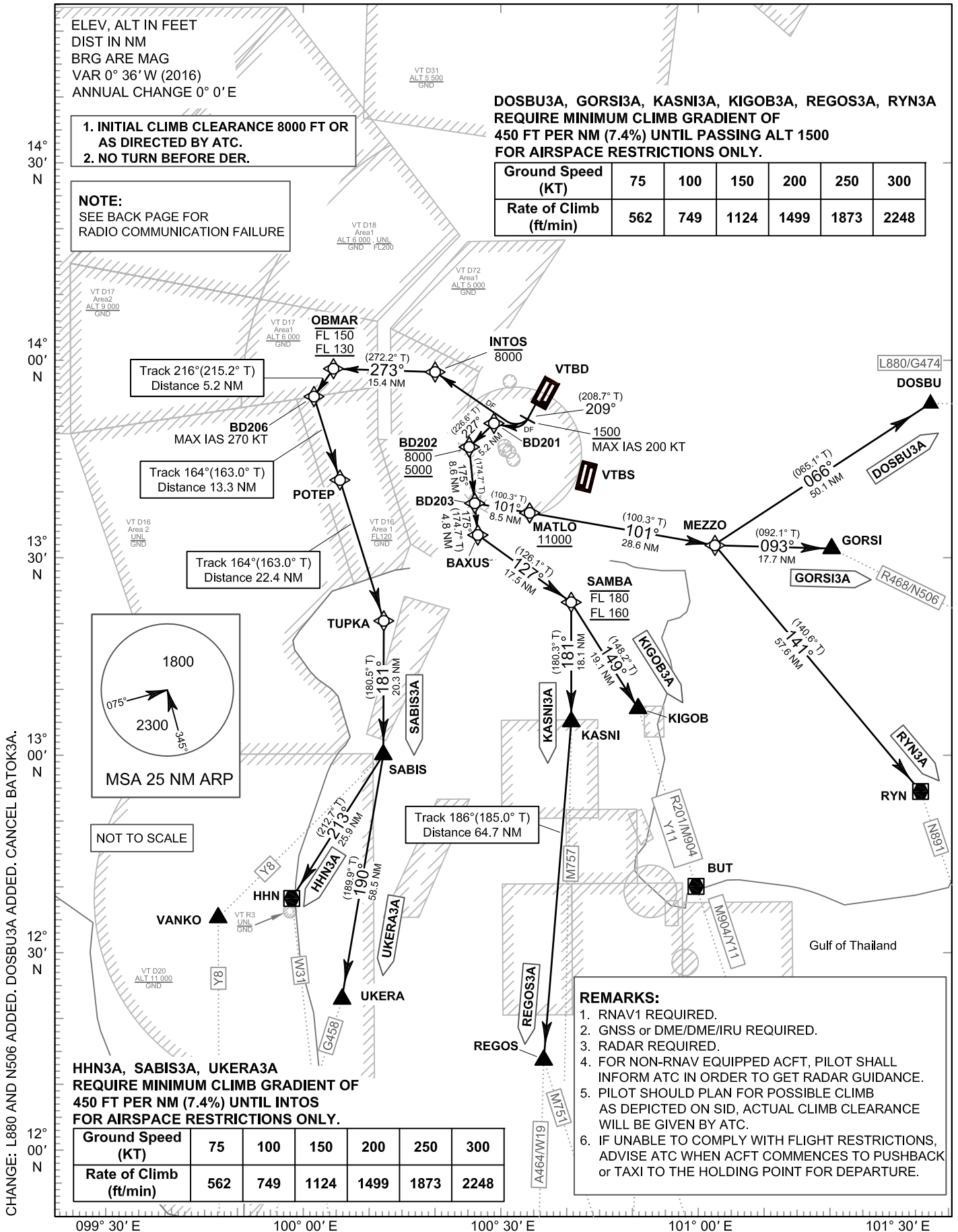
ELEV, ALT IN FEET
DIST IN NM
BRG ARE MAG
VAR 0° 36' W (2016)
ANNUAL CHANGE 0° 0' E

1. INITIAL CLIMB CLEARANCE 8000 FT OR AS DIRECTED BY ATC.
2. NO TURN BEFORE DER.

NOTE:
SEE BACK PAGE FOR
RADIO COMMUNICATION FAILURE

DOSBU3A, GORSI3A, KASNI3A, KIGOB3A, REGOS3A, RYN3A
REQUIRE MINIMUM CLIMB GRADIENT OF
450 FT PER NM (7.4%) UNTIL PASSING ALT 1500
FOR AIRSPACE RESTRICTIONS ONLY.

Ground Speed (KT)	75	100	150	200	250	300
Rate of Climb (ft/min)	562	749	1124	1499	1873	2248



CHANGE: L880 AND N506 ADDED. DOSBU3A ADDED. CANCEL BATOMK3A.

HHN3A, SABIS3A, UKERA3A
REQUIRE MINIMUM CLIMB GRADIENT OF
450 FT PER NM (7.4%) UNTIL INTOS
FOR AIRSPACE RESTRICTIONS ONLY.

Ground Speed (KT)	75	100	150	200	250	300
Rate of Climb (ft/min)	562	749	1124	1499	1873	2248

REMARKS:

1. RNAV1 REQUIRED.
2. GNSS or DME/DME/IRU REQUIRED.
3. RADAR REQUIRED.
4. FOR NON-RNAV EQUIPPED ACFT, PILOT SHALL INFORM ATC IN ORDER TO GET RADAR GUIDANCE.
5. PILOT SHOULD PLAN FOR POSSIBLE CLIMB AS DEPICTED ON SID, ACTUAL CLIMB CLEARANCE WILL BE GIVEN BY ATC.
6. IF UNABLE TO COMPLY WITH FLIGHT RESTRICTIONS, ADVISE ATC WHEN ACFT COMMENCES TO PUSHBACK or TAXI TO THE HOLDING POINT FOR DEPARTURE.