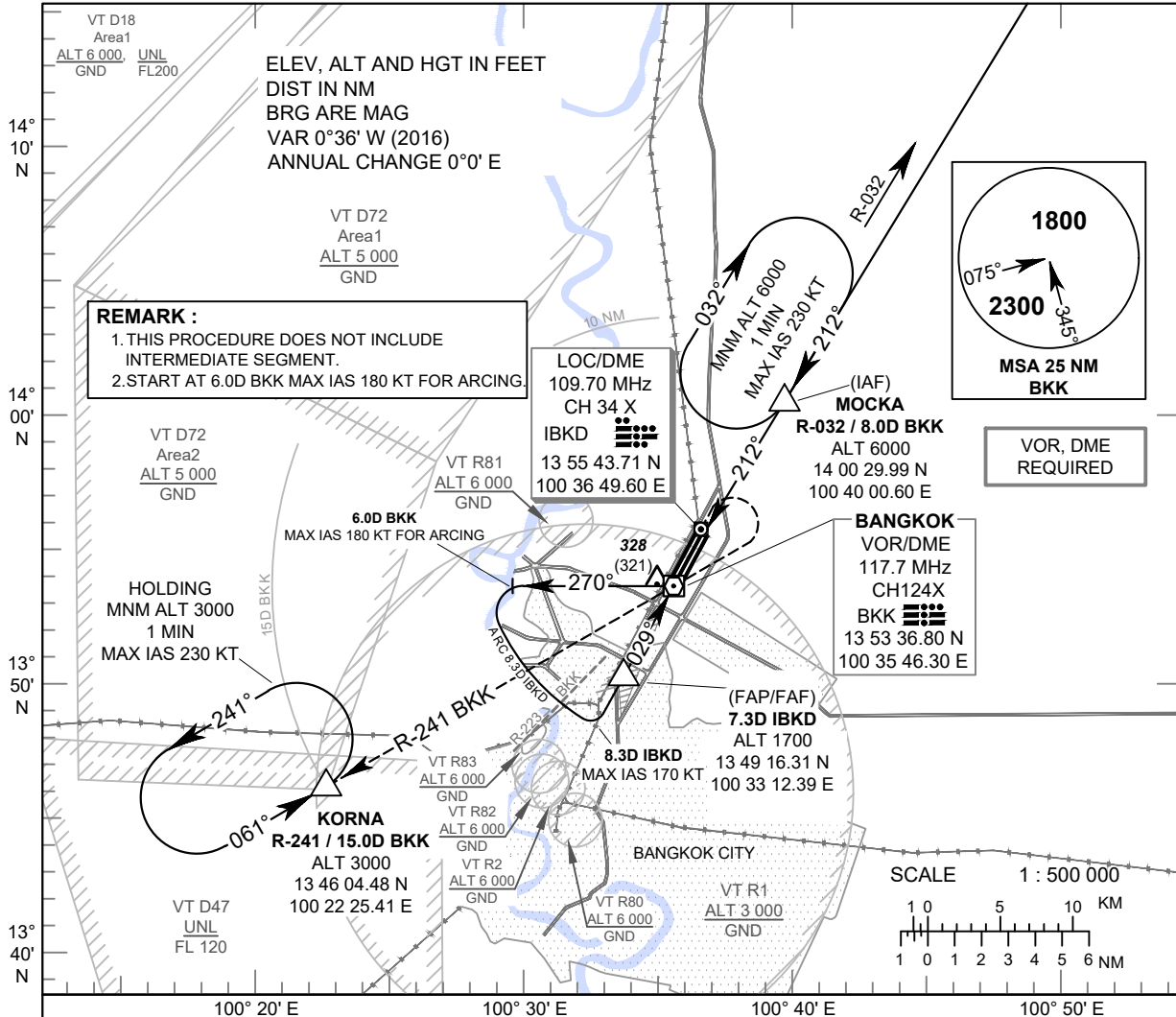


INSTRUMENT APPROACH CHART - ICAO **AERODROME ELEV 9 FT**
HEIGHTS RELATED TO
THR RWY03L - ELEV 7 FT

APP	: 119.1, 262.5
	: 119.4, 262.5
	: 120.3, 262.5
	: 121.7, 262.5
	: 122.35, 262.5
	: 124.35, 262.5
	: 125.2, 262.5
DAR	: 125.5, 262.5
TWR	: 118.1, 236.6
ATIS	: 126.4, 344.6

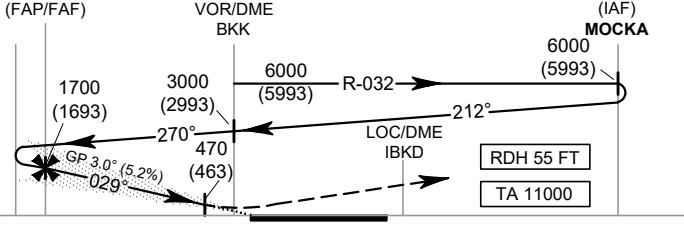
BANGKOK / Don Mueang Intl (VTBD)
ILS or LOC RWY03L



MISSED APPROACH :

No turn before MAPt (for LOC only).
 Climb on track 029° direct to the LOC/DME then climb outbound on R-029 BKK VOR to 1500 FT then turn right to VOR/DME BKK and continue climb on R-241 BKK VOR to 15 DME BKK VOR FIX at 3000 FT and hold or as directed by ATC.

ELEV 7 FT
 (THR RWY03L)



CHANGE: FINAL TRACK, MISSED APPROACH TRACK.

DME FM VOR/DME	6.0	5.0	1.1	0	8.0
DME FM LOC/DME	7.3	3.4	2.1	0	
NM FM THR 03L	5.2	1.3	0		

OCA/H		A	B	C	D	Distance (IBKD)	7 DME	6 DME	5 DME	4 DME	3.4 DME		
Straight - in Approach	CAT I	220 (213)				Altitude (Height)	1605 (1598)	1290 (1283)	975 (968)	660 (653)	470 (463)		
		470 (463)				Ground speed	100	120	140	160	180	200	
LOC only		470 (463)				FAF-MAPt 3.9 NM	(min:s)	2:20	1:57	1:40	1:28	1:18	1:10
Circling (OCH AAL)		700 (691)	800 (791)	1100 (1091)		Rate of descent	(ft/min)	530	637	743	849	955	1061