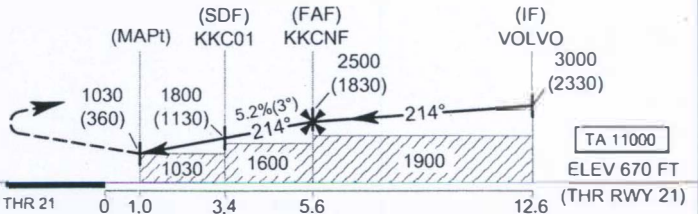


MISSED APPROACH :

No turn before MAPt.

Climb on track 214° to 1500 (830) FT
then turn left direct to IF at 3000 (2330) FT
and hold or as directed by ATC.



OCA/H	A	B	C	D	NM to THR 21	1 NM	2 NM	3 NM	4 NM	5 NM	FAF	
LNAV	1030 (360)				Altitude (Height)	1030 (360)	1350 (680)	1670 (1000)	1980 (1310)	2300 (1630)	2500 (1830)	
					Ground speed (GS)	Knot	100	120	140	160	180	200
Circling (OCH AAL)	1600 (930)				Rate of descent	(ft/min)	530	630	740	845	950	1055

CHANGE : ADDED GND FREQUENCIES. ADDED ATIS FREQUENCIES.