

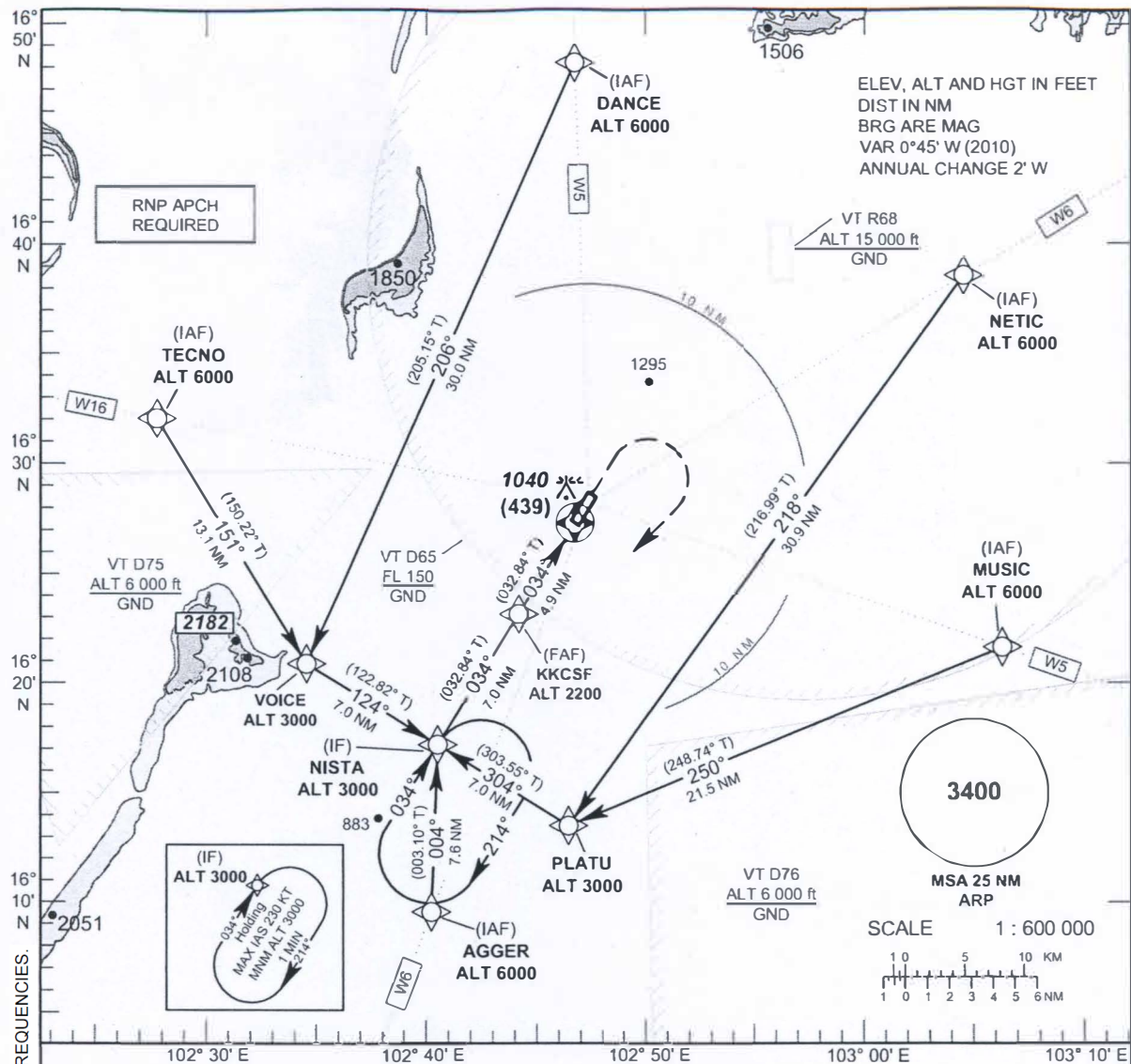
**INSTRUMENT APPROACH CHART - ICAO**

**AERODROME ELEV 670 FT HEIGHTS RELATED TO THR RWY 03 - ELEV 601 FT**

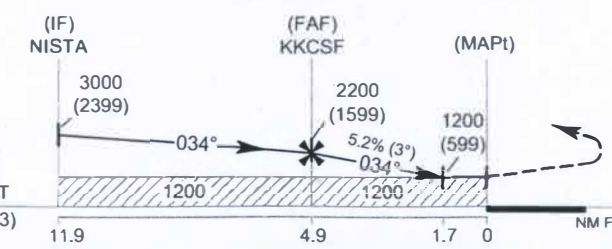
APP : 123.4, 240.0  
TWR : 122.25, 236.6  
GND : 121.9  
ATIS : 126.85

**KHON KAEN / Khon Kaen (VTUK)**

**RNAV (GNSS) RWY 03**



CHANGE : ADDED GND FREQUENCIES. ADDED ATIS FREQUENCIES.



**MISSED APPROACH :**

**No turn before MAPt.**  
Climb on track 034° to 1500 (899) FT then turn right direct to IF at 3000 (2399) FT and hold as directed by ATC.

OCA/H	A	B	C	D	NM to THR 03	FAF	4 NM	3 NM	2 NM	1.7 NM
LNAV	1200 (599)				Altitude (Height)	2200 (1599)	1915 (1314)	1600 (999)	1280 (679)	1200 (599)
					Ground speed (GS)	Knot	100	120	140	160
Circling (OCH AAL)	1600 (930)				Rate of descent	(ft/min)	530	630	740	845
							950	1055		