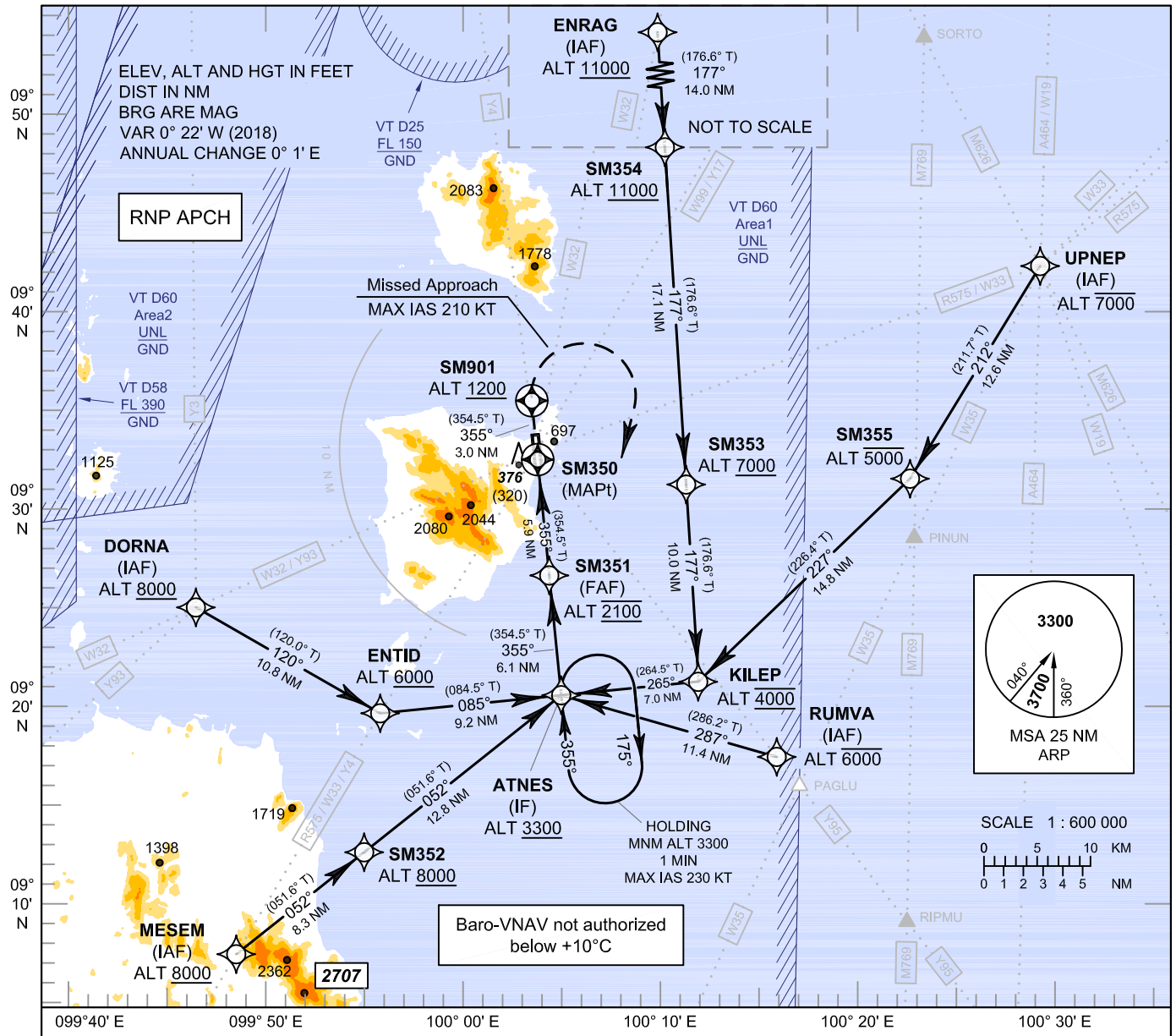


INSTRUMENT APPROACH CHART - ICAO

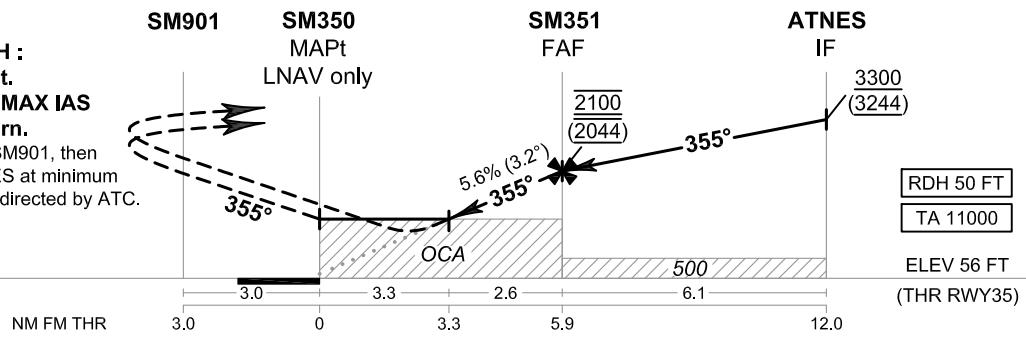
AERODROME ELEV 64 FT
 HEIGHTS RELATED TO THR RWY35 - ELEV 56 FT

APP : 129.6
 TWR : 118.9
 GND : 121.9
 ATIS : 128.6

SURAT THANI / Samui (VTSM)
RNAV (GNSS) RWY35
CAT A, B



MISSED APPROACH :
No turn before MAPt.
Speed restricted to MAX IAS 210 KT until after turn.
 Climb on track 355° to SM901, then turn right direct to ATNES at minimum 3300 FT and hold or as directed by ATC.



OCA/H	A	B	NM to NEXT WPT	3.3 NM	4 NM	5 NM	FAF
LNAV/VNAV	1120 (1064)		Altitude (Height)	1220 (1164)	1470 (1414)	1810 (1754)	2100 (2044)
LNAV	1220 (1164)		Ground Speed	knot 70	90	100	120 140 160
Circling* (OCH AAL)	1400 (1336)		Rate of Descent FAF - MAPt 5.6%	ft/min 397	510	567	681 794 907

CHANGE: NEW PROCEDURES.