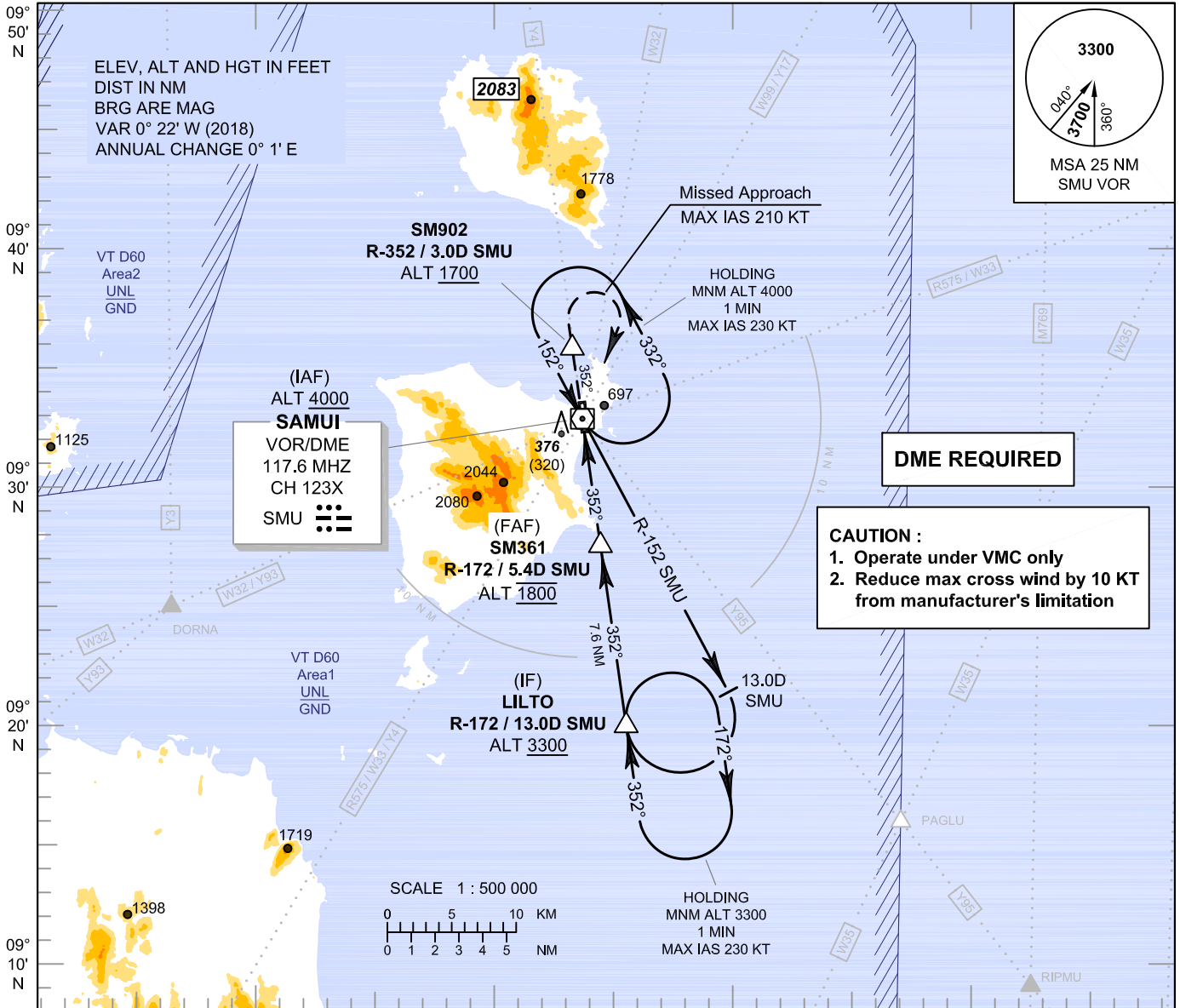


**INSTRUMENT
APPROACH
CHART - ICAO**

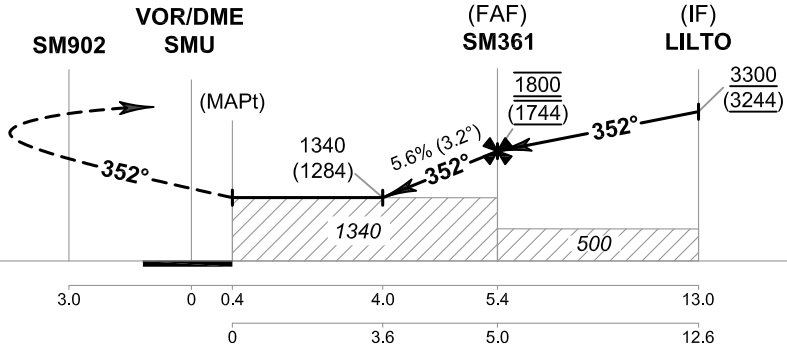
AERODROME ELEV 64 FT
HEIGHTS RELATED TO
THR RWY35 - ELEV 56 FT

APP : 129.6
TWR : 118.9
GND : 121.9
ATIS : 128.6

SURAT THANI / Samui (VTSM)
VOR RWY35
CAT C



MISSED APPROACH :
No turn before MAPt.
Speed restricted to MAX IAS 210 KT until after turn.
Climb on track 352° to SM902, then turn right to SMU VOR at minimum 4000 FT and hold or as directed by ATC.



OCA/H	C	Distance (SMU)	4 D	5 D	FAF
Straight - in Approach	1340 (1284)	Altitude (Height)	1340 (1284)	1670 (1614)	1800 (1744)
Circling* (OCH AAL)	1400 (1336)	Ground Speed	knot 70 90 100 120 140 160		
		Rate of Descent 5.6%	ft/min 397 510 567 681 794 907		

* FOR CIRCLING RESTRICTIONS SEE VERSO.

CHANGE: NEW PROCEDURES.