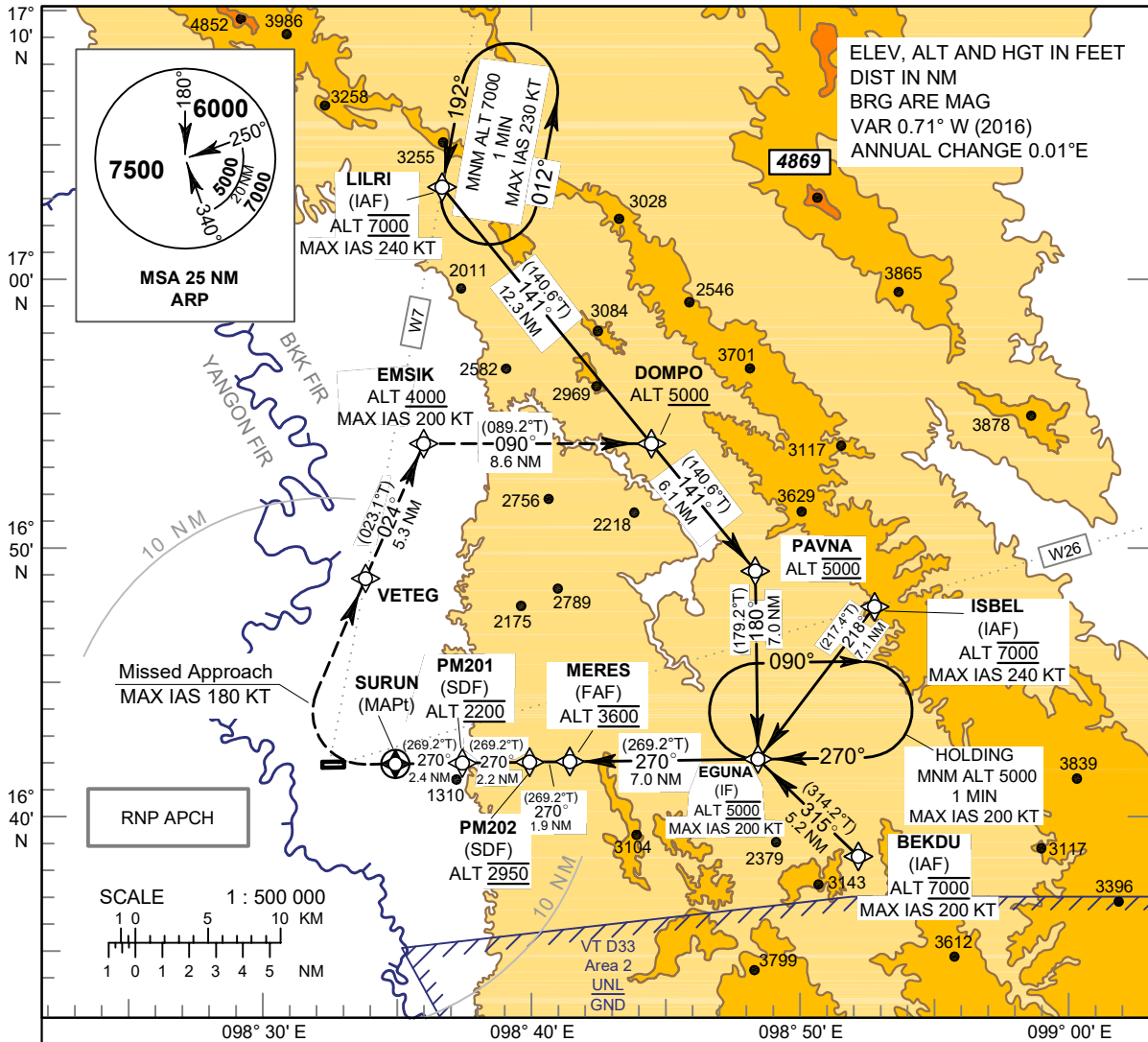


INSTRUMENT APPROACH CHART - ICAO

AERODROME ELEV 690 FT
 HEIGHTS RELATED TO THR RWY27 - ELEV 676 FT

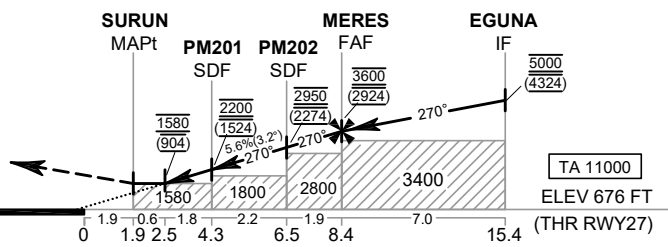
APP : 120.65 MHz
 TWR : 118.35 , 236.6 MHz
 ATIS : 316.0 KHz

TAK / Mae Sot (VTPM)
RNAV (GNSS) RWY27



CAUTION : 1. Descent gradient not coincident with PAPI
 2. Missed approach procedure shall be within BKK FIR only

MISSED APPROACH :
No turn before MAPt.
Speed restricted to MAX IAS 180 KT until after turn.
 At MAPt, turn right climb to VETEG, then to EMSIK, then turn right to DOMPO, then turn right to PAVNA, then proceed to EGUNA at 5000 FT and hold or as directed by ATC.



CHANGE NEW PROCEDURES.

OCA/H	A	B	C	NM to NEXT WPT	2.5 NM	3 NM	PM201	5 NM	PM202	7 NM	8 NM	FAF	
LNAV	1580 (904)			Altitude (Height)	1580 (904)	1745 (1069)	2200 (1524)	2425 (1749)	2950 (2274)	3105 (2429)	3450 (2774)	3600 (2924)	
Circling (OCH AAL)	NOT AUTHORIZED			Ground speed	knot			70	90	100	120	140	160
				Rate of descent FAF - MAPt	5.6%			397	510	567	681	794	907