

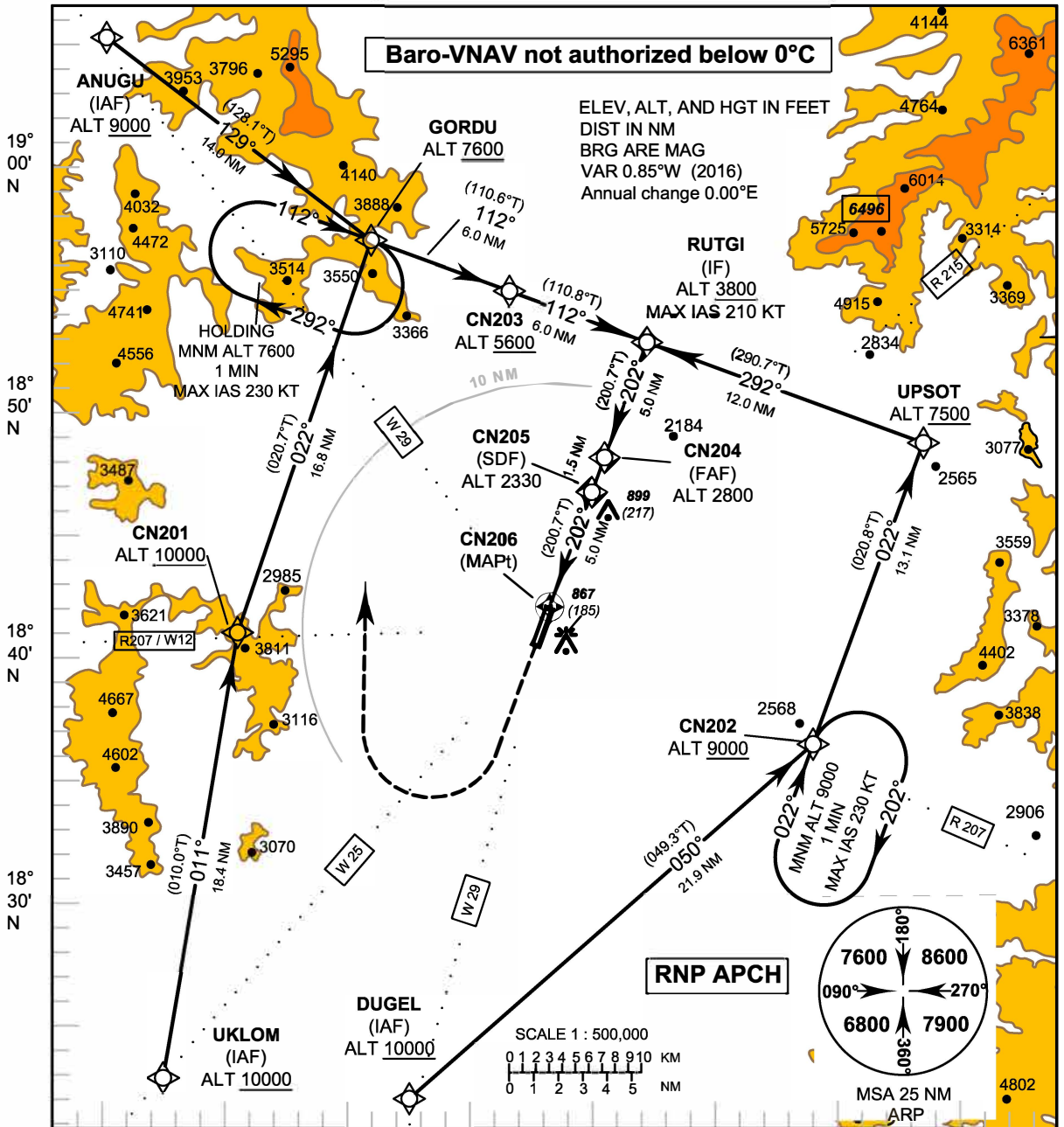
INSTRUMENT AERODROME ELEV 685 FT
APPROACH HEIGHTS RELATED TO
CHART-ICAO THR RWY20 - ELEV 682 FT

APP : 120.25
 TWR : 118.55, 236.6

NAN/Nan Nakhon (VTCN)
RNAV (GNSS) RWY20

Baro-VNAV not authorized below 0°C

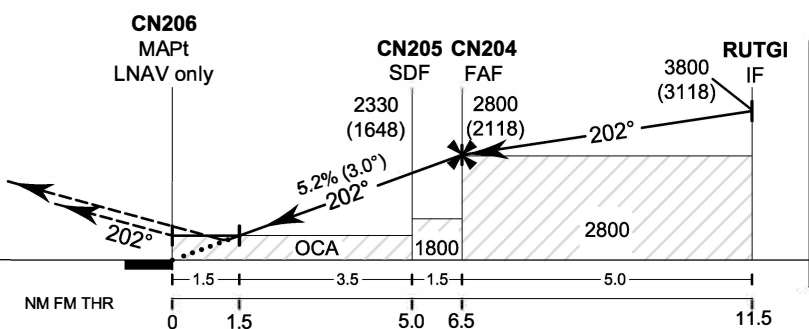
ELEV, ALT, AND HGT IN FEET
 DIST IN NM
 BRG ARE MAG
 VAR 0.85°W (2016)
 Annual change 0.00°E



100° 30' E 100° 40' E 100° 50' E 101° 00' E

TA 11 000 **RDH 50 FT**

Missed Approach :
No turn before MAPt.
 Climb on track 202° to 3300 FT,
 then turn right direct to **GORDU**
 at 7600 FT and hold or as
 directed by ATC.



ELEV 682 FT
 (THR RWY20)

OCA/H	A	B	C	D	NM to NEXT WPT	1.5 NM	2 NM	3 NM	4 NM	5 NM	6 NM	FAF	
LNNAV/VNAV	1030 (348)				Altitude (Height)	1200 (518)	1365 (683)	1680 (998)	1995 (1313)	2310 (1628)	2630 (1948)	2800 (2118)	
LNNAV	1200 (518)				Ground Speed	knot		70	90	100	120	140	160
Circling (OCH AAL)	1500 (815)		2100 (1415)		Rate of descent FAF-MAPt (5.2%)	(ft/min)		369	474	527	632	737	843