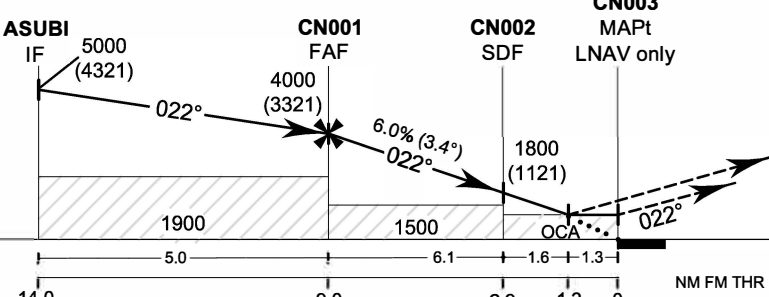


100° 30' E 100° 40' E 100° 50' E 101° 00' E

RDH 50 FT

TA 11 000



Missed Approach :
No turn before MAPt.
Speed restricted to
MAX IAS 210 KT until after turn.
 Climb on track 022° to 1600 FT, then
 turn right direct to **ASUBI** at 5000 FT
 and hold or as directed by ATC.

ELEV 679 FT
 (THR RWY02)

OCA/H	A	B	C	D	NM to NEXT WPT	FAF	8 NM	7 NM	6 NM	5 NM	4 NM	3 NM	2 NM	1.3 NM
LNAV/VNAV	1200 (521)				Altitude (Height)	4000 (3321)	3645 (2966)	3280 (2601)	2915 (2236)	2550 (1871)	2190 (1511)	1825 (1146)	1460 (781)	1200 (521)
LNAV	1200 (521)				Ground Speed	knot		70	90	100	120	140	160	
Circling (OCH AAL)	1500 (815)		2100 (1415)		Rate of descent FAF-MAPt (6.0%)	(ft/min)		425	547	608	729	851	972	