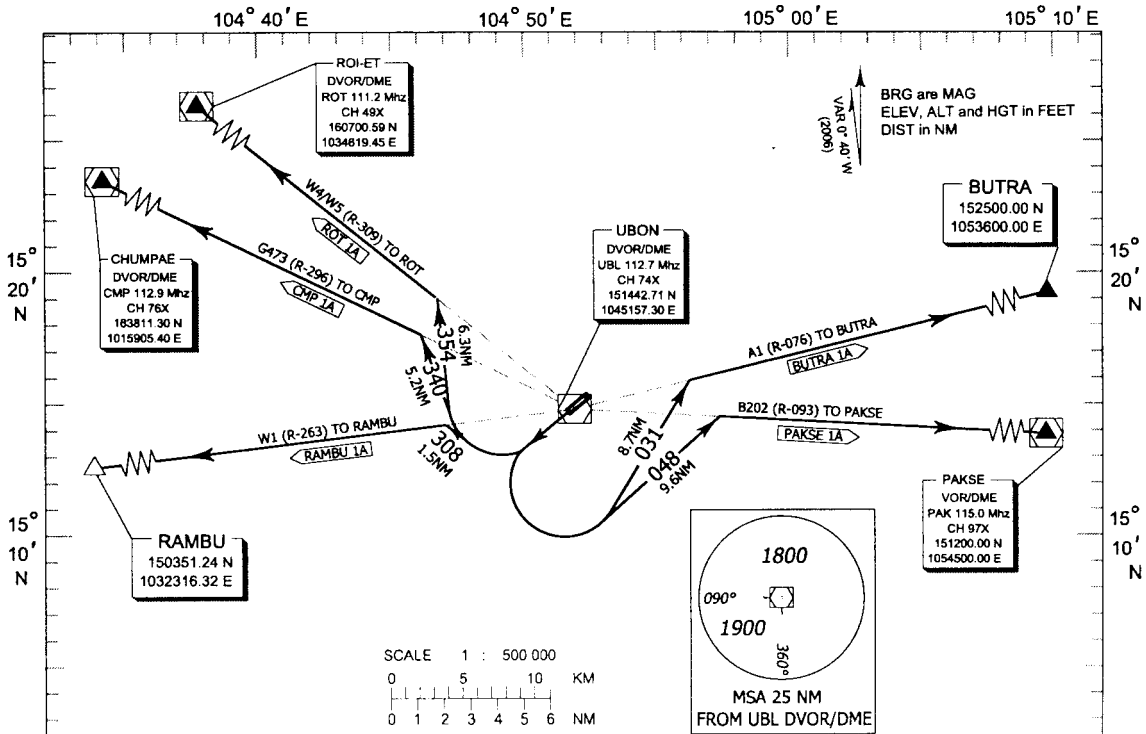


STANDARD INSTRUMENT DEPARTURE CHART  
(SID) - ICAO

UBON RATCHATANI / Ubon (VTUU)  
**RWY 23**

APP : 123.5 , 257.8  
TWR : 119.9 , 274.5

RAMBU 1A, ROT 1A  
CMP 1A, BUTRA 1A  
PAKSE 1A



**COMMUNICATION FAILURE PROCEDURE**  
- Squawk A7600  
- Comply with last assigned level until next reporting point then climb to flight plan cruising level.

**Warning**  
- No turn before Departure End of Runway  
- Procedure Design Gradient = 4.9 % to 1200ft  
- Max IAS 230 kts for turning after departure

**RAMBU ONE ALPHA :** AFTER DEPARTURE CLIMB ON RWY HEADING UNTIL 1200FT OR ABOVE THEN TURN RIGHT HEADING 308 TO INTERCEPT AND PROCEED ON R-263 UBL TO RAMBU  
(RAMBU 1A)

**CHUMPAE ONE ALPHA :** AFTER DEPARTURE CLIMB ON RWY HEADING UNTIL 1200FT OR ABOVE THEN TURN RIGHT HEADING 340 TO INTERCEPT AND PROCEED ON R-296 UBL TO CHUMPAE DVOR/DME  
(CMP 1A)

**ROIET ONE ALPHA :** AFTER DEPARTURE CLIMB ON RWY HEADING UNTIL 1200FT OR ABOVE THEN TURN RIGHT HEADING 354 TO INTERCEPT AND PROCEED ON R-309 UBL TO ROIET DVOR/DME  
(ROT 1A)

**BUTRA ONE ALPHA :** AFTER DEPARTURE CLIMB ON RWY HEADING UNTIL 1200FT OR ABOVE THEN TURN LEFT HEADING 031 TO INTERCEPT AND PROCEED ON R-076 UBL TO BUTRA  
(BUTRA 1A)

**PAKSE ONE ALPHA :** AFTER DEPARTURE CLIMB ON RWY HEADING UNTIL 1200FT OR ABOVE THEN TURN LEFT HEADING 048 TO INTERCEPT AND PROCEED ON R-093 TO PAKSE VOR/DME  
(PAKSE 1A)