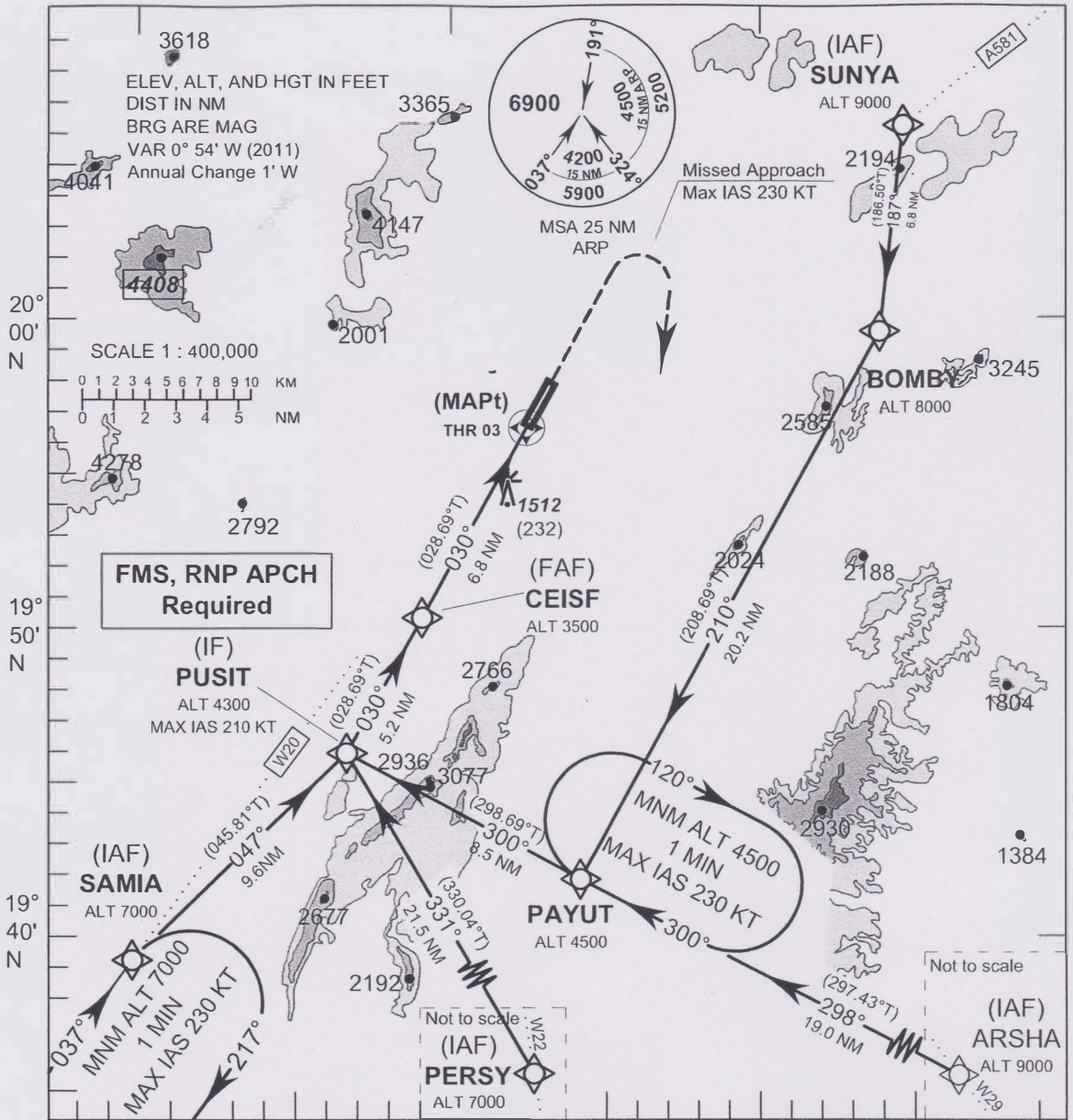


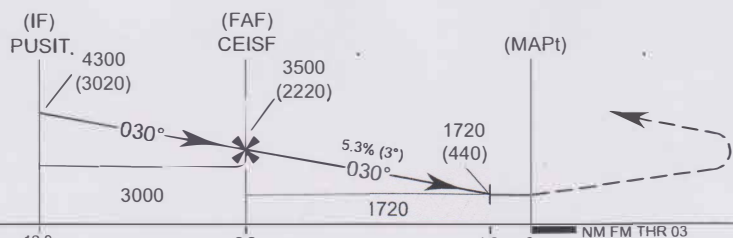
**INSTRUMENT APPROACH CHART-ICAO** **AERODROME ELEV 1280 FT**  
 HEIGHTS RELATED TO AERODROME ELEV

APP : 120.05, 257.80  
 TWR : 118.40, 236.60

**CHIANG RAI/ MAE FAH LUANG-Chiang Rai Intl (VTCT) RNAV (GNSS) RWY03**



**Missed Approach :**  
**No Turn Before MAPt. Speed restricted to MAX IAS 230 KT unit after turn.**  
 Climb on track 030° to 2600 FT, then turn right direct to **PAYUT** at 4500 FT and hold or as directed by ATC.



ELEV 1280 FT  
 (THR RWY 03)

OCA/H	A	B	C	D	Distance(THR 03)	FAF	6 NM	5 NM	4 NM	3 NM	2 NM	1.2 NM
LNAV	1720 (440)				Altitude (Height)	3500 (2220)	3260 (1980)	2940 (1660)	2620 (1340)	2295 (1015)	1975 (695)	1720 (440)
					Ground Speed (GS)	knot	70	90	100	120	140	160
Circling	1850 (570)		2470 (1190)		Rate of descent (5.3%)	(ft/min)	376	483	537	644	751	859