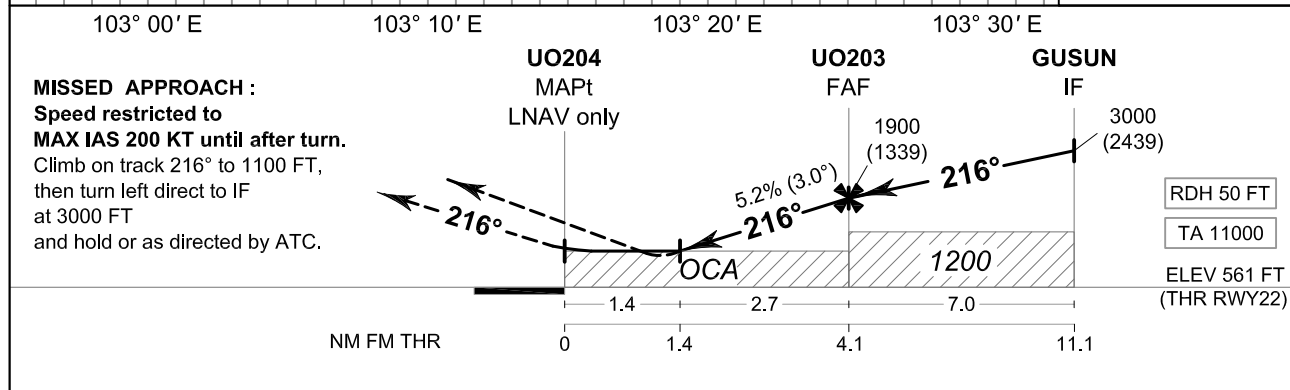
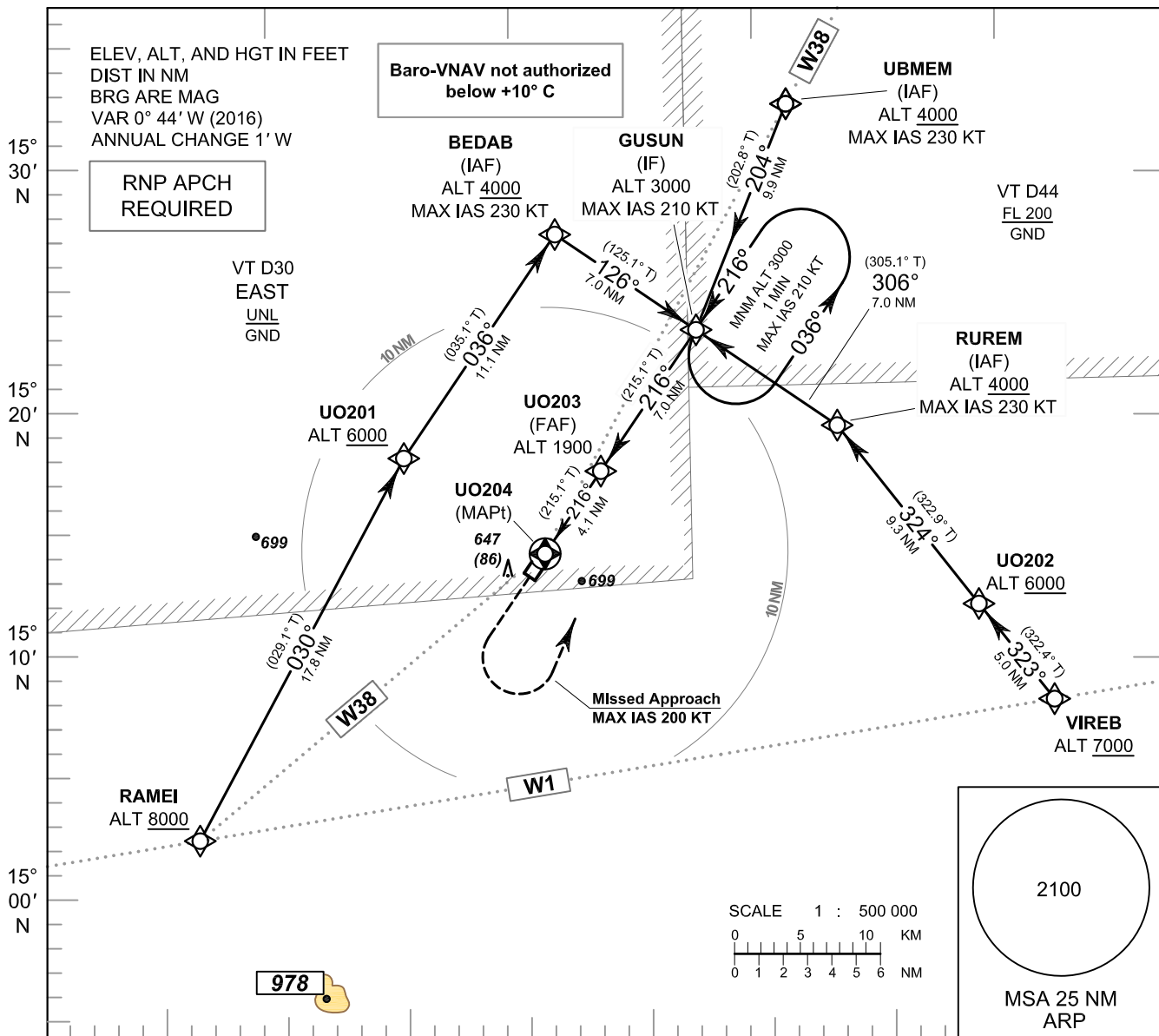


INSTRUMENT AERODROME ELEV 590 FT
APPROACH HEIGHTS RELATED TO
CHART - ICAO THR RWY22 - ELEV 561 FT

APP : 125.55 MHz
 TWR : 118.05, 236.6 MHz
 ATIS : 303 kHz

BURI RAM / Buri ram (VTUO)

RNAV (GNSS) RWY22



OCA/H	A	B	C	D	NM to NEXT WPT	1.4 NM	2 NM	3 NM	FAF		
LNAV/VNAV	850 (289)				Altitude (Height)	1050 (489)	1245 (684)	1560 (999)	1900 (1339)		
LNAV	1050 (489)				Ground speed	knot 70	90	100	120	140	160
Circling (OCH AAL)	1100 (510)		1300 (710)		Rate of descent 5.2%	ft/min 369	474	527	632	737	843

CHANGE : TWR FREQUENCIES.

MISSED APPROACH :
 Speed restricted to **MAX IAS 200 KT** until after turn.
 Climb on track 216° to 1100 FT,
 then turn left direct to IF
 at 3000 FT
 and hold or as directed by ATC.

RDH 50 FT
 TA 11000
 ELEV 561 FT (THR RWY22)