

**STANDARD DEPARTURE CHART -
INSTRUMENT (SID) - ICAO**

TRANSITION ALTITUDE
11000 FT

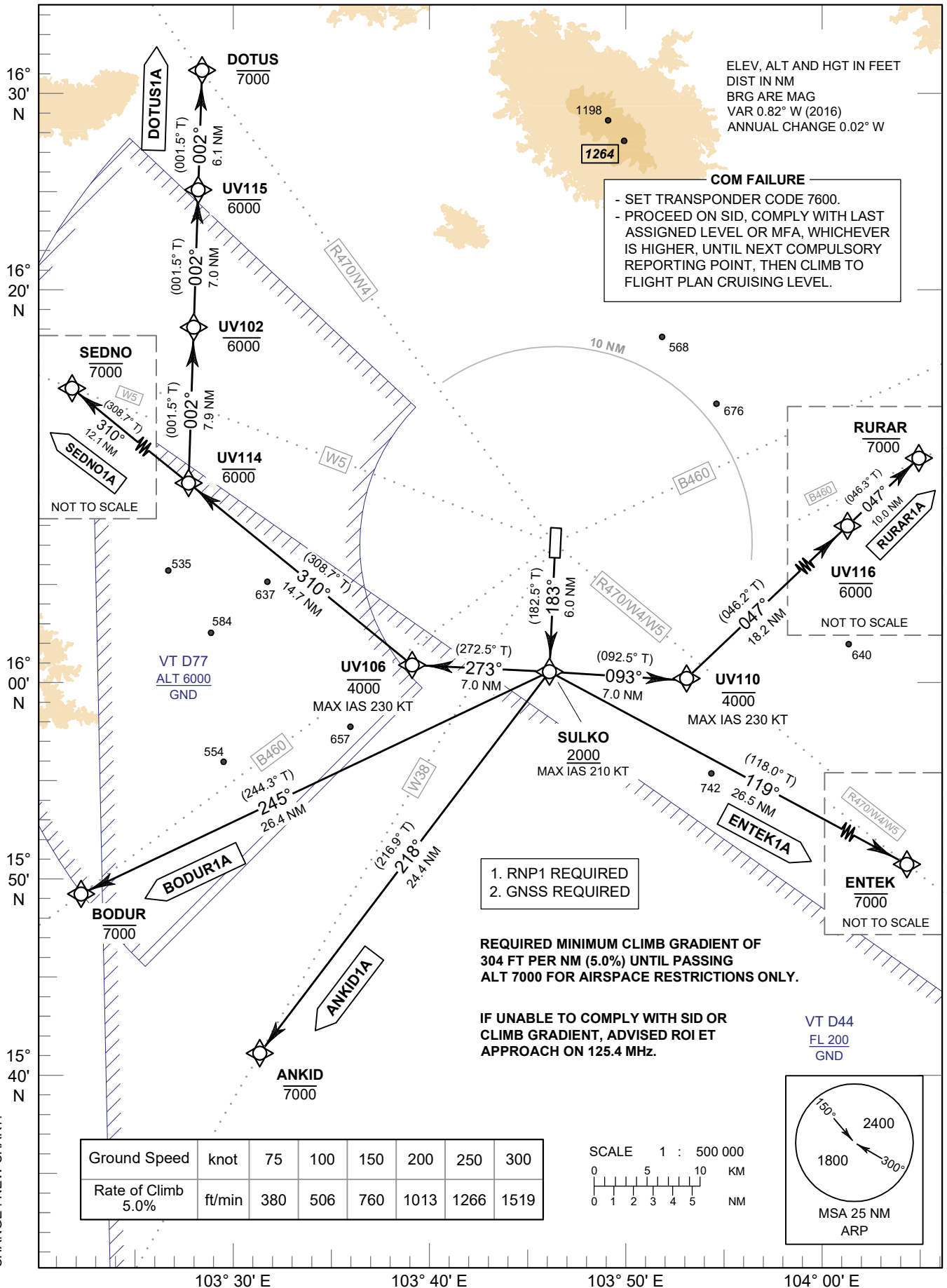
APP : 125.4 MHz
TWR : 119.75 , 236.6 MHz
ATIS : 319 kHz

**ROI ET / Roi Et (VTUV)
RNAV RWY18**

ANKID1A BODUR1A DOTUS1A
ENTEK1A RURAR1A SEDNO1A

ELEV, ALT AND HGT IN FEET
DIST IN NM
BRG ARE MAG
VAR 0.82° W (2016)
ANNUAL CHANGE 0.02° W

COM FAILURE
- SET TRANSPONDER CODE 7600.
- PROCEED ON SID, COMPLY WITH LAST
ASSIGNED LEVEL OR MFA, WHICHEVER
IS HIGHER, UNTIL NEXT COMPULSORY
REPORTING POINT, THEN CLIMB TO
FLIGHT PLAN CRUISING LEVEL.



NOT TO SCALE

NOT TO SCALE

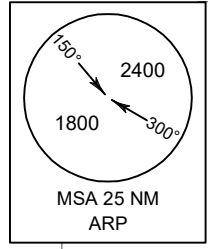
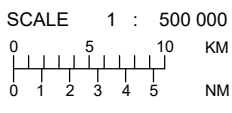
NOT TO SCALE

1. RNP1 REQUIRED
2. GNSS REQUIRED

**REQUIRED MINIMUM CLIMB GRADIENT OF
304 FT PER NM (5.0%) UNTIL PASSING
ALT 7000 FOR AIRSPACE RESTRICTIONS ONLY.**

**IF UNABLE TO COMPLY WITH SID OR
CLIMB GRADIENT, ADVISED ROI ET
APPROACH ON 125.4 MHz.**

Ground Speed	knot	75	100	150	200	250	300
Rate of Climb 5.0%	ft/min	380	506	760	1013	1266	1519



CHANGE : NEW CHART.