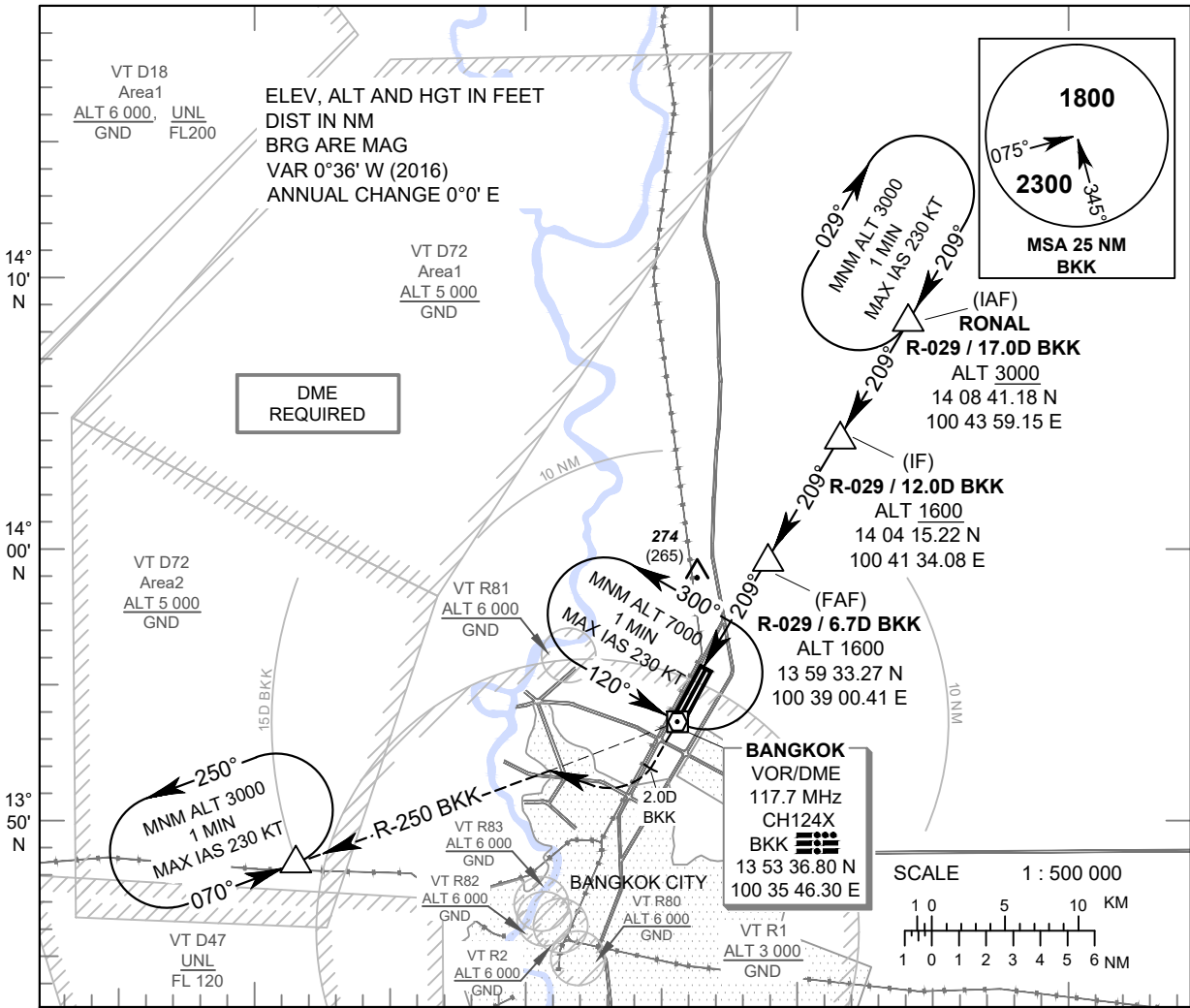


**INSTRUMENT APPROACH CHART - ICAO**      **AERODROME ELEV 9 FT**  
**HEIGHTS RELATED TO AERODROME ELEV**

APP : 119.1, 262.5  
 : 119.4, 262.5  
 : 120.3, 262.5  
 : 121.7, 262.5  
 : 122.35, 262.5  
 : 124.35, 262.5  
 : 125.2, 262.5  
 DAR : 125.5, 262.5  
 TWR : 118.1, 236.6  
 ATIS : 126.4, 344.6

**BANGKOK / Don Mueang Intl (VTBD)**

**VOR RWY21R**



**MISSED APPROACH :**

**No turn before MAPt.**

Climb straight ahead to VOR/DME BKK until 2 DME BKK outbound then turn right continue climb on R-250 BKK VOR to 3000 FT and hold at 15 DME BKK VOR or as directed by ATC.

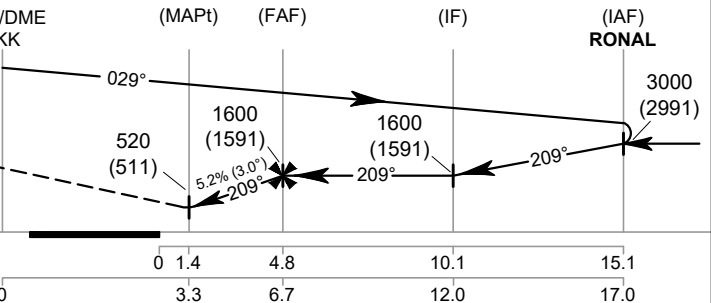
ELEV 7 FT

(THR RWY21R)

TA 11000

NM FM THR 21R

DME FM VOR/DME



OCA/H

A B C D

Distance (BKK)

3.3 DME 4 DME 5 DME 6 DME

Straight - in Approach

520 (511)

Altitude (Height)

520 (511) 730 (721) 1050 (1041) 1360 (1351)

Circling (OCH AAL)

700 (691) 800 (791) 1100 (1091)

FAF-MAPt 3.4 NM (min:s)

2:02 1:42 1:27 1:17 1:08 1:01

Rate of descent (ft/min)

531 637 743 849 955 1061

CHANGE: REALIGNMENT; FREQUENCIES; MAG VAR; ANNUAL CHANGE ADDED.  
 VT R82 AND VT R83 ADDED; PROFILE VIEW; CIRCLING CAT D.  
 MORSE CODE OF RADIO NAVIGATION AIDS ADDED. MAG TRACKS.  
 LANDING MINIMA TABLE.