

STANDARD DEPARTURE CHART - INSTRUMENT (SID) - ICAO

TRANSITION ALTITUDE
11000 FT

SPEED RESTRICTION
MAX IAS 250 KT AT OR
BELOW ALT 10000 FT
UNLESS OTHERWISE
AUTHORIZED BY ATC.

APP : 119.1, 262.5
: 120.3, 262.5
: 121.7, 262.5
: 122.35, 262.5
: 124.35, 262.5
: 125.2, 262.5

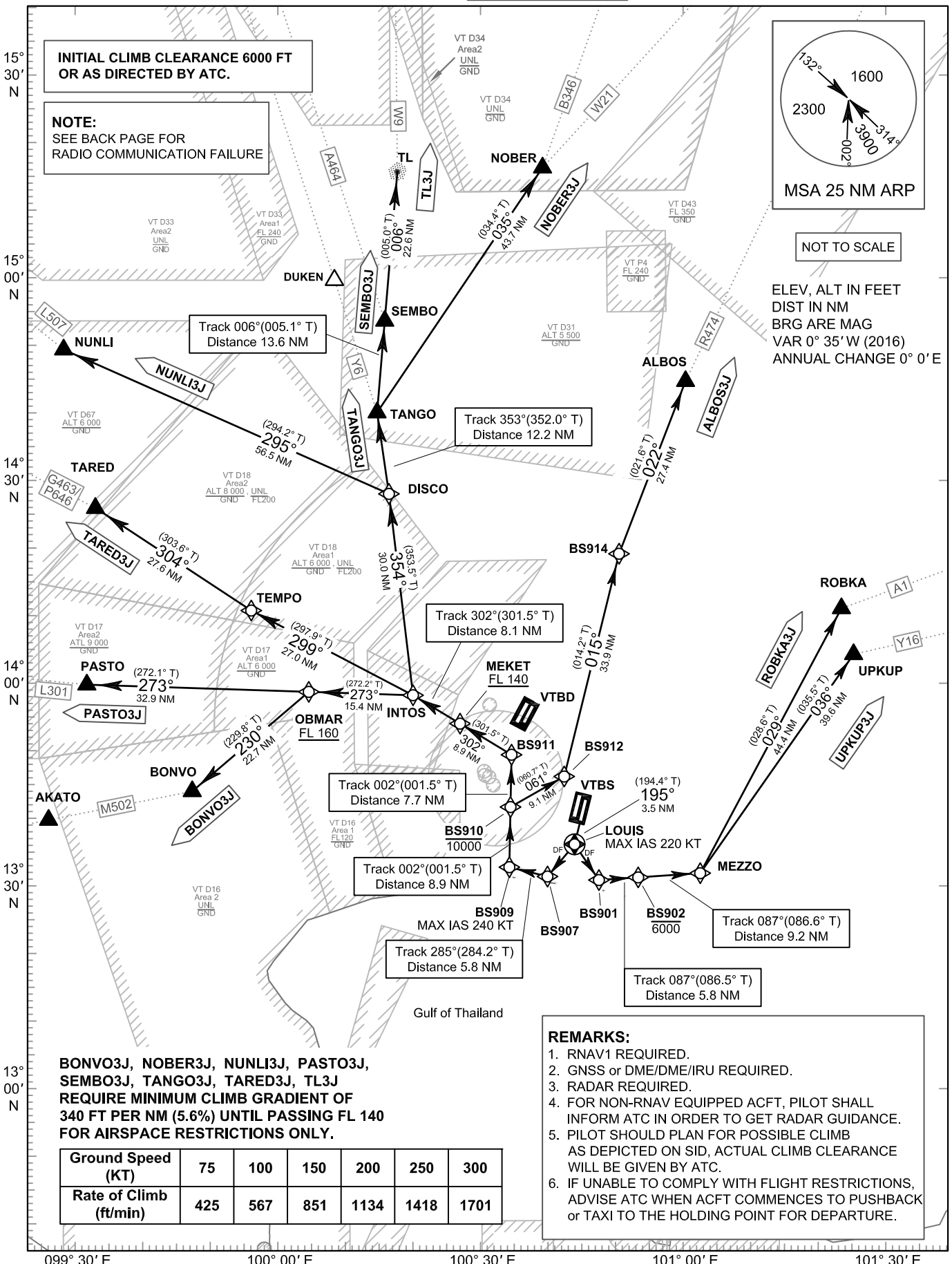
ARR : 121.1
: 126.3

TWR : 118.2, 274.5
: 119.0

ATIS : 133.6, 278.6

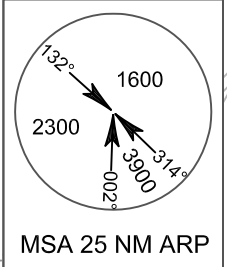
**BANGKOK/Suvarnabhumi Intl (VTBS)
RNAV RWY19L**

ALBOS3J BONVO3J
NOBER3J NUNLI3J PASTO3J
ROBKA3J SEMBO3J TANGO3J
TARED3J TL3J UPKUP3J



INITIAL CLIMB CLEARANCE 6000 FT OR AS DIRECTED BY ATC.

NOTE:
SEE BACK PAGE FOR
RADIO COMMUNICATION FAILURE



NOT TO SCALE

ELEV. ALT IN FEET
DIST IN NM
BRG ARE MAG
VAR 0° 35' W (2016)
ANNUAL CHANGE 0° 0' E

**BONVO3J, NOBER3J, NUNLI3J, PASTO3J,
SEMBO3J, TANGO3J, TARED3J, TL3J
REQUIRE MINIMUM CLIMB GRADIENT OF
340 FT PER NM (5.6%) UNTIL PASSING FL 140
FOR AIRSPACE RESTRICTIONS ONLY.**

Ground Speed (KT)	75	100	150	200	250	300
Rate of Climb (ft/min)	425	567	851	1134	1418	1701

REMARKS:

1. RNAV1 REQUIRED.
2. GNSS or DME/DME/IRU REQUIRED.
3. RADAR REQUIRED.
4. FOR NON-RNAV EQUIPPED ACFT, PILOT SHALL INFORM ATC IN ORDER TO GET RADAR GUIDANCE.
5. PILOT SHOULD PLAN FOR POSSIBLE CLIMB AS DEPICTED ON SID, ACTUAL CLIMB CLEARANCE WILL BE GIVEN BY ATC.
6. IF UNABLE TO COMPLY WITH FLIGHT RESTRICTIONS, ADVISE ATC WHEN ACFT COMMENCES TO PUSHBACK or TAXI TO THE HOLDING POINT FOR DEPARTURE.

CHANGE: NEW PROCEDURES.