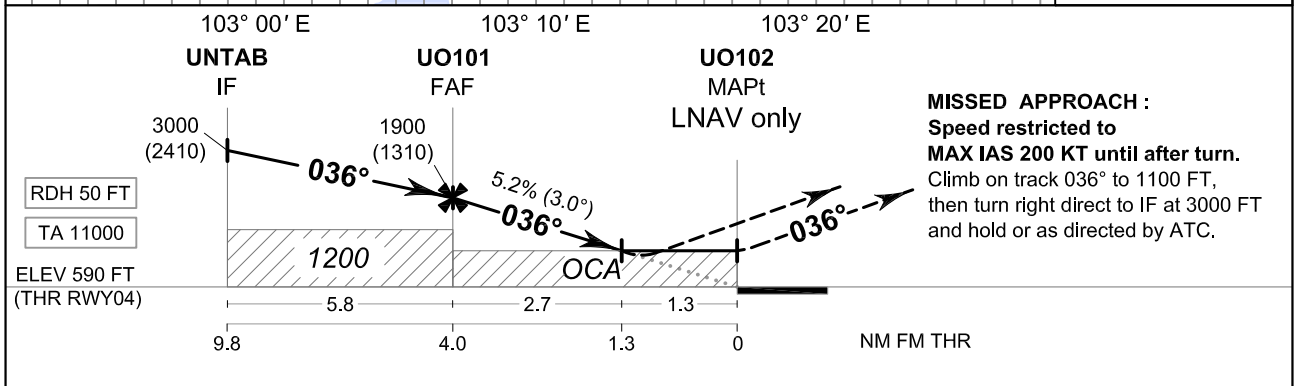
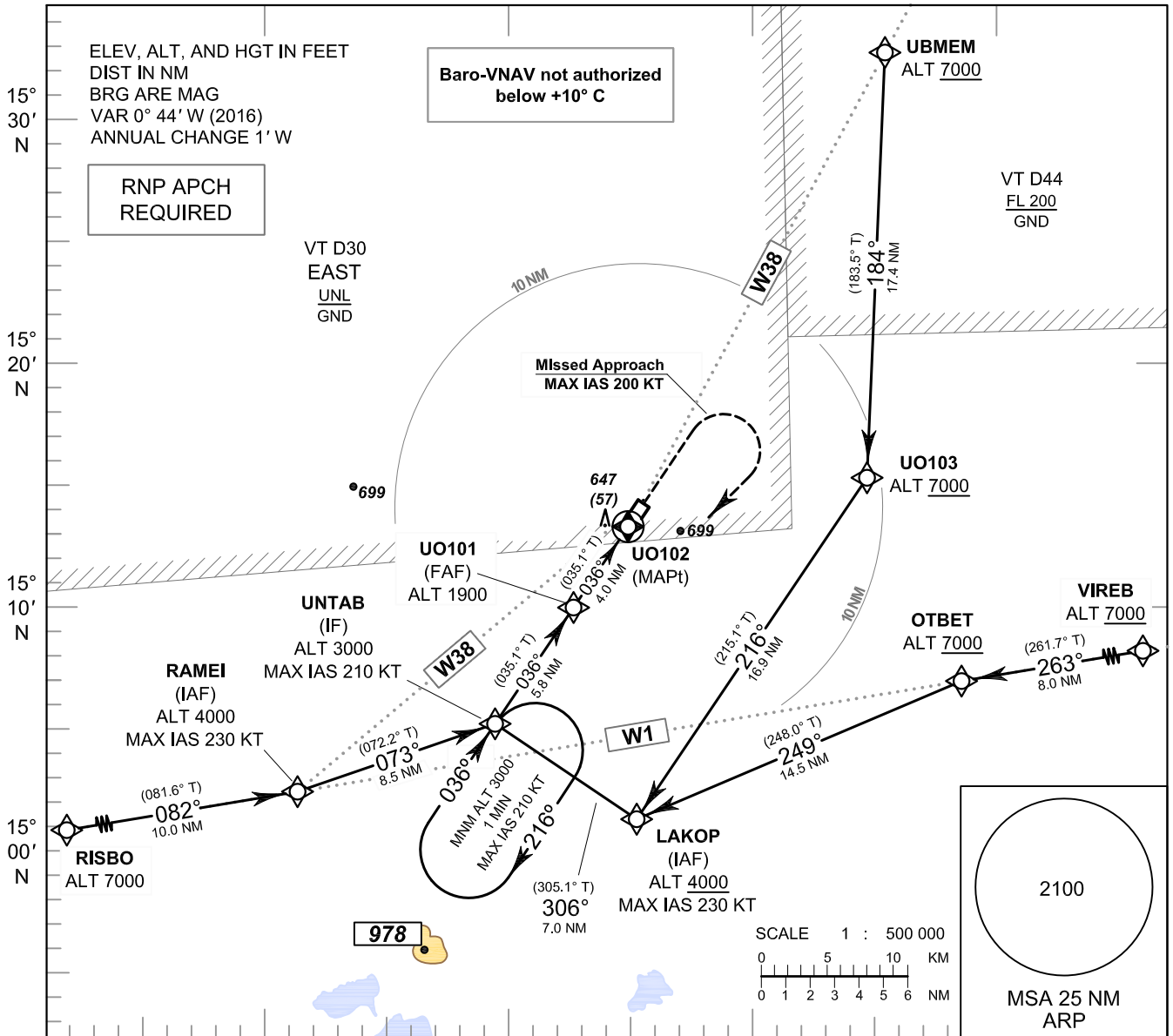


**INSTRUMENT APPROACH CHART - ICAO** **AERODROME ELEV 590 FT**  
**HEIGHTS RELATED TO THR RWY04 - ELEV 590 FT**

APP : 125.55 MHz  
 TWR : 118.05, 236.6 MHz  
 ATIS : 303 kHz

**BURI RAM / Buri ram (VTUO)**

**RNAV (GNSS) RWY04**



**MISSED APPROACH :**  
 Speed restricted to **MAX IAS 200 KT** until after turn.  
 Climb on track 036° to 1100 FT, then turn right direct to IF at 3000 FT and hold or as directed by ATC.

OCA/H	A	B	C	D	NM to NEXT WPT	FAF	3NM	2NM	1.3NM			
LNAV/VNAV	900 (310)				Altitude (Height)	1900 (1310)	1590 (1000)	1270 (680)	1050 (460)			
LNAV	1050 (460)				Ground speed	knot	70	90	100	120	140	160
Circling (OCH AAL)	1100 (510)		1300 (710)		Rate of descent	ft/min	369	474	527	632	737	843

CHANGE : TWR FREQUENCIES.