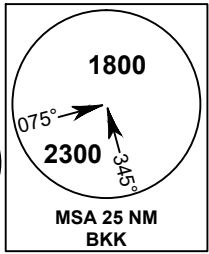
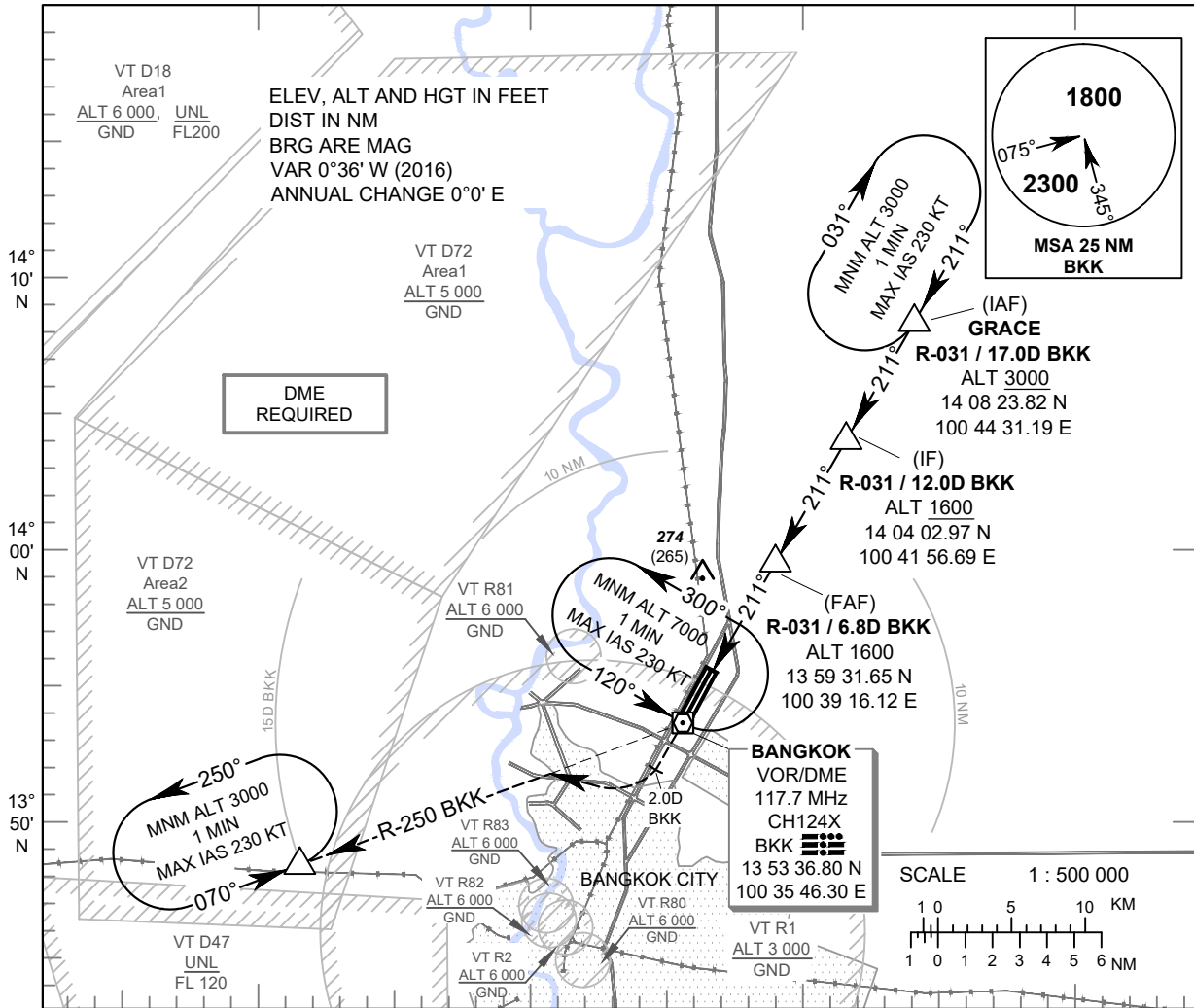


INSTRUMENT APPROACH CHART - ICAO **AERODROME ELEV 9 FT**
HEIGHTS RELATED TO AERODROME ELEV

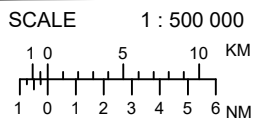
APP : 119.1, 262.5
 : 119.4, 262.5
 : 120.3, 262.5
 : 121.7, 262.5
 : 122.35, 262.5
 : 124.35, 262.5
 : 125.2, 262.5
 DAR : 125.5, 262.5
 TWR : 118.1, 236.6
 ATIS : 126.4, 344.6

BANGKOK / Don Mueang Intl (VTBD)

VOR RWY21L

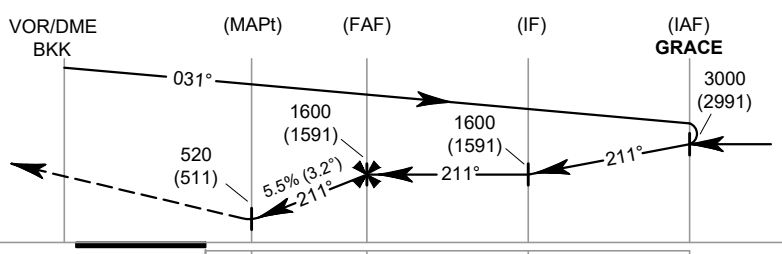


BANGKOK
 VOR/DME
 117.7 MHz
 CH124X
 BKK
 13 53 36.80 N
 100 35 46.30 E



Descent gradient not coincident with PAPI

MISSED APPROACH :
No turn before MAPt.
 Climb straight ahead to VOR/DME BKK until 2 DME BKK outbound then turn right continue climb on R-250 BKK VOR to 3000 FT and hold at 15 DME BKK VOR or as directed by ATC.
 ELEV 7 FT



| OCA/H | NM FM THR 21L | | | | Distance (BKK) | DME | | | | | |
|------------------------|---------------|-----------|-------------|-----------------|-------------------|-----------|-----------|-------------|-------------|------|------|
| | A | B | C | D | | 3.6 DME | 4 DME | 5 DME | 6 DME | | |
| Straight - in Approach | 520 (511) | | | | Altitude (Height) | 520 (511) | 700 (691) | 1040 (1031) | 1370 (1361) | | |
| | | | | | Ground speed | knot | 100 | 120 | 140 | 160 | 180 |
| Circling (OCH AAL) | 700 (691) | 800 (791) | 1100 (1091) | FAF-MAPt 3.2 NM | (min:s) | 1:55 | 1:36 | 1:22 | 1:12 | 1:04 | 0:58 |
| | | | | Rate of descent | (ft/min) | 557 | 668 | 780 | 891 | 1003 | 1114 |

CHANGE: REALIGNMENT, FREQUENCIES, MAG VAR, ANNUAL CHANGE ADDED.
 VT R82 AND VT R83 ADDED, PROFILE VIEW, CIRCLING CAT D.
 MORSE CODE OF RADIO NAVIGATION AIDS ADDED. MAG TRACKS.
 LANDING MINIMA TABLE.