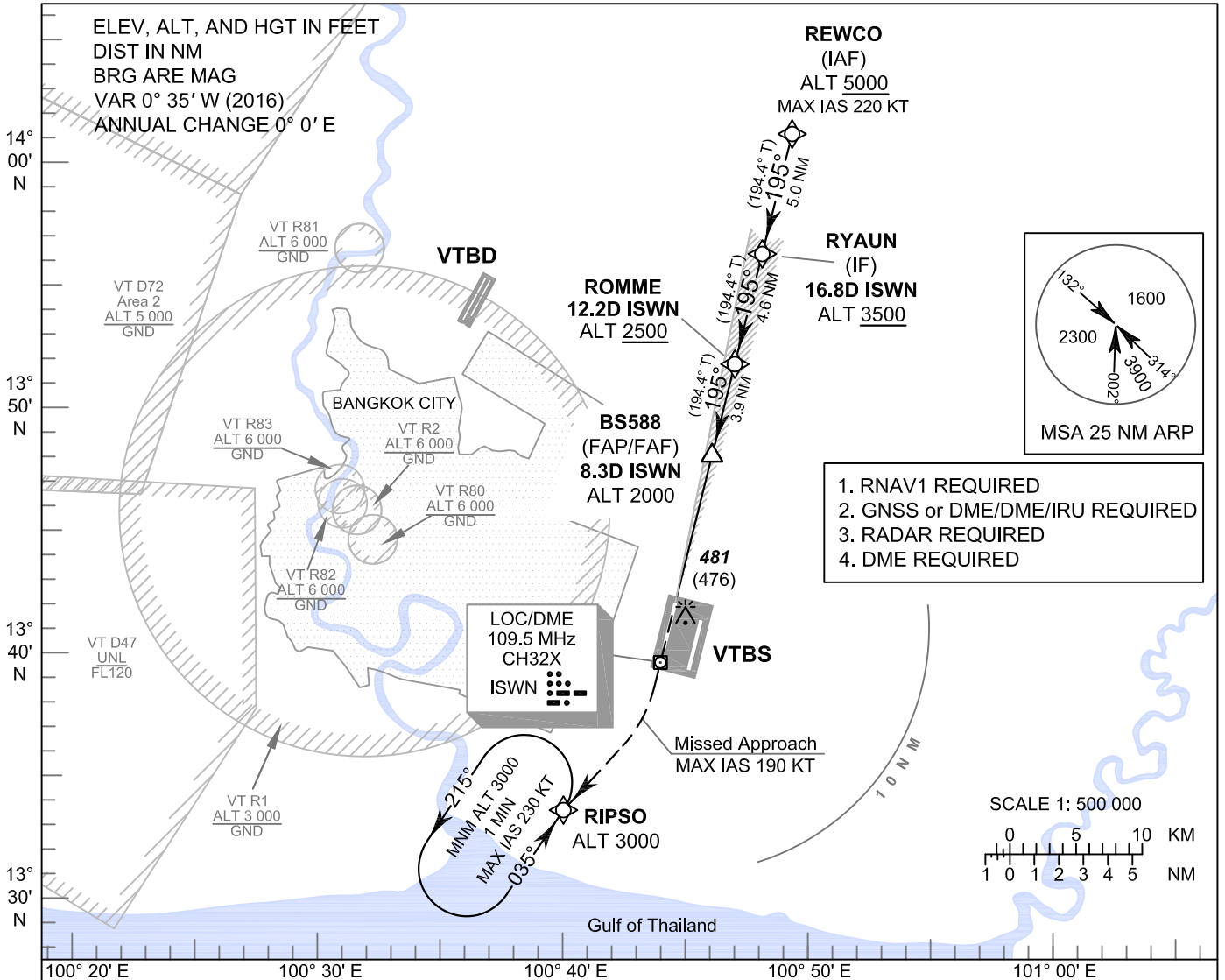


**INSTRUMENT APPROACH CHART - ICAO**      **AERODROME ELEV 5 FT**  
**HEIGHTS RELATED TO THR RWY19R - ELEV 5 FT**

APP : 119.1, 262.5  
 : 120.3, 262.5  
 : 121.7, 262.5  
 : 122.35, 262.5  
 : 124.35, 262.5  
 : 125.2, 262.5  
 ARR : 121.1  
 : 126.3  
 TWR : 118.2, 274.5  
 : 119.0  
 ATIS : 133.6, 278.6

**BANGKOK / Suvarnabhumi Intl (VTBS)**

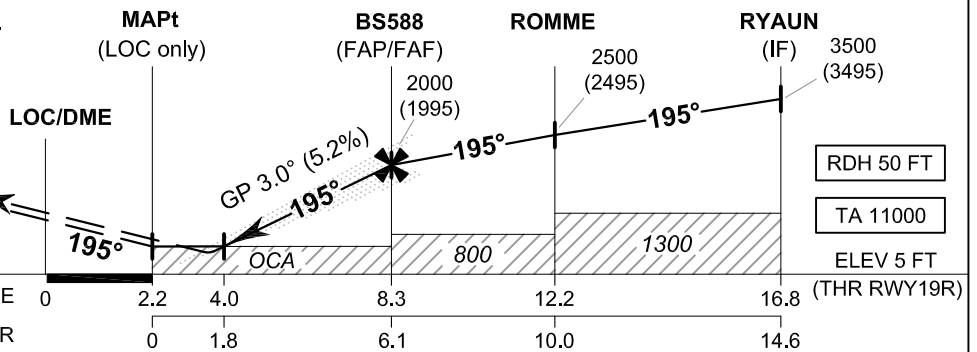
**ILS or LOC z RWY19R**  
**CAT II**



1. RNAV1 REQUIRED
2. GNSS or DME/DME/IRU REQUIRED
3. RADAR REQUIRED
4. DME REQUIRED

**MISSED APPROACH:**

**No turn before MAPt (for LOC only).**  
**Speed restricted to MAX IAS 190 KT until after turn.**  
 Climb to 1000 FT on track 195°, then climbing right turn direct to RIPS0 at 3000 FT and hold or as directed by ATC.  
 (If unable to reach 3000 FT at RIPS0, continue climb in the holding pattern.)



		DME FM LOC/DME				NM FM THR							
		0 2.2 4.0 8.3 12.2 16.8				0 1.8 6.1 10.0 14.6							
Straight-in Approach	CAT I	205 (200)				GS OUT	Distance (ISWN)	4 D	5 D	6 D	7 D	8 D	FAF
	CAT II	105 (100)					Altitude (Height)	620 (615)	940 (935)	1255 (1250)	1570 (1565)	1890 (1885)	2000 (1995)
LOC only		620 (615)				Ground speed	knot	70	90	100	120	140	160
Circling (OCH AAL)		800 (795)		900 (895)		Rate of descent (5.2%)	ft/min	369	474	527	632	737	843

CHANGE: IAF REVISED.