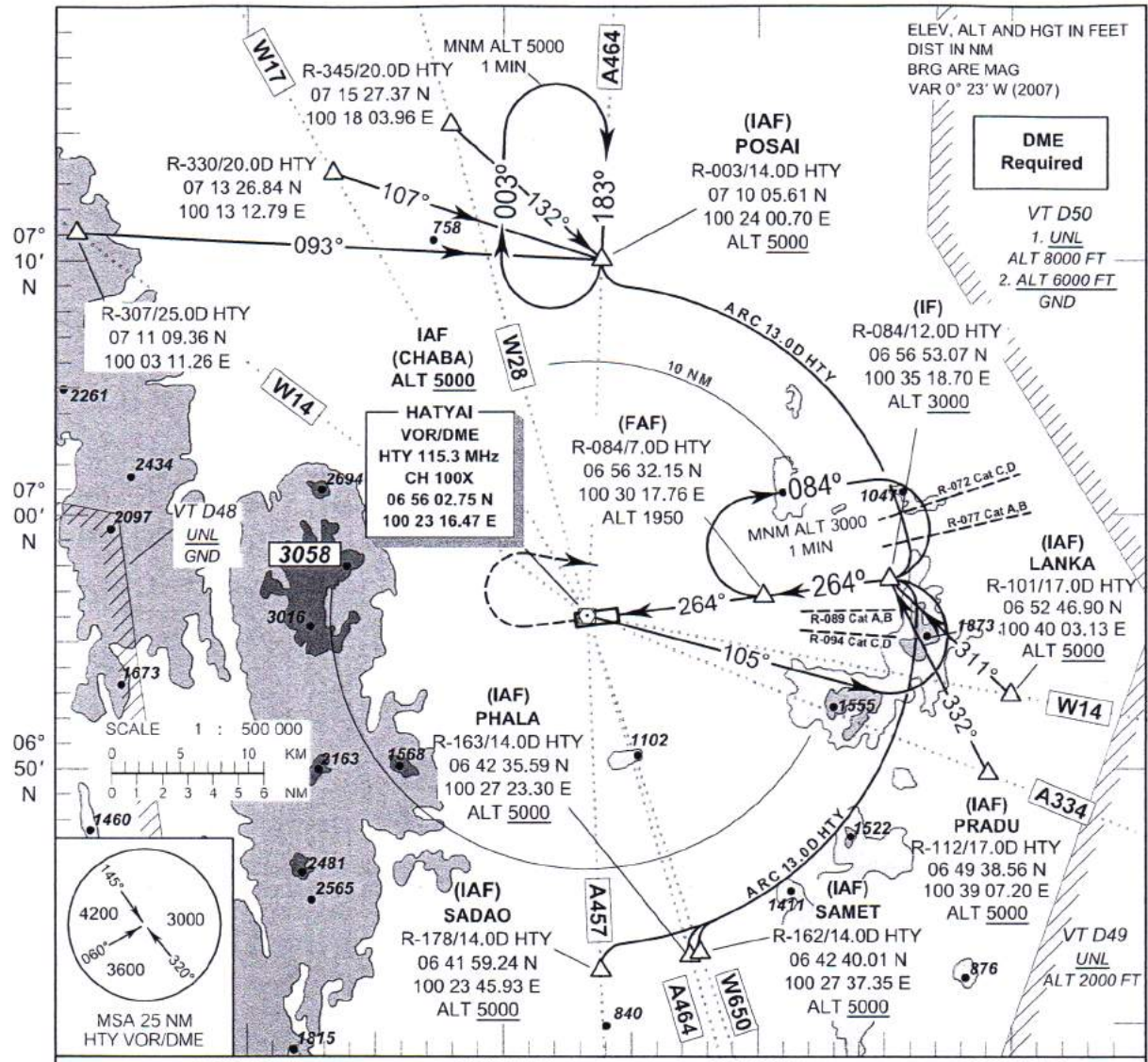


INSTRUMENT AERODROME ELEV 90 FT
APPROACH HEIGHTS RELATED TO
CHART - ICAO THR RWY26 - ELEV 58 FT

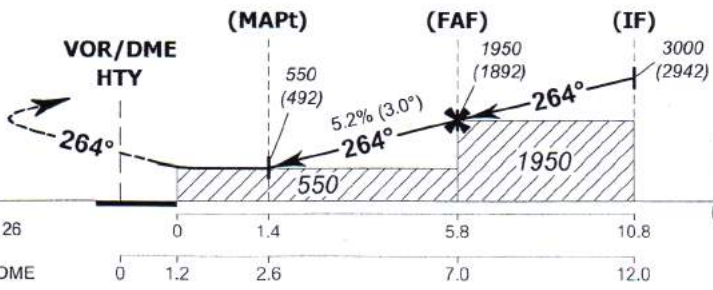
APP : 126.7
 TWR : 118.1 , 236.6
 ATIS : 128.8

SONGKHLA / Hat Yai INTL (VTSS)

VOR RWY26



MISSED APPROACH :
 Climb straight ahead to 1000 FT
 then turn right and continue climb
 to 3000 FT and hold at FAF
 or as directed by ATC.



| OCA/H | A | B | C | D | Distance (HTY) | 2.6D | 3D | 4D | 5D | 6D | FAF | |
|------------------------|-----------|-----------|-----------|-----------|-------------------|-----------|-----------|-----------|-------------|-------------|-------------|-----|
| Straight - in approach | 550 (492) | | | | Altitude (Height) | 550 (492) | 680 (622) | 995 (937) | 1310 (1252) | 1625 (1567) | 1950 (1892) | |
| | | | | | Ground speed | knot | 70 | 90 | 100 | 120 | 140 | 160 |
| Circling (OCH AAL) | 550 (460) | 680 (590) | 780 (690) | 780 (690) | Rate of descent | (ft/min) | 369 | 474 | 527 | 632 | 737 | 843 |