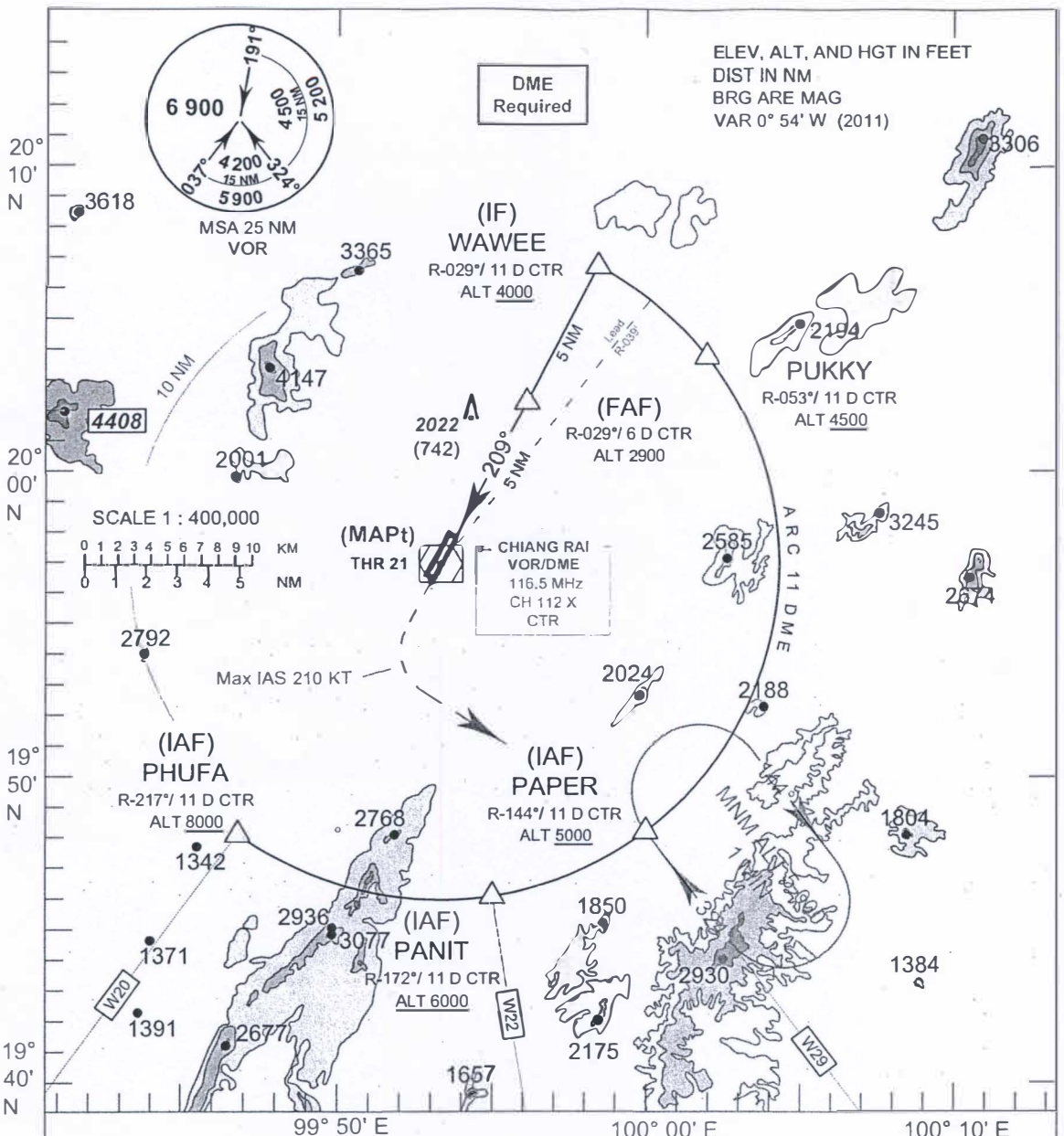


INSTRUMENT AERODROME ELEV 1280 FT  
 APPROACH HEIGHTS RELATED TO  
 CHART-ICAO AERODROME ELEV

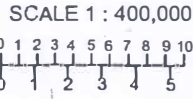
APP : 120.05, 257.80  
 TWR : 118.40, 236.60

CHIANG RAI/  
 MAE FAH LUANG-Chiang Rai (VTCT)  
 VOR RWY 21



ELEV, ALT, AND HGT IN FEET  
 DIST IN NM  
 BRG ARE MAG  
 VAR 0° 54' W (2011)

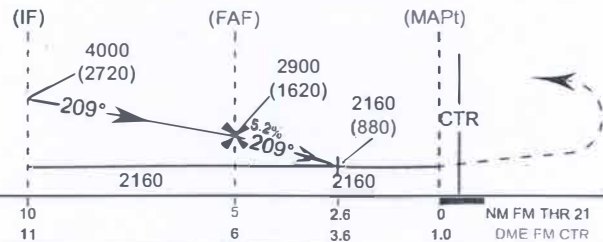
DME  
 Required



Max IAS 210 KT

TA 11 000

**Missed Approach :**  
 No Turn Before MAPt.  
 Climb straight ahead to 4000 FT,  
 then turn left to intercept  
 R-144° and proceed to PAPER  
 at 5000 FT and hold or as  
 directed by ATC.



ELEV 1275 FT  
 (THR RWY 21)

OCA/H	A	B	C	D	Distance(CTR)	3.6 D	4 D	5 D	FAF			
Straight-in approach	2160 (880)				Altitude	2160 (880)	2280 (1000)	2600 (1320)	2900 (1620)			
					Ground Speed (GS)	knot	100	120	140	160	180	200
Circling	1850 (570)	2470 (1190)			Rate of descent	(ft/min)	530	635	745	850	955	1060