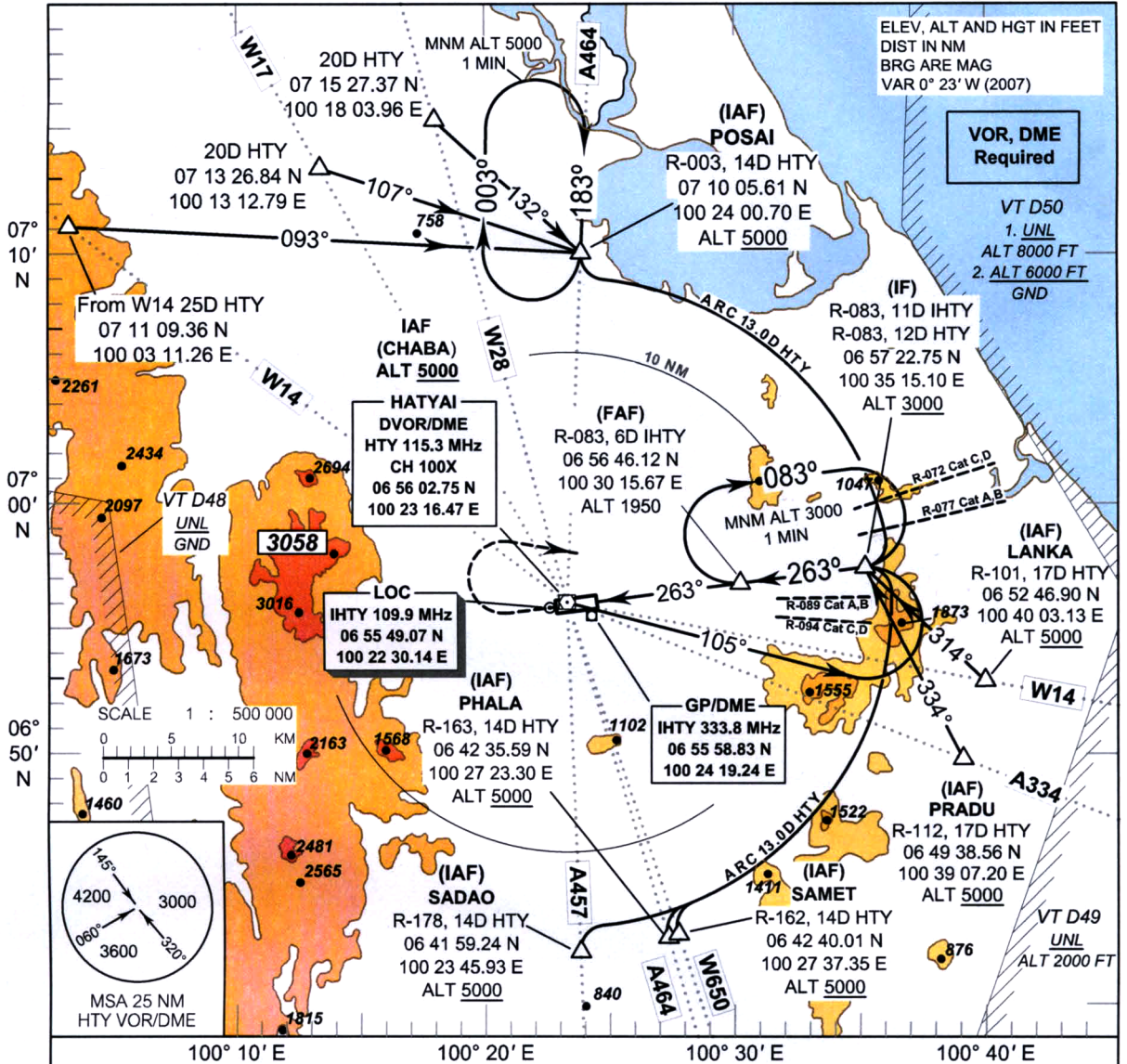


INSTRUMENT AERODROME ELEV 90 FT
APPROACH HEIGHTS RELATED TO
CHART - ICAO THR RWY26 - ELEV 58 FT

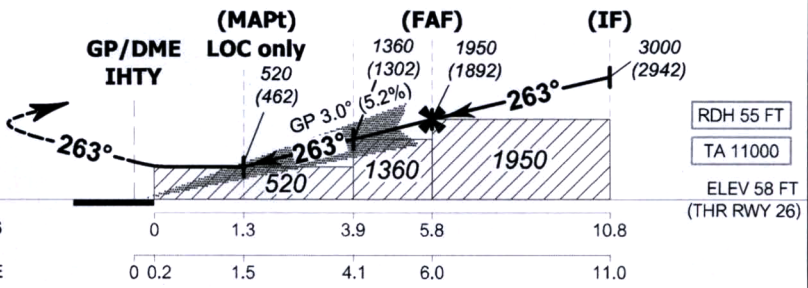
APP : 126.7
 TWR : 118.1 , 236.6
 ATIS : 128.8

SONGKHLA / Hat Yai INTL (VTSS)

ILS or LOC RWY 26



MISSED APPROACH :
 Climb straight ahead to 600 FT
 then turn right and continue climb
 to 3000 FT and hold at FAF
 or as directed by ATC.



OCA/H		A	B	C	D	Distance (IHTY)	2D	3D	4D	5D	FAF		
Straight - in approach	CAT I	230	240	250	260	Altitude (Height)	680	1000	1315	1630	1950		
		(172)	(182)	(192)	(202)		(622)	(942)	(1257)	(1572)	(1892)		
LOC Only		520 (462)				Ground speed (GS)	knot	70	90	100	120	140	160
Circling (OCH AAL)		550	680	780	780		Rate of descent (ft/min)	369	474	527	632	737	843
		(460)	(590)	(690)	(690)								