

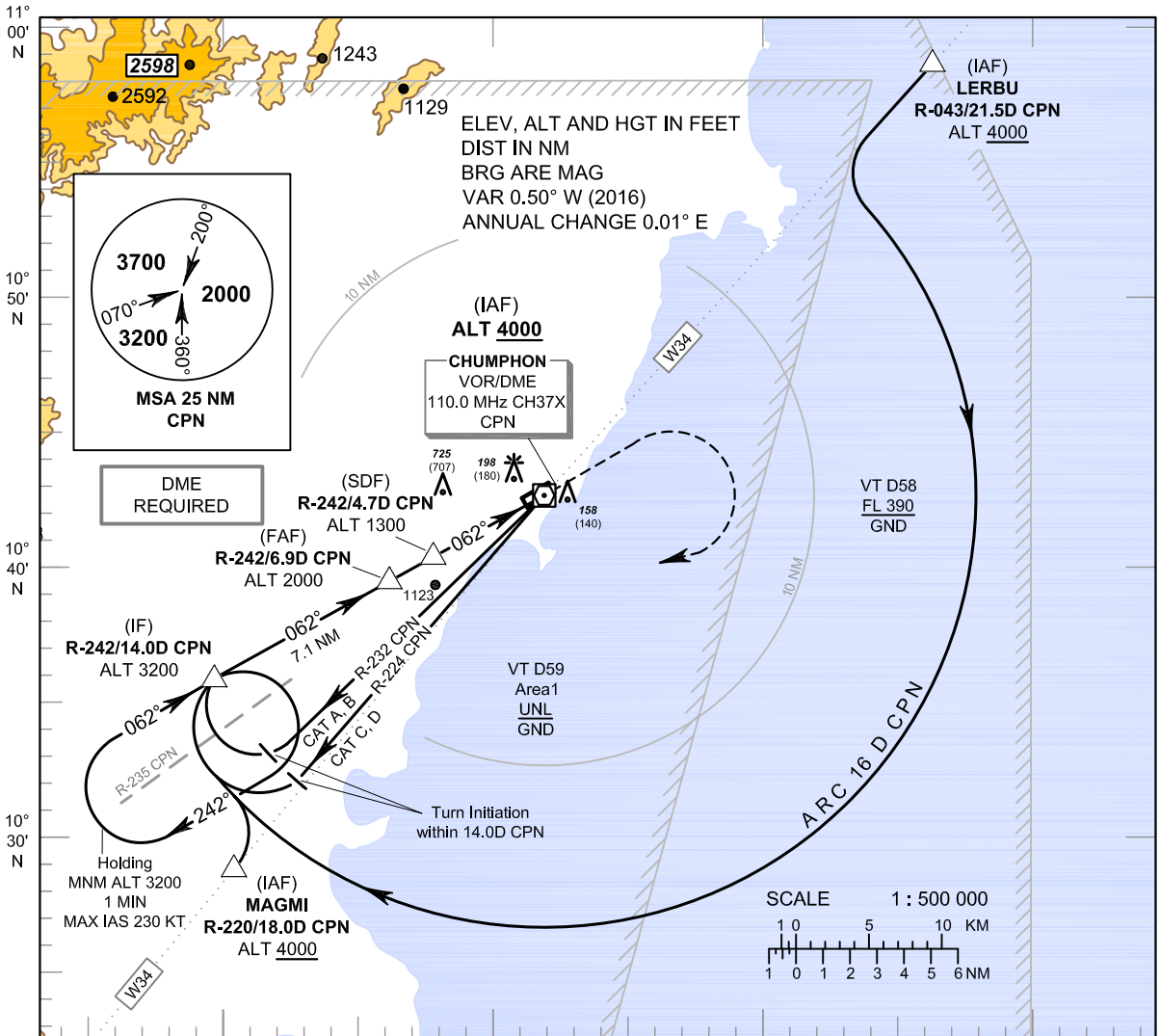
**INSTRUMENT  
APPROACH  
CHART - ICAO**

**AERODROME ELEV 18 FT**  
HEIGHTS RELATED TO  
AERODROME ELEV

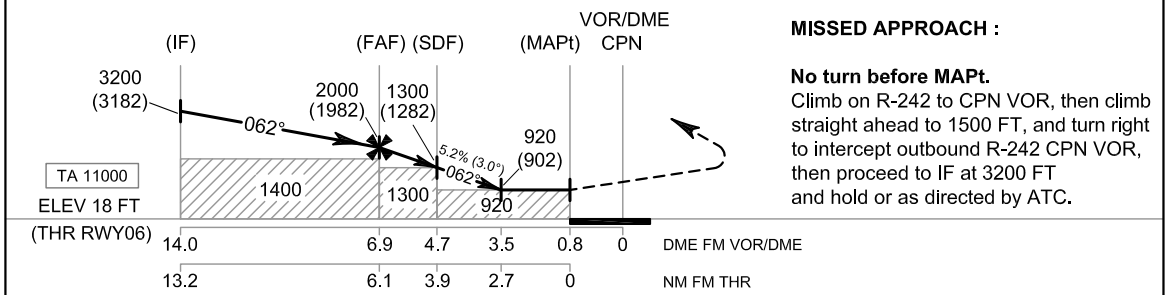
APP : 119.75 , 129.6  
: 305.4  
TWR : 122.15 , 236.6

**CHUMPHON / Chumphon (VTSE)**

**VOR RWY06**



099° 10' E      099° 20' E      099° 30' E      099° 40' E



**MISSED APPROACH :**  
**No turn before MAPt.**  
Climb on R-242 to CPN VOR, then climb straight ahead to 1500 FT, and turn right to intercept outbound R-242 CPN VOR, then proceed to IF at 3200 FT and hold or as directed by ATC.

OCA/H	A	B	C	D	Distance to CPN	FAF	6 D	SDF	4 D	3.5 D		
Straight - in Approach	920 (902)				Altitude (Height)	2000 (1982)	1710 (1692)	1300 (1282)	1080 (1062)	920 (902)		
					Ground speed	knot	70	90	100	120	140	160
Circling (OCH AAL)	1500 (1482)				Rate of descent (5.2%)	ft/min	369	474	527	632	737	843