

**STANDARD DEPARTURE CHART-  
INSTRUMENT (SID) - ICAO**

TRANSITION ALTITUDE  
11000 FT

**SPEED RESTRICTION**  
MAX IAS 250 KT AT OR  
BELOW ALT 10000 FT  
UNLESS OTHERWISE  
AUTHORIZED BY ATC.

APP : 119.1, 262.5  
: 119.4, 262.5  
: 120.3, 262.5  
: 121.7, 262.5  
: 122.35, 262.5  
: 124.35, 262.5  
: 125.2, 262.5  
DAR : 125.5, 262.5  
TWR : 118.1, 236.6  
ATIS : 126.4, 344.6

**BANGKOK/Don Mueang Intl (VTBD)  
RNAV RWY21L**

BATOK3C GORSI3C HHN3C  
KASNI3C KIGOB3C REGOS3C  
RYN3C SABIS3C UKERA3C

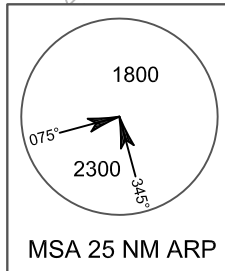
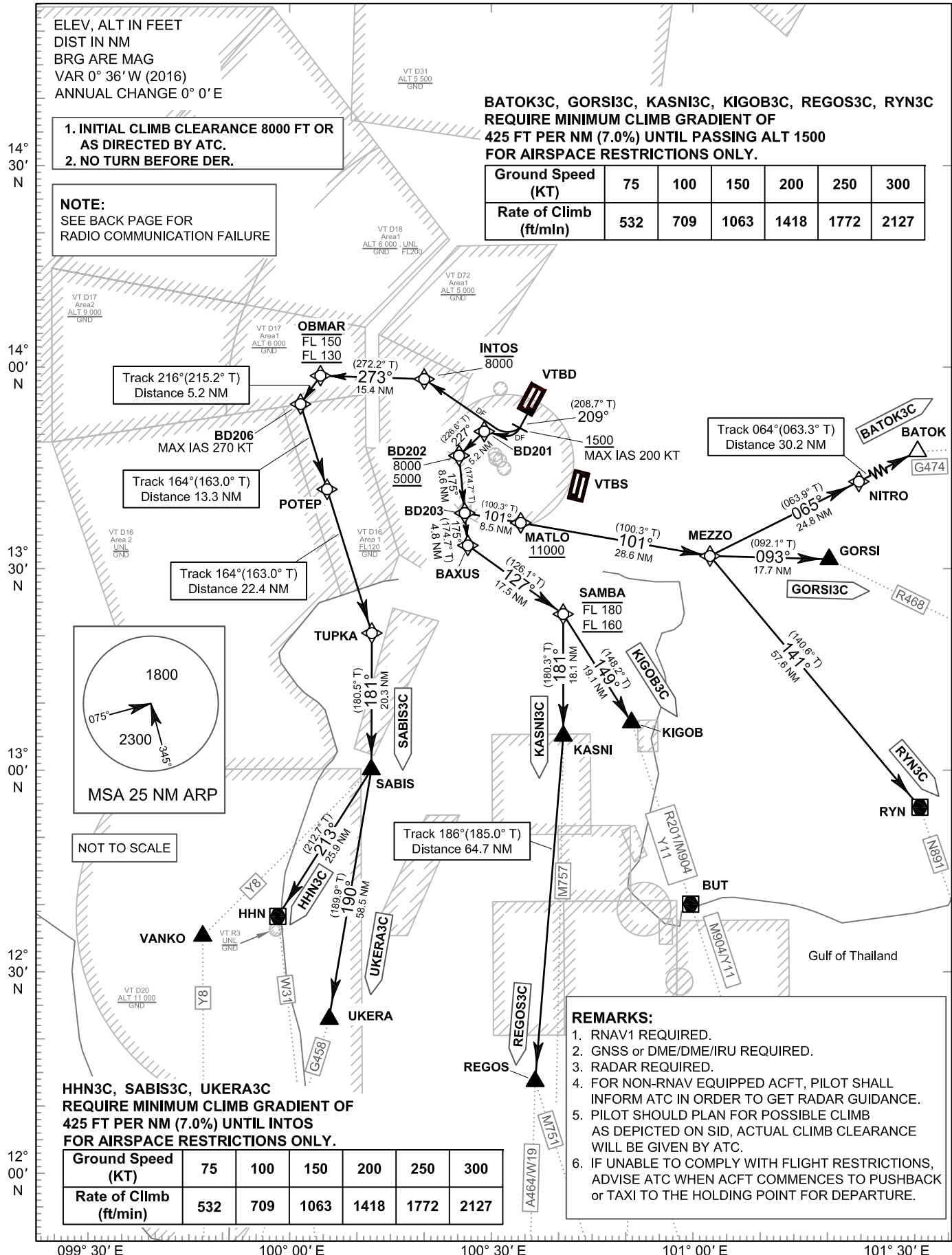
ELEV, ALT IN FEET  
DIST IN NM  
BRG ARE MAG  
VAR 0° 36' W (2016)  
ANNUAL CHANGE 0° 0' E

1. INITIAL CLIMB CLEARANCE 8000 FT OR AS DIRECTED BY ATC.
2. NO TURN BEFORE DER.

**NOTE:**  
SEE BACK PAGE FOR  
RADIO COMMUNICATION FAILURE

**BATOK3C, GORSI3C, KASNI3C, KIGOB3C, REGOS3C, RYN3C  
REQUIRE MINIMUM CLIMB GRADIENT OF  
425 FT PER NM (7.0%) UNTIL PASSING ALT 1500  
FOR AIRSPACE RESTRICTIONS ONLY.**

Ground Speed (KT)	75	100	150	200	250	300
Rate of Climb (ft/min)	532	709	1063	1418	1772	2127



NOT TO SCALE

**HHN3C, SABIS3C, UKERA3C  
REQUIRE MINIMUM CLIMB GRADIENT OF  
425 FT PER NM (7.0%) UNTIL INTOS  
FOR AIRSPACE RESTRICTIONS ONLY.**

Ground Speed (KT)	75	100	150	200	250	300
Rate of Climb (ft/min)	532	709	1063	1418	1772	2127

- REMARKS:**
1. RNAV1 REQUIRED.
  2. GNSS or DME/DME/IRU REQUIRED.
  3. RADAR REQUIRED.
  4. FOR NON-RNAV EQUIPPED ACFT, PILOT SHALL INFORM ATC IN ORDER TO GET RADAR GUIDANCE.
  5. PILOT SHOULD PLAN FOR POSSIBLE CLIMB AS DEPICTED ON SID, ACTUAL CLIMB CLEARANCE WILL BE GIVEN BY ATC.
  6. IF UNABLE TO COMPLY WITH FLIGHT RESTRICTIONS, ADVISE ATC WHEN ACFT COMMENCES TO PUSHBACK or TAXI TO THE HOLDING POINT FOR DEPARTURE.

CHANGE: NEW PROCEDURES.