

VTUQ AD 2.1 AERODROME LOCATION INDICATOR AND NAME

VTUQ - NAKHON RATCHASIMA / NAKHON RATCHASIMA AIRPORT

VTUQ AD 2.2 AERODROME GEOGRAPHICAL AND ADMINISTRATIVE DATA

1	ARP coordinates and site at AD	145658.19N 1021845.86E Centre of RWY 1050 M from THR RWY06
2	Direction and distance from (city)	26 KM N
3	Elevation/Reference temperature	765 FT/41°C
4	Geoid Undulation at AD ELEV PSN	NIL
5	MAG VAR/Annual change	0.41°W (2016)/0°W
6	AD Administration, address, telephone, telefax, telex, AFS	Director of Nakhon Ratchasima Airport Nakhon Ratchasima Airport Amphoe Chalermprakiat Nakhon Ratchasima Province Thailand Tel: +664 425 5899 +664 425 9534 +664 425 9686-8 Fax: +664 425 9689 AFS: VTUQYDYX
7	Types of traffic permitted (IFR/VFR)	IFR/VFR
8	Remarks	Operator: Department of Airports

VTUQ AD 2.3 OPERATIONAL HOURS

1	Aerodrome Operator	2200-1400
2	Customs and immigration	On request
3	Health and sanitation	On request
4	AIS Briefing Office	HJ*
5	ATS Reporting Office (ARO)	HJ*
6	MET Briefing Office	2300-1200
7	ATS	2300-1100
8	Fuelling	NIL
9	Handling	NIL
10	Security	NIL
11	De-icing	NIL
12	Remarks	*Other this period 3 HRS PN to ATC

VTUQ AD 2.4 HANDLING SERVICES AND FACILITIES

1	Cargo-handling facilities	NIL
2	Fuel/oil types	NIL
3	Fuelling facilities/capacity	NIL
4	De-icing facilities	NIL
5	Hangar space for visiting aircraft	NIL
6	Repair facilities for visiting aircraft	NIL
7	Remarks	NIL

VTUQ AD 2.5 PASSENGER FACILITIES

1	Hotels	In the city
2	Restaurants	In the city
3	Transportation	Limousine
4	Medical facilities	NIL
5	Bank and Post Office	NIL
6	Tourist Office	NIL
7	Remarks	NIL

VTUQ AD 2.6 RESCUE AND FIRE FIGHTING SERVICES

1	AD category for fire fighting	Category 6
2	Rescue equipment	Yes
3	Capability for removal of disabled aircraft	NIL
4	Remarks	NIL

VTUQ AD 2.7 SEASONAL AVAILABILITY - CLEARING

1	Types of clearing equipment	NIL
2	Clearance priorities	NIL
3	Remarks	The aerodrome is available all seasons.

VTUQ AD 2.8 APRONS, TAXIWAYS AND CHECK LOCATIONS/POSITIONS DATA

1	Apron surface and strength	Surface: Concrete Strength: PCN 45/R/C/X/T
2	Taxiway width, surface and strength	Width: 23 M Surface: Concrete and asphalt Strength PCN 42/F/C/X/T
3	Altimeter checkpoint location and elevation	NIL
4	VOR checkpoints	NIL
5	INS checkpoints	NIL
6	Remarks	NIL

VTUQ AD 2.9 SURFACE MOVEMENT GUIDANCE AND CONTROL SYSTEM AND MARKINGS

1	Use of aircraft stand ID signs, TWY guide lines and visual docking/parking guidance system of aircraft stands	NIL
2	RWY and TWY markings and LGT	RWY and TWY: Marked and lighted
3	Stop bars	NIL
4	Remarks	NIL

VTUQ AD 2.10 AERODROME OBSTACLES

In approach/TKOF areas			In circling areas and at AD		Remarks
1			2		3
RWY/Area affected	Obstacle type Elevation Markings/LGT	Coordinates	Obstacle type Elevation Markings/LGT	Coordinates	
a	b	c	a	b	
NIL	NIL	NIL	NIL	NIL	NIL

VTUQ AD 2.11 METEOROLOGICAL INFORMATION PROVIDED

1	Associated MET Office	Aeronautical Meteorological Station-Nakhon Ratchasima, Lower Northeastern Meteorological Center, Thai Meteorological Department (TMD)
2	Hours of service MET Office outside hours	2300-1100 NIL
3	Office responsible for TAF preparation Periods of validity	Supply TAF from Lower Northeastern Meteorological Center 24 HR
4	Type of landing forecast Interval of issuance	TREND 1 HR
5	Briefing/consultation provided	Personal Consultation Tel: +664 425 8532
6	Flight documentation Language(s) used	NIL
7	Charts and other information available for briefing or consultation	S, U85, Daily Weather Forecast, satellite and radar images
8	Supplementary equipment available for providing information	Automated Weather Observation System (AWOS)
9	ATS units provided with information	Nakhon Ratchasima TWR
10	Additional information (limitation of service, etc.)	NIL

VTUQ AD 2.12 RUNWAY PHYSICAL CHARACTERISTICS

Designations RWY NR	TRUE BRG	Dimensions of RWY(M)	Strength (PCN) and surface of RWY and SWY	THR coordinates RWY end coordinates THR geoid undulation	THR elevation and highest elevation of TDZ of precision APP RWY
1	2	3	4	5	6
06	062.42°	2100x45	PCN 42/F/C/X/T Concrete and asphalt	145641.79N 1021815.01E	THR 765 FT TDZ 765 FT
24	242.42°	2100x45	PCN 42/F/C/X/T Concrete and asphalt	145714.58N 1021916.70E	THR 740 FT TDZ 748 FT

Slope of RWY-SWY	SWY dimensions (M)	CWY dimensions (M)	Strip dimensions (M)	OFZ	Remarks
7	8	9	10	11	12
-0.4%	60x60	NIL	2340x300	NIL	NIL
+0.4%	60x60	NIL	2340x300	NIL	NIL

VTUQ AD 2.13 DECLARED DISTANCES

RWY Designator	TORA (M)	TODA (M)	ASDA (M)	LDA (M)	Remarks
1	2	3	4	5	6
06	2100	2100	2160	2100	NIL
24	2100	2100	2160	2100	NIL

VTUQ AD 2.14 APPROACH AND RUNWAY LIGHTING

RWY Designator	APCH LGT type LEN INTST	THR LGT colour WBAR	VASIS (MEHT) PAPI	TDZ, LGT LEN	RWY Centre Line LGT Length, spacing, colour, INTST	RWY edge LGT LEN, spacing, colour INTST	RWY End LGT colour WBAR	SWY LGT LEN (M) colour	Remarks
1	2	3	4	5	6	7	8	9	10
06	SALS 420 M	Green	PAPI Both 3°	NIL	NIL	2100 M 60 M White, LIH	Red	NIL	NIL
24	NIL	Green	PAPI Both 3°	NIL	NIL	2100 M 60 M White, LIH	Red	NIL	NIL

VTUQ AD 2.15 OTHER LIGHTING, SECONDARY POWER SUPPLY

1	ABN/IBN location, characteristics and hours of operation	ABN: At Tower Building, FLG WG EV 7 SEC.
2	LDI location and LGT Anemometer location and LGT	NIL
3	TWY edge and centre line lighting	EDGE: All taxiways
4	Secondary power supply/switch-over time	Secondary power supply at tower and air field lighting. (AFL)
5	Remarks	NIL

VTUQ AD 2.16 HELICOPTER LANDING AREA

1	Coordinates TLOF or THR of FATO Geoid undulation	NIL
2	TLOF and/or FATO elevation M/FT	NIL
3	TLOF and FATO area dimensions, surface, strength, marking	NIL
4	True and MAG BRG of FATO	NIL
5	Declared distance available	NIL
6	APP and FATO lighting	NIL
7	Remarks	NIL

VTUQ AD 2.17 ATS AIRSPACE

1	Designation and lateral limits	Beginning at 1501.2N 10222.1E then clockwise along 5 NM arc from Ratchasima DVOR/DME (145647.66N 1021840.35E) to 1454.5N 10214.6E then counter clockwise from Khorat Aerodrome Traffic Zone to 1457.1N 10214.4E then direct to the starting point.
2	Vertical limits	2000 FT/AGL
3	Airspace classification	C
4	ATS unit call sign Language(s)	Ratchasima Tower English, Thai
5	Transition altitude	11000 FT
6	Remarks	NIL

VTUQ AD 2.18 ATS COMMUNICATION FACILITIES

Service designation	Call sign	Frequency	Hours of operation	Remarks
1	2	3	4	5
APP	Ratchasima Approach	123.6 MHZ	23:00-11:00	NIL
TWR	Ratchasima Tower	119.8 MHZ 236.6 MHZ	23:00-11:00	
ATIS		399 KHZ	23:00-11:00	

VTUQ AD 2.19 RADIO NAVIGATION AND LANDING AIDS

Type of aid, MAG VAR CAT of ILS/MLS (For VOR/ILS/MLS, give declination)	ID	Frequency	Hours of operation	Position of transmitting antenna coordinates	Elevation of DME transmitting antenna	Remarks
1	2	3	4	5	6	7
NDB	KR	399 KHZ	H24	145723.28N 1021852.93E		
DVOR/DME	NKR	110.2 MHZ CH39X	H24	145647.66N 1021840.35E		
LOC RWY 06 ILS CAT I	INKR	109.7 MHZ	H24	145719.26N 1021925.51E		LOC: Designated operation coverage 18 NM, ALT 7000 FT AMSL
GP		333.2 MHZ	H24	145643.23N 1021826.07E		GP: 3 DEG, RDH 54 FT
DME	INKR	CH34X (109.7 MHZ)	H24	145717.24N 1021926.61E	732 FT	DME: Paired with LOC Freq.

VTUQ AD 2.20 LOCAL AERODROME REGULATIONS

1. VFR REPORTING POINTS AND LOCAL PROCEDURES

1.1 Reporting points for VFR flight In order to expedite and maintain an orderly flow of air traffic into Nakhon Ratchasima Airport, the procedures of the inbound traffic of VFR flight, conventional and prop-jet aircraft be set up as follow:

- a) Aircraft entering to land from northeast of Nakhon Ratchasima Airport shall report over Ban Huai Hin, designated as LIMA (1453.0N 10236.4E) which is approximately 16.5 NM at 4 000 FT on R-102 of NKR DVOR/DME and Ban Nong Sano, designated as KILO (1453.0N 10223.0E) which is approximately 5.5 NM at 3 000 FT on R-133 on NKR DVOR/DME respectively, when reaching KILO the aircraft will be instructed by Khorat approach to join aerodrome traffic pattern accordingly.
- b) Aircraft entering to land from southeast of Nakhon Ratchasima Airport, shall report over Pak Thong Chai district, designated as PAPA (1443.0N 10201.7E) which is approximately 22 NM at 4 000 FT on R-232 of NKR DVOR/DME and Ban Nong Sano,

designated as KILO which is approximately 5.5 NM at 3 000 FT on R-133 of NKR DVOR/DME respectively, when reaching KILO the aircraft will be instructed by Khorat approach to join aerodrome traffic pattern accordingly.

1.2 Aerodrome traffic circuit

- a) Using RWY 24 by entering left traffic circuit only.
- b) Using RWY 06 by entering right traffic circuit only.

2. NAKHON RATCHASIMA CORRIDOR (NTC)

In order to facilitate all aircraft to/from Nakhon Ratchasima Airport Temporary Transition Corridor is established within Khorat Control Zone as follow:

Nakhon Ratchasima Transition Corridor (NTC) an area bounded by a line joining the following points: 143746.50N 1013621.56E to 144624.59N 1014902.48E to 145944.02N 1021819.43E to 150243.62N 1024312.81E then along a 35 NM arc clockwise from 'KRT' VOR/DME (1455.0N 10208.4E) to 145644.78N 1024358.14E to 145345.19N 1021905.45E to 144128.44N 1015235.14E to 143250.36N 1013954.53E then along a 35 NM arc clockwise from 'KRT' VOR/DME (145502.35N 1020823.32E) to the starting point.

Vertical Limit : 2000 FT / 11000 FT

Period of Activity : To be notified by ATC

Type of Airspace : Temporary Airspace delegated turning point Nakhon Ratchasima Approach

Class of Airspace : C

Controlling Unit : Nakhon Ratchasima Approach

Frequency : 123.6 MHZ

Remark : NTC may be activated during low traffic period within Khorat Control Zone, Nakhon Ratchasima Approach shall accordingly maintain close co-ordination with Khorat Approach for intended activities within NTC.

VTUQ AD 2.21 NOISE ABATEMENT PROCEDURES

NIL

VTUQ AD 2.22 FLIGHT PROCEDURES

NIL

VTUQ AD 2.23 ADDITIONAL INFORMATION

NIL

VTUQ AD 2.24 CHARTS RELATED TO AN AERODROME

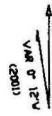
Chart name	Page
Aerodrome Chart - ICAO	AD 2-VTUQ-2-1
Standard Departure Chart - Instrument (SID) - ICAO - RNAV RWY 06 - SAMBY1A SITTA1A VOBOT1A	AD 2-VTUQ-6-1
Standard Departure Chart - Instrument (SID) - ICAO - RNAV RWY 06 - SAMBY1A SITTA1A VOBOT1A (Tabular description)	AD 2-VTUQ-6-3
Standard Departure Chart - Instrument (SID) - ICAO - RNAV RWY 24 - BLUVY1B SAMBY1B SITTA1B VOBOT1B	AD 2-VTUQ-6-5
Standard Departure Chart - Instrument (SID) - ICAO - RNAV RWY 24 - BLUVY1B SAMBY1B SITTA1B VOBOT1B (Tabular description)	AD 2-VTUQ-6-7
Standard Departure Chart - Instrument (SID) - ICAO - RNAV RWY 24 - BLUVY1B SAMBY1B SITTA1B VOBOT1B (Waypoint list table)	AD 2-VTUQ-6-9
Instrument Approach Chart - ICAO - VOR/DME RWY 06	AD 2-VTUQ-8-1
Instrument Approach Chart - ICAO - VOR/DME RWY 24	AD 2-VTUQ-8-3
Instrument Approach Chart - ICAO - ILS/DME RWY 06	AD 2-VTUQ-8-5
Instrument Approach Chart - ICAO - LLZ/DME RWY 06	AD 2-VTUQ-8-7
Instrument Approach Chart - ICAO - RNAV (GNSS) RWY 06	AD 2-VTUQ-8-9
Instrument Approach Chart - ICAO - RNAV (GNSS) RWY 06 (Tabular description)	AD 2-VTUQ-8-10
Instrument Approach Chart - ICAO - RNAV (GNSS) RWY 24	AD 2-VTUQ-8-11
Instrument Approach Chart - ICAO - RNAV (GNSS) RWY 24 (Tabular description)	AD 2-VTUQ-8-12

AERODROME CHART-ICAO 14° 56' 58" N ELEV 765 ft
102° 18' 46" E 233 m

TWR 119.8
236.6

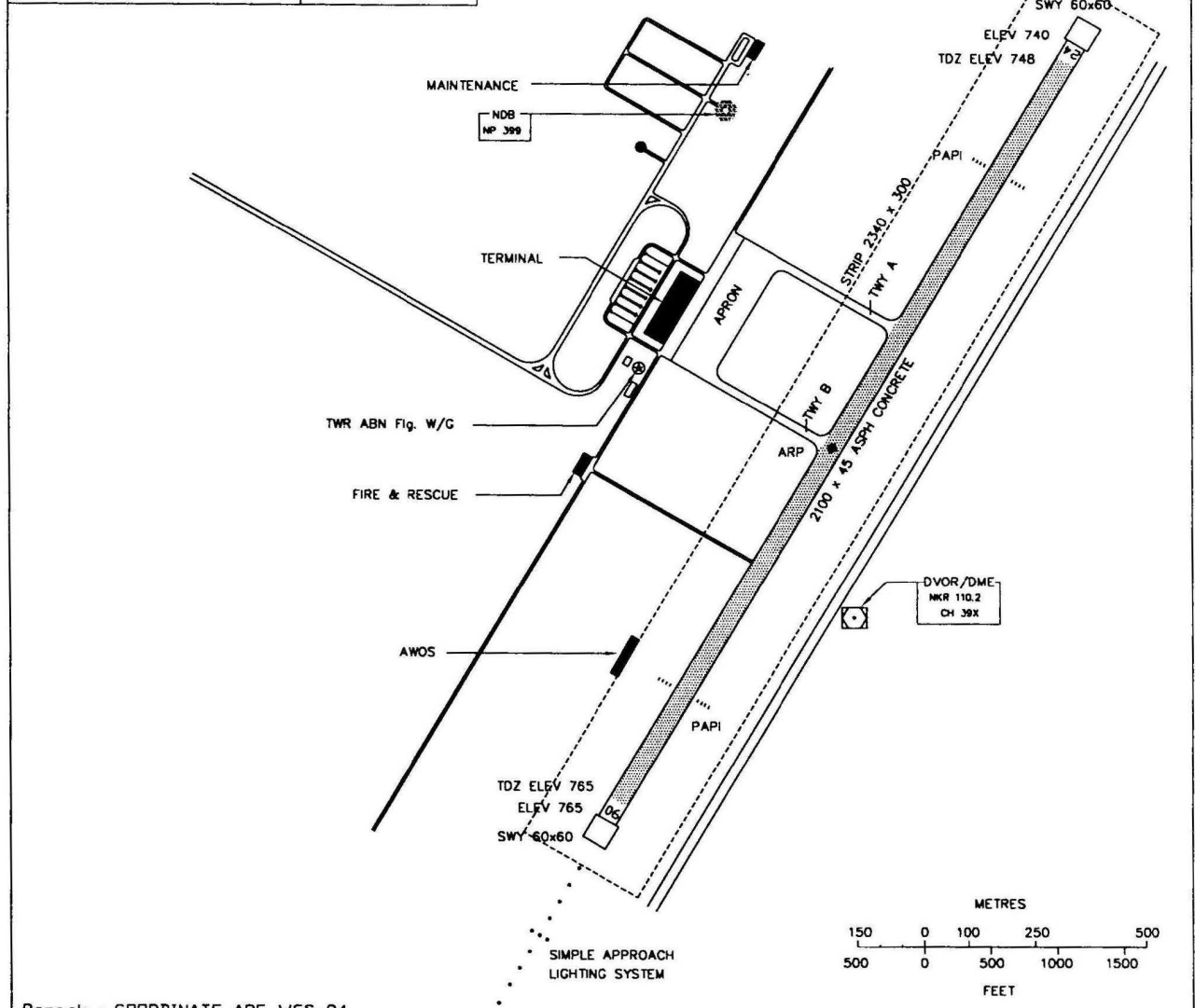
NAKHON RATCHASIMA / Nakhon Ratchasima

RWY	DIRECTION	THR	BEARING STRENGTH
06	62°	14° 56' 42" N	PCN 42/F/C/X/T
		102° 18' 15" E	
24	242°	14° 57' 15" N	PCN 45/R/C/X/T
		102° 19' 17" E	
APRON			PCN 45/R/C/X/T



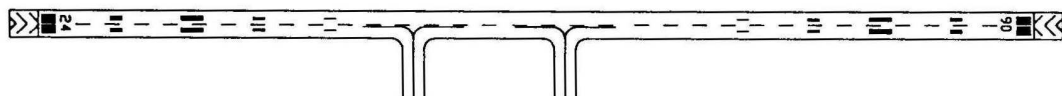
ELEVATIONS IN FEET AND DIMENSIONS IN METRES
BEARINGS ARE MAGNETIC

ANNUAL RATE OF CHANGE 3"E

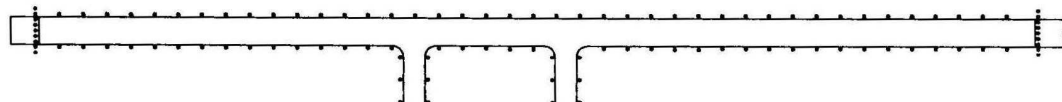


Remark : COORDINATE ARE WGS-84

MARKING AIDS RWY 06/24 AND EXIT TWY



LIGHTING AIDS RWY 06/24 AND EXIT TWY



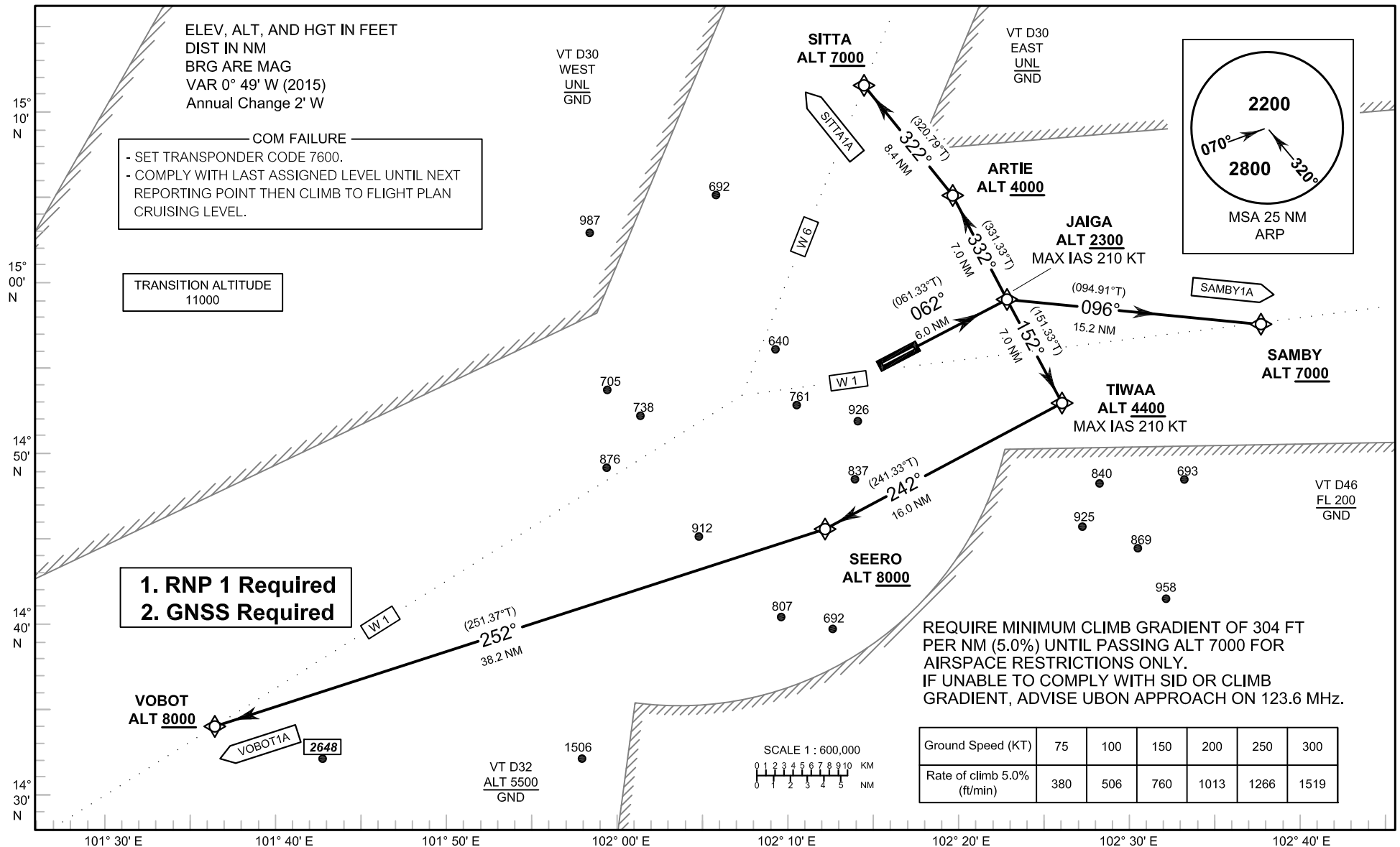
INTENTIONALLY BLANK

**STANDARD DEPARTURE CHART -
INSTRUMENT (SID) - ICAO**

APP : 123.6
TWR : 119.8, 236.6

**NAKHON RATCHASIMA/
Nakhon Ratchasima (VTUQ)
RNAV RWY06**

SAMBY1A SITTA1A VOBOT1A



INTENTIONALLY BLANK

STANDARD DEPARTURE CHART-
INSTRUMENT (SID) - ICAO

NAKHON RATCHASIMA/ Nakhon Ratchasima (VTUQ)

RNAV RWY06

SAMBY1A

SITTA1A VOBOT1A

TABULAR DESCRIPTION

RNAV RWY06											
Serial Number	Path Descriptor	Waypoint Identifier	Flyover	Course ° M (° T)	Magnetic Variation	Distance (NM)	Turn Direction	Altitude (FT)	Speed (KT)	VPA/ TCH	Navigation Specification
010	-	DER RWY 06	-	-	+0.8	-	-	-	-	-	RNP 1
020	CF	JAIGA	-	062°(061.33°)	+0.8	6.0	R	+2300	-210	-	RNP 1
030	TF	TIWAA	-	152°(151.33°)	+0.8	7.0	R	+4400	-210	-	RNP 1
040	TF	SEERO	-	242°(241.33°)	+0.8	16.0	R	+8000	-	-	RNP 1
050	TF	VOBOT	-	252°(251.37°)	+0.8	38.2	-	+8000	-	-	RNP 1
010	-	DER RWY 06	-	-	+0.8	-	-	-	-	-	RNP 1
020	CF	JAIGA	-	062°(061.33°)	+0.8	6.0	R	+2300	-210	-	RNP 1
030	TF	SAMBY	-	096°(094.91°)	+0.8	15.2	-	+7000	-	-	RNP 1
010	-	DER RWY 06	-	-	+0.8	-	-	-	-	-	RNP 1
020	CF	JAIGA	-	062°(061.33°)	+0.8	6.0	L	+2300	-210	-	RNP 1
030	TF	ARTIE	-	332°(331.33°)	+0.8	7.0	L	+4000	-	-	RNP 1
040	TF	SITTA	-	322°(320.79°)	+0.8	8.4	-	+7000	-	-	RNP 1

WAYPOINT LIST

RNAV RWY06		
Waypoint Identifier	Coordinates	
DER RWY 06	14 57 14.58 N	102 19 16.70 E
JAIGA	15 00 07.96 N	102 24 43.06 E
TIWAA	14 53 57.84 N	102 28 11.13 E
SEERO	14 46 14.87 N	102 13 41.78 E
VOBOT	14 33 56.57 N	101 36 21.77 E
SAMBY	14 58 49.02 N	102 40 22.21 E
ARTIE	15 06 18.01 N	102 21 14.78 E
SITTA	15 12 50.38 N	102 15 45.08 E

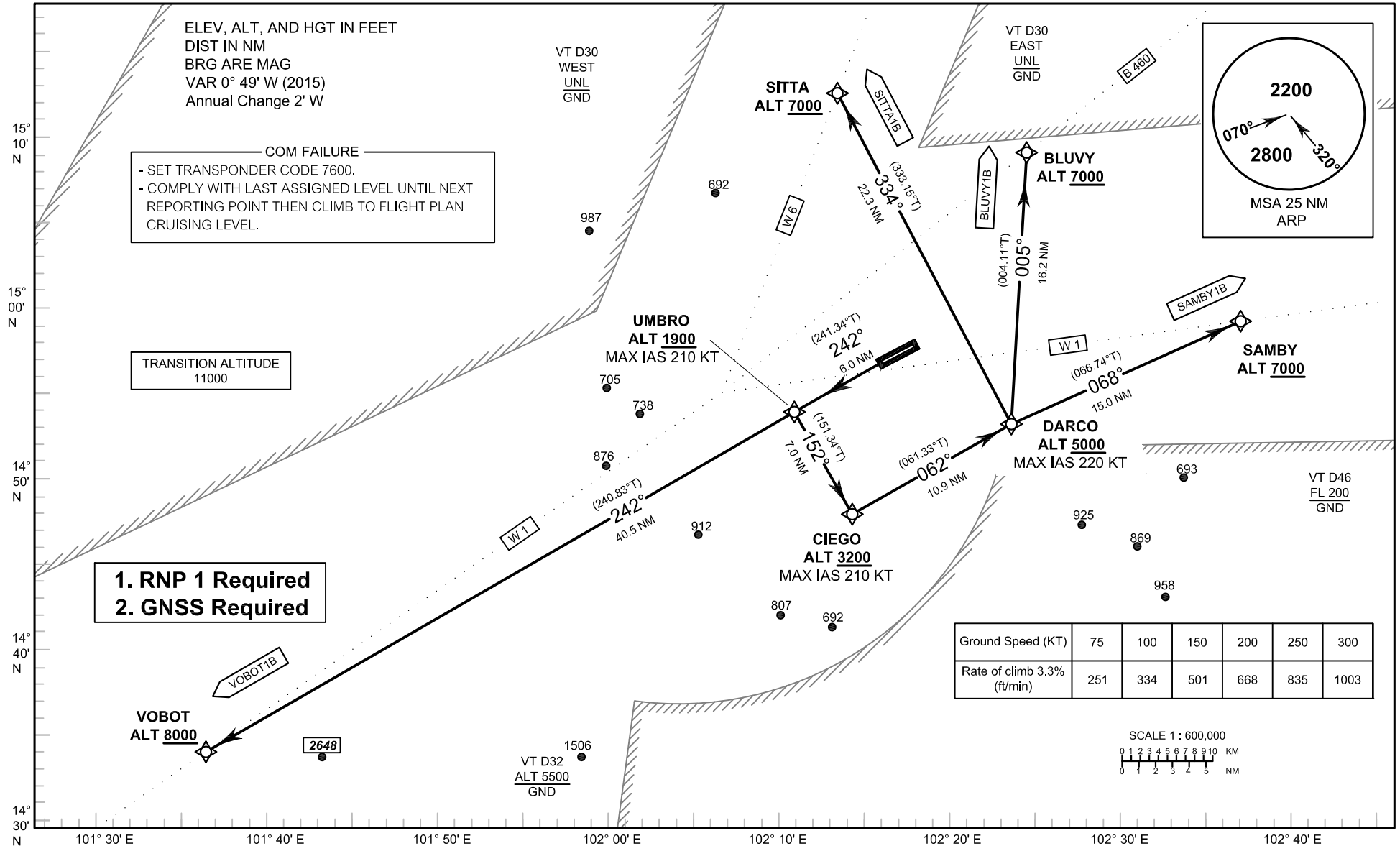
INTENTIONALLY BLANK

**STANDARD DEPARTURE CHART -
INSTRUMENT (SID) - ICAO**

APP : 123.6
TWR : 119.8, 236.6

**NAKHON RATCHASIMA/
Nakhon Ratchasima (VTUQ)
RNAV RWY24**

**BLUVY1B SAMBY1B
SITTA1B VOBOT1B**



INTENTIONALLY BLANK

STANDARD DEPARTURE CHART-
INSTRUMENT (SID) - ICAO

NAKHON RATCHASIMA/ Nakhon Ratchasima (VTUQ)

RNAV RWY24

BLUVY1B SAMBY1B

SITTA1B VOBOT1B

TABULAR DESCRIPTION

RNAV RWY24											
Serial Number	Path Descriptor	Waypoint Identifier	Flyover	Course ° M (° T)	Magnetic Variation	Distance (NM)	Turn Direction	Altitude (FT)	Speed (KT)	VPA/ TCH	Navigation Specification
010	-	DER RWY 24	-	-	+0.8	-	-	-	-	-	RNP 1
020	CF	UMBRO	-	242°(241.34°)	+0.8	6.0	L	+1900	- 210	-	RNP 1
030	TF	CIEGO	-	152°(151.34°)	+0.8	7.0	L	+3200	- 210	-	RNP 1
040	TF	DARCO	-	062°(061.33°)	+0.8	10.9	L	+5000	- 220	-	RNP 1
050	TF	SITTA	-	334°(333.15°)	+0.8	22.3	-	+7000	-	-	RNP 1
010	-	DER RWY 24	-	-	+0.8	-	-	-	-	-	RNP 1
020	CF	UMBRO	-	242°(241.34°)	+0.8	6.0	L	+1900	- 210	-	RNP 1
030	TF	CIEGO	-	152°(151.34°)	+0.8	7.0	L	+3200	- 210	-	RNP 1
040	TF	DARCO	-	062°(061.33°)	+0.8	10.9	R	+5000	- 220	-	RNP 1
050	TF	SAMBY	-	068°(066.74°)	+0.8	15.0	-	+7000	-	-	RNP 1
010	-	DER RWY 24	-	-	+0.8	-	-	-	-	-	RNP 1
020	CF	UMBRO	-	242°(241.34°)	+0.8	6.0	L	+1900	- 210	-	RNP 1
030	TF	CIEGO	-	152°(151.34°)	+0.8	7.0	L	+3200	- 210	-	RNP 1
040	TF	DARCO	-	062°(061.33°)	+0.8	10.9	L	+5000	- 220	-	RNP 1
050	TF	BLUVY	-	005°(004.11°)	+0.8	16.2	-	+7000	-	-	RNP 1
010	-	DER RWY 24	-	-	+0.8	-	-	-	-	-	RNP 1
020	CF	UMBRO	-	242°(241.34°)	+0.8	6.0	-	+1900	- 210	-	RNP 1
030	TF	VOBOT	-	242°(240.83°)	+0.8	40.5	-	+8000	-	-	RNP 1

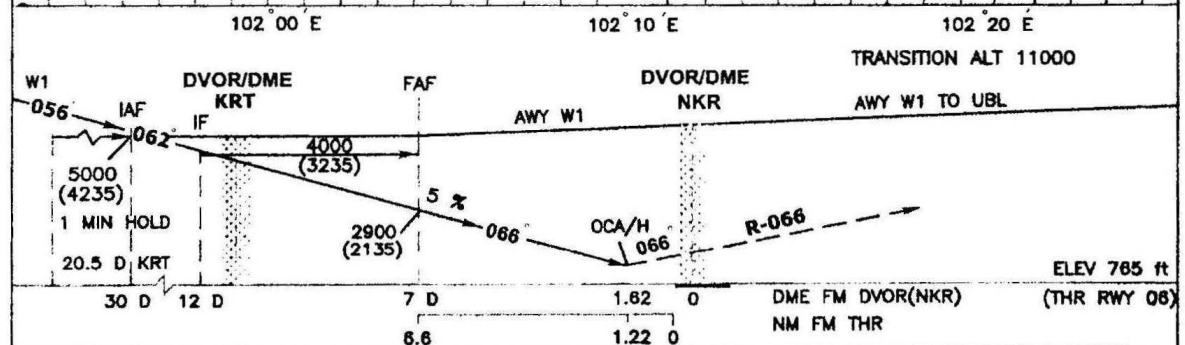
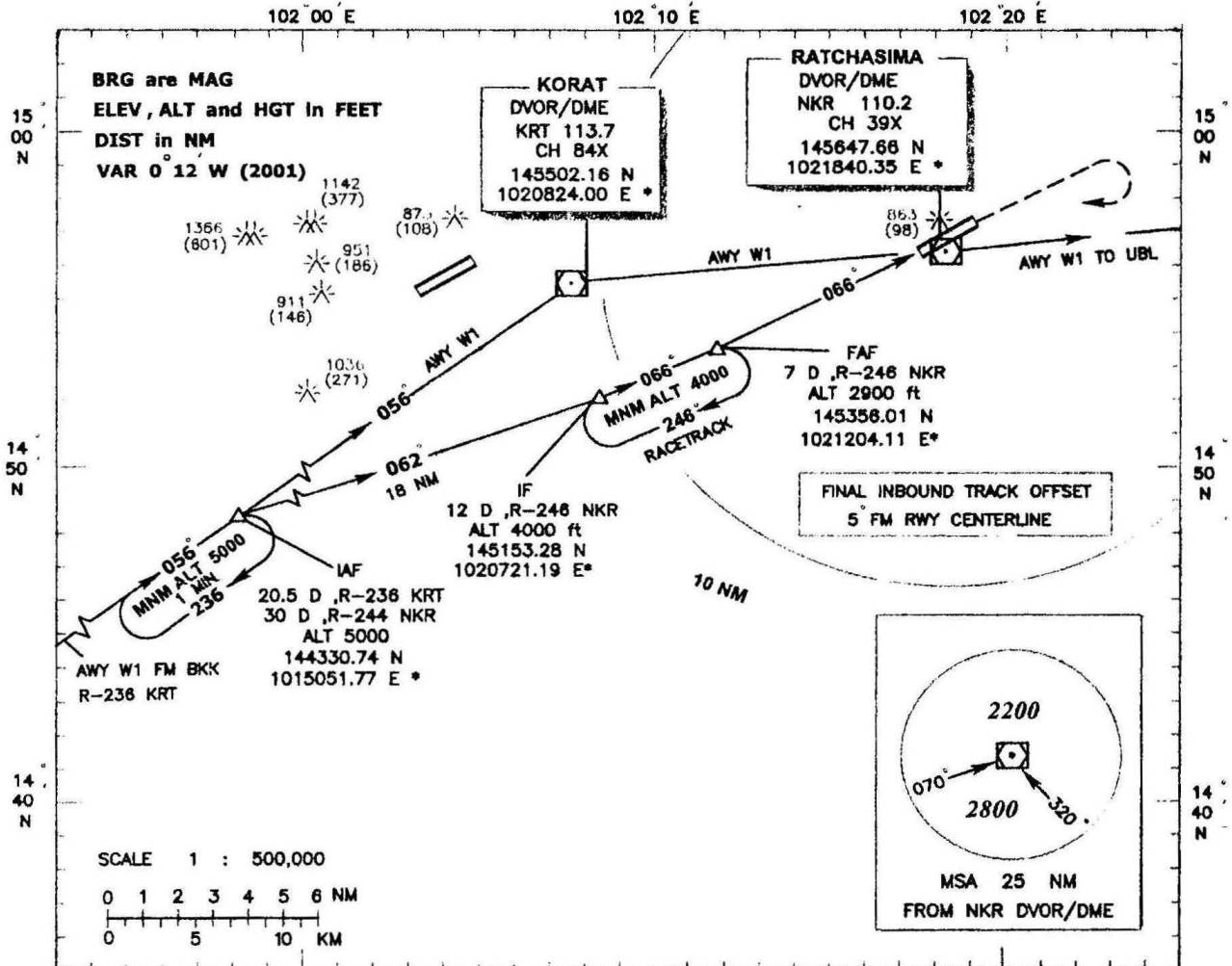
INTENTIONALLY BLANK

WAYPOINT LIST

RNAV RWY24		
Waypoint Identifier	Coordinates	
DER RWY 24	14 56 41.79 N	102 18 15.01 E
UMBRO	14 53 48.31 N	102 12 48.80 E
CIEGO	14 47 38.17 N	102 16 16.72 E
DARCO	14 52 53.07 N	102 26 09.33 E
SITTA	15 12 50.38 N	102 15 45.08 E
SAMBY	14 58 49.02 N	102 40 22.21 E
BLUVY	15 09 06.93 N	102 27 21.37 E
VOBOT	14 33 56.57 N	101 36 21.77 E

INTENTIONALLY BLANK

INSTRUMENT AERODROME ELEV 765 ft **NAKHON RATCHASIMA / Ratchasima**
APPROACH HEIGHTS RELATED TO APP : 123.6
CHART - ICAO AERODROME ELEV TWR : 119.8 ,238.6 **VOR/DME**
RWY 06



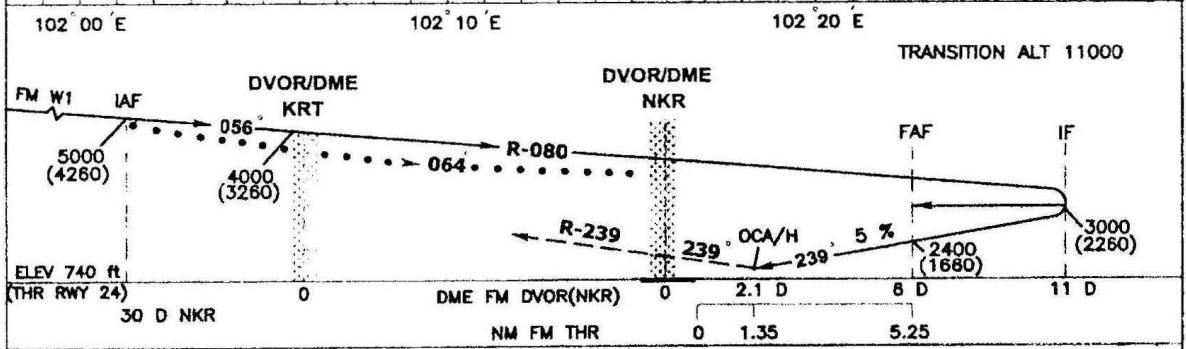
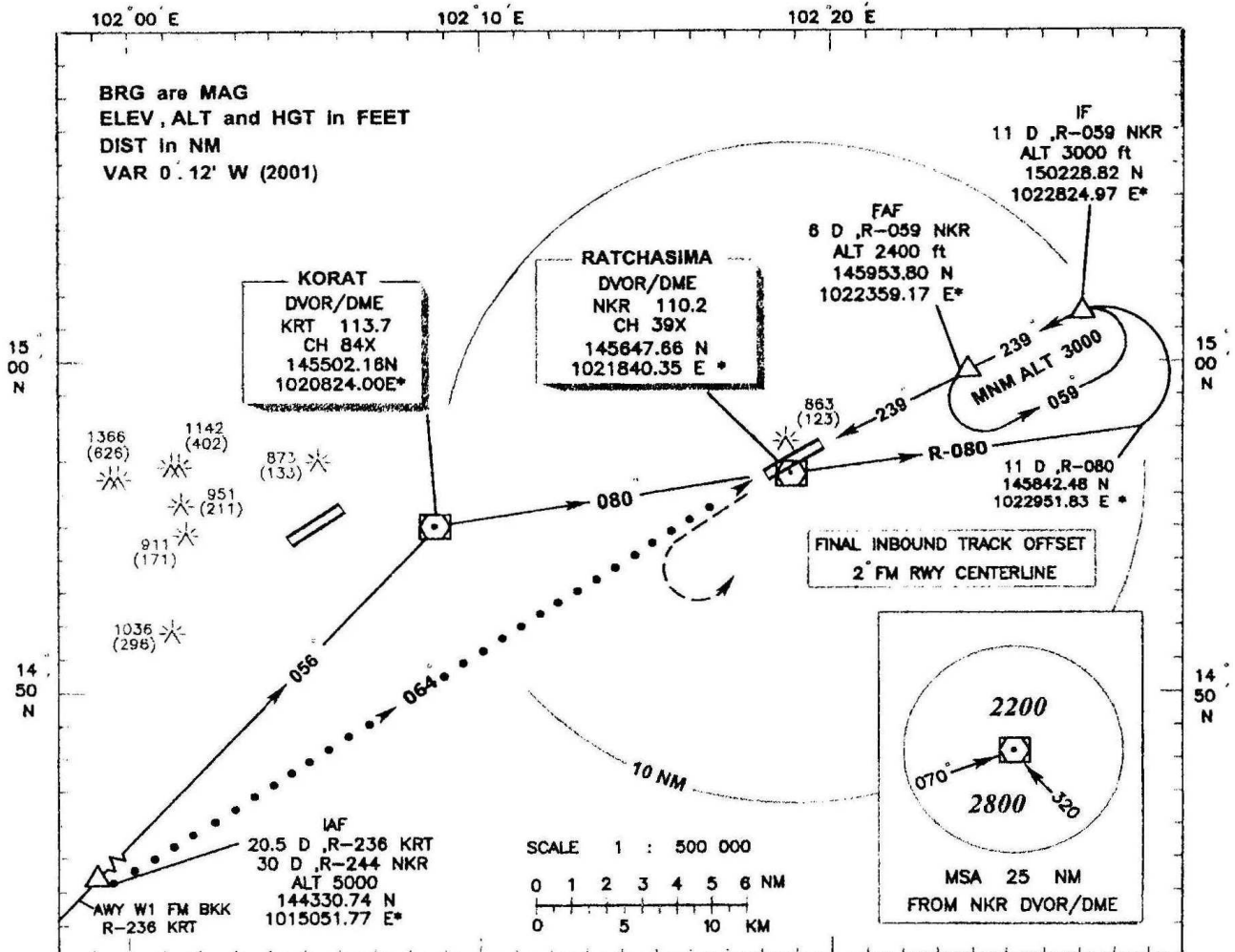
MISSED APPROACH : Climb on track 066° to the DVOR/DME then climb on R-066 to 2000(1235)ft, then turn right continuing climb back to FAF 4000(3235) ft and hold.

Remark : Circling to the right only

		Distance	2 D	3 D	4 D	5 D	6 D					
OCA/H	A	B	C	D	1320 (555)	1635 (870)	1950 (1185)	2285 (1500)	2580 (1815)			
	Straight-in approach				1200(435)	Gas(kt)	knot	100	120	140	160	180
Circling		1400(835)	1500(735)	Rate of descent	(ft/min)	525	630	740	845	950	1055	

INTENTIONALLY BLANK

INSTRUMENT AERODROME ELEV 765 ft **NAKHON RATCHASIMA / Ratchasima**
APPROACH HEIGHTS RELATED TO APP : 123.6
CHART - ICAO THR RWY 24 ELEV 740 ft TWR : 119.8 ,236.8
VOR/DME RWY 24



MISSED APPROACH: Climb on track 239° to the DVOR/DME then climb on R-239 to 2000(1260) ft, then turn left continuing climb back to FAF 3000(2260) ft and hold.

Remark : Circling to the left only

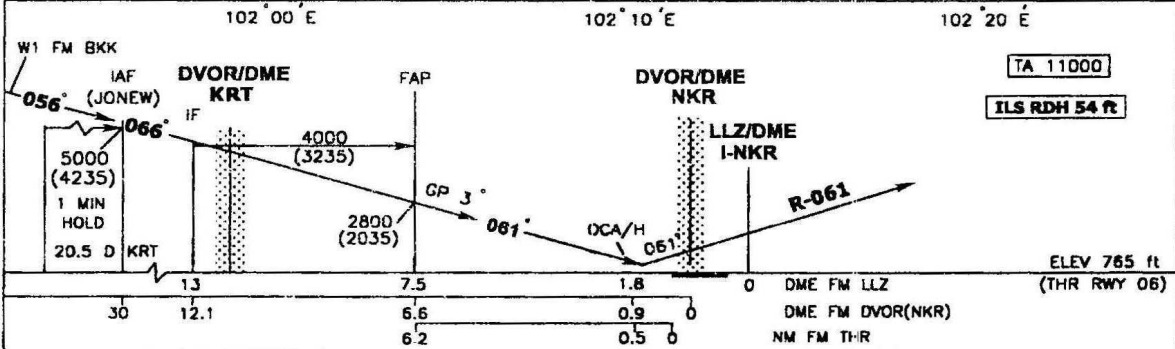
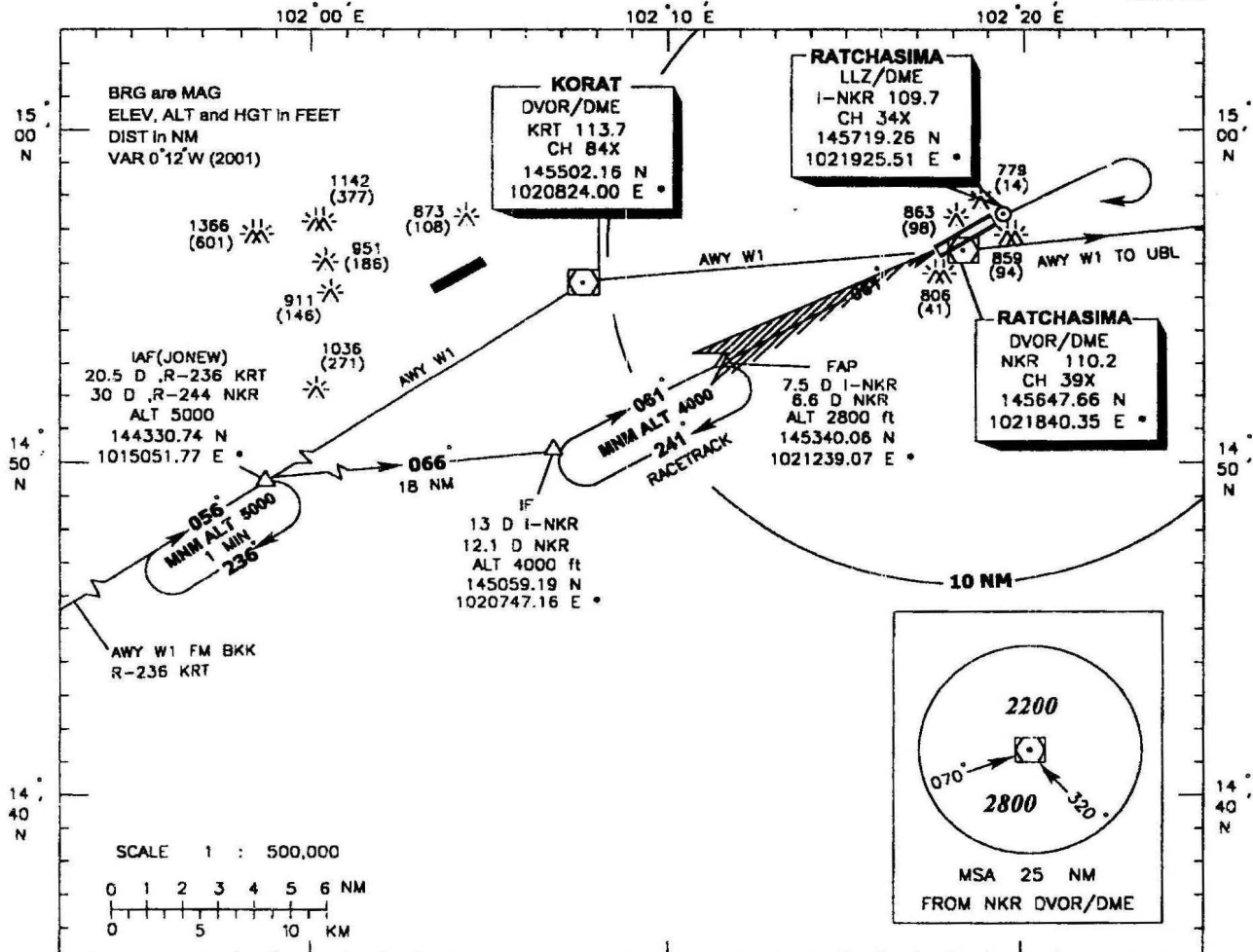
OCA/H	Distance				Gs	knot	Rate of descent (ft/min)	2 D	3 D	4 D	5 D
	A	B	C	D				1175 (435)	1480 (740)	1780 (1040)	2080 (1340)
Straight-in approach	1200(460)				100	120	140	160	180	200	
Circling	1400(680)		1500(780)		505	610	710	810	910	1015	

INTENTIONALLY BLANK

INSTRUMENT AERODROME ELEV 765 ft
APPROACH HEIGHTS RELATED TO
CHART - ICAO AERODROME ELEV

APP : 123.6
 TWR : 119.8 ,236.6

NAKHON / Nakhon
RATCHASIMA / Ratchasima
 ILS/DME
 RWY 06



MISSED APPROACH : Climb on track 061° to the LLZ/DME then climb to intercept R-061 NKR to 2000(1235) ft , then turn right continuing climb back to FAP 4000(3235) ft and hold.

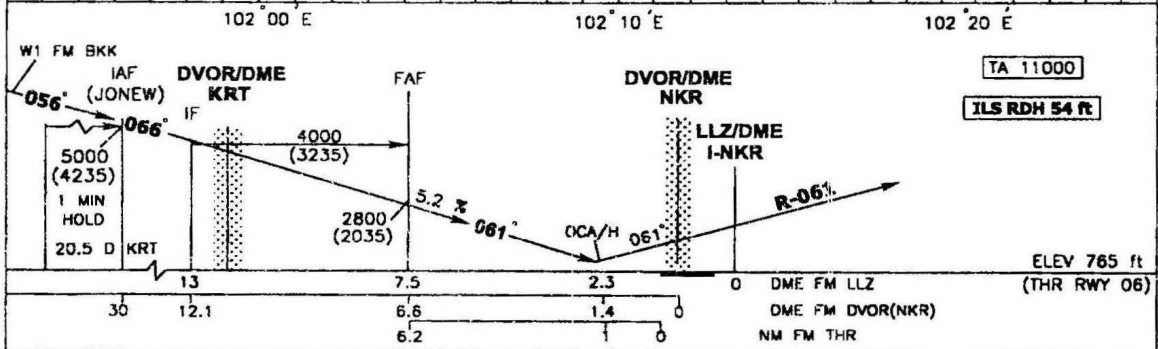
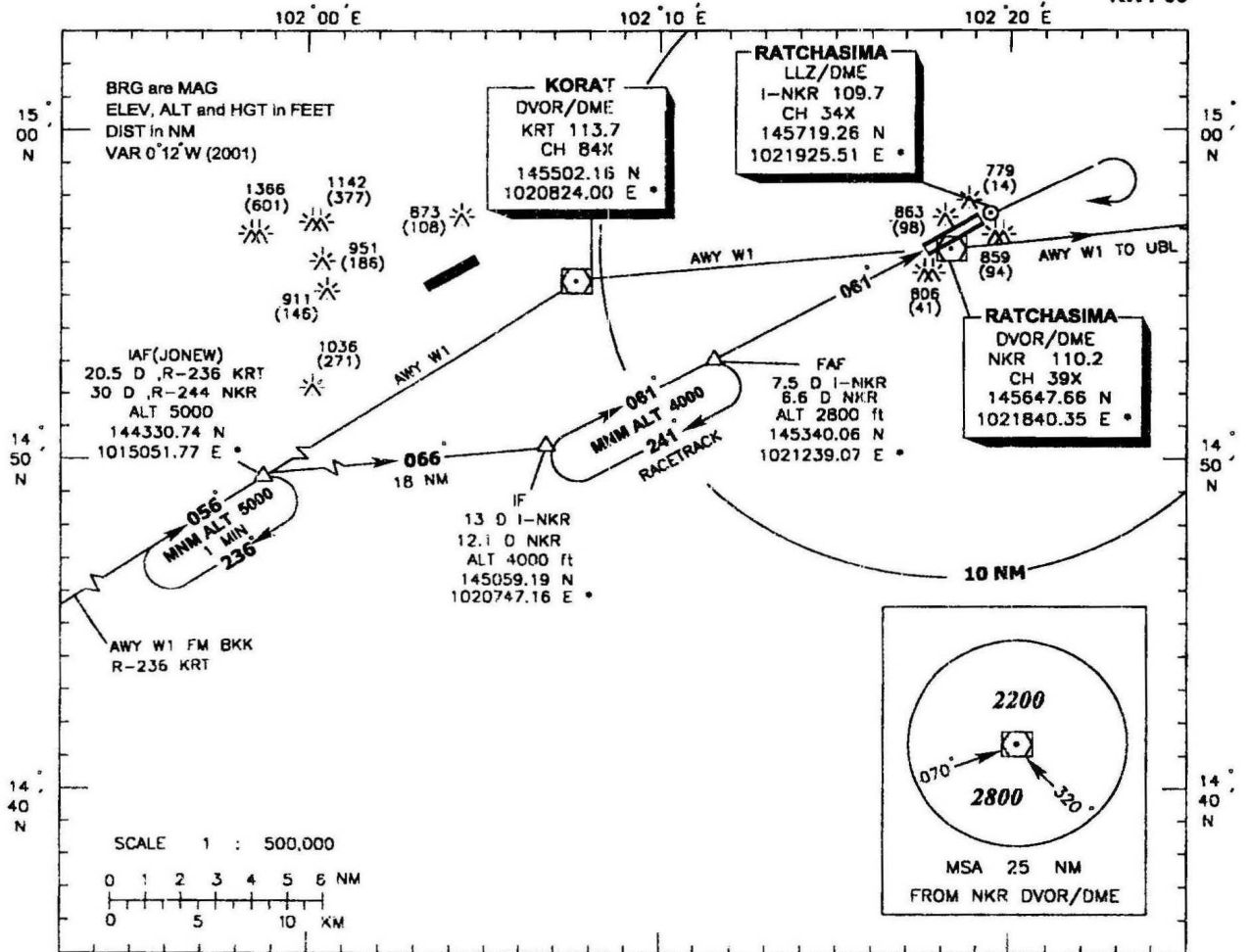
OCA/H		A	B	C	D
Straight-in approach	Cat I	975(210)			
Circling		1400(635)		1500(735)	

INTENTIONALLY BLANK

INSTRUMENT AERODROME ELEV 765 ft
APPROACH HEIGHTS RELATED TO
CHART - ICAO AERODROME ELEV

APP : 123.6
TWR : 119.8 ,236.6

NAKHON / Nakhon
RATCHASIMA / Ratchasima
LLZ/DME
RWY 06



MISSED APPROACH : Climb on track 061° to the LLZ/DME then climb to intercept R-061 NKR to 2000(1235) ft , then turn right continuing climb back to FAF 4000(3235) ft and hold.

Remark : Circling to the right only

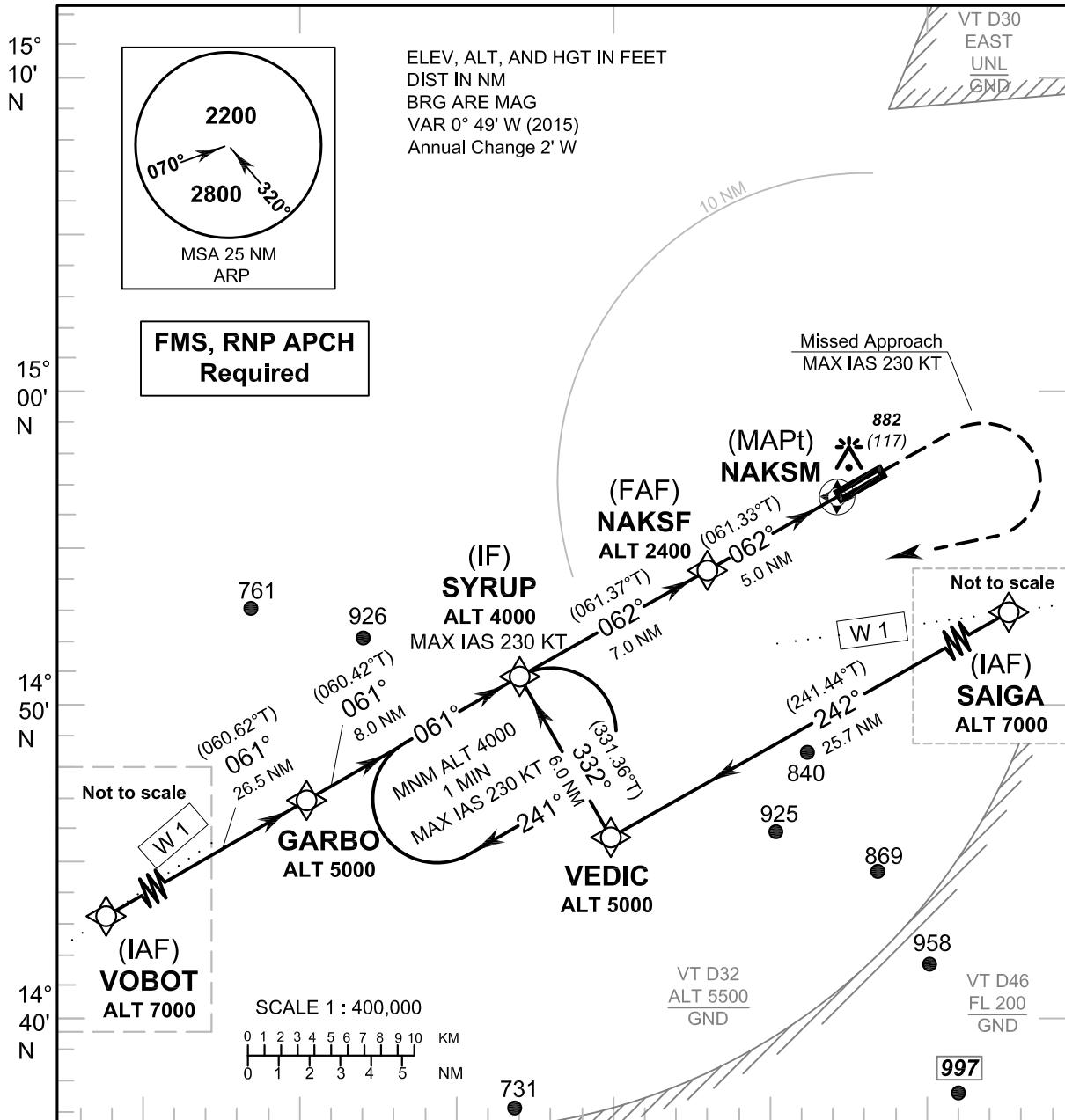
OCA/H	A	B	C	D	Distance									
					2 D	3 D	4 D	5 D	6 D	7 D				
					Altitude(Height)	1040 (275)	1360 (595)	1680 (915)	2000 (1235)	2315 (1550)	2630 (1865)			
Straight-in approach	1145(380)				Gs (kt)	knot	100	120	140	160	180	200		
Circling	1400(635)		1500(735)		Rate of descent (ft/min)	525	630	740	845	950	1055			
					FAF-MAPT 5.2 NM (I-NRK)	3:07	2:36	2:14	1:57	1:44	1:34			

INTENTIONALLY BLANK

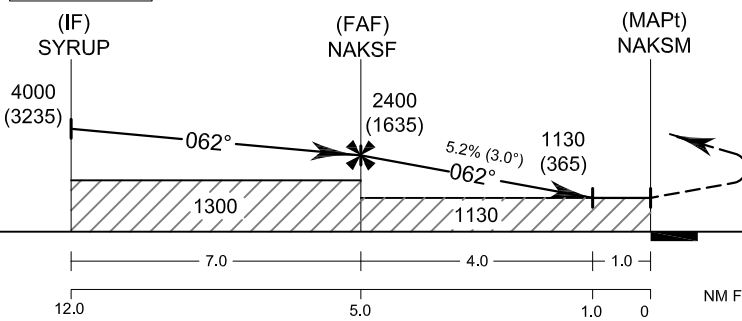
INSTRUMENT AERODROME ELEV 765 FT
APPROACH HEIGHTS RELATED TO
CHART-ICAO AERODROME ELEV

APP : 123.6
TWR : 119.8, 236.6

NAKHON RATCHASIMA/
Nakhon Ratchasima (VTUQ)
RNAV (GNSS) RWY06



TA 11000 102° 00' E 102° 10' E 102° 20' E



Missed Approach :
No turn before MAPt.
Climb on track 062° to 2000 FT,
then turn right direct to **SYRUP**
at 4000 FT and hold or as
directed by ATC.

ELEV 765 FT
(THR RWY 06)

OCA/H	A	B	C	D	NM to THR06	FAF	4 NM	3 NM	2 NM	1.0 NM		
LNAV	1130 (365)				Altitude (Height)	2400 (1635)	2080 (1315)	1760 (995)	1445 (680)	1130 (365)		
					Ground Speed	knot	70	90	100	120	140	160
Circling (OCH AAL)	1300 (535)		1500 (735)		Rate of descent (5.2%)	(ft/min)	369	474	527	632	737	843

INSTRUMENT AERODROME ELEV 765 FT
APPROACH HEIGHTS RELATED TO
CHART - ICAO AERODROME ELEV

NAKHON RATCHASIMA/ Nakhon Ratchasima (VTUQ)
RNAV (GNSS) RWY06

TABULAR DESCRIPTION

RNAV (GNSS) RWY06											
Serial Number	Path Descriptor	Waypoint Identifier	Flyover	Course ° M (° T)	Magnetic Variation	Distance (NM)	Turn Direction	Altitude (FT)	Speed (KT)	VPA/ TCH	Navigation Specification
010	IF	VOBOT (IAF)	-	-	+0.8	-	-	@7000	-	-	RNP APCH
020	TF	GARBO	-	061°(060.62°)	+0.8	26.5	-	@5000	-	-	RNP APCH
030	TF	SYRUP (IF)	-	061°(060.42°)	+0.8	8.0	-	@4000	- 230	-	RNP APCH
010	IF	SAIGA (IAF)	-	-	+0.8	-	-	@7000	-	-	RNP APCH
020	TF	VEDIC	-	242°(241.44°)	+0.8	25.7	R	@5000	-	-	RNP APCH
030	TF	SYRUP (IF)	-	332°(331.36°)	+0.8	6.0	-	@4000	- 230	-	RNP APCH
010	IF	SYRUP (IF)	-	-	+0.8	-	-	@4000	- 230	-	RNP APCH
020	TF	NAKSF (FAF)	-	062°(061.37°)	+0.8	7.0	-	@2400	-	-	RNP APCH
030	TF	NAKSM (MAPt)	Y	062°(061.33°)	+0.8	5.0	-	@1130	-	-	RNP APCH
040	CA	-	-	062°(061.33°)	+0.8	-	-	+2000	-	-	RNP APCH
050	DF	SYRUP (IF)	-	-	+0.8	-	R	+4000	-	-	RNP APCH
060	HM	SYRUP (IF)	Y	061°(060.42°)	+0.8	1 minute	R	+4000	- 230	-	RNP APCH

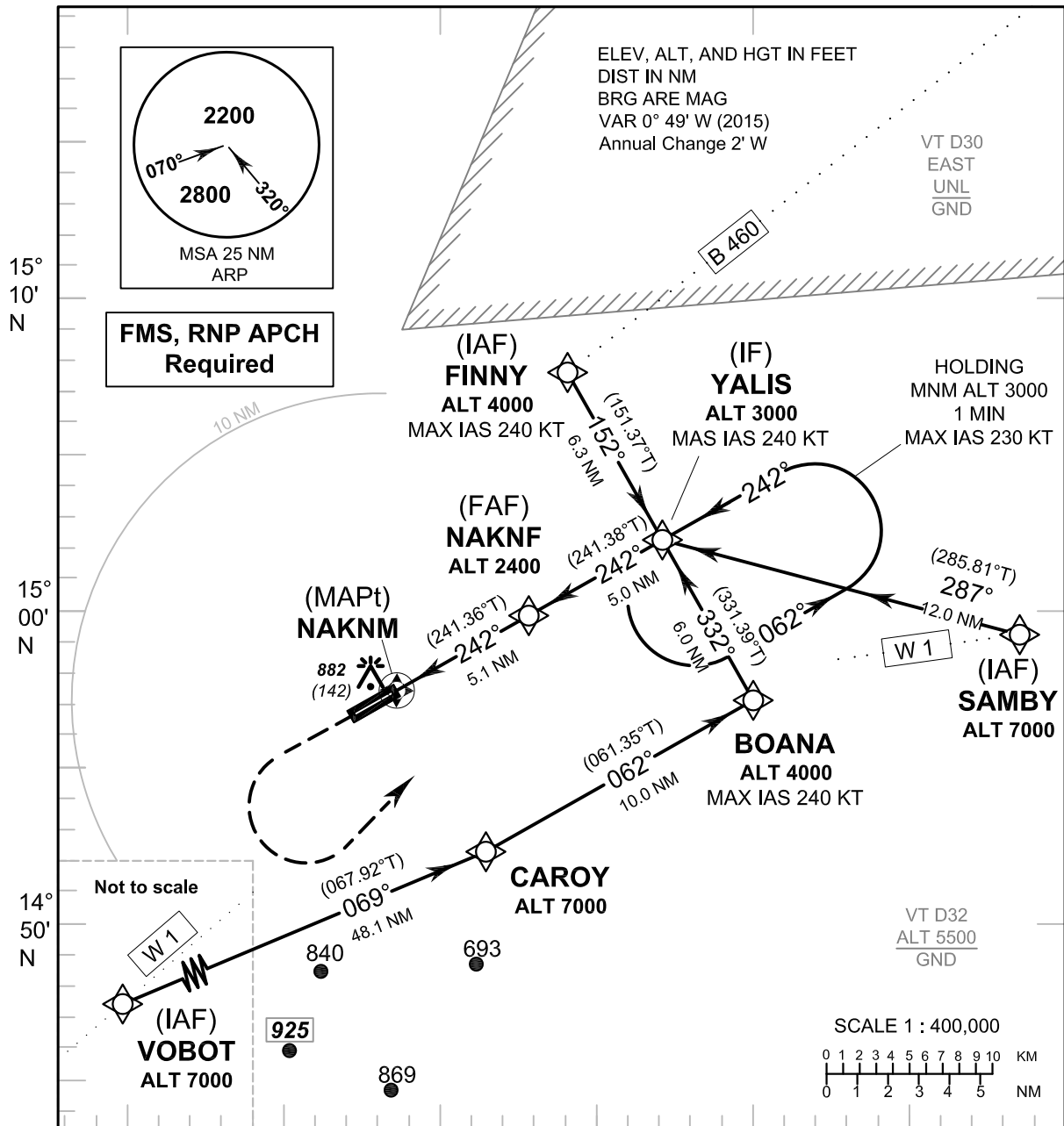
WAYPOINT LIST

RNAV (GNSS) RWY06		
Waypoint Identifier	Coordinates	
VOBOT	14 33 56.57 N	101 36 21.77 E
GARBO	14 46 57.33 N	102 00 11.51 E
SAIGA	14 57 59.51 N	102 33 38.53 E
VEDIC	14 45 37.89 N	102 10 20.60 E
SYRUP	14 50 55.18 N	102 07 22.46 E
NAKSF	14 54 17.23 N	102 13 43.16 E
NAKSM (THR06)	14 56 41.79 N	102 18 15.01 E

INSTRUMENT AERODROME ELEV 765 FT
APPROACH HEIGHTS RELATED TO
CHART-ICAO THR RWY24 - ELEV 740 FT

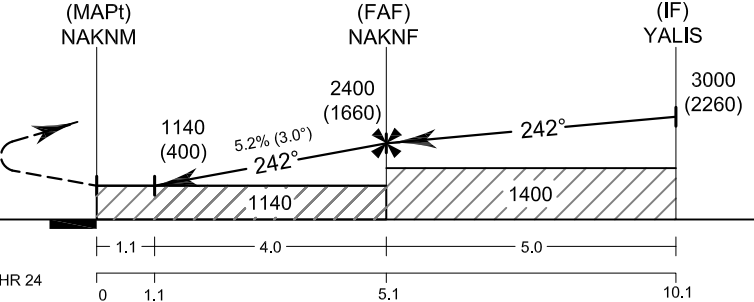
APP : 123.6
TWR : 119.8, 236.6

NAKHON RATCHASIMA/
Nakhon Ratchasima (VTUQ)
RNAV (GNSS) RWY24



102° 10' E 102° 20' E 102° 30' E **TA 11000**

Missed Approach :
No turn before MAPt.
Climb on track 242° to 2000 FT,
then turn left direct to **YALIS**
at 3000 FT and hold or as
directed by ATC.



OCA/H	A	B	C	D	NM to THR24	1.1 NM	2 NM	3 NM	4 NM	5 NM	FAF	
LNAV	1140 (400)				Altitude (Height)	1140 (400)	1420 (680)	1735 (995)	2055 (1315)	2370 (1630)	2400 (1660)	
					Ground Speed	knot	70	90	100	120	140	160
Circling (OCH AAL)	1300 (535)		1500 (735)		Rate of descent (5.2%)	(ft/min)	369	474	527	632	737	843

INSTRUMENT AERODROME ELEV 765 FT
APPROACH HEIGHTS RELATED TO
CHART - ICAO THR RWY24 - ELEV 740 FT

NAKHON RATCHASIMA/ Nakhon Ratchasima (VTUQ)
RNAV (GNSS) RWY24

TABULAR DESCRIPTION

RNAV (GNSS) RWY24											
Serial Number	Path Descriptor	Waypoint Identifier	Flyover	Course ° M (° T)	Magnetic Variation	Distance (NM)	Turn Direction	Altitude (FT)	Speed (KT)	VPA/ TCH	Navigation Specification
010	IF	VOBOT (IAF)	-	-	+0.8	-	-	@7000	-	-	RNP APCH
020	TF	CAROY	-	069°(067.92°)	+0.8	48.1	L	@7000	-	-	RNP APCH
030	TF	BOANA	-	062°(061.35°)	+0.8	10.0	L	@4000	- 240	-	RNP APCH
040	TF	YALIS (IF)	-	332°(331.39°)	+0.8	6.0	-	@3000	- 240	-	RNP APCH
010	IF	FINNY (IAF)	-	-	+0.8	-	-	@4000	- 240	-	RNP APCH
020	TF	YALIS (IF)	-	152°(151.37°)	+0.8	6.3	-	@3000	- 240	-	RNP APCH
010	IF	SAMBY (IAF)	-	-	+0.8	-	-	@7000	-	-	RNP APCH
020	TF	YALIS (IF)	-	287°(285.81°)	+0.8	12.0	-	@3000	- 240	-	RNP APCH
010	IF	YALIS (IF)	-	-	+0.8	-	-	@3000	- 240	-	RNP APCH
020	TF	NAKNF (FAF)	-	242°(241.38°)	+0.8	5.0	-	@2400	-	-	RNP APCH
030	TF	NAKNM (MAPt)	Y	242°(241.36°)	+0.8	5.1	-	@1140	-	-	RNP APCH
040	CA	-	-	242°(241.36°)	+0.8	-	-	+2000	-	-	RNP APCH
050	DF	YALIS (IF)	-	-	+0.8	-	L	+3000	-	-	RNP APCH
060	HM	YALIS (IF)	Y	242°(241.36°)	+0.8	1 minute	L	+3000	- 230	-	RNP APCH

WAYPOINT LIST

RNAV (GNSS) RWY24		
Waypoint Identifier	Coordinates	
VOBOT	14 33 56.57 N	101 36 21.77 E
CAROY	14 52 00.64 N	102 22 20.23 E
BOANA	14 56 48.98 N	102 31 23.39 E
SAMBY	14 58 49.02 N	102 40 22.21 E
FINNY	15 07 36.79 N	102 25 19.66 E
YALIS	15 02 05.92 N	102 28 25.50 E
NAKNF	14 59 41.75 N	102 23 53.77 E
NAKNM (THR24)	14 57 14.58 N	102 19 16.70 E