

VTUI AD 2.1 AERODROME LOCATION INDICATOR AND NAME

VTUI - SAKON NAKHON / SAKON NAKHON AIRPORT

VTUI AD 2.2 AERODROME GEOGRAPHICAL AND ADMINISTRATIVE DATA

1	ARP coordinates and site at AD	171142.51N 1040707.06E
2	Direction and distance from (city)	12 KM N from city
3	Elevation/Reference temperature	529 FT
4	Geoid Undulation at AD ELEV PSN	NIL
5	MAG VAR/Annual change	0.93°W(2016)/0.02°W
6	AD Administration, address, telephone, telefax, telex, AFS	Director of Sakon Nakhon Airport Sakon Nakhon Airport Sakon Nakhon-Nakhon Phanom Road, Thatnaweng, Mueang Sakon Nakhon, Sakon Nakhon 47000 Thailand Tel: +664 272 4044-5 Fax: +664 272 4041 AFS: VTUIYDYX
7	Types of traffic permitted (IFR/VFR)	IFR/VFR
8	Remarks	Operator: Department of Airports

VTUI AD 2.3 OPERATIONAL HOURS

1	Aerodrome Operator	2300-1500
2	Customs and immigration	NIL
3	Health and sanitation	NIL
4	AIS Briefing Office	2300-1500
5	ATS Reporting Office (ARO)	NIL
6	MET Briefing Office	NIL
7	ATS	2300-1500
8	Fuelling	NIL
9	Handling	NIL
10	Security	NIL
11	De-icing	NIL
12	Remarks	NIL

VTUI AD 2.4 HANDLING SERVICES AND FACILITIES

1	Cargo-handling facilities	NIL
2	Fuel/oil types	NIL
3	Fuelling facilities/capacity	NIL
4	De-icing facilities	NIL
5	Hangar space for visiting aircraft	NIL
6	Repair facilities for visiting aircraft	NIL
7	Remarks	NIL

VTUI AD 2.5 PASSENGER FACILITIES

1	Hotels	In the city
2	Restaurants	In the city
3	Transportation	NIL
4	Medical facilities	NIL
5	Bank and Post Office	NIL
6	Tourist Office	NIL
7	Remarks	NIL

VTUI AD 2.6 RESCUE AND FIRE FIGHTING SERVICES

1	AD category for fire fighting	Category 6
2	Rescue equipment	Yes
3	Capability for removal of disabled aircraft	NIL
4	Remarks	NIL

VTUI AD 2.7 SEASONAL AVAILABILITY - CLEARING

1	Types of clearing equipment	NIL
2	Clearance priorities	NIL
3	Remarks	The aerodrome is available all seasons.

VTUI AD 2.8 APRONS, TAXIWAYS AND CHECK LOCATIONS/POSITIONS DATA

1	Apron surface and strength	Apron A (EAST) Surface: Concrete Strength: PCN 47/R/D/X/T Apron A (WEST) Surface: Concrete Strength: PCN 47/R/C/X/T
2	Taxiway width, surface and strength	TWY A, B and C Width: 23 M Surface: Asphalt Strength: PCN 43/F/D/X/T TWY D Width: 23 M Surface: Asphalt Strength: PCN 46/F/C/X/T
3	Altimeter checkpoint location and elevation	NIL
4	VOR checkpoints	NIL
5	INS checkpoints	NIL
6	Remarks	NIL

VTUI AD 2.9 SURFACE MOVEMENT GUIDANCE AND CONTROL SYSTEM AND MARKINGS

1	Use of aircraft stand ID signs, TWY guide lines and visual docking/parking guidance system of aircraft stands	Aircraft parking shall follow marshaller instructions
2	RWY and TWY markings and LGT	RWY and TWY: Marked and lighted
3	Stop bars	NIL

4	Remarks	NIL
---	---------	-----

VTUI AD 2.10 AERODROME OBSTACLES

In approach/TKOF areas			In circling areas and at AD		Remarks
1			2		
RWY/Area affected	Obstacle type Elevation Markings/LGT	Coordinates	Obstacle type Elevation Markings/LGT	Coordinates	
a	b	c	a	b	
NIL	Radio mast HGT 152 M painted red/white LGTD on top.	170924N 1040754E	NIL	NIL	NIL
	Radio mast HGT 120 M painted red/white LGTD on top.	171130N 1040542E	NIL	NIL	
	Radio mast HGT 52 M painted red/white LGTD on top.	17113N 1040717E	NIL	NIL	

VTUI AD 2.11 METEOROLOGICAL INFORMATION PROVIDED

1	Associated MET Office	Aeronautical Meteorological Station-Sakon Nakhon, Upper Northeastern Meteorological Center, Thai Meteorological Department (TMD)
2	Hours of service MET Office outside hours	2200-1500 NIL
3	Office responsible for TAF preparation Periods of validity	Supply TAF from Upper Northeastern Meteorological Center 24 HR
4	Type of landing forecast Interval of issuance	TREND 1 HR
5	Briefing/consultation provided	Personal Consultation Tel: +664 271 6574 ext. 7613
6	Flight documentation Language(s) used	NIL
7	Charts and other information available for briefing or consultation	S, U85, Daily Weather Forecast, satellite and radar images
8	Supplementary equipment available for providing information	Automated Weather Observation System (AWOS) and Weather Radar
9	ATS units provided with information	Sakon Nakhon TWR
10	Additional information (limitation of service, etc.)	NIL

VTUI AD 2.12 RUNWAY PHYSICAL CHARACTERISTICS

Designations RWY NR	TRUE BRG	Dimensions of RWY (M)	Strength (PCN) and surface of RWY and SWY	THR coordinates RWY end coordinates THR geoid undulation	THR elevation and highest elevation of TDZ of precision APP RWY
1	2	3	4	5	6
05	045.50°	2600x45	PCN 43/F/D/X/T Concrete and asphalt	171112.56N 1040635.89E	THR 529 FT TDZ 529 FT
23	225.50°	2600x45	PCN 43/F/D/X/T Concrete and asphalt	171212.45N 1040738.22E	THR 526 FT TDZ 526 FT

Slope of RWY-SWY	SWY dimensions (M)	CWY dimensions (M)	Strip dimensions (M)	OFZ	Remarks
7	8	9	10	11	12
0.0385%	60x45	NIL	2840x300	NIL	NIL
0.0385%	60x45	NIL	2840x300	NIL	NIL

VTUI AD 2.13 DECLARED DISTANCES

RWY Designator	TORA (M)	TODA (M)	ASDA (M)	LDA (M)	Remarks
1	2	3	4	5	6
05	2600	2600	2750	2600	NIL
23	2600	2600	2750	2600	NIL

VTUI AD 2.14 APPROACH AND RUNWAY LIGHTING

RWY Designator	APCH LGT type LEN INTST	THR LGT colour WBAR	VASIS (MEHT) PAPI	TDZ, LGT LEN	RWY Centre Line LGT Length, spacing, colour, INTST	RWY edge LGT LEN, spacing, colour INTST	RWY End LGT colour WBAR	SWY LGT LEN (M) colour	Remarks
1	2	3	4	5	6	7	8	9	10
05	RTIL	Green	PAPI LEFT 3° (15.72 M)	NIL	NIL	2600 M 60 M White, LIH	Red	Red	NIL
23	SALS 420 M	Green	PAPI LEFT 3° (15.72 M)	NIL	NIL	2600 M 60 M White, LIH	Red	Red	NIL

VTUI AD 2.15 OTHER LIGHTING, SECONDARY POWER SUPPLY

1	ABN/IBN location, characteristics and hours of operation	ABN: At Tower Building, FLG W G EV 7 SEC.
2	LDI location and LGT Anemometer location and LGT	NIL
3	TWY edge and centre line lighting	Edge: ALL TWY
4	Secondary power supply/switch-over time	Secondary power supply to all lighting at the airport. Switch over time: 15 SEC.
5	Remarks	NIL

VTUI AD 2.16 HELICOPTER LANDING AREA

1	Coordinates TLOF or THR of FATO Geoid undulation	NIL
2	TLOF and/or FATO elevation M/FT	NIL
3	TLOF and FATO area dimensions, surface, strength, marking	NIL
4	True and MAG BRG of FATO	NIL
5	Declared distance available	NIL
6	APP and FATO lighting	NIL
7	Remarks	NIL

VTUI AD 2.17 ATS AIRSPACE

1	Designation and lateral limits	A circle of 5 NM radius centred on SKN DVOR/DME (171250.89N 1040812.34E)
2	Vertical limits	2000 FT/AGL
3	Airspace classification	C
4	ATS unit call sign Language(s)	Sakon Nakhon Tower English, Thai
5	Transition altitude	11000 FT
6	Remarks	NIL

VTUI AD 2.18 ATS COMMUNICATION FACILITIES

Service designation	Call sign	Frequency	Hours of operation	Remarks
1	2	3	4	5
APP	Sakon Nakhon Approach	123.35 MHZ	2300-1500	* Emergency Freq.
TWR	Sakon Nakhon Tower	*121.5 MHZ 119.65 MHZ 236.6 MHZ	2300-1500	
ATIS		365.0 KHZ	2300-1500	

VTUI AD 2.19 RADIO NAVIGATION AND LANDING AIDS

Type of aid, MAG VAR CAT of ILS/MLS (For VOR/ILS/MLS, give declination)	ID	Frequency	Hours of operation	Position of transmitting antenna coordinates	Elevation of DME transmitting antenna	Remarks
1	2	3	4	5	6	7
NDB	SN	365 KHZ	H24	171149.17N 10406653.42E	NIL	NDB unusable between 140-180 degrees beyond 15 NM
DVOR/DME	SKN	114.2 MHZ CH 89X	H24	171250.89N 1040812.34E	NIL	DVOR/DME restriction due to mountainous terrain surround as follow: Radial 000°-130° beyond 30 NM altitude should not below 2,100 FT. Radial 131°-280° beyond 30 NM altitude should not below 5,500 FT.
IILS CAT I RWY 23 LOC	ISKN	110.3 MHZ CH40X	H24	171107.73N 1040630.87E	NIL	Designated operation coverage 18 NM. ALT 6800 FT/AMSL.
DME				171106.06N 1040632.52E	527 FT	Paired with LOC FREQ
GP		335.0 MHZ	H24	171208.11N 1040728.88E	NIL	3 DEG REF Datum height 50 FT

VTUI AD 2.20 LOCAL AERODROME REGULATIONS

1. VFR REPORTING POINTS AND LOCAL PROCEDURES

Reporting points for VFR flight in order to expedite and maintain an orderly flow of air traffic into Sakon Nakhon Airport, the procedures of inbound traffic for VFR flight, conventional and prop - jet aircraft be set up as follows:

- Aircraft entering to land from north of Sakon Nakhon Airport, shall report over Nong Wai reservoir designated as November Whisky (172205.2N 1040316E) which is approximately 10 NM on radial 334 of SKN DVOR/DME (171250.89N1040812.34E), when reaching NW the aircraft will be instructed to join aerodrome traffic circuit accordingly.
- Aircraft entering to land from east of Sakon Nakhon Airport, shall report over Hoai Wung reservoir designated as Hotel Whisky (171805.2N 1043056.2E) which is approximately 22.5 NM on radial 077 of SKN DVOR/DME (171250.89N1040812.34E) when reaching HW the aircraft will be instructed to join aerodrome traffic circuit accordingly.
- Aircraft entering to land from south of Sakon Nakhon Airport, shall report over Nam Phung Dam designated as November Papa (170245.3N 1041216.3E), which is approximately 11 NM on radial 158 of SKN DVOR/DME (171250.89N1040812.34E), when reaching NP the aircraft will be instructed to join aerodrome traffic circuit accordingly.
- Aircraft entering to land from south of Sakon Nakhon Airport, shall report over Ban Na reservoir, designated as November Kilo (164625.4N 1040201.5E) which is approximately 27 NM on radial 192 of SKN DVOR/DME (171250.89N1040812.34E), when reaching NK the aircraft will be instructed to join aerodrome traffic circuit accordingly.
- Aircraft entering to land from west of Sakon Nakhon Airport, shall report over Nam Un reservoir, designated as November Uniform (171005.2N 1034646.5E) which is approximately 20.5 NM on radial 262 of SKN DVOR/DME (171250.89N1040812.34E), when reaching NU the aircraft will be instructed to join aerodrome traffic circuit accordingly.

VTUI AD 2.21 NOISE ABATEMENT PROCEDURES

NIL

VTUI AD 2.22 FLIGHT PROCEDURES

NIL

VTUI AD 2.23 ADDITIONAL INFORMATION

- Bird concentration in the vicinity of runway 23 (end of runway 05)

VTUI AD 2.24 CHARTS RELATED TO AN AERODROME

Chart name	Page
Aerodrome Chart - ICAO	AD 2-VTUI-2-1
Instrument Approach Chart - ICAO - VOR RWY 05	AD 2-VTUI-8-1
Instrument Approach Chart - ICAO - VOR RWY 05 (Fix and point list table)	AD 2-VTUI-8-2
Instrument Approach Chart - ICAO - VOR RWY 23	AD 2-VTUI-8-3
Instrument Approach Chart - ICAO - VOR RWY 23 (Fix and point list table)	AD 2-VTUI-8-4
Instrument Approach Chart - ICAO - ILS RWY 23	AD 2-VTUI-8-5
Instrument Approach Chart - ICAO - ILS RWY 23 (Fix and point list table)	AD 2-VTUI-8-6
Instrument Approach Chart - ICAO - LOC RWY 23	AD 2-VTUI-8-7
Instrument Approach Chart - ICAO - LOC RWY 23 (Fix and point list table)	AD 2-VTUI-8-8
Instrument Approach Chart - ICAO - RNAV (GNSS) RWY 05	AD 2-VTUI-8-9
Instrument Approach Chart - ICAO - RNAV (GNSS) RWY 05 (Tabular description)	AD 2-VTUI-8-10
Instrument Approach Chart - ICAO - RNAV (GNSS) RWY 23	AD 2-VTUI-8-11
Instrument Approach Chart - ICAO - RNAV (GNSS) RWY 23 (Tabular description)	AD 2-VTUI-8-12

INTENTIONALLY BLANK

AERODROME CHART - ICAO

17 11 43 N
104 07 07 E

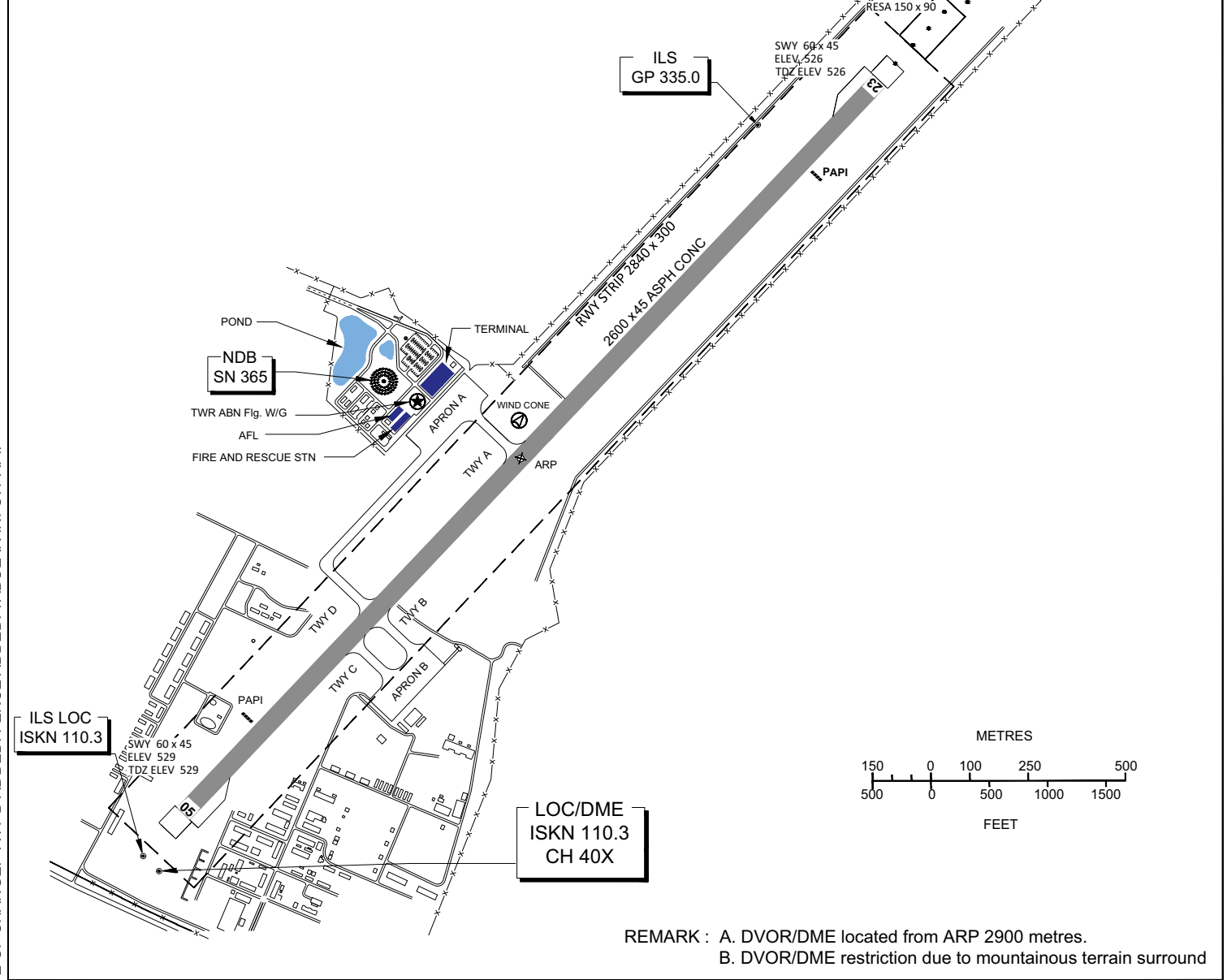
ELEV 529 FT

TWR 119.65
236.60

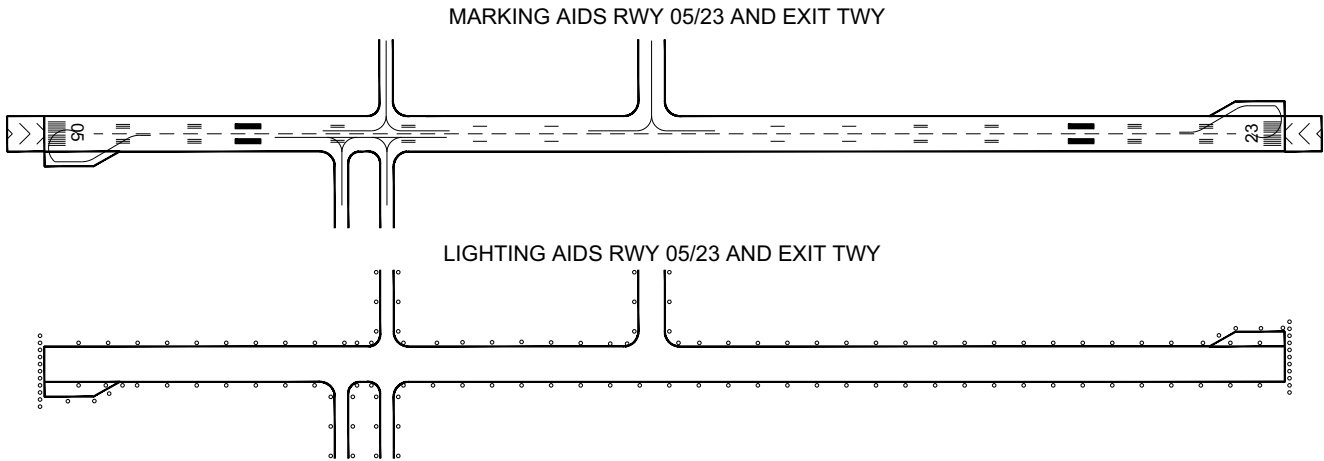
SAKON NAKHON / Sakon Nakhon

RWY	DIRECTION (TRUE BRG)	THR	BEARING STRENGTH
05	46	17 11 12.56 N 104 06 35.89 E	PCN 43/F/D/X/T
23	226	17 12 12.45 N 104 07 38.22 E	
TAXIWAY A,B,C			PCN 43/F/D/X/T
TAXIWAY D			PCN 46/F/C/X/T
APRON A (EAST)			PCN 47/R/D/X/T
APRON A (WEST)			PCN 47/R/C/X/T
APRON B			PCN 47/R/D/X/T

ELEVATIONS IN FEET AND DIMENSIONS IN METRES



CHANGE : REVISED CHART. MAG VAR. ANNUAL RATE OF CHANGE. TWY D ADDED. FENCE ADDED. TABULAR INFO. PAPI.



INTENTIONALLY BLANK

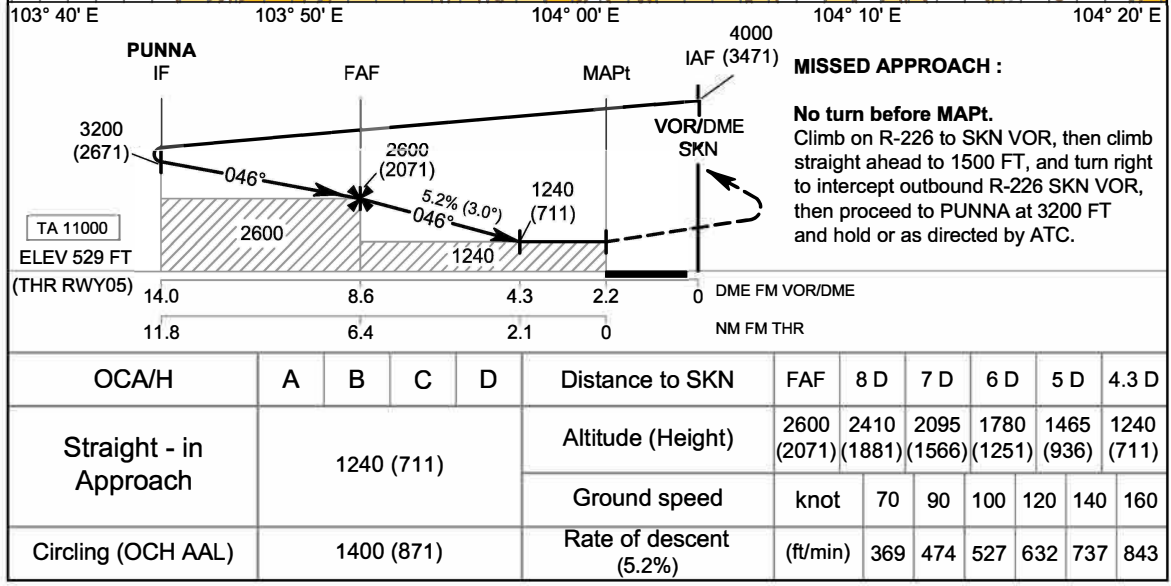
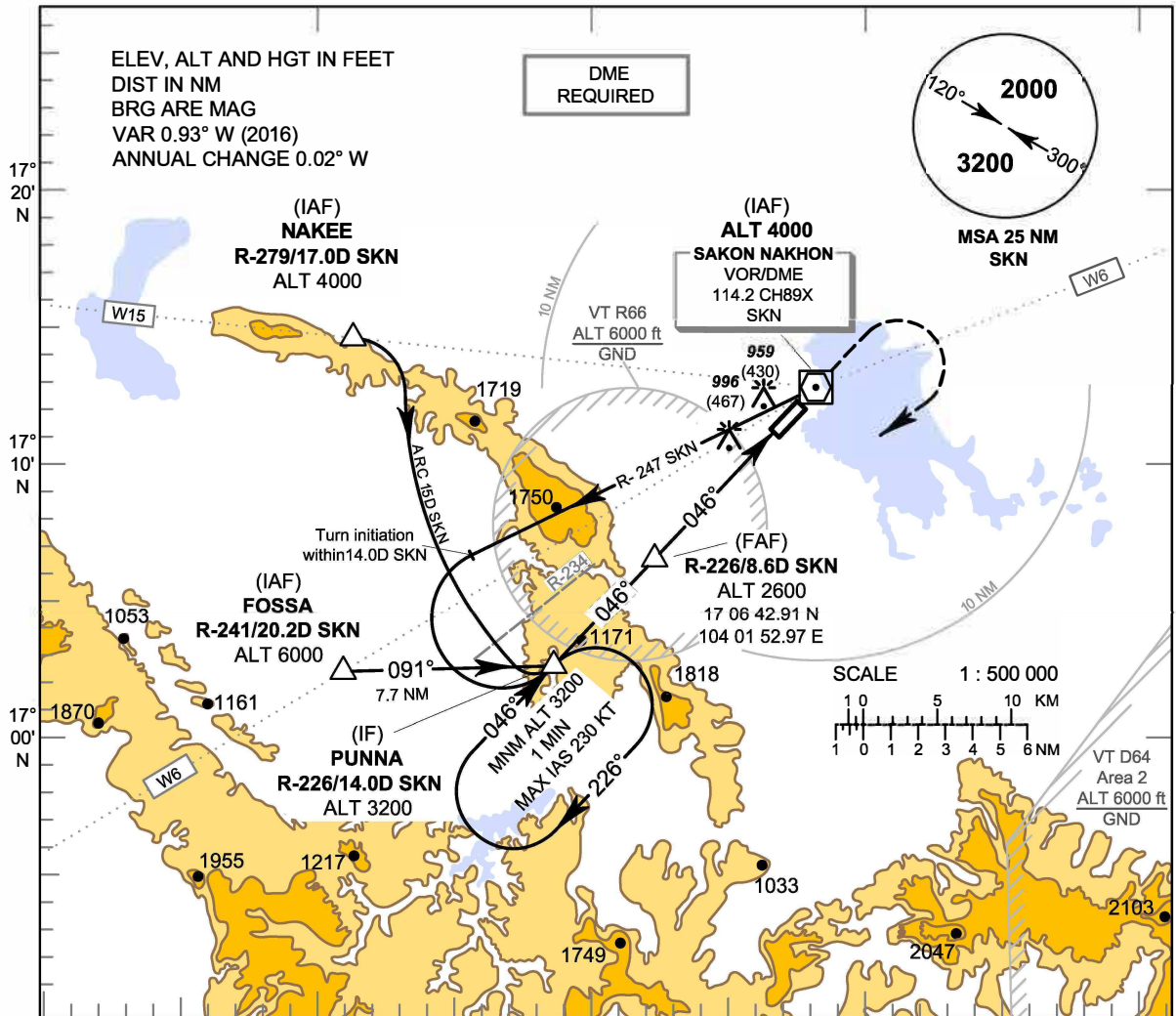
**INSTRUMENT
APPROACH
CHART - ICAO**

AERODROME ELEV 529 FT
HEIGHTS RELATED TO
AERODROME ELEV

APP : 123.35
TWR : 119.65 , 236.6

SAKON NAKHON / Sakon Nakhon (VTUI)

VOR RWY05



INSTRUMENT APPROACH CHART - ICAO **AERODROME ELEV 529 FT**
HEIGHTS RELATED TO
AERODROME ELEV

SAKON NAKHON / Sakon Nakhon (VTUI)
VOR RWY05

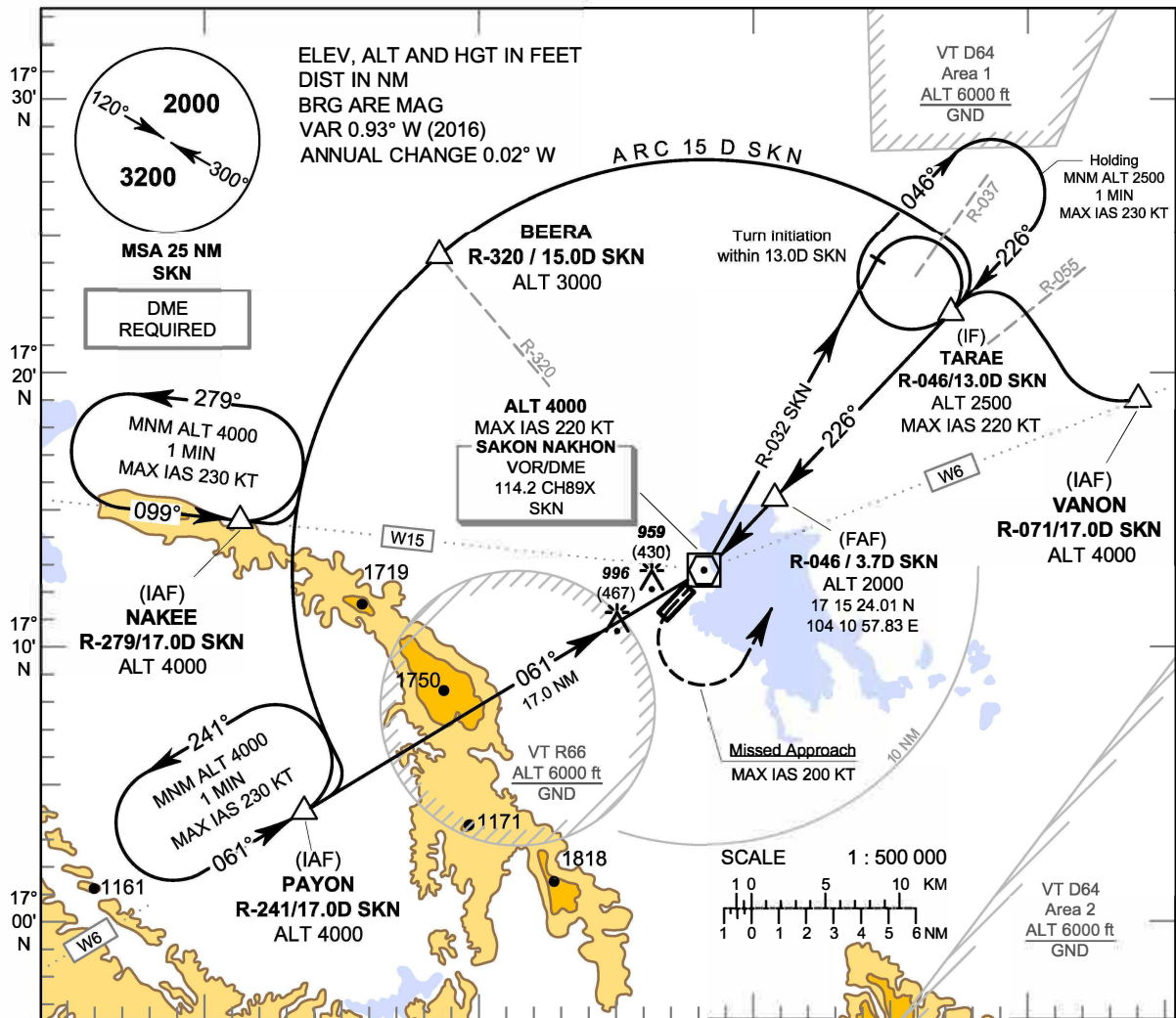
FIX/POINT		COORDINATES	
(IAF) NAKEE	R-279 / 17.0D SKN	17 15 05.96 N	103 50 35.93 E
(IAF) FOSSA	R-241 / 20.2D SKN	17 02 51.48 N	103 49 50.92 E
(IF) PUNNA	R-226 / 14.0D SKN	17 02 49.77 N	103 57 53.28 E
(FAF)	R-226 / 8.6D SKN	17 06 42.91 N	104 01 52.97 E
(MAPt)	R-226 / 2.2D SKN	17 11 13.09 N	104 06 35.28 E
(IAF) VOR	SKN	17 12 50.89 N	104 08 12.34 E

**INSTRUMENT
APPROACH
CHART - ICAO**

AERODROME ELEV 529 FT
HEIGHTS RELATED TO
AERODROME ELEV

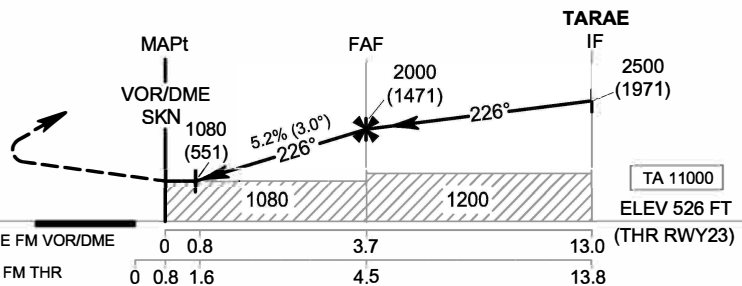
APP : 123.35
TWR : 119.65 , 236.6

SAKON NAKHON / Sakon Nakhon (VTUI)
VOR RWY23



MISSED APPROACH :

Speed restricted to
MAX IAS 200 KT until after turn.
At MAPt, turn left to intercept outbound
R-046 SKN VOR, then proceed to
TARAE at 2500 FT,
and hold or as directed by ATC.



OCA/H	A	B	C	D	Distance to SKN	0.8 D	1 D	2 D	3 D	FAF		
Straight - in Approach	1080 (551)				Altitude (Height)	1080 (551)	1150 (621)	1465 (936)	1780 (1251)	2000 (1471)		
					Ground speed	knot	70	90	100	120	140	160
Circling (OCH AAL)	1400 (871)				Rate of descent (5.2%)	(ft/min)	369	474	527	632	737	843

INSTRUMENT APPROACH CHART - ICAO **AERODROME ELEV 529 FT**
 HEIGHTS RELATED TO
 AERODROME ELEV

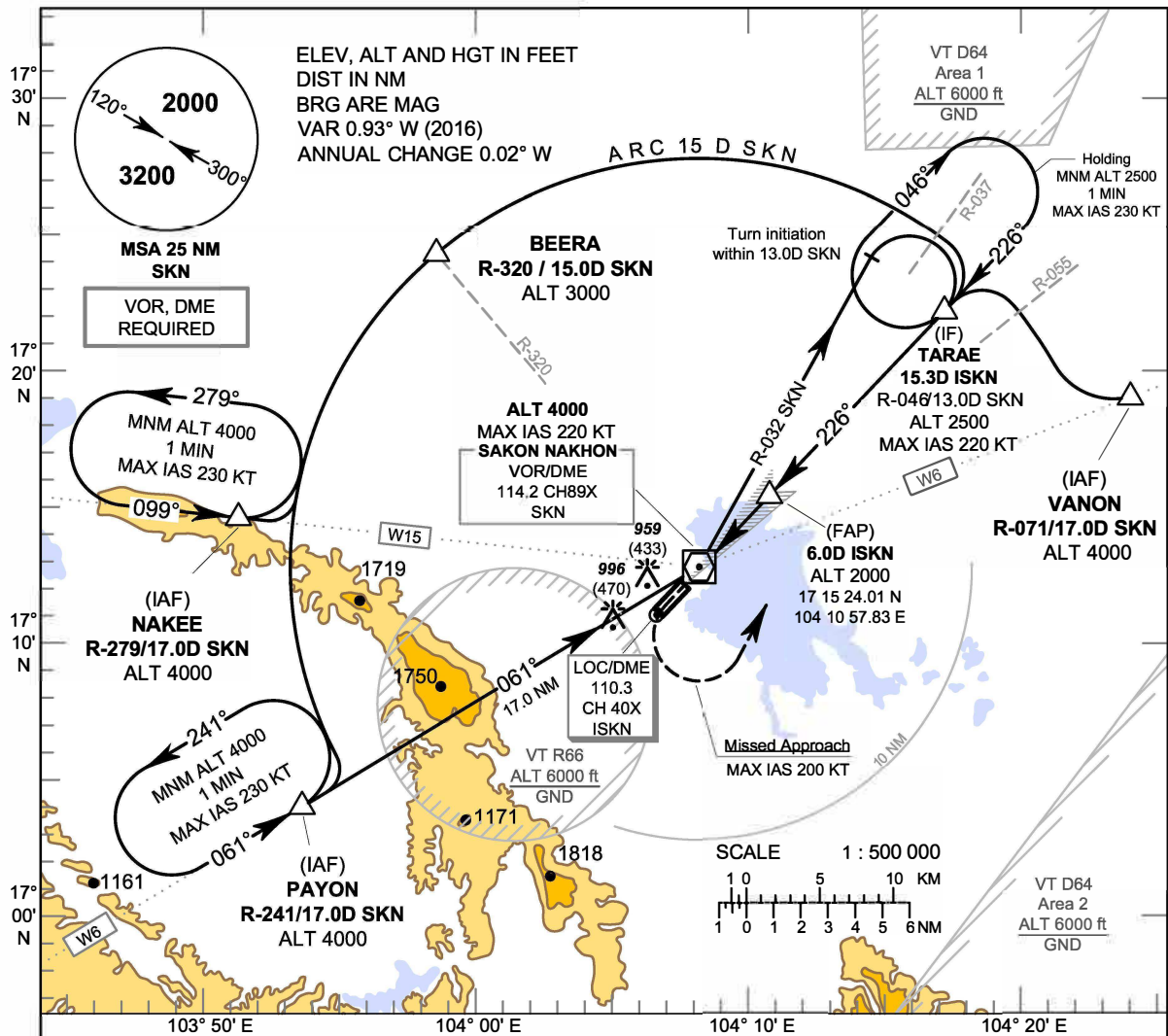
SAKON NAKHON / Sakon Nakhon (VTUI)
VOR RWY23

FIX/POINT		COORDINATES	
(IAF) NAKEE	R-279 / 17.0D SKN	17 15 05.96 N	103 50 35.93 E
(IAF) PAYON	R-241 / 17.0D SKN	17 04 24.70 N	103 52 46.34 E
(IAF) VANON	R-071 / 17.0D SKN	17 18 38.93 N	104 24 52.65 E
BEERA	R-320 / 15.0D SKN	17 24 13.04 N	103 57 55.37 E
(IF) TARAE	R-046 / 13.0D SKN	17 22 01.55 N	104 17 52.00 E
(FAF)	R-046 / 3.7D SKN	17 15 24.01 N	104 10 57.83 E
(MAPt) VOR	SKN	17 12 50.89 N	104 08 12.34 E

INSTRUMENT APPROACH CHART - ICAO
AERODROME ELEV 529 FT
HEIGHTS RELATED TO THR RWY23 - ELEV 526 FT

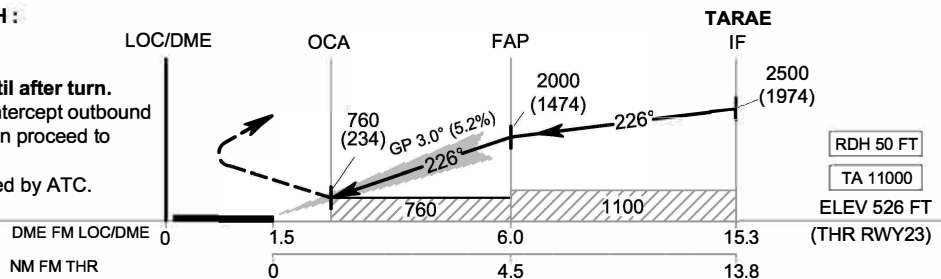
APP : 123.35
TWR : 119.65 , 236.6

SAKON NAKHON / Sakon Nakhon (VTUI)
ILS RWY23



MISSED APPROACH :

Speed restricted to **MAX IAS 200 KT** until after turn.
At OCA, turn left to intercept outbound R-046 SKN VOR, then proceed to TARAE at 2500 FT, and hold or as directed by ATC.



OCA/H		A	B	C	D	Ground speed		knot	70	90	100	120	140	160
Straight - in Approach	CAT I	760 (234)				Rate of descent (3.0°)		(ft/min)	372	478	531	637	743	849
		Circling (OCH AAL)												

INSTRUMENT APPROACH CHART - ICAO **AERODROME ELEV 529 FT**
HEIGHTS RELATED TO
THR RWY23 - ELEV 526 FT

SAKON NAKHON / Sakon Nakhon (VTUI)

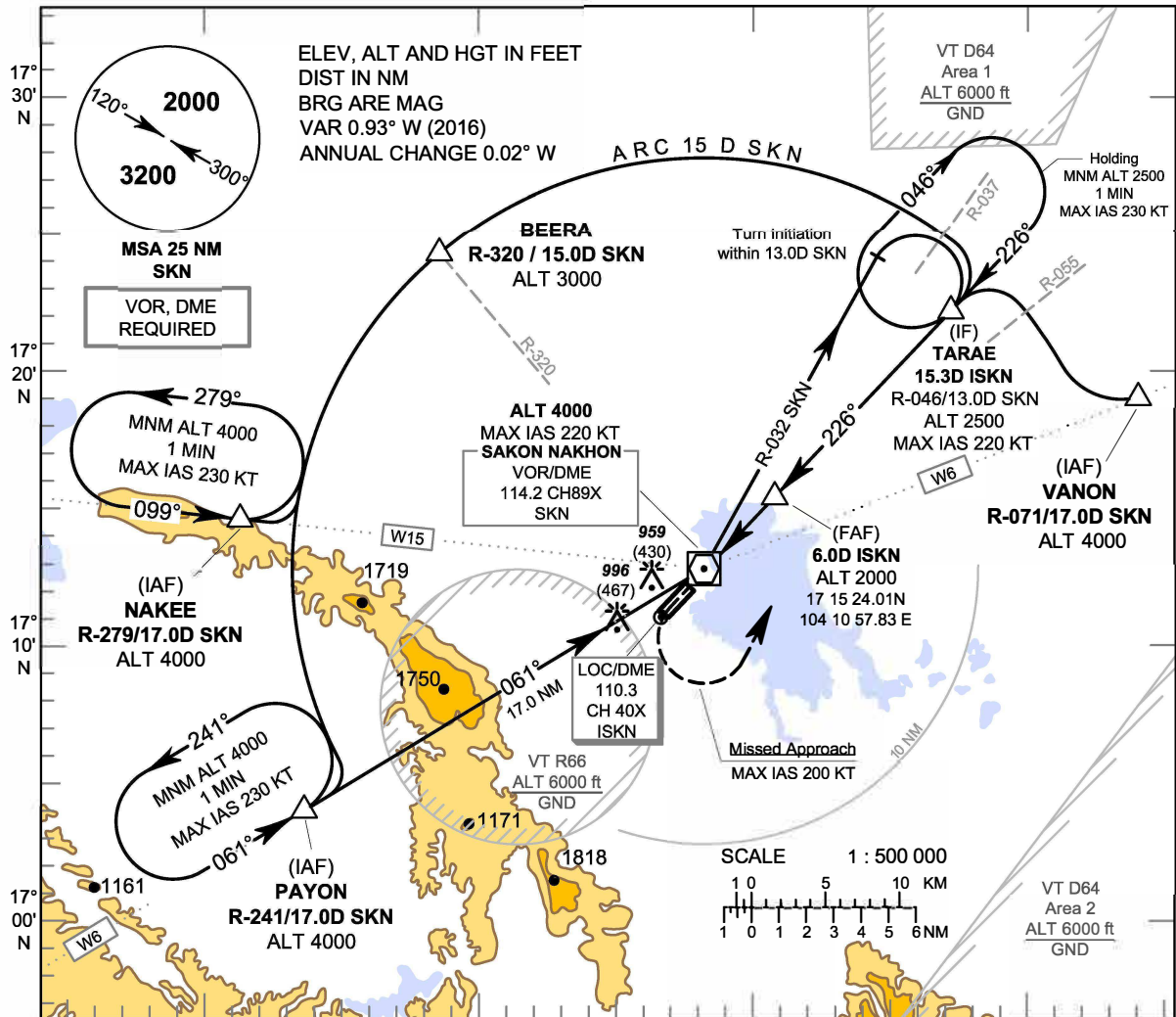
ILS RWY23

FIX/POINT		COORDINATES	
(IAF) NAKEE	R-279 / 17.0D SKN	17 15 05.96 N	103 50 35.93 E
(IAF) PAYON	R-241 / 17.0D SKN	17 04 24.70 N	103 52 46.34 E
(IAF) VANON	R-071 / 17.0D SKN	17 18 38.93 N	104 24 52.65 E
BEERA	R-320 / 15.0D SKN	17 24 13.04 N	103 57 55.37 E
(IF) TARAE	15.3D ISKN	17 22 01.55 N	104 17 52.00 E
(FAP)	6.0D ISKN	17 15 24.01 N	104 10 57.83 E
LOC/DME	ISKN	17 11 07.73 N	104 06 30.87 E
VOR	SKN	17 12 50.89 N	104 08 12.34 E

INSTRUMENT APPROACH CHART - ICAO
AERODROME ELEV 529 FT
HEIGHTS RELATED TO AERODROME ELEV

APP : 123.35
TWR : 119.65 , 236.6

SAKON NAKHON / Sakon Nakhon (VTUI)
LOC RWY23



MISSED APPROACH :

Speed restricted to **MAX IAS 200 KT until after turn.**
At MAPt, turn left to intercept outbound R-046 SKN VOR, then proceed to TARAE at 2500 FT, and hold or as directed by ATC.

	LOC/DME	MAPt	FAF	TARAE IF	
	830 (301)	2000 (1471)	2500 (1971)		
	830	1100		TA 11000	
				ELEV 526 FT	
				(THR RWY23)	
DME FM LOC/DME	0	1.5	2.3	6.0	15.3
NM FM THR	0	0.8	4.5	13.8	

OCA/H	A	B	C	D	Distance to ISKN	MAPt	3 D	4 D	5 D	FAF		
Straight - in Approach	830 (301)				Altitude (Height)	830 (301)	1050 (521)	1370 (841)	1685 (1156)	2000 (1471)		
					Ground speed	knot	70	90	100	120	140	160
Circling (OCH AAL)	1400 (871)				Rate of descent (5.2%)	(ft/min)	369	474	527	632	737	843

INSTRUMENT APPROACH CHART - ICAO **AERODROME ELEV 529 FT**
HEIGHTS RELATED TO
AERODROME ELEV

SAKON NAKHON / Sakon Nakhon (VTUI)

LOC RWY23

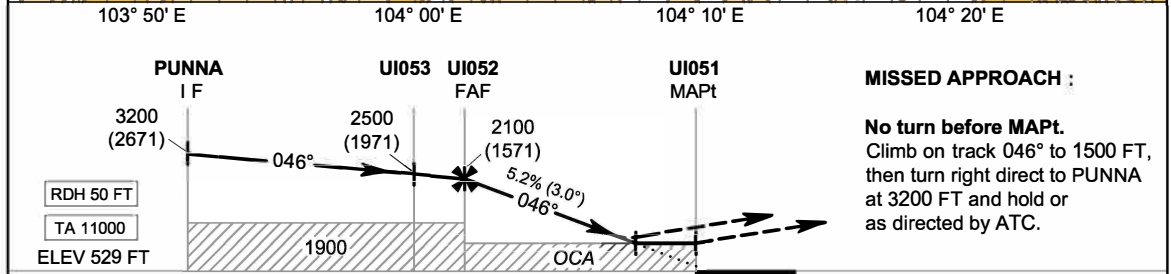
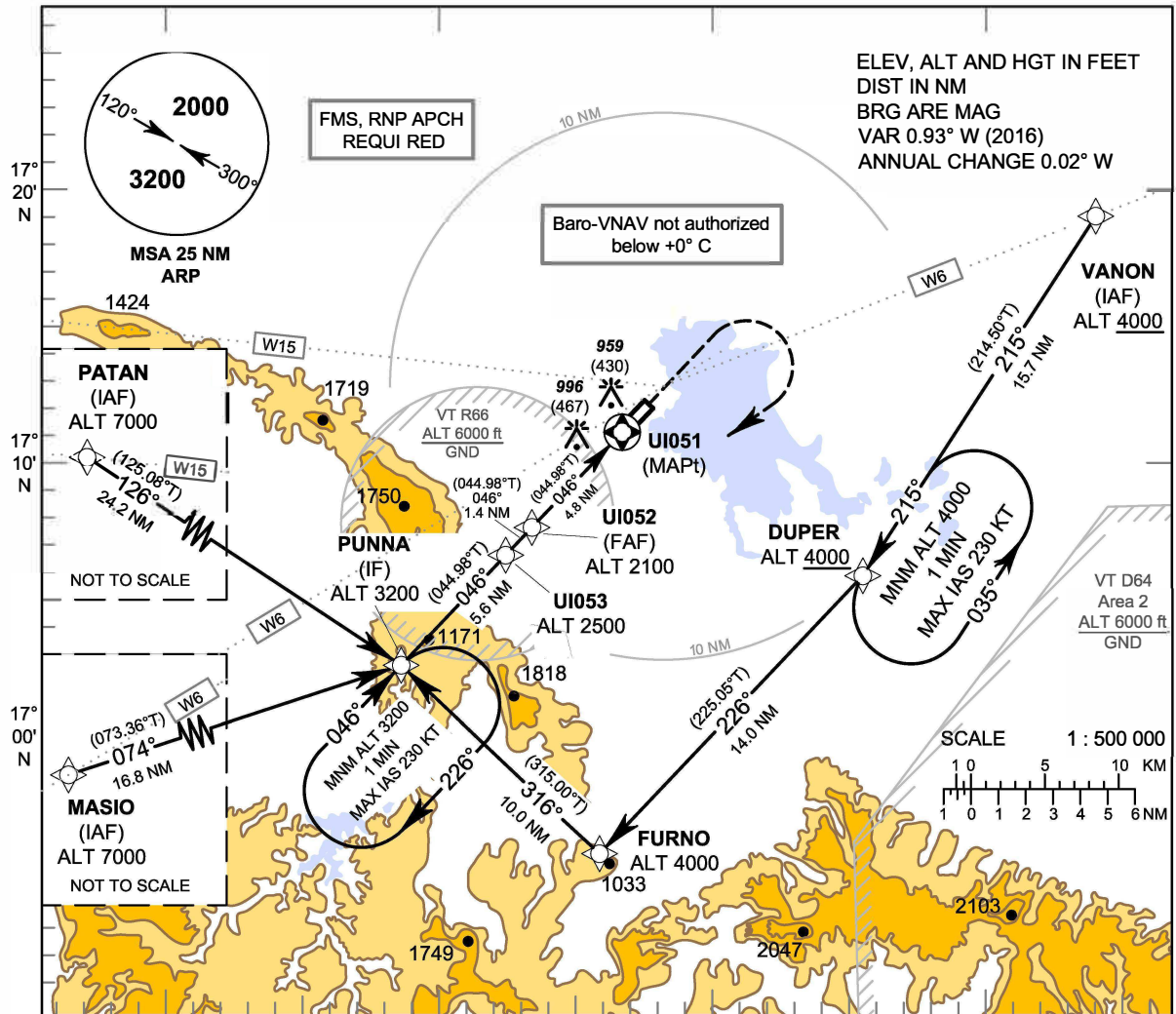
FIX/POINT		COORDINATES	
(IAF) NAKEE	R-279 / 17.0D SKN	17 15 05.96 N	103 50 35.93 E
(IAF) PAYON	R-241 / 17.0D SKN	17 04 24.70 N	103 52 46.34 E
(IAF) VANON	R-071 / 17.0D SKN	17 18 38.93 N	104 24 52.65 E
BEERA	R-320 / 15.0D SKN	17 24 13.04 N	103 57 55.37 E
(IF) TARAE	15.3D ISKN	17 22 01.55 N	104 17 52.00 E
(FAF)	6.0D ISKN	17 15 24.01 N	104 10 57.83 E
MAPt	2.3D ISKN	17 12 45.68 N	104 08 12.83 E
LOC/DME	ISKN	17 11 07.73 N	104 06 30.87 E
VOR	SKN	17 12 50.89 N	104 08 12.34 E

**INSTRUMENT
APPROACH
CHART - ICAO**

AERODROME ELEV 529 FT
HEIGHTS RELATED TO
AERODROME ELEV

APP : 123.35
TWR : 119.65 , 236.6

SAKON NAKHON / Sakon Nakhon (VTUI)
RNAV (GNSS) RWY05



OCA/H	A	B	C	D	NM to NEXT WPT	FAF	4 NM	3 NM	2 NM	1.6 NM
LNAV/VNAV	1160 (631)				Altitude (Height)	2100 (1571)	1840 (1311)	1525 (996)	1210 (681)	1080 (551)
LNAV	1080 (551)				Ground speed	knot	70	90	100	120 140 160
Circling (OCH AAL)	1400 (871)				Rate of descent (5.2%)	(ft/min)	369	474	527	632 737 843

INSTRUMENT AERODROME ELEV 529 FT
APPROACH HEIGHTS RELATED TO
CHART - ICAO AERODROME ELEV

SAKON NAKHON / Sakon Nakhon (VTUI)
RNAV (GNSS) RWY05

TABULAR DESCRIPTION

RNAV (GNSS) RWY05											
Serial	Path	Waypoint Identifier	Flyover	Course	Magnetic	Distance	Turn	Altitude	Speed	VPA/	Navigation
Number	Descriptor			° M (° T)	Variation	(NM)	Direction	(FT)	(KT)	TCH	Specification
010	IF	VANON (IAF)	-	-	+0.95	-	-	+4000	-	-	RNP APCH
020	TF	DUPER	-	215°(214.50°)	+0.95	15.7	R	+4000	-	-	RNP APCH
030	TF	FURNO	-	226°(225.05°)	+0.95	14.0	R	@4000	-	-	RNP APCH
040	TF	PUNNA (IF)	-	316°(315.00°)	+0.95	10.0	-	@3200	-	-	RNP APCH
010	IF	MASIO (IAF)	-	-	+0.95	-	-	@7000	-	-	RNP APCH
020	TF	PUNNA (IF)	-	074°(073.36°)	+0.95	16.8	-	@3200	-	-	RNP APCH
010	IF	PATAN (IAF)	-	-	+0.95	-	-	@7000	-	-	RNP APCH
020	TF	PUNNA (IF)	-	126°(125.08°)	+0.95	24.2	-	@3200	-	-	RNP APCH
010	IF	PUNNA (IF)	-	-	+0.95	-	-	@3200	-	-	RNP APCH
020	TF	UI053	-	046°(044.98°)	+0.95	5.6	-	@2500	-	-	RNP APCH
030	TF	UI052 (FAF)	-	046°(044.98°)	+0.95	1.4	-	@2100	-	-	RNP APCH
040	TF	UI051 (MAPt)	Y	046°(044.98°)	+0.95	4.8	-	@579	-	-3.0/50	RNP APCH
050	CA	-	-	046°(044.98°)	+0.95	-	-	+ 1500	-	-	RNP APCH
060	DF	PUNNA (IF)	-	-	+0.95	-	R	+ 3200	-	-	RNP APCH
070	HM	PUNNA (IF)	Y	046°(044.98°)	+0.95	1 minute	R	+ 3200	- 230	-	RNP APCH

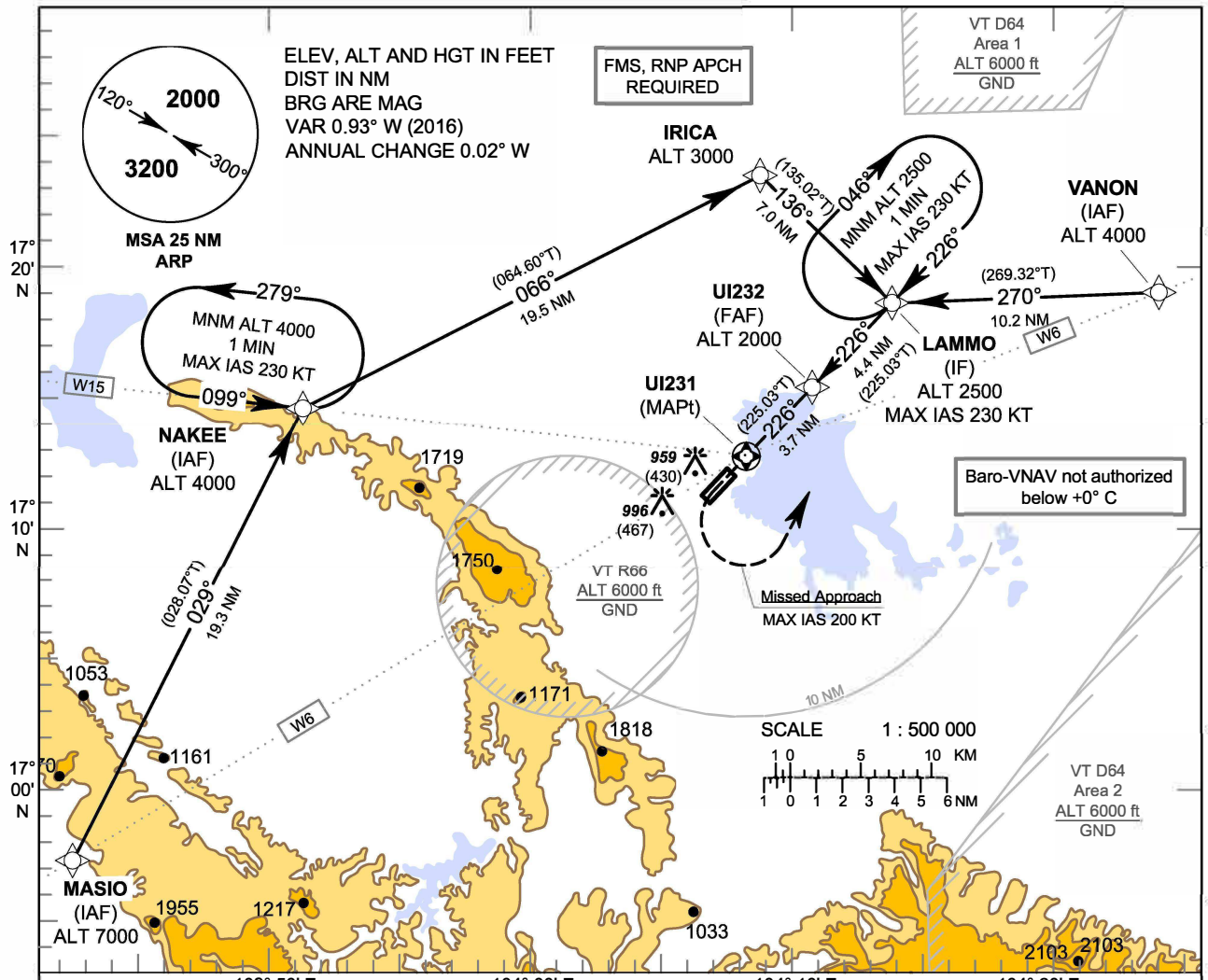
WAYPOINT LIST

RNAV (GNSS) RWY05		
Waypoint Identifier	Coordinates	
VANON	17° 18' 38.93" N	104° 24' 52.65" E
DUPER	17° 05' 40.03" N	104° 15' 36.25" E
FURNO	16° 55' 43.91" N	104° 05' 16.11" E
MASIO	16° 58' 01.07" N	103° 41' 06.91" E
PATAN	17° 16' 47.29" N	103° 37' 15.11" E
PUNNA	17° 02' 49.77" N	103° 57' 53.28" E
UI053	17° 06' 48.43" N	104° 02' 01.20" E
UI052	17° 07' 48.18" N	104° 03' 03.21" E
UI051 (THR05)	17° 11' 12.56" N	104° 06' 35.89" E

INSTRUMENT APPROACH CHART - ICAO
AERODROME ELEV 529 FT
HEIGHTS RELATED TO AERODROME ELEV

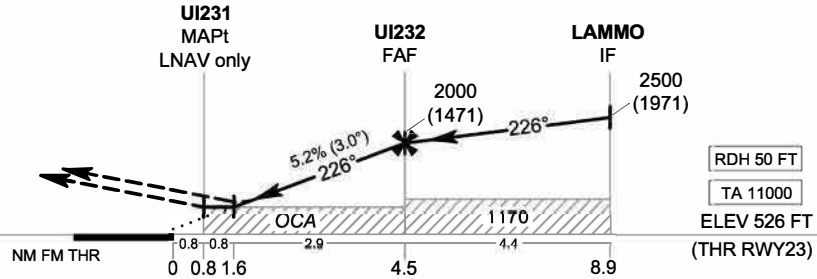
APP : 123.35
TWR : 119.65 , 236.6

SAKON NAKHON / Sakon Nakhon (VTUI)
RNAV (GNSS) RWY23



MISSED APPROACH :

Speed restricted to
MAX IAS 200 KT until after turn.
At MAPt, turn left direct to
LAMMO at 2500 FT,
and hold or as directed by ATC.



OCA/H	A	B	C	D	NM to NEXT WPT	1.6 NM	2 NM	3 NM	4 NM	FAF		
LNAV/VNAV	1170 (641)				Altitude (Height)	1080 (551)	1210 (681)	1525 (996)	1845 (1316)	2000 (1471)		
LNAV	1080 (551)				Ground speed	knot	70	90	100	120	140	160
Circling (OCH AAL)	1400 (871)				Rate of descent (5.2%)	(ft/min)	369	474	527	632	737	843

INSTRUMENT APPROACH CHART - ICAO **AERODROME ELEV 529 FT**
HEIGHTS RELATED TO
AERODROME ELEV

SAKON NAKHON / Sakon Nakhon (VTUI)
RNAV (GNSS) RWY23

TABULAR DESCRIPTION

RNAV (GNSS) RWY23											
Serial Number	Path Descriptor	Waypoint Identifier	Flyover	Course ° M (° T)	Magnetic Variation	Distance (NM)	Turn Direction	Altitude (FT)	Speed (KT)	VPA/ TCH	Navigation Specification
010	IF	MASIO (IAF)	-	-	+0.95	-	-	@7000	-	-	RNP APCH
020	TF	NAKEE (IAF)	-	029°(028.07°)	+0.95	19.3	R	@4000	-	-	RNP APCH
030	TF	IRICA	-	066°(064.60°)	+0.95	19.5	R	@3000	-	-	RNP APCH
040	TF	LAMMO (IF)	-	136°(135.02°)	+0.95	7.0	-	@2500	-230	-	RNP APCH
010	IF	NAKEE (IAF)	-	-	+0.95	-	-	@4000	-	-	RNP APCH
020	TF	IRICA	-	066°(064.60°)	+0.95	19.5	R	@3000	-	-	RNP APCH
030	TF	LAMMO (IF)	-	136°(135.02°)	+0.95	7.0	-	@2500	-230	-	RNP APCH
010	IF	VANON (IAF)	-	-	+0.95	-	-	@4000	-	-	RNP APCH
020	TF	LAMMO (IF)	-	270°(269.32°)	+0.95	10.2	-	@2500	-230	-	RNP APCH
010	IF	LAMMO (IF)	-	-	+0.95	-	-	@2500	-230	-	RNP APCH
020	TF	UI232 (FAF)	-	226°(225.03°)	+0.95	4.4	-	@2000	-	-	RNP APCH
030	TF	UI231 (MAPt)	Y	226°(225.03°)	+0.95	3.7	L	@830	-	-3.0/50	RNP APCH
040	DF	LAMMO (IF)	-	-	+0.95	-	-	+ 2500	-200	-	RNP APCH
050	HM	LAMMO (IF)	Y	226°(225.03°)	+0.95	1 minute	R	+ 2500	-230	-	RNP APCH

WAYPOINT LIST

RNAV (GNSS) RWY23		
Waypoint Identifier	Coordinates	
MASIO	16° 58' 01.07" N	103° 41' 06.91" E
NAKEE	17° 15' 05.96" N	103° 50' 35.93" E
IRICA	17° 23' 29.74" N	104° 09' 02.67" E
VANON	17° 18' 38.93" N	104° 24' 52.65" E
LAMMO	17° 18' 31.38" N	104° 14' 12.98" E
UI232	17° 15' 24.07" N	104° 10' 57.76" E
UI231 (MAPt)	17° 12' 46.51" N	104° 08' 13.70" E
THR 23	17° 12' 12.45" N	104° 07' 38.22" E