

VTUD AD 2.1 AERODROME LOCATION INDICATOR AND NAME

VTUD - UDON THANI / UDON THANI AIRPORT

VTUD AD 2.2 AERODROME GEOGRAPHICAL AND ADMINISTRATIVE DATA

1	ARP coordinates and site at AD	172311.17N 1024717.69E
2	Direction and distance from (city)	3 KM SW, from city
3	Elevation/Reference temperature	579 FT/26°C
4	Geoid Undulation at AD ELEV PSN	NIL
5	MAG VAR/Annual change	0.87°W(2016) / 0.01°W
6	AD Administration, address, telephone, telefax, telex, AFS	Director of Udon Thani Airprot Udon Thani Airport Makkhaeng, Muang Udon Thani 41000 Thailand Tel: +664 224 4426 Fax: +664 224 6804 AFS: VTUDYDYX
7	Types of traffic permitted (IFR/VFR)	IFR/VFR
8	Remarks	Operator: Department of Airports

VTUD AD 2.3 OPERATIONAL HOURS

1	Aerodrome Operator	2200-1500
2	Customs and immigration	On request
3	Health and sanitation	On request
4	AIS Briefing Office	2300-1500
5	ATS Reporting Office (ARO)	NIL
6	MET Briefing Office	NIL
7	ATS	2300-1430
8	Fuelling	2300-1400
9	Handling	NIL
10	Security	NIL
11	De-icing	NIL
12	Remarks	NIL

VTUD AD 2.4 HANDLING SERVICES AND FACILITIES

1	Cargo-handling facilities	NIL
2	Fuel/oil types	JET A-1, AVGAS
3	Fuelling facilities/capacity	3 JET A-1 Refueller @ 12,000 L1 JET A-1 Refueller @ 22,000 L1 AVGAS DC Motor Dispenser from drum 200 L
4	De-icing facilities	NIL
5	Hangar space for visiting aircraft	NIL
6	Repair facilities for visiting aircraft	NIL
7	Remarks	NIL

VTUD AD 2.5 PASSENGER FACILITIES

1	Hotels	Near the AD and in the city
2	Restaurants	At AD and in the city
3	Transportation	Limousines and shuttle bus
4	Medical facilities	Hospital in the city
5	Bank and Post Office	Bank: NIL Post office: At AD, open 0300-1100
6	Tourist Office	At AD and in the city
7	Remarks	NIL

VTUD AD 2.6 RESCUE AND FIRE FIGHTING SERVICES

1	AD category for fire fighting	Category 8
2	Rescue equipment	Yes
3	Capability for removal of disabled aircraft	NIL
4	Remarks	NIL

VTUD AD 2.7 SEASONAL AVAILABILITY - CLEARING

1	Types of clearing equipment	NIL
2	Clearance priorities	NIL
3	Remarks	The aerodrome is available all seasons.

VTUD AD 2.8 APRONS, TAXIWAYS AND CHECK LOCATIONS/POSITIONS DATA

1	Apron surface and strength	Surface: Concrete Strength: PCN 61/R/C/X/T
2	Taxiway width, surface and strength	TWY A-TWY N Width: 23 M Surface: Concrete Strength: PCN 61/R/C/X/T
3	Altimeter checkpoint location and elevation	NIL
4	VOR checkpoints	NIL
5	INS checkpoints	NIL
6	Remarks	NIL

VTUD AD 2.9 SURFACE MOVEMENT GUIDANCE AND CONTROL SYSTEM AND MARKINGS

1	Use of aircraft stand ID signs, TWY guide lines and visual docking/parking guidance system of aircraft stands	Aircraft stand ID signs: Marked TWY guide lines: Yes VDGS of aircraft stands: NIL, aircraft shall follow marshaller strictly.
2	RWY and TWY markings and LGT	RWY marking: RWY Designation, THR, TDZ, CL, Aiming Point and RWY Side Stripe RWY LGT: THR, RWY Edge and RWY End TWY marking: CL and Edge TWY LGT: TWY Edge
3	Stop bars	NIL
4	Remarks	NIL

VTUD AD 2.10 AERODROME OBSTACLES

In approach/TKOF areas			In circling areas and at AD		Remarks
1			2		3
RWY/Area affected	Obstacle type Elevation Markings/LGT	Coordinates	Obstacle type Elevation Markings/LGT	Coordinates	
a	b	c	a	b	
NIL	NIL	NIL	Radio mast HGT 80 M painted red/ white LGTD on top	172444N 1024733E	NIL
			Radio mast HGT 105 M painted red/ white LGTD on top.	172655N 1024714E	
			Two Radio masts HGT 120 M Painted red/white LGTD on top	172455N 1024738E 172343N 1024743E	
			Radio mast HGT 73 M painted red/white LGTD on top	172419N 1024648E	

VTUD AD 2.11 METEOROLOGICAL INFORMATION PROVIDED

1	Associated MET Office	Aeronautical Meteorological Station-Udon Thani, Upper Northeastern Meteorological Center, Thai Meteorological Department (TMD)
2	Hours of service MET Office outside hours	2200-1500 NIL
3	Office responsible for TAF preparation Periods of validity	Supply TAF from Upper Northeastern Meteorological Center 24 HR
4	Type of landing forecast Interval of issuance	TREND 1 HR
5	Briefing/consultation provided	Personal Consultation Tel: +664 224 6803
6	Flight documentation Language(s) used	NIL
7	Charts and other information available for briefing or consultation	S, U85, Daily Weather Forecast, satellite and radar images
8	Supplementary equipment available for providing information	Automated Weather Observation System (AWOS) and Low Level Wind Shear Alert System (LLWAS)
9	ATS units provided with information	Udon Thani TWR
10	Additional information (limitation of service, etc.)	NIL

VTUD AD 2.12 RUNWAY PHYSICAL CHARACTERISTICS

Designations RWY NR	TRUE BRG	Dimensions of RWY(M)	Strength (PCN) and surface of RWY and SWY	THR coordinates RWY end coordinates THR geoid undulation	THR elevation and highest elevation of TDZ of precision APP RWY
1	2	3	4	5	6
12	117.69°	3048x45	PCN 65/F/C/X/T Asphalt	172333.72N 1024631.65E	THR 579 FT TDZ 579 FT
30	297.68°	3048x45	PCN 65/F/C/X/T Asphalt	172248.62N 1024803.73E	THR 579 FT TDZ 579 FT

Slope of RWY-SWY	SWY dimensions (M)	CWY dimensions (M)	Strip dimensions (M)	OFZ	Remarks
7	8	9	10	11	12
NIL	300x45	NIL	3768x300	NIL	NIL
NIL	300x45	NIL	3768x300	NIL	NIL

VTUD AD 2.13 DECLARED DISTANCES

RWY Designator	TORA (M)	TODA (M)	ASDA (M)	LDA (M)	Remarks
1	2	3	4	5	6
12	3048	3048	3348	3048	NIL
30	3048	3048	3348	3048	NIL

VTUD AD 2.14 APPROACH AND RUNWAY LIGHTING

RWY Designator	APCH LGT type LEN INTST	THR LGT colour WBAR	VASIS (MEHT) PAPI	TDZ, LGT LEN	RWY Centre Line LGT Length, spacing, colour, INTST	RWY edge LGT LEN, spacing, colour INTST	RWY End LGT colour WBAR	SWY LGT LEN (M) colour	Remarks
1	2	3	4	5	6	7	8	9	10
12	SALS 420 M LIH	Green	PAPI LEFT 3° 20.7 M	NIL	NIL	3 048 M 60 M White LIH	Red	Red	NIL
30	SALS 420 M LIH	Green	PAPI LEFT 3°	NIL	NIL	3 048 M 60 M White LIH	Red	Red	NIL

VTUD AD 2.15 OTHER LIGHTING, SECONDARY POWER SUPPLY

1	ABN/IBN location, characteristics and hours of operation	ABN: At Tower Building, FLG WG EV 4 SEC.. IBN: NIL
2	LDI location and LGT Anemometer location and LGT	NIL
3	TWY edge and centre line lighting	EDGE: ALL TWY
4	Secondary power supply/switch-over time	Secondary power supply to all lighting at the airport. Switch-over time 13 SEC
5	Remarks	NIL

VTUD AD 2.16 HELICOPTER LANDING AREA

1	Coordinates TLOF or THR of FATO Geoid undulation	NIL
2	TLOF and/or FATO elevation M/FT	NIL
3	TLOF and FATO area dimensions, surface, strength, marking	NIL
4	True and MAG BRG of FATO	NIL
5	Declared distance available	NIL
6	APP and FATO lighting	NIL
7	Remarks	NIL

VTUD AD 2.17 ATS AIRSPACE

1	Designation and lateral limits	A circle of 5 NM radius centred on UDN DVOR/DME (172304.20N 1024630.05E)
2	Vertical limits	3000 FT/AGL
3	Airspace classification	C
4	ATS unit call sign Language(s)	Udon Tower English, Thai
5	Transition altitude	11000 FT
6	Remarks	NIL

VTUD AD 2.18 ATS COMMUNICATION FACILITIES

Service designation	Call sign	Frequency	Hours of operation	Remarks
1	2	3	4	5
APP	Udon Approach	126.2 MHZ 265.9 MHZ ***119.45 MHZ	2300-1430	*Emergency Freq. **Other than this period 1 HR PN to ATC ***Backup Freq.
TWR	Udon Tower	*121.5 MHZ 122.5 MHZ *243.0 MHZ 355.4 MHZ ***119.45 MHZ	2300-1430	
GND	Udon Ground	121.9 MHZ 275.8 MHZ	2300-1430	
ATIS	Udon Airport	127.6 MHZ	2300-1430	UD NDB out of services

VTUD AD 2.19 RADIO NAVIGATION AND LANDING AIDS

Type of aid, MAG VAR CAT of ILS/MLS (For VOR/ILS/MLS, give declination)	ID	Frequency	Hours of operation	Position of transmitting antenna coordinates	Elevation of DME transmitting antenna	Remarks
1	2	3	4	5	6	7
NDB	UD	236 KHZ	H24	172316.17N 1024611.49E		
VOR/DME	UDN	114.3 MHZ CH90X	H24	172304.20N 1024630.05E		DVOR/DME restriction, due to mountainous terrain surround DVOR/DME station coverage check does not provide adequate signal at required altitudes in various areas as follow: 1.20 NM orbit (due to border limited) - RDL331°-030° ALT should not below 2500 FT 2. 40 NM orbit - RDL031°-090° ALT should not below 3000 FT - RDL091°-190° ALT should not below 4000 FT - RDL191°-220° ALT should not below 5000 FT - RDL221°-330° ALT should not below 4000 FT 3. The airways were checked and result found satisfactory - Airway W15 on RDL097° flown to 40.1 NM ALT 4000 FT - Airway W4 on RDL143° flown to 50.0 NM ALT 4000 FT
ILS CAT I LOC RWY30	IUDN	110.1 MHZ	H24	172341.25N 1024616.25E		- Designated operational coverage 18 NM ±10° and 10 NM ±35° of localizer course, no back course and voice feature, the antenna array is located on extended runway centre line at distance 505 M from THR of runway 12.
GP/DME		334.4 MHZ CH38X	H24	172256.70N 1024755.94E		- Glide path 3° - DME co-located with Glide Slope power output 100 watts Uni-directional.
TACAN	UDN	CH86	0000-1300	1722.9N 10248.1E		Military Facilities PN 30 min to ATC

VTUD AD 2.20 LOCAL AERODROME REGULATIONSS

1. VFR REPORTING POINTS AND LOCAL PROCEDURES

1.1 Reporting points for VFR flight In order to expedite and maintain an order flow of air traffic into Udon Thani Airport, the procedures of the inbound traffic of VFR flight, conventional and prop-jet aircraft be set up as follow:

- a) Aircraft entering to land from north and northeast of Udon Thani Airport, will report over Bantin Distric, designated as TANGO (1739.6N 10247.6E) which is 17 NM on R-360 of UD VOR. When reaching TANGO the aircraft will be instructed to join aerodrome traffic pattern accordingly
- b) Aircraft entering to land from east and southeast of Udon Thani Airport, will report over Nonghan District, designated as NOVEMBER (1721.5N 10306.1E) which is 17 NM on R-095 of UD VOR. When reaching NOVEMBER the aircraft will be instructed to join aerodrome traffic pattern accordingly
- c) Aircraft entering to land from south and southwest of Udon Thani Airport will report over Ban Dongrueng, designated as ROMEO (1709.5N 10258.0E) which is 16 NM on R-145 of UD VOR. When reaching ROMEO the aircraft will be instructed to join aerodrome traffic pattern accordingly

- d) Aircraft entering to land from west of Udon Thani Airport, will report over Ban Hua Khua (Hui Luang Reservoir) designated as HOTEL (1725.0N 10236.5E) which is 12 NM on R-280 of UD VOR. When reaching HOTEL the aircraft will be instructed to join aerodrome traffic pattern accordingly

1.2 Aerodrome traffic circuit.

Using both sides of traffic circuit

1.3 Overhead approach pattern.

- a) Using runway 12 by right turn pattern.
b) Using runway 30 by left turn pattern.

VTUD AD 2.21 NOISE ABATEMENT PROCEDURES

NIL

VTUD AD 2.22 FLIGHT PROCEDURES

NIL

VTUD AD 2.23 ADDITIONAL INFORMATION

1. MILITARY RADAR AND FACILITIES

- Royal Thai Air Force ASR/SSR facilities installed and operations details as follows:

Radio call sign : UDON Departure Control/ UDOM Arrival Control

DEP freq : 134.1 and 261.4 MHZ

ARR freq : 119.6, 298.0 and 382.4 MHZ

Conver range/height : ASR 70 NM/40 000 FT

: SSR 200 NM/100 000 FT

Hours of operations : Monday-Friday 0100-0900

Emission : ASR 500 KW, SSR 1.5 KW

Remarks : Available for Military.

- BAK 14 RAG installed at 427 M from threshold runway 12 and 30 cable height 3 inches.

- Net Barrier installed on both side of runway 12/30 at 15 M from threshold.

2. BIRD CONCENTRATIONS

- Bird concentrations in the vicinity of an aerodrome.

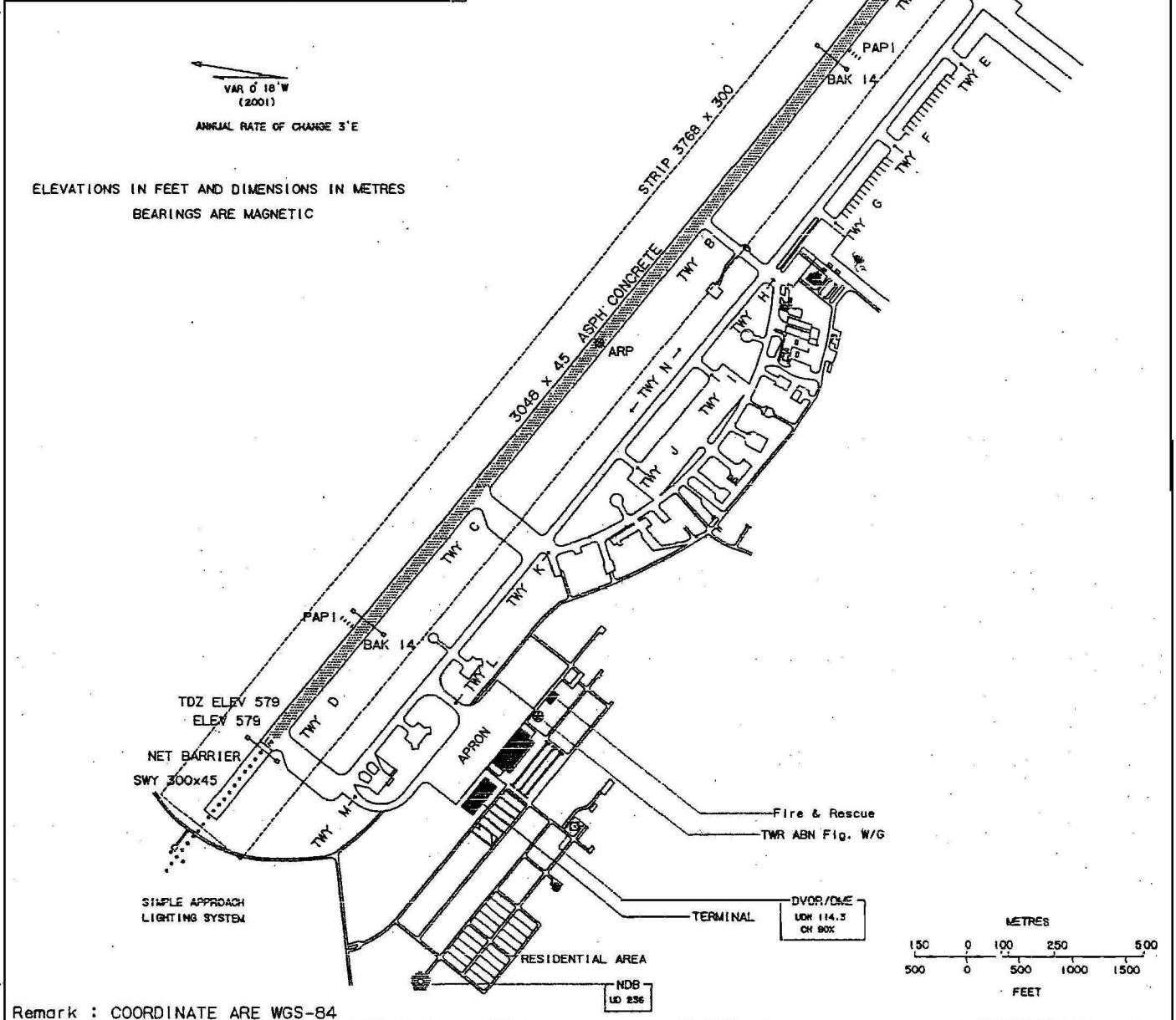
VTUD AD 2.24 CHARTS RELATED TO AN AERODROME

Chart name	Page
Aerodrome Chart - ICAO	AD 2-VTUD-2-1
Instrument Approach Chart - ICAO - NDB RWY 12	AD 2-VTUD-8-1
Instrument Approach Chart - ICAO - NDB RWY 12 (Fix and point list table)	AD 2-VTUD-8-2
Instrument Approach Chart - ICAO - NDB RWY 30	AD 2-VTUD-8-3
Instrument Approach Chart - ICAO - NDB RWY 30 (Fix and point list table)	AD 2-VTUD-8-4
Instrument Approach Chart - ICAO - VOR RWY 12	AD 2-VTUD-8-5
Instrument Approach Chart - ICAO - VOR RWY 12 (Fix and point list table)	AD 2-VTUD-8-6
Instrument Approach Chart - ICAO - VOR RWY 30	AD 2-VTUD-8-7
Instrument Approach Chart - ICAO - VOR RWY 30 (Fix and point list table)	AD 2-VTUD-8-8
Instrument Approach Chart - ICAO - ILS or LOC RWY 30	AD 2-VTUD-8-9
Instrument Approach Chart - ICAO - ILS or LOC RWY 30 (Fix and point list table)	AD 2-VTUD-8-10
Instrument Approach Chart - ICAO - RNAV (GNSS) RWY 12	AD 2-VTUD-8-11
Instrument Approach Chart - ICAO - RNAV (GNSS) RWY 12 (Tabular description)	AD 2-VTUD-8-12

Chart name	Page
Instrument Approach Chart - ICAO - RNAV (GNSS) RWY 30	AD 2-VTUD-8-13
Instrument Approach Chart - ICAO - RNAV (GNSS) RWY 30 (Tabular description)	AD 2-VTUD-8-14

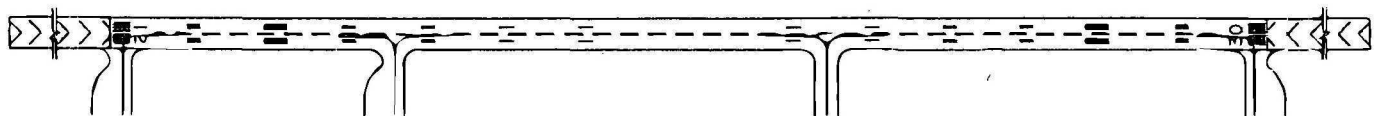
AERODROME CHART-ICAO 17° 23' 11" N ELEV 579 ft TWR 122.5 UDON THANI / Udon Thani
102° 47' 18" E 176 m 355.4

RWY	DIRECTION	THR	BEARING STRENGTH
12	118°	17° 23' 33.72" N 102° 46' 31.65" E	PCN 65/F/C/X/T
30	298°	17° 22' 48.62" N 102° 48' 03.73" E	
APRON			PCN 61/R/C/X/T

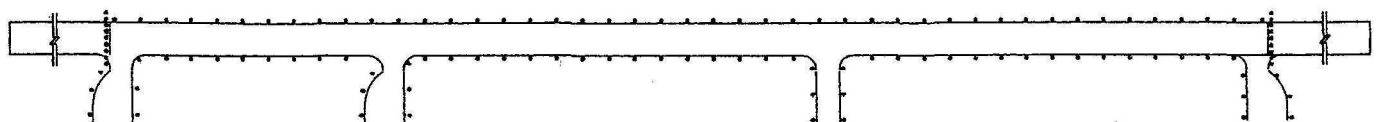


Remark : COORDINATE ARE WGS-84

MARKING AIDS RWY 12/30 AND EXIT TWY



LIGHTING AIDS RWY 12/30 AND EXIT TWY



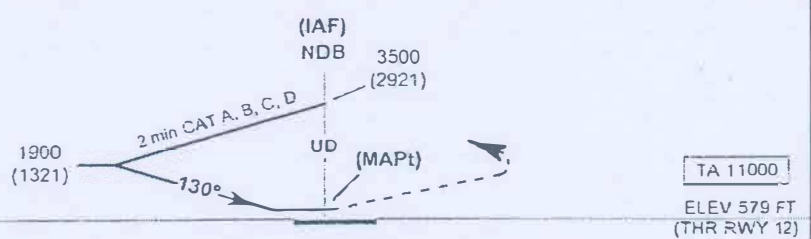
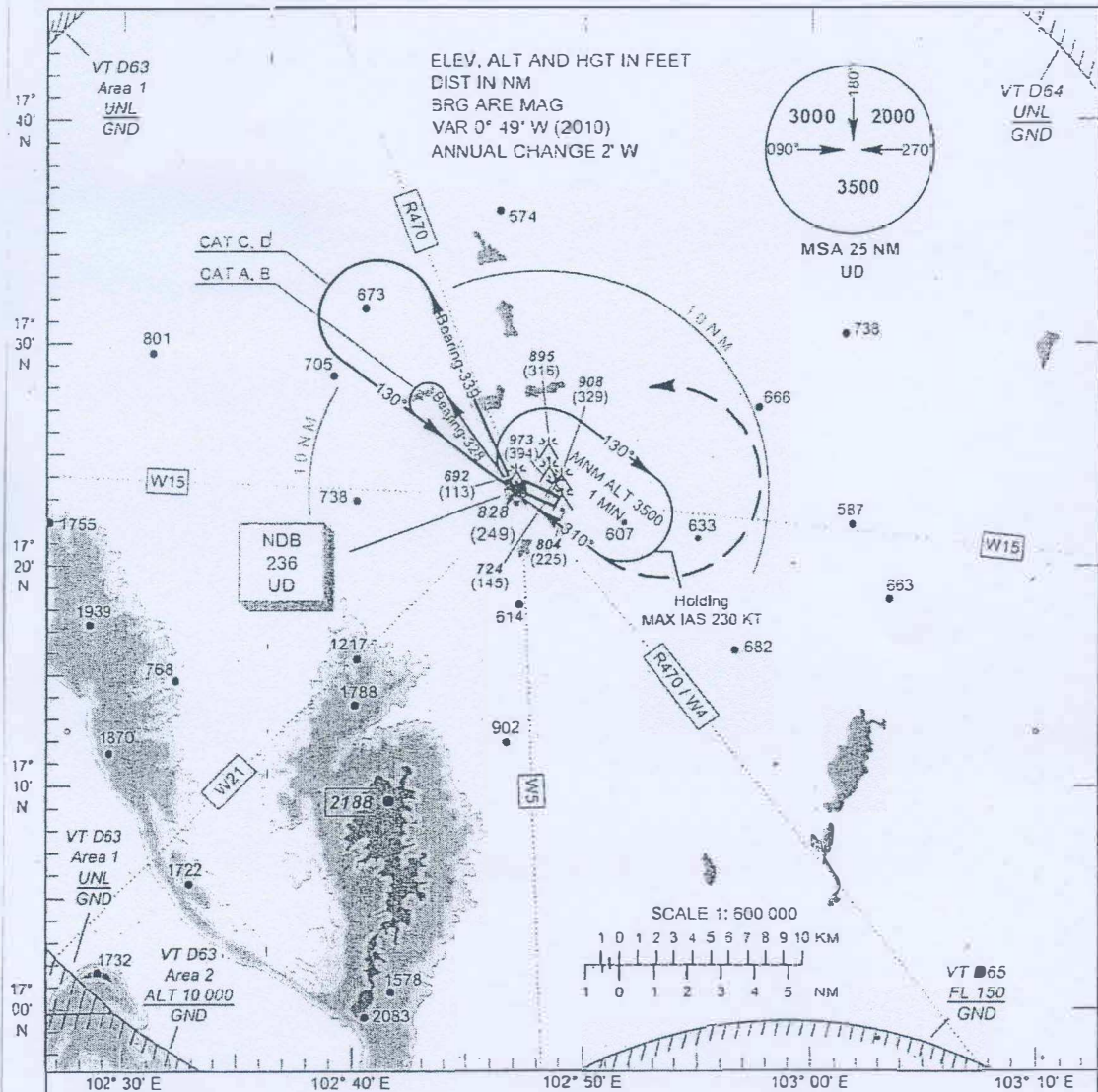
INTENTIONALLY BLANK

INSTRUMENT
APPROACH
CHART - ICAO

AERODROME ELEV 579 FT
HEIGHTS RELATED TO
AERODROME ELEV

APP : 126.2, 265.9
TWR : 122.5, 355.4
GND : 121.9, 275.8

UDON THANI / Udon thani (VTUD)
NDB RWY12



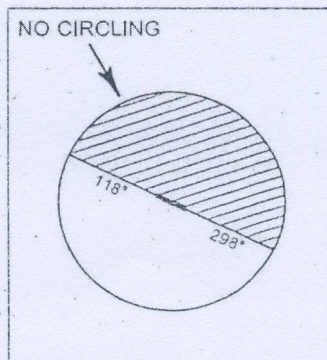
MISSED APPROACH: No turn before MAPt. Climb on Bearing-130 until 1900 (1121) FT then turn left to UD NDB at 3500 (2921) FT and hold or as directed by ATC.

OCA/H	A	B	C	D
Straight - in Approach	1130 (551)			
Circling* (OCH AAL)	1300 (721)			
*FOR CIRCLING RESTRICTIONS SEE VERSO				

UDON THANI / Udon thani (VTUD)

NDB RWY12

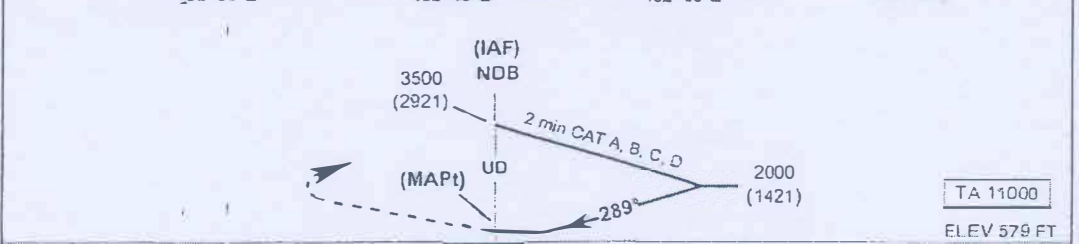
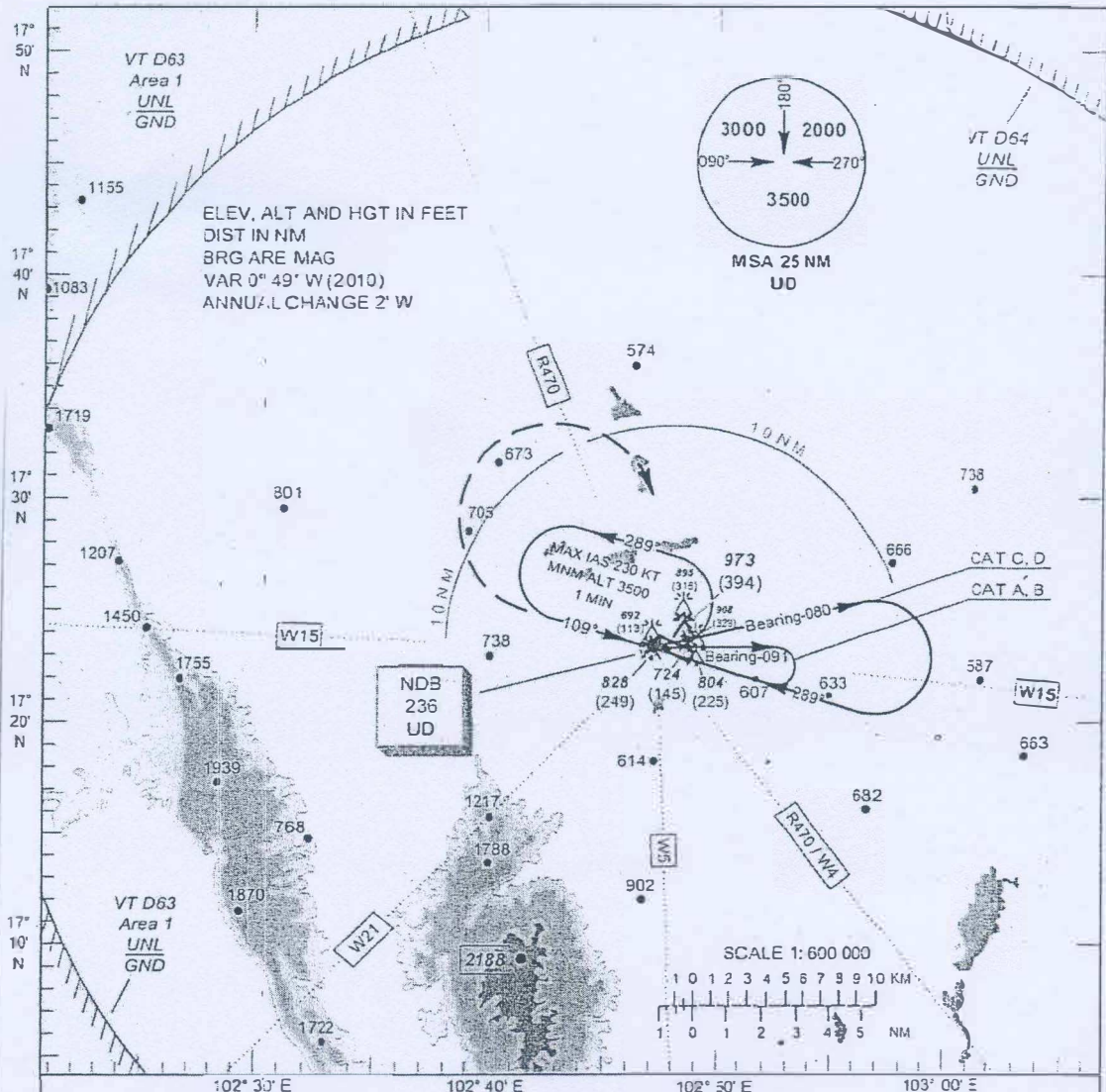
Fixes / Points		Coordinates	
MAPt	UD	17 23 16.16 N 17 23.27 N	102 46 11.54 E 102 46.19 E
THR RWY 12	-	17 23 33.72 N 17 23.56 N	102 46 31.68 E 102 46.53 E
NDB	UD	17 23 16.16 N 17 23.27 N	102 46 11.54 E 102 46.19 E



INSTRUMENT APPROACH CHART - ICAO
AERODROME ELEV 579 FT
HEIGHTS RELATED TO AERODROME ELEV

APP : 126.2 , 265.9
TWR : 122.5 , 355.4
GND : 121.9 , 275.6

UDON THANI / Udon thani (VTUD)
NDB RWY30



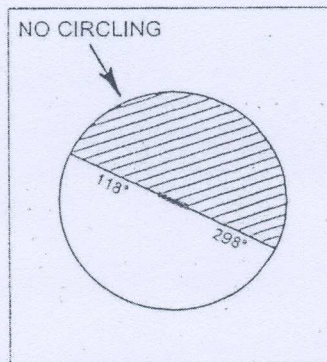
MISSED APPROACH: No turn before MAPt. Climb on Bearing-289 until 1900 (1321) FT then turn right to UD NDB at 3500 (2921) FT and hold or as directed by ATC.

OCA/H	A	B	C	D
Straight - in Approach		1230 (651)		
Circling* (OCH AAL)		1300 (721)		
*FOR CIRCLING RESTRICTIONS SEE VERSO				

UDON THANI / Udon thani (VTUD)

NDB RWY30

Fixes / Points		Coordinates	
MAPt	UD	17 23 16.16 N 17 23.27 N	102 46 11.54 E 102 46.19 E
THR RWY 30	-	17 22 48.60 N 17 22.81 N	102 48 03.80 E 102 48.06 E
NDB	UD	17 23 16.16 N 17 23.27 N	102 46 11.54 E 102 46.19 E

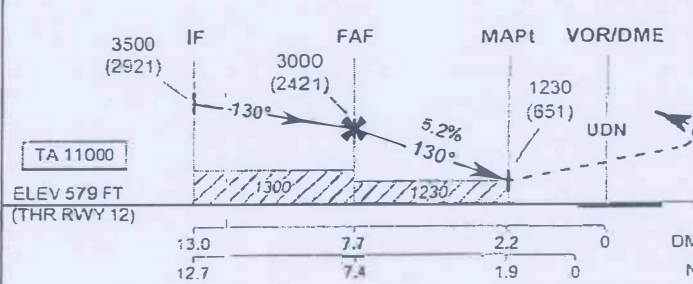
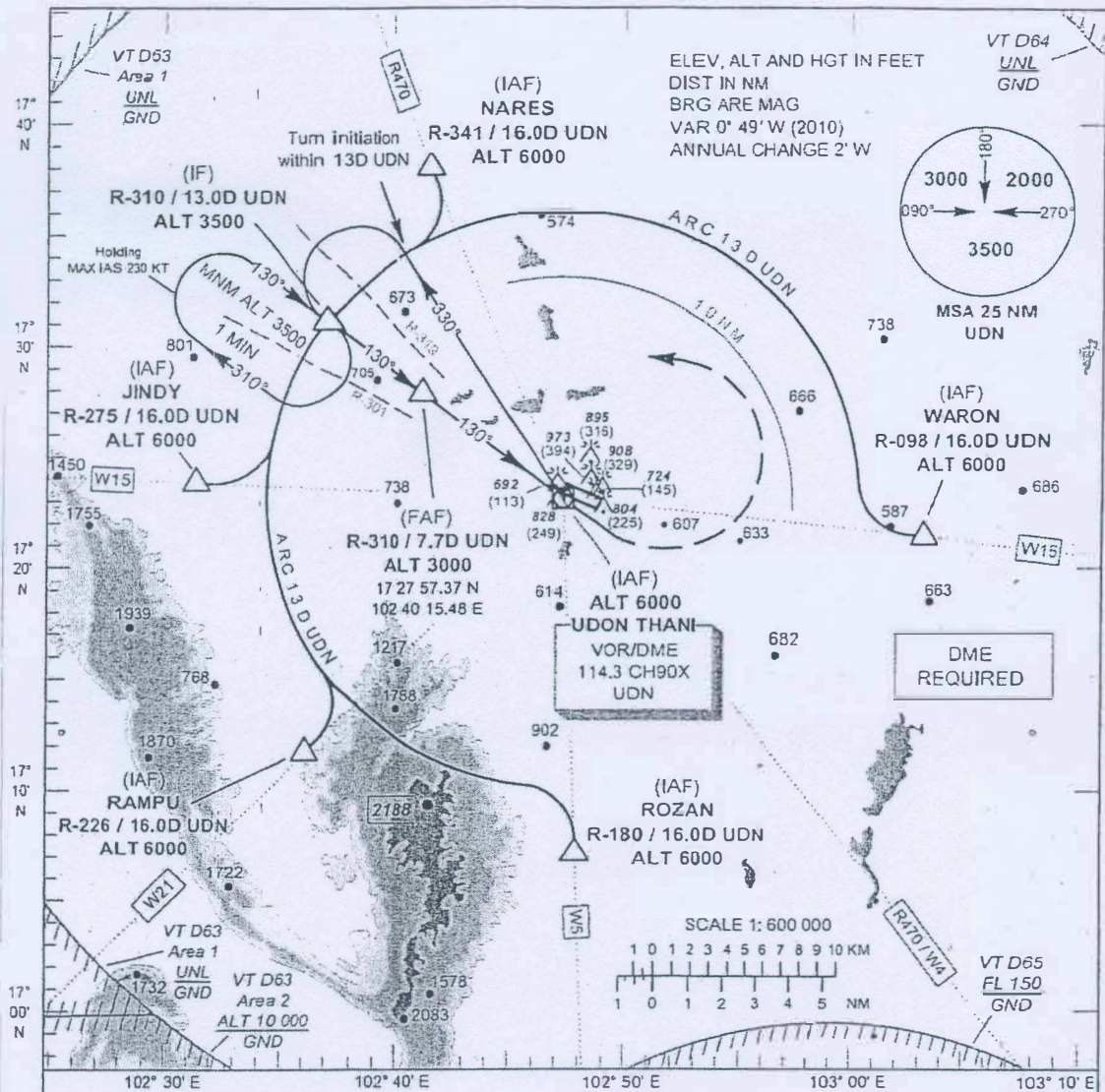


INSTRUMENT
APPROACH
CHART - ICAO

AERODROME ELEV 579 FT
HEIGHTS RELATED TO
AERODROME ELEV

APP : 126.2 , 265.9
TWR : 122.5 , 355.4
GND : 121.9 , 275.8

UDON THANI / Udon thani (VTUD)
VOR RWY12



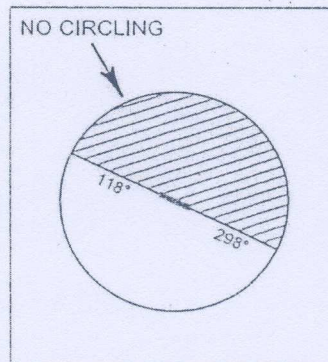
MISSED APPROACH:
No turn before MAPt.
Climb straight ahead to 1700 (1121) FT then turn left to IF at 3500 (2921) FT and hold or as directed by ATC.

OCA/H	A	B	C	D	Distance (UDN)	FAF	7 D	6 D	5 D	4 D	3 D	2,2 D
Straight - In Approach	1230 (651)				Altitude (Height)	3000 (2421)	2745 (2166)	2430 (1851)	2115 (1536)	1800 (1221)	1480 (901)	1230 (651)
	1300 (721)				Ground speed (GS)	knot	100	120	140	160	180	200
*FOR CIRCLING RESTRICTIONS SEE VERSO					Rate of descent	(ft/min)	530	630	740	845	950	1055

UDON THANI / Udon thani (VTUD)

VOR RWY12

Fixes / Points		Coordinates	
WARON (IAF)	R-098 / 16.0 D UDN	17 21 03.35 N 17 21.06 N	103 03 03.76 E 103 03.06 E
NARES (IAF)	R-341 / 16.0 D UDN	17 38 10.96 N 17 38.18 N	102 40 50.94 E 102 40.85 E
JINDY (IAF)	R-275 / 16.0 D UDN	17 24 06.35 N 17 24.11 N	102 29 49.40 E 102 29.82 E
RAMPU (IAF)	R-226 / 16.0 D UDN	17 11 51.25 N 17 11.85 N	102 34 34.57 E 102 34.58 E
ROZAN (IAF)	R-180 / 16.0 D UDN	17 07 02.91 N 17 07.05 N	102 46 43.24 E 102 46.72 E
IF	R-310 / 13.0 D UDN	17 31 18.42 N 17 31.31 N	102 35 57.62 E 102 35.96 E
FAF	R-310 / 7.7 D UDN	17 27 57.37 N 17 27.96 N	102 40 15.48 E 102 40.26 E
MAPt	R-310 / 2.2 D UDN	17 24 27.86 N 17 24.46 N	102 44 43.94 E 102 44.73 E
THR RWY 12		17 23 33.72 N 17 23.56 N	102 46 31.68 E 102 46.53 E
VOR (IAF)	UDN	17 23 05.17 N 17 23.09 N	102 46 29.81 E 102 46.50 E

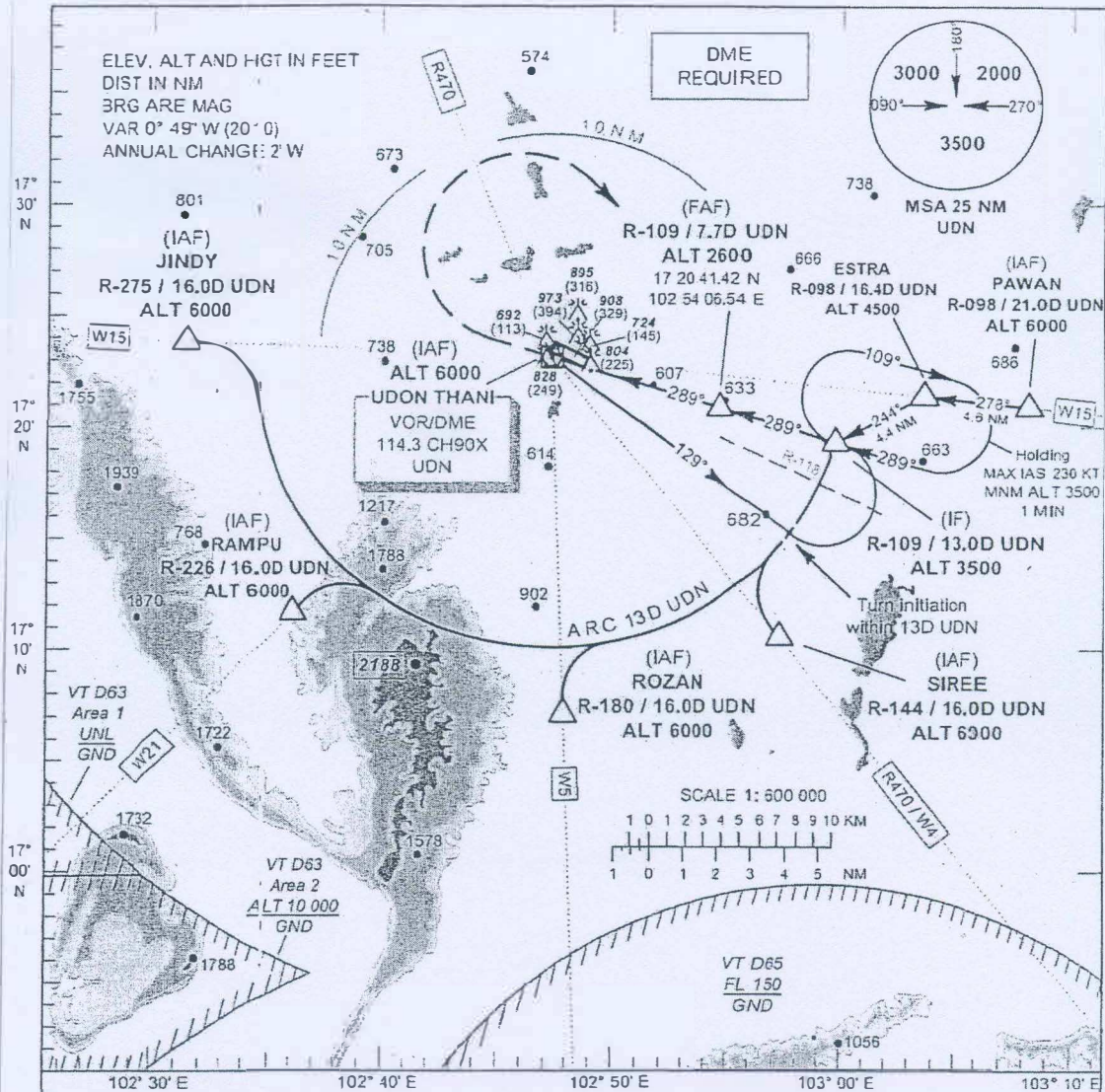


INSTRUMENT AERODROME ELEV 579 FT
APPROACH HEIGHTS RELATED TO
CHART - ICAO AERODROME ELEV

APP : 126.2 , 265.9
TWR : 122.5 , 355.4
GND : 121.9 , 275.8

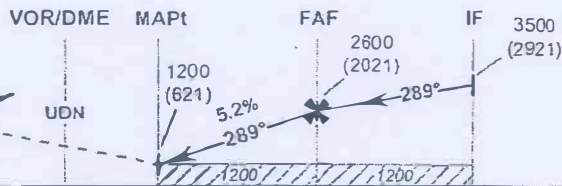
UDON THANI / Udon thani (VTUD)

VOR RWY30



MISSED APPROACH:

No turn before MAP
Climb straight ahead to 1900 (1321) FT then turn right to IF at 3500 (2921) FT and hold or as directed by ATC.



ELEV 579 FT
(THR RWY 30)

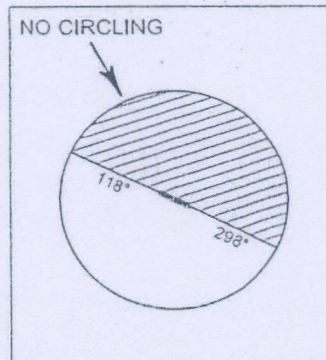
DME FM VOR	0	3.3	7.7	13.0
NM FM THR	0	1.8	6.2	11.5

OCAH	A	B	C	D	Distance (UDN)	3.3 D	4 D	5 D	6 D	7 D	FAF	
Straight - in Approach	1200 (621)				Altitude (Height)	1200 (621)	1420 (841)	1735 (1156)	2050 (1471)	2365 (1786)	2600 (2021)	
Circling* (OCH AAL)	1300 (721)				Ground speed (GS)	knot	100	120	140	160	180	200
*FOR CIRCLING RESTRICTIONS SEE VERSO					Rate of descent (ft/min)	530	630	740	845	950	1055	

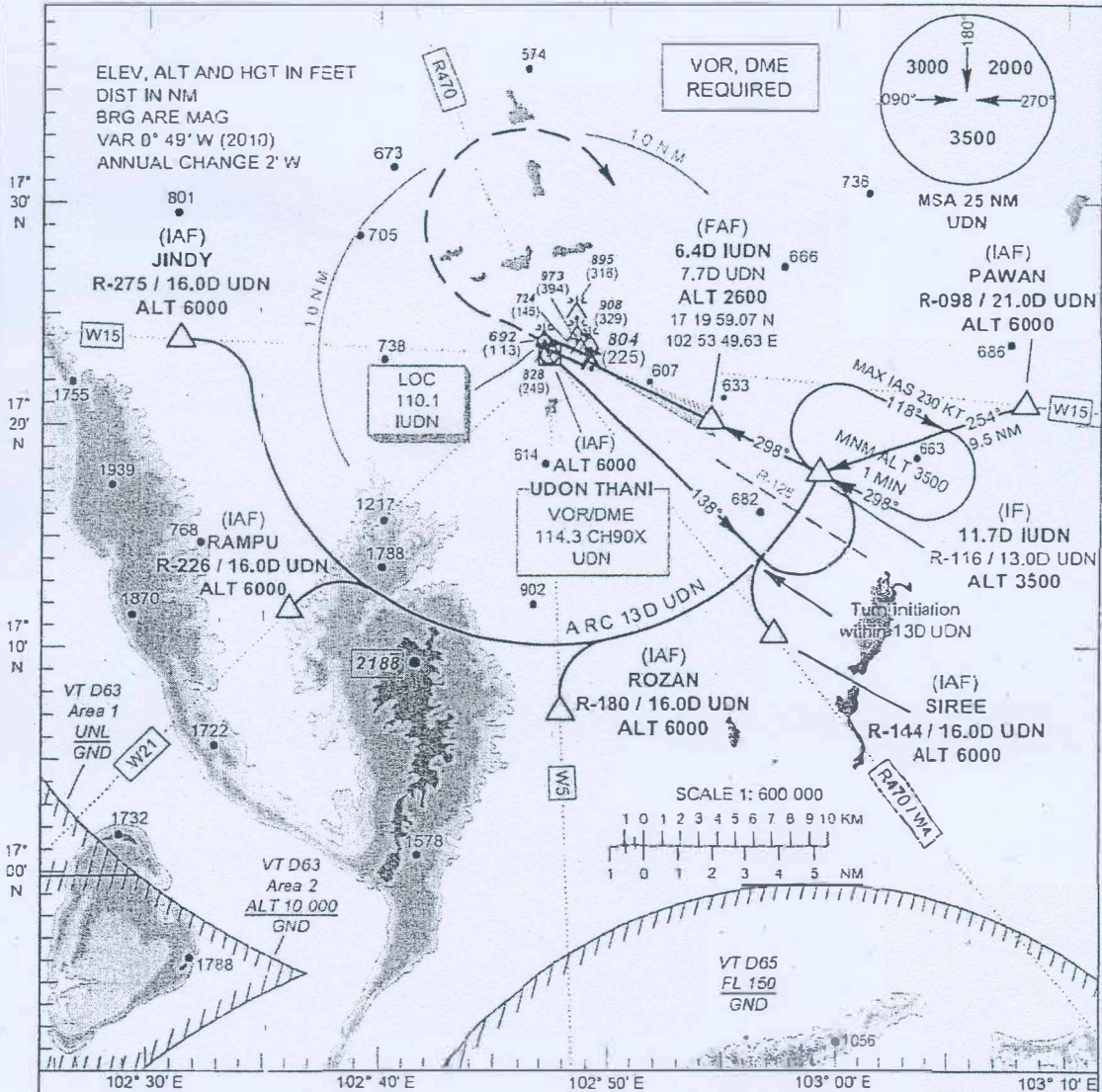
UDON THANI / Udon thani (VTUD)

VOR RWY30

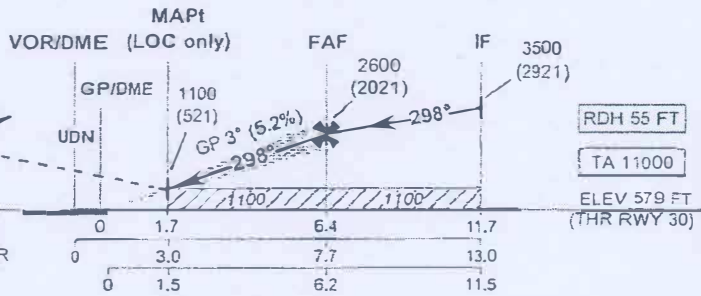
Fixes / Points		Coordinates	
PAWAN (IAF)	R-098 / 21.0 D UDN	17 20 25.01 N 17 20.42 N	103 08 14.23 E 103 08.24 E
ESTRA	R-098 / 16.4 D UDN	17 21 00.33 N 17 21.01 N	103 03 28.26 E 103 03.47 E
JINDY (IAF)	R-275 / 16.0 D UDN	17 24 06.35 N 17 24.11 N	102 29 49.40 E 102 29.82 E
RAMPU (IAF)	R-226 / 16.0 D UDN	17 11 51.25 N 17 11.85 N	102 34 34.57 E 102 34.58 E
ROZAN (IAF)	R-180 / 16.0 D UDN	17 07 02.91 N 17 07.05 N	102 46 43.24 E 102 46.72 E
SIREE (IAF)	R-144 / 16.0 D UDN	17 10 19.06 N 17 10.32 N	102 56 35.86 E 102 56.60 E
IF	R-109 / 13.0 D UDN	17 19 01.51 N 17 19.03 N	102 59 23.35 E 102 59.39 E
FAF	R-109 / 7.7 D UDN	17 20 41.42 N 17 20.69 N	102 54 06.54 E 102 54.11 E
MAPt	R-109 / 3.3 D UDN	17 22 03.03 N 17 22.05 N	102 49 47.37 E 102 49.79 E
THR RWY 30		17 22 48.60 N 17 22.81 N	102 48 03.80 E 102 48.06 E
VOR (IAF)	UDN	17 23 05.17 N 17 23.09 N	102 46 29.81 E 102 46.50 E



INSTRUMENT APPROACH CHART - ICAO
 AERODROME ELEV 579 FT
 HEIGHTS RELATED TO THR RWY 30 - ELEV 579 FT
 APP : 126.2, 265.9
 TWR : 122.5, 355.4
 GND : 121.9, 275.8
 UDON THANI / Udon thani (VTUD)
 ILS or LOC RWY30



MISSED APPROACH:
 No turn before MAPt
 Climb straight ahead to 1900 (1321) FT then turn right to IF at 3500 (2921) FT and hold or as directed by ATC.



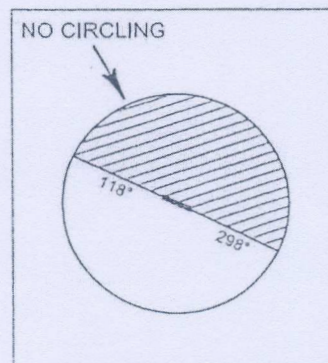
OCA/H	A	B	C	D	Distance (IUDN)	1.7 D	2 D	3 D	4 D	5 D	6 D	FAF	
Straight-in Approach	CAT I	840 (261)	850 (271)	860 (281)	870 (291)	1100 (521)	1205 (626)	1525 (946)	1845 (1266)	2160 (1581)	2480 (1901)	2600 (2021)	
LOC only		1100 (521)				Ground speed (GS)	knot	100	120	140	160	180	200
Circling* (OCH AAL)		1300 (721)				Rate of descent (ft/min)		530	630	740	845	950	1055

*FOR CIRCLING RESTRICTIONS SEE VERSO

UDON THANI / Udon thani (VTUD)

ILS or LOC RWY30

Fixes / Points		Coordinates	
PAWAN (IAF)	R-098 / 21.0 D UDN	17 20 25.01 N 17 20.42 N	103 08 14.23 E 103 08.24 E
JINDY (IAF)	R-275 / 16.0 D UDN	17 24 06.35 N 17 24.11 N	102 29 49.40 E 102 29.82 E
RAMPU (IAF)	R-226 / 16.0 D UDN	17 11 51.25 N 17 11.85 N	102 34 34.57 E 102 34.58 E
ROZAN (IAF)	R-180 / 16.0 D UDN	17 07 02.91 N 17 07.05 N	102 46 43.24 E 102 46.72 E
SIREE (IAF)	R-144 / 16.0 D UDN	17 10 19.06 N 17 10.32 N	102 56 35.86 E 102 56.60 E
IF	11.7 D IUDN	17 17 33.20 N 17 17.55 N	102 58 46.32 E 102 58.78 E
FAF	6.4 D IUDN	17 19 59.07 N 17 19.98 N	102 53 49.63 E 102 53.83 E
MAPt (LOC only)	1.7 D IUDN	17 22 08.23 N 17 22.14 N	102 49 26.09 E 102 49.43 E
THR RWY 30	-	17 22 48.60 N 17 22.81 N	102 48 03.80 E 102 48.06 E
LOC ^o	IUDN	17 23 41.15 N 17 23.69 N	102 46 16.49 E 102 46.27 E
VOR (IAF)	UDN	17 23 05.17 N 17 23.09 N	102 46 29.81 E 102 46.50 E



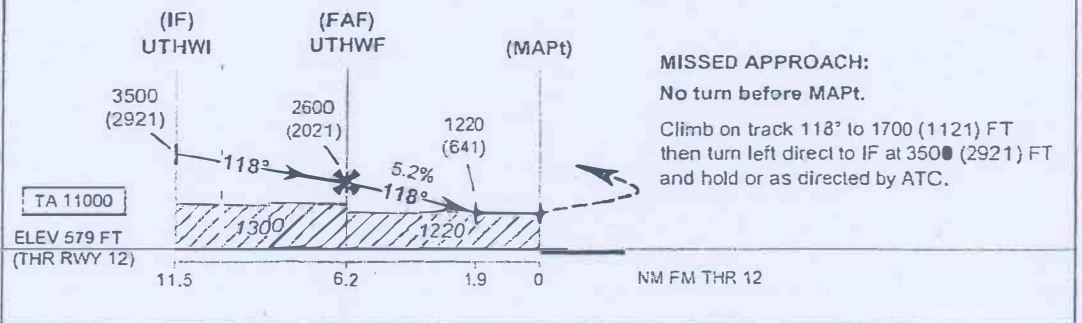
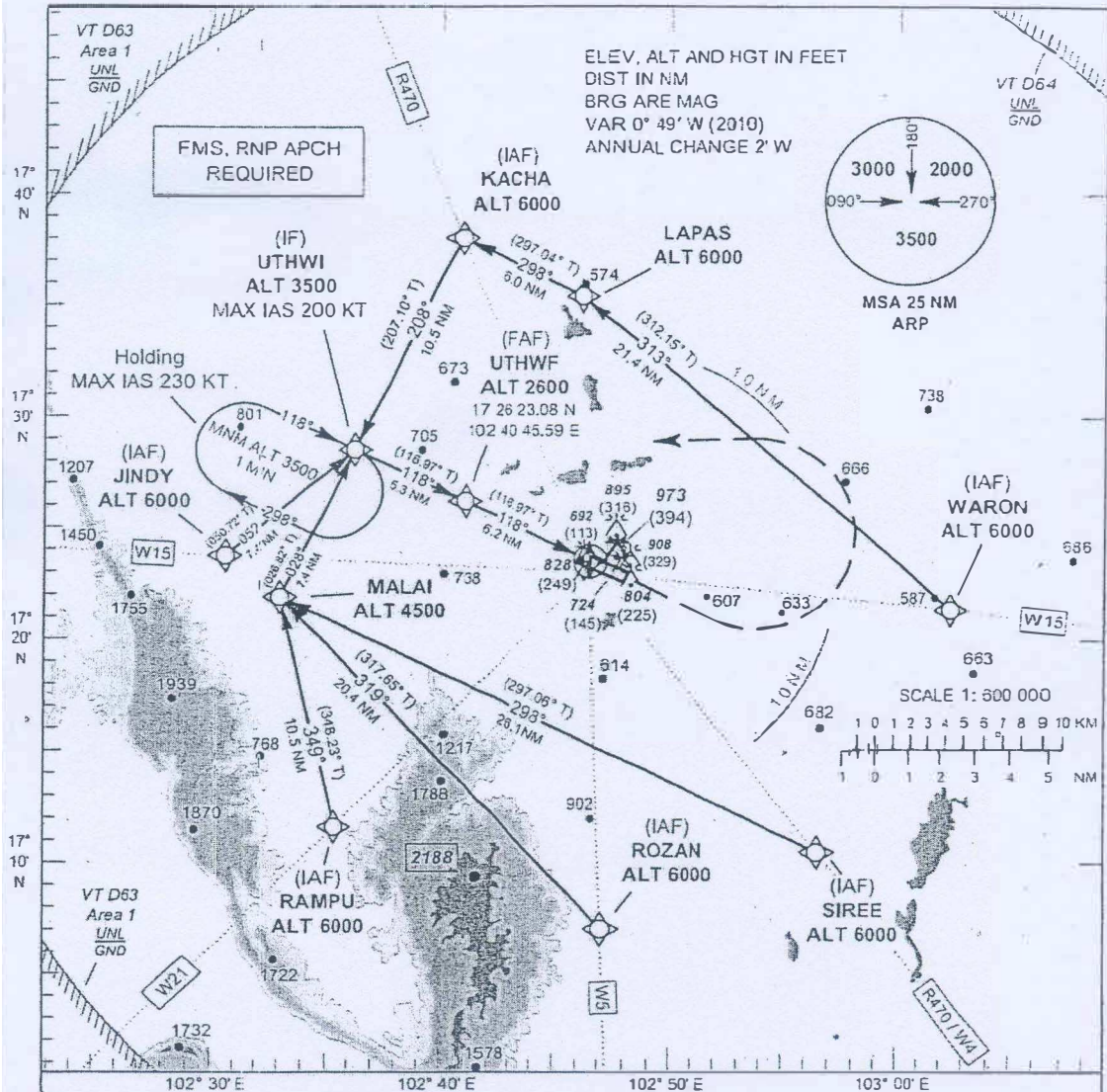
INSTRUMENT
APPROACH
CHART - ICAO

AERODROME ELEV 579 FT
HEIGHTS RELATED TO
AERODROME ELEV

APP : 126.2, 265.9
TWR : 122.5, 355.4
GND : 121.9, 275.8

UDON THANI / Udon thani (VTUD)

RNAV (GNSS) RWY12

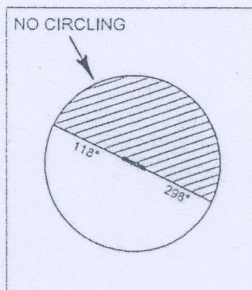


OCA/H	A	B	C	D	NM to THR 12	FAF	6 NM	5 NM	4 NM	3 NM	2 NM	1.9 NM
LNAV	1220 (641)				Altitude (Height)	2600 (2021)	2525 (1946)	2210 (1631)	1895 (1316)	1575 (996)	1260 (681)	1220 (641)
Circling* (OCH AAL)	1300 (721)				Ground speed (GS)	knot	100	120	140	160	180	200
*FOR CIRCLING RESTRICTIONS SEE VERSO					Rate of descent	(ft/min)	530	630	740	845	950	1055

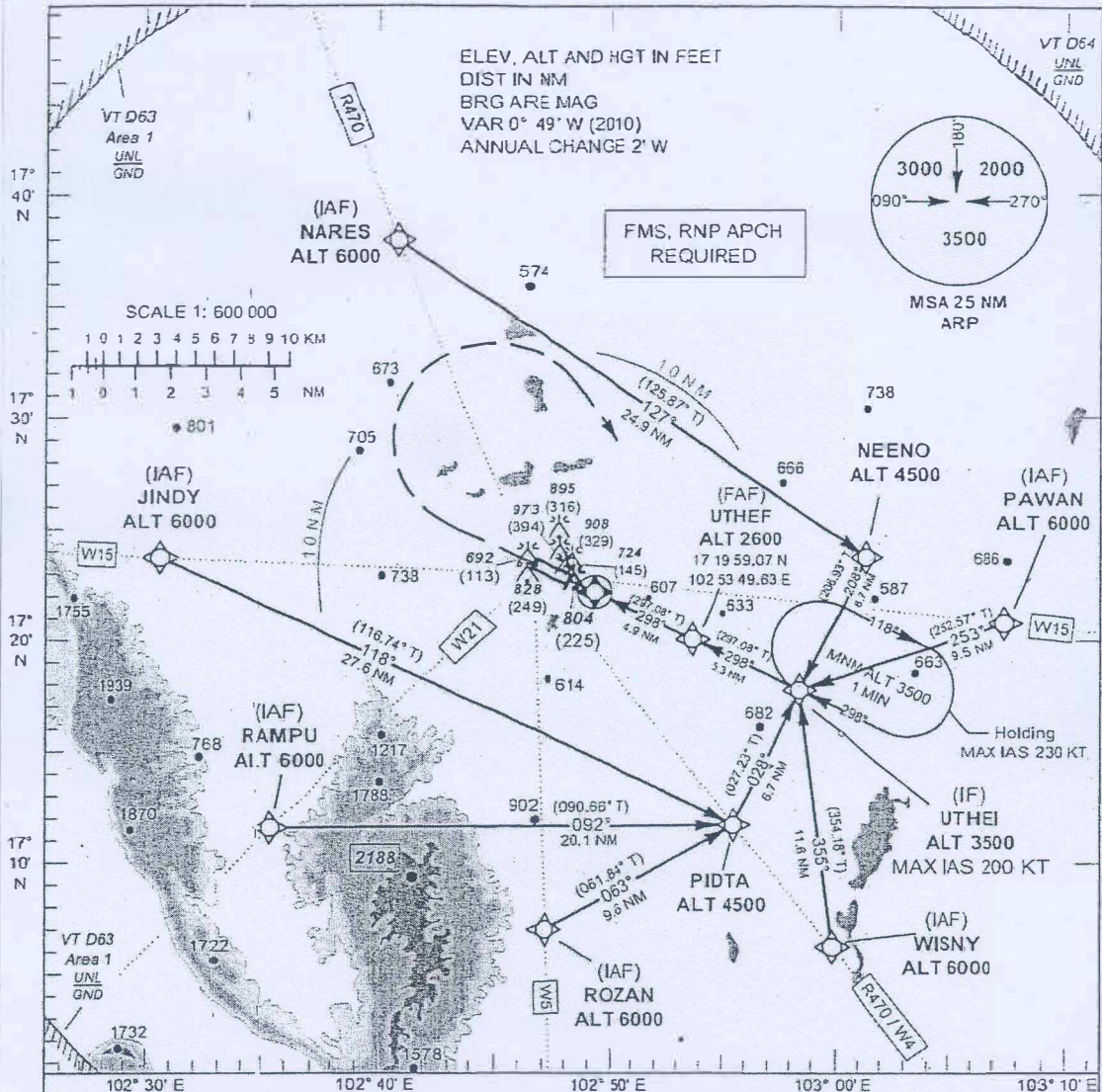
UDON THANI / Udon thani (VTUD)

RNAV (GNSS) RWY12

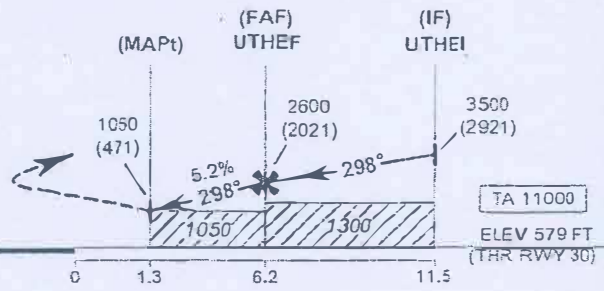
Fix identifier (Waypoint name)	WGS-84 Coordinates		Path descriptor	Flyover	Course ° M (° T)	Turn direction	Altitude	Speed limit	Magnetic variation	Navigation performance
	Latitude	Longitude								
WARON (IAF)	17 21 03.35 N	103 03 03.76 E	IF	-	313°(312.15°)	-	6000	-	0.3	RNP1
LAPAS	17 35 29.55 N	102 46 25.24 E	TF	-	298°(297.04°)	L	6000	-	0.3	RNP1
KACHA (IAF)	17 38 13.51 N	102 40 49.98 E	IF / TF	-	208°(207.10°)	L, R	5000	-	0.3	RNP1
JINDY (IAF)	17 24 06.35 N	102 29 49.40 E	IF	-	052°(050.72°)	-	6000	-	0.3	RNP1
RAMPU (IAF)	17 11 51.25 N	102 34 34.57 E	IF	-	349°(348.23°)	-	6000	-	0.3	RNP1
ROZAN (IAF)	17 07 02.91 N	102 46 43.24 E	IF	-	319°(317.65°)	-	6000	-	0.3	RNP1
SIREE (IAF)	17 10 19.06 N	102 56 35.86 E	IF	-	298°(297.06°)	-	6000	-	0.3	RNP1
MALAI	17 22 11.96 N	102 32 19.85 E	TF	-	028°(026.82°)	R	4500	-	0.3	RNP1
UTHWI (IF)	17 28 48.20 N	102 35 48.60 E	TF	-	118°(116.97°)	L, R	3500	200	0.3	RNP1
UTHWF (FAF)	17 26 23.34 N	102 40 45.05 E	TF	-	118°(116.97°)	-	2600	-	0.3	RNP0.3
MAPt (THR12)	17 23 33.72 N	102 46 31.68 E	-	Y	-	-	1220	-	0.3	RNP0.3
			CA	-	298°(297.08°)	L	1700	-	0.3	RNP1
UTHWI (F)	17 28 48.20 N	102 35 48.60 E	DF	-	-	-	3500	230	0.3	RNP1
UTHWI (F)	17 28 48.20 N	102 35 48.60 E	HM	-	298°(297.08°)	R	3500	230	0.3	RNP1



INSTRUMENT APPROACH CHART - ICAO
 AERODROME ELEV 579 FT
 HEIGHTS RELATED TO AERODROME ELEV
 APP : 126.2, 265.9
 TWR : 122.5, 355.4
 GND : 121.9, 275.8
 UDON THANI / Udon thani (VTUD)
 RNAV (GNSS) RWY30



MISSED APPROACH:
 No turn before MAPt.
 Climb on track 298° to 1900 (1321) FT then turn right direct to IF at 3500 (2921) FT and hold or as directed by ATC.



OCA/H	A	B	C	D	NM to THR 30	1.3 NM	2 NM	3 NM	4 NM	5 NM	6 NM	FAF
LNAV	1050 (471)				Altitude (Height)	1050 (471)	1260 (681)	1575 (996)	1895 (1316)	2210 (1631)	2525 (1946)	2600 (2021)
Circling* (OCH AAL)	1300 (721)				Ground speed (GS)	knot	100	120	140	160	180	200
*FOR CIRCLING RESTRICTIONS SEE VERSO					Rate of descent	(ft/min)	530	630	740	845	950	1055

UDON THANI / Udon thani (VTUD)

RNAV (GNSS) RWY30

Fix identifier (Waypoint name)	WGS-84 Coordinates		Path descriptor	Flyover	Course °M (°T)	Turn direction	Altitude	Speed limit	Magnetic variation	Navigation performance
	Latitude	Longitude								
NARES (IAF)	17 38 10.96 N	102 40 50.94 E	F	-	127°(125.87°)	-	6000	-	0.8	RNP1
NEENO	17 23 31.75 N	103 01 55.60 E	TF	-	208°(206.93°)	R	4500	-	0.8	RNP1
PAWAN (IAF)	17 20 25.01 N	103 08 14.23 E	F	-	253°(252.57°)	-	6000	-	0.8	RNP1
JINDY (IAF)	17 24 06.35 N	102 29 49.40 E	F	-	118°(116.74°)	-	6000	-	0.8	RNP1
RAMPU (IAF)	17 11 51.25N	102 34 34.57 E	F	-	092°(090.66°)	-	6000	-	0.8	RNP1
ROZAN (IAF)	17 07 02.91 N	102 46 43.24 E	F	-	063°(061.84°)	-	6000	-	0.8	RNP1
PIDTA	17 11 36.26 N	102 55 34.85 E	TF	-	028°(027.23°)	L	4500	-	0.8	RNP1
WISNY (IAF)	17 06 01.02 N	102 59 59.64 E	F	-	355°(354.18°)	-	6000	-	0.8	RNP1
UTHEI (F)	17 17 33.50 N	102 58 46.20 E	TF	-	298°(297.08°)	L, R	3500	200	0.8	RNP1
UTHEF (FAF)	17 19 58.79 N	102 53 50.21 E	TF	-	298°(297.08°)	-	2600	-	0.8	RNP0.3
MAPt 1.3 NM fm THR30	17 22 12.12 N	102 49 18.27 E	-	Y	-	-	1050	-	0.8	RNP0.3
			CA	-	298°(297.08°)	R	1900	-	0.8	RNP1
UTHEI (F)	17 17 33.50 N	102 58 46.20 E	DF	-	-	-	3500	230	0.8	RNP1
UTHEI (F)	17 17 33.50 N	102 58 46.20 E	HM	⊙	298°(297.08°)	R	3500	230	0.8	RNP1

