

## VTSK AD 2.1 AERODROME LOCATION INDICATOR AND NAME

## VTSK - PATTANI / PATTANI AIRPORT

## VTSK AD 2.2 AERODROME GEOGRAPHICAL AND ADMINISTRATIVE DATA

1	ARP coordinates and site at AD	064708.55N 1010913.09E
2	Direction and distance from (city)	16 KM S, from city
3	Elevation/Reference temperature	8 FT/35°C
4	Geoid Undulation at AD ELEV PSN	NIL
5	MAG VAR/Annual change	0.14°W (2016)/0°0'E
6	AD Administration, address, telephone, telefax, telex, AFS	Air Task Force 9, Royal Thai Air Force Pattani Airport Amphoe Nongjig Pattani Province 94170 Thailand Tel: +667 343 1190 +667 343 7023 Fax: +667 343 1195 AFS: VTSKYDYX
7	Types of traffic permitted (IFR/VFR)	IFR/VFR
8	Remarks	Operator: Department of Airports

## VTSK AD 2.3 OPERATIONAL HOURS

1	Aerodrome Operator	HJ
2	Customs and immigration	On request
3	Health and sanitation	On request
4	AIS Briefing Office	HJ
5	ATS Reporting Office (ARO)	NIL
6	MET Briefing Office	NIL
7	ATS	2300-1100, outside this period 1 HR PN to Pattani Tower
8	Fuelling	NIL
9	Handling	NIL
10	Security	NIL
11	De-icing	NIL
12	Remarks	NIL

## VTSK AD 2.4 HANDLING SERVICES AND FACILITIES

1	Cargo-handling facilities	NIL
2	Fuel/oil types	NIL
3	Fuelling facilities/capacity	NIL
4	De-icing facilities	NIL
5	Hangar space for visiting aircraft	NIL
6	Repair facilities for visiting aircraft	NIL
7	Remarks	NIL

**VTSK AD 2.5 PASSENGER FACILITIES**

1	Hotels	In the city
2	Restaurants	In the city
3	Transportation	Taxi
4	Medical facilities	NIL
5	Bank and Post Office	NIL
6	Tourist Office	NIL
7	Remarks	NIL

**VTSK AD 2.6 RESCUE AND FIRE FIGHTING SERVICES**

1	AD category for fire fighting	NIL
2	Rescue equipment	Yes
3	Capability for removal of disabled aircraft	NIL
4	Remarks	NIL

**VTSK AD 2.7 SEASONAL AVAILABILITY - CLEARING**

1	Types of clearing equipment	NIL
2	Clearance priorities	NIL
3	Remarks	The aerodrome is available all seasons

**VTSK AD 2.8 APRONS, TAXIWAYS AND CHECK LOCATIONS/POSITIONS DATA**

1	Apron surface and strength	Surface: Concrete and asphalt Strength: PCN 27/F/A/Y/T
2	Taxiway width, surface and strength	Width: 20 M Surface: Concrete and asphalt Strength: PCN 27/F/A/Y/T
3	Altimeter checkpoint location and elevation	NIL
4	VOR checkpoints	NIL
5	INS checkpoints	NIL
6	Remarks	NIL

**VTSK AD 2.9 SURFACE MOVEMENT GUIDANCE AND CONTROL SYSTEM AND MARKINGS**

1	Use of aircraft stand ID signs, TWY guide lines and visual docking/parking guidance system of aircraft stands	NIL
2	RWY and TWY markings and LGT	RWY and TWY: Markings and lighted
3	Stop bars	NIL
4	Remarks	NIL

VTSK AD 2.10 AERODROME OBSTACLES

In approach/TKOF areas			In circling areas and at AD		Remarks
1			2		3
RWY/Area affected	Obstacle type Elevation Markings/LGT	Coordinates	Obstacle type Elevation Markings/LGT	Coordinates	
a	b	c	a	b	
-	Radio mast HGT 30 M painted red/white LGTD on top	073500N 0993700E	NIL	NIL	NIL
Final RWY 08 (Right side)	Cell phone antenna HGT 148 FT AGL Dist 1,300 M to THR	064700N 1010810E			

VTSK AD 2.11 METEOROLOGICAL INFORMATION PROVIDED

1	Associated MET Office	NIL
2	Hours of service MET Office outside hours	NIL
3	Office responsible for TAF preparation Periods of validity	supply TAF from Southern (East coast) Regional Met. Center
4	Type of landing forecast Interval of issuance	supply TAF from Southern (East coast) Regional Met. Center
5	Briefing/consultation provided	No
6	Flight documentation Language(s) used	NIL
7	Charts and other information available for briefing or consultation	Daily Weather Forecast
8	Supplementary equipment available for providing information	NIL
9	ATS units provided with information	NIL
10	Additional information (limitation of service, etc.)	IP system

VTSK AD 2.12 RUNWAY PHYSICAL CHARACTERISTICS

Designations RWY NR	TRUE BRG	Dimensions of RWY(M)	Strength (PCN) and surface of RWY and SWY	THR coordinates RWY end coordinates THR geoid undulation	THR elevation and highest elevation of TDZ of precision APP RWY
1	2	3	4	5	6
08	085.05°	1400x40	PCN 27/F/A/Y/T Concrete and asphalt	064706.12N 1010850.08E	THR 7 FT TDZ 7 FT
26	265.05°	1400x40	PCN 27/F/A/Y/T Concrete and asphalt	064709.17N 1010935.62E	THR 8 FT TDZ 8 FT

Slope of RWY-SWY	SWY dimensions (M)	CWY dimensions (M)	Strip dimensions (M)	OFZ	Remarks
7	8	9	10	11	12
NIL	30x55	NIL	1700x300	NIL	NIL
NIL	150x55	NIL	1700x300	NIL	NIL

**VTSK AD 2.13 DECLARED DISTANCES**

RWY Designator	TORA (M)	TODA (M)	ASDA (M)	LDA (M)	Remarks
1	2	3	4	5	6
08	1400	1400	1430	1400	NIL
26	1400	1400	1550	1400	NIL

**VTSK AD 2.14 APPROACH AND RUNWAY LIGHTING**

RWY Designator	APCH LGT type LEN INTST	THR LGT colour WBAR	VASIS (MEHT) PAPI	TDZ, LGT LEN	RWY Centre Line LGT Length, spacing, colour, INTST	RWY edge LGT LEN, spacing, colour INTST	RWY End LGT colour WBAR	SWY LGT LEN (M) colour	Remarks
1	2	3	4	5	6	7	8	9	10
08	NIL	NIL	NIL	NIL	NIL	NIL	NIL	NIL	NIL
26	NIL	NIL	NIL	NIL	NIL	NIL	NIL	NIL	NIL

**VTSK AD 2.15 OTHER LIGHTING, SECONDARY POWER SUPPLY**

1	ABN/IBN location, characteristics and hours of operation	ABN: At Tower Building, FLG WG EV 7 SEC
2	LDI location and LGT Anemometer location and LGT	NIL
3	TWY edge and centre line lighting	NIL
4	Secondary power supply/switch-over time	Secondary power supply to ABN at the airport.
5	Remarks	Flares 2 HR PN

**VTSK AD 2.16 HELICOPTER LANDING AREA**

1	Coordinates TLOF or THR of FATO Geoid undulation	NIL
2	TLOF and/or FATO elevation M/FT	NIL
3	TLOF and FATO area dimensions, surface, strength, marking	NIL
4	True and MAG BRG of FATO	NIL
5	Declared distance available	NIL
6	APP and FATO lighting	NIL
7	Remarks	NIL

## VTSK AD 2.17 ATS AIRSPACE

1	Designation and lateral limits	A circle of 5 NM radius centred on Pattani NDB (064718.45N 1010852.51E)
2	Vertical limits	2000 FT/AGL
3	Airspace classification	C
4	ATS unit call sign Language(s)	Pattani Tower English, Thai
5	Transition altitude	11000 FT
6	Remarks	NIL

## VTSK AD 2.18 ATS COMMUNICATION FACILITIES

Service designation	Call sign	Frequency	Hours of operation	Remarks
1	2	3	4	5
APP	Pattani Approach	126.0 MHZ	**23:30-11:30	* Emergency Freq
TWR	Pattani Tower	*121.5 MHZ 236.6 MHZ	23:00-11:00, outside this period 1 HR PN to Pattani Tower via AFTN: VTSKZTZX or FAX +667 334 0130	** Outside this period and Holiday 1 HR PN to ATC

## VTSK AD 2.19 RADIO NAVIGATION AND LANDING AIDS

Type of aid, MAG VAR CAT of ILS/MLS (For VOR/ILS/MLS, give declination)	ID	Frequency	Hours of operation	Position of transmitting antenna coordinates	Elevation of DME transmitting antenna	Remarks
1	2	3	4	5	6	7
NDB	PT	201 KHZ	H24	064718.45N 1010852.51E	NIL	Output 50 watts

## VTSK AD 2.20 LOCAL AERODROME REGULATIONS

NIL

## VTSK AD 2.21 NOISE ABATEMENT PROCEDURES

NIL

## VTSK AD 2.22 FLIGHT PROCEDURES

NIL

## VTSK AD 2.23 ADDITIONAL INFORMATION

NIL

## VTSK AD 2.24 CHARTS RELATED TO AN AERODROME

Chart name	Page
Aerodrome Chart - ICAO	AD 2-VTSK-2-1
Instrument Approach Chart - ICAO - NDB RWY 08 CAT A, B	AD 2-VTSK-8-1
Instrument Approach Chart - ICAO - NDB RWY 26 CAT A, B	AD 2-VTSK-8-3
Instrument Approach Chart - ICAO - RNAV (GNSS) RWY 08 CAT A, B	AD 2-VTSK-8-5
Instrument Approach Chart - ICAO - RNAV (GNSS) RWY 08 CAT A, B (Tabular description)	AD 2-VTSK-8-6
Instrument Approach Chart - ICAO - RNAV (GNSS) RWY 26 CAT A, B	AD 2-VTSK-8-7

---

**Chart name**

**Page**

---

Instrument Approach Chart - ICAO - RNAV (GNSS) RWY 26 CAT A, B (Tabular description)

AD 2-VTSK-8-8

AERODROME CHART-ICAO

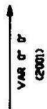
06° 47' 08" N  
101° 09' 13" E

ELEV 8 ft  
2 m

TWR 119.3  
236.8

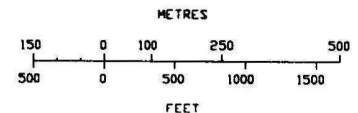
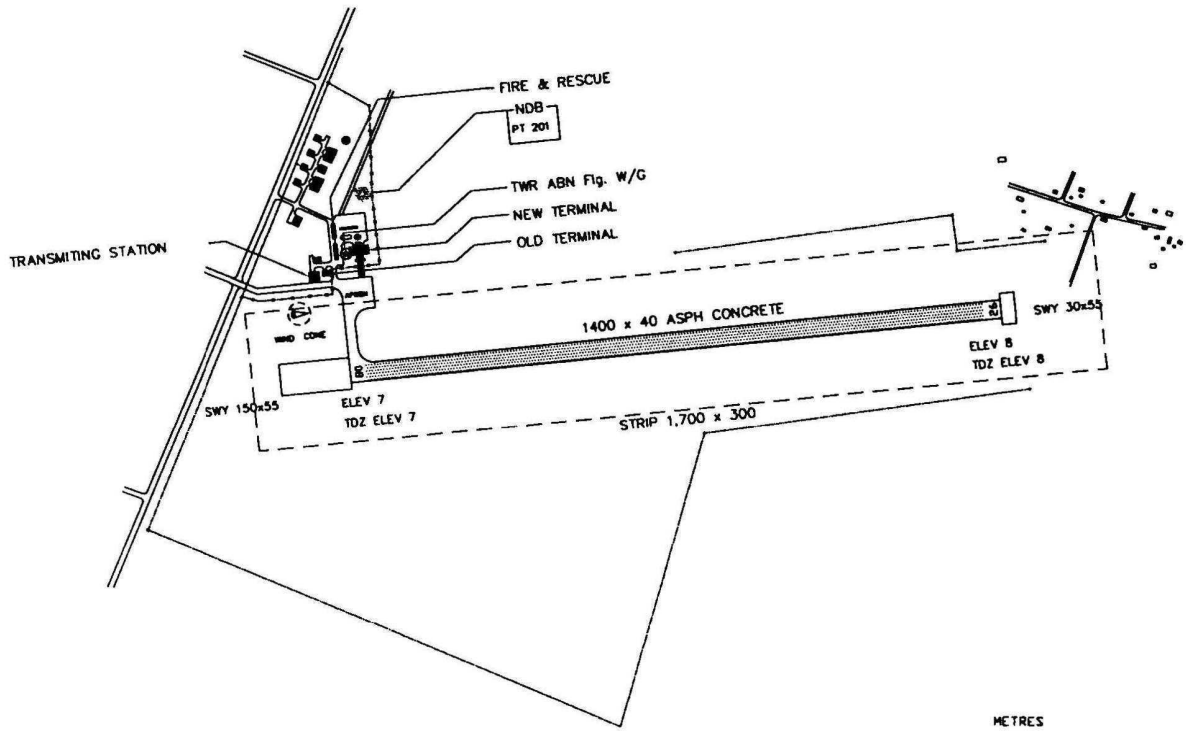
PATTANI/Pattani

RWY	DIRECTION	THR	BEARING STRENGTH
08	85°	06° 47' 06" N 101° 08' 50" E	PCN 21/F/C/X/T
26	265°	06° 47' 09" N 101° 09' 36" E	
APRON			PCN 21/R/C/X/T



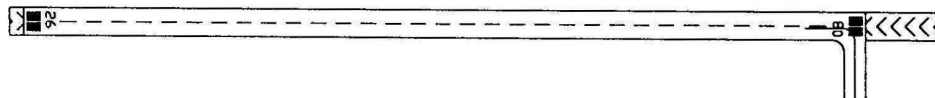
ANNUAL RATE OF CHANGE 3'E

ELEVATIONS IN FEET AND DIMENSIONS IN METRES  
BEARING ARE MAGNETIC

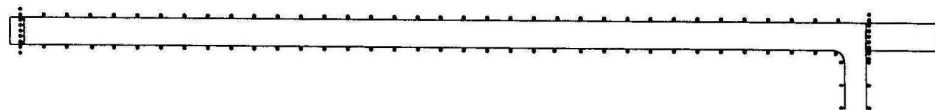


Remark : COORDINATE ARE WGS-84

MARKING AIDS RWY 08/26 AND EXIT TWY



LIGHTING AIDS RWY 08/26 AND EXIT TWY



**INTENTIONALLY BLANK**

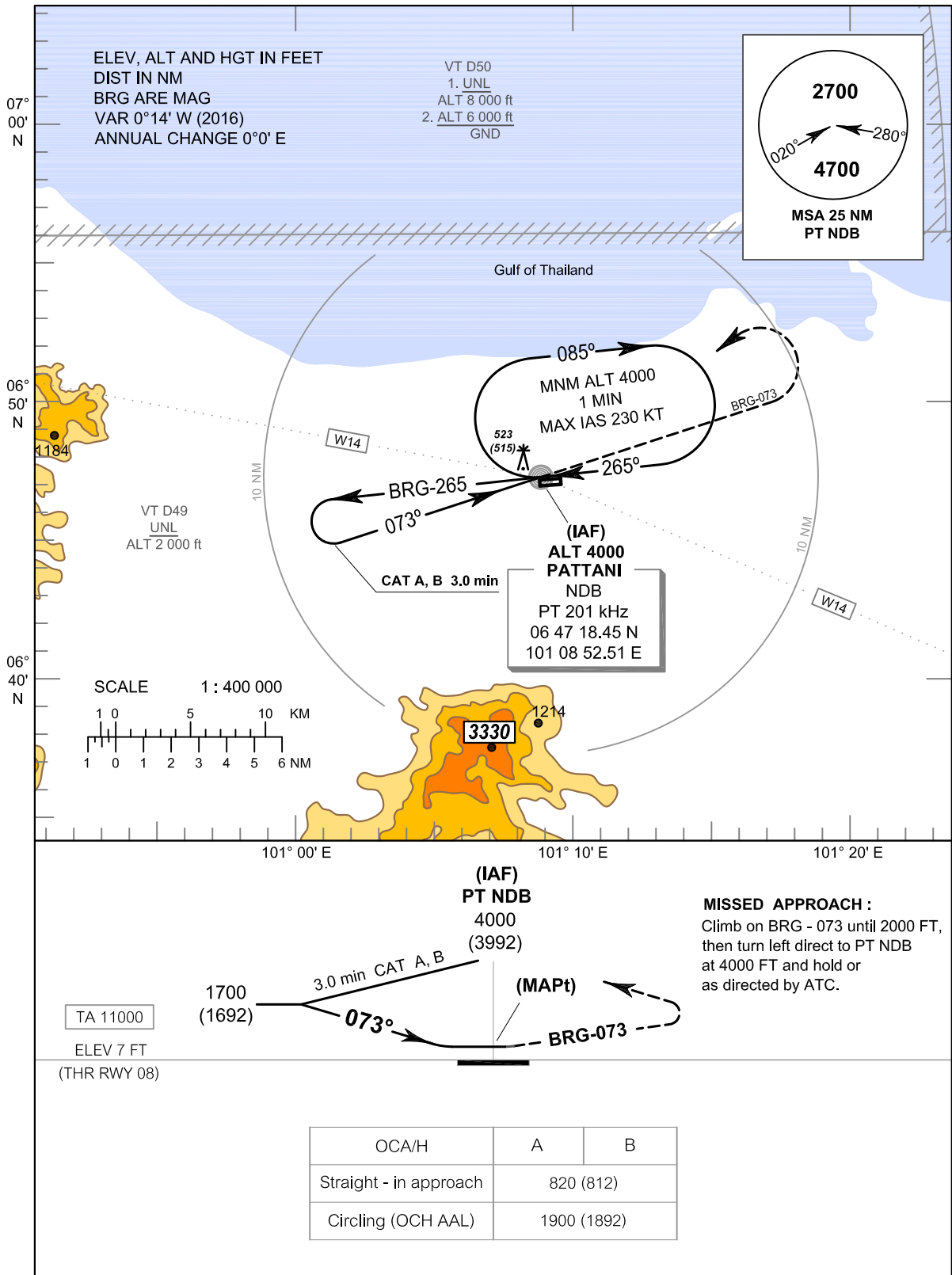


**INSTRUMENT  
APPROACH  
CHART - ICAO**

**AERODROME ELEV 8 FT  
HEIGHTS RELATED TO  
AERODROME ELEV**

APP : 126.0  
TWR : 119.3

**PATTANI / Pattani (VTSK)  
NDB RWY08  
CAT A, B**



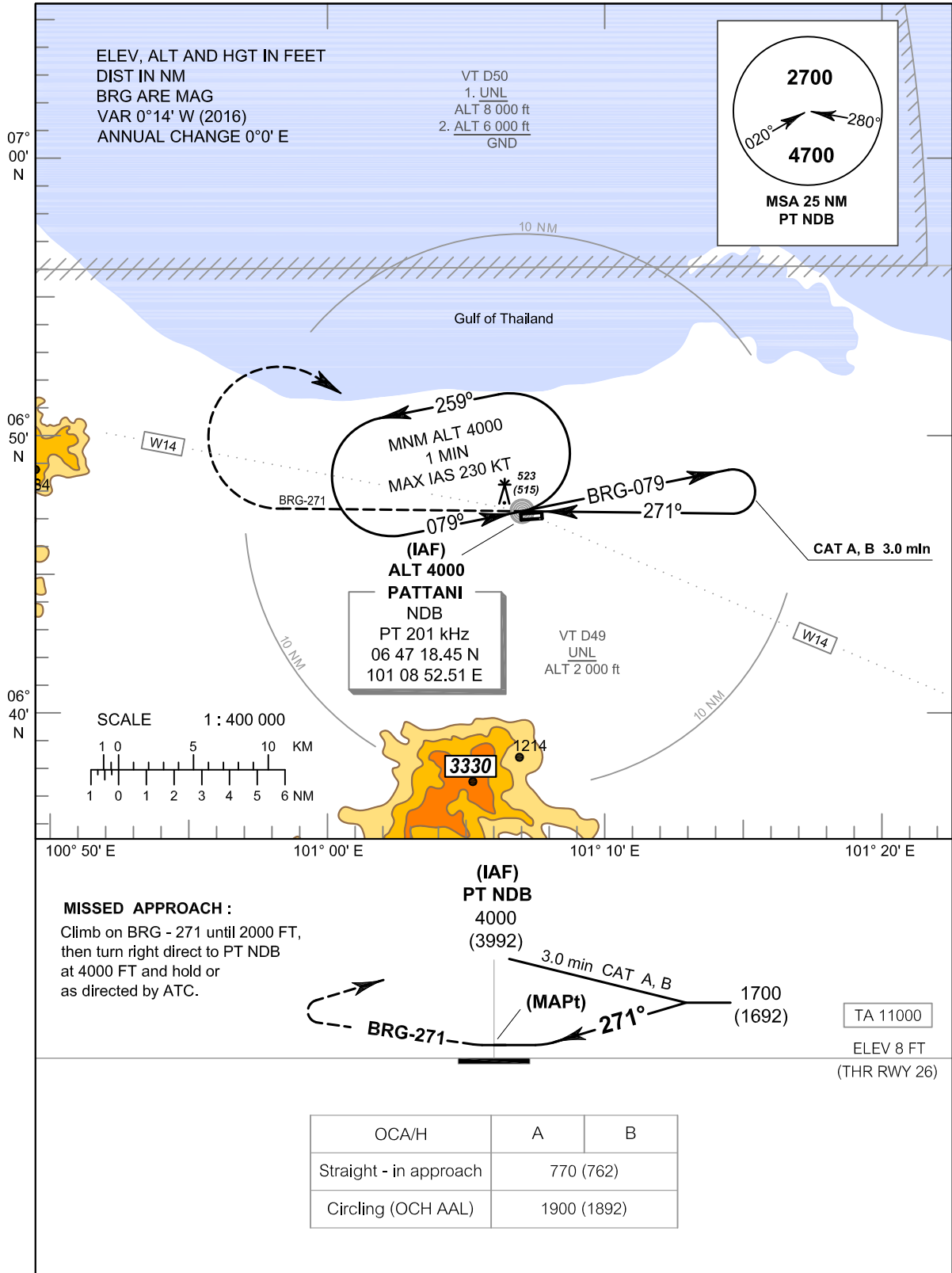
**INTENTIONALLY BLANK**

**INSTRUMENT  
APPROACH  
CHART - ICAO**

**AERODROME ELEV 8 FT  
HEIGHTS RELATED TO  
AERODROME ELEV**

APP : 126.0  
TWR : 119.3

**PATTANI / Pattani (VTSK)  
NDB RWY26  
CAT A, B**



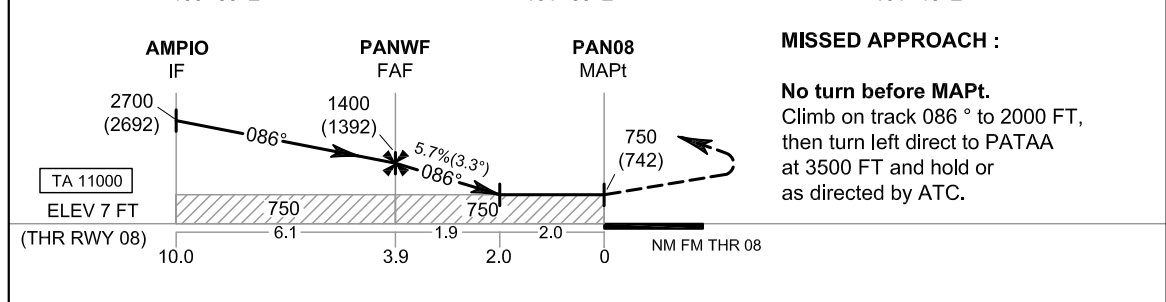
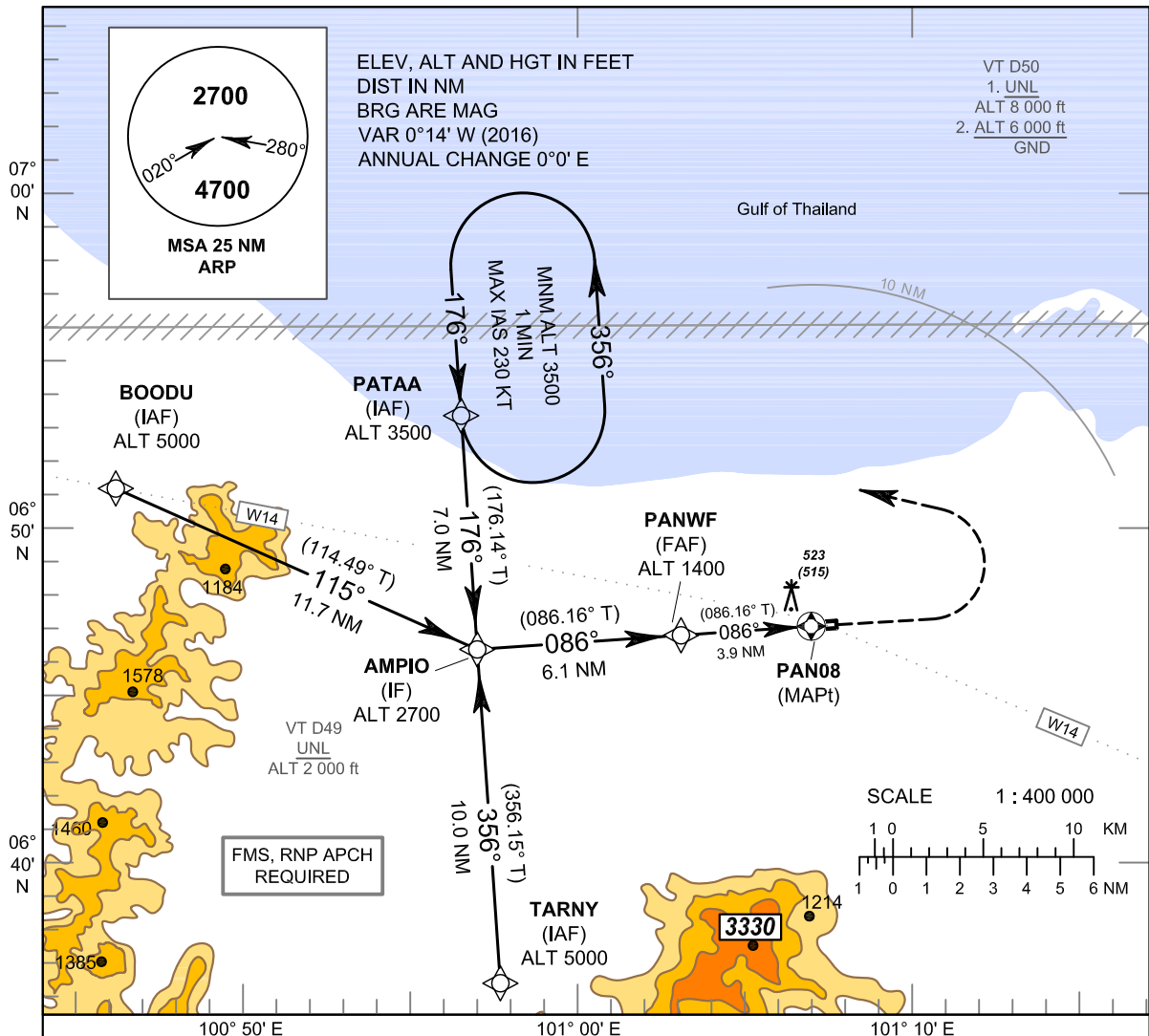
**INTENTIONALLY BLANK**

**INSTRUMENT  
APPROACH  
CHART - ICAO**

**AERODROME ELEV 8 FT  
HEIGHTS RELATED TO  
AERODROME ELEV**

APP : 126.0  
TWR : 119.3

**PATTANI / Pattani (VTSK)  
RNAV (GNSS) RWY08  
CAT A, B**



OCA/H	A		B	NM to NEXT WPT	FAF	3 NM				2 NM			
	750 (742)					Altitude (Height)	1095 (1087)			750 (742)			
LNAV	750 (742)			Ground speed	knot	70	90	100	120	140	160		
Circling (OCH AAL)	1900 (1892)			Rate of descent FAF-MAPt (5.7%)	(ft/min)	404	519	577	693	808	924		

**INSTRUMENT**      **AERODROME ELEV 8 FT**  
**APPROACH**        **HEIGHTS RELATED TO**  
**CHART - ICAO**      **AERODROME ELEV**

**PATTANI / Pattani (VTSK)**  
**RNAV (GNSS) RWY08**  
**CAT A, B**

**TABULAR DESCRIPTION**

RNAV (GNSS) RWY08											
Serial	Path	Waypoint Identifier	Flyover	Course	Magnetic	Distance	Turn	Altitude	Speed	VPA/	Navigation
Number	Descriptor			° M (° T)	Variation	(NM)	Direction	(FT)	(KT)	TCH	Specification
010	IF	PATAA (IAF)	-	-	+0.2	-	-	@3500	-	-	RNP APCH
020	TF	AMPIO (IF)	-	176°(176.14°)	+0.2	7.0	-	@2700	-	-	RNP APCH
010	IF	BOODU (IAF)	-	-	+0.2	-	-	@5000	-	-	RNP APCH
020	TF	AMPIO (IF)	-	115°(114.49°)	+0.2	11.7	-	@2700	-	-	RNP APCH
010	IF	TARNY (IAF)	-	-	+0.2	-	-	@5000	-	-	RNP APCH
020	TF	AMPIO (IF)	-	356°(356.15°)	+0.2	10.0	-	@2700	-	-	RNP APCH
010	IF	AMPIO (IF)	-	-	+0.2	-	-	@2700	-	-	RNP APCH
020	TF	PANWF (FAF)	-	086°(086.16°)	+0.2	6.1	-	@1400	-	-	RNP APCH
030	TF	PAN08 (MAPt)	Y	086°(086.16°)	+0.2	3.9	-	@750	-	-	RNP APCH
040	CA	-	-	086°(086.16°)	+0.2	-	-	+2000	-	-	RNP APCH
050	DF	PATAA (IAF)	-	-	+0.2	-	L	+3500	-	-	RNP APCH
060	HM	PATAA (IAF)	Y	176°(176.14°)	+0.2	1 minute	L	+3500	-230	-	RNP APCH

**WAYPOINT LIST**

RNAV (GNSS) RWY08		
Waypoint Identifier	Coordinates	
PATAA	06° 53' 26.76" N	100° 58' 19.94" E
BOODU	06° 51' 17.61" N	100° 48' 07.49" E
TARNY	06° 36' 24.20" N	100° 59' 28.85" E
AMPIO	06° 46' 25.71" N	100° 58' 48.33" E
PANWF	06° 46' 50.39" N	101° 04' 55.39" E
PAN08 (THR 08)	06° 47' 06.12" N	101° 08' 50.08" E



INSTRUMENT AERODROME ELEV 8 FT  
APPROACH HEIGHTS RELATED TO  
CHART - ICAO AERODROME ELEV

PATTANI / Pattani (VTSK)  
RNAV (GNSS) RWY26  
CAT A, B

**TABULAR DESCRIPTION**

RNAV (GNSS) RWY26											
Serial	Path	Waypoint Identifier	Flyover	Course	Magnetic	Distance	Turn	Altitude	Speed	VPA/	Navigation
Number	Descriptor			° M (° T)	Variation	(NM)	Direction	(FT)	(KT)	TCH	Specification
010	IF	ZIMMY (IAF)	-	-	+0.2	-	-	@5000	-	-	RNP APCH
020	TF	MAYOU (IF)	-	342°(341.30°)	+0.2	6.4	-	@2700	-	-	RNP APCH
010	IF	BOODU (IAF)	-	-	+0.2	-	-	@5000	-	-	RNP APCH
020	TF	PANAN	-	080°(080.09°)	+0.2	21.2	R	@5000	-	-	RNP APCH
030	TF	DATOE	-	091°(090.60°)	+0.2	10.0	R	@3500	-	-	RNP APCH
040	TF	MAYOU (IF)	-	176°(176.19°)	+0.2	7.0	-	@2700	-	-	RNP APCH
010	IF	MAYOU (IF)	-	-	+0.2	-	-	@2700	-	-	RNP APCH
020	TF	PANEF (FAF)	-	266°(266.18°)	+0.2	6.1	-	@1400	-	-	RNP APCH
030	TF	PAN26 (MAPt)	Y	266°(266.18°)	+0.2	3.9	-	@650	-	-	RNP APCH
040	CA	-	-	266°(266.18°)	+0.2	-	-	+2000	-	-	RNP APCH
050	DF	DATOE	-	-	+0.2	-	R	+3500	-	-	RNP APCH
060	HM	DATOE	Y	091°(090.60°)	+0.2	1 minute	L	+3500	-230	-	RNP APCH

**WAYPOINT LIST**

RNAV (GNSS) RWY26		
Waypoint Identifier	Coordinates	
ZIMMY	06° 41' 42.51" N	101° 21' 41.65" E
BOODU	06° 51' 17.61" N	100° 48' 07.49" E
PANAN	06° 54' 56.90" N	101° 09' 06.07" E
DATOE	06° 54' 50.44" N	101° 19' 09.32" E
MAYOU	06° 47' 49.36" N	101° 19' 37.41" E
PANEF	06° 47' 24.87" N	101° 13' 30.31" E
PAN26 (THR 26)	06° 47' 09.17" N	101° 09' 35.62" E