

VTPB AD 2.1 AERODROME LOCATION INDICATOR AND NAME

VTPB - PHETCHABUN / PHETCHABUN AIRPORT

VTPB AD 2.2 AERODROME GEOGRAPHICAL AND ADMINISTRATIVE DATA

1	ARP coordinates and site at AD	164033.71N 1011142.39E
2	Direction and distance from (city)	36 KM N, from city
3	Elevation/Reference temperature	450 FT
4	Geoid Undulation at AD ELEV PSN	NIL
5	MAG VAR/Annual change	0.76°W (2016)/0.00°E
6	AD Administration, address, telephone, telefax, telex, AFS	Director of Phetchabun Airport Phetchabun Airport Tambon Lanbah, Amphoe Lomsak Phetchabun Province 67110, Thailand Tel: +665 671 3569 +665 671 3571 Fax: +665 671 3570 AFS: VTPBYDYX
7	Types of traffic permitted (IFR/VFR)	IFR/VFR
8	Remarks	Operator: Department of Airports

VTPB AD 2.3 OPERATIONAL HOURS

1	Aerodrome Operator	2300-1000
2	Customs and immigration	NIL
3	Health and sanitation	NIL
4	AIS Briefing Office	see item 7 - ATS
5	ATS Reporting Office (ARO)	NIL
6	MET Briefing Office	NIL
7	ATS	2300-1100
8	Fuelling	NIL
9	Handling	NIL
10	Security	NIL
11	De-icing	NIL
12	Remarks	NIL

VTPB AD 2.4 HANDLING SERVICES AND FACILITIES

1	Cargo-handling facilities	NIL
2	Fuel/oil types	NIL
3	Fuelling facilities/capacity	NIL
4	De-icing facilities	NIL
5	Hangar space for visiting aircraft	NIL
6	Repair facilities for visiting aircraft	NIL
7	Remarks	NIL

VTPB AD 2.5 PASSENGER FACILITIES

1	Hotels	In the city
2	Restaurants	In the city
3	Transportation	NIL
4	Medical facilities	NIL
5	Bank and Post Office	NIL
6	Tourist Office	NIL
7	Remarks	NIL

VTPB AD 2.6 RESCUE AND FIRE FIGHTING SERVICES

1	AD category for fire fighting	Category 5
2	Rescue equipment	Yes
3	Capability for removal of disabled aircraft	NIL
4	Remarks	NIL

VTPB AD 2.7 SEASONAL AVAILABILITY - CLEARING

1	Types of clearing equipment	NIL
2	Clearance priorities	NIL
3	Remarks	The aerodrome is available all seasons.

VTPB AD 2.8 APRONS, TAXIWAYS AND CHECK LOCATIONS/POSITIONS DATA

1	Apron surface and strength	Surface: Concrete Strength: PCN 45/R/C/X/T
2	Taxiway width, surface and strength	Surface: Concrete and asphalt Strength: PCN 42/F/C/X/T
3	Altimeter checkpoint location and elevation	NIL
4	VOR checkpoints	NIL
5	INS checkpoints	NIL
6	Remarks	NIL

VTPB AD 2.9 SURFACE MOVEMENT GUIDANCE AND CONTROL SYSTEM AND MARKINGS

1	Use of aircraft stand ID signs, TWY guide lines and visual docking/parking guidance system of aircraft stands	NIL
2	RWY and TWY markings and LGT	RWY and TWY: Markings and lighted
3	Stop bars	Marking
4	Remarks	NIL

VTPB AD 2.10 AERODROME OBSTACLES

In approach/TKOF areas			In circling areas and at AD		Remarks
1			2		3
RWY/Area affected	Obstacle type Elevation Markings/LGT	Coordinates	Obstacle type Elevation Markings/LGT	Coordinates	
a	b	c	a	b	
NIL	NIL	NIL	NIL	NIL	NIL

VTPB AD 2.11 METEOROLOGICAL INFORMATION PROVIDED

1	Associated MET Office	Aeronautical Meteorological Station-Phetchabun, Northern Meteorological Center, Thai Meteorological Department (TMD)
2	Hours of service MET Office outside hours	2300-1100 NIL
3	Office responsible for TAF preparation Periods of validity	Supply TAF from Northern Meteorological Center 24 HR
4	Type of landing forecast Interval of issuance	TREND 1 HR
5	Briefing/consultation provided	Personal Consultation Tel: +665 482 4330 ext. 7308
6	Flight documentation Language(s) used	NIL
7	Charts and other information available for briefing or consultation	S, U85, Daily Weather Forecast, satellite and radar images
8	Supplementary equipment available for providing information	Automated Weather Observation System (AWOS), Weather Radar
9	ATS units provided with information	Phetchabun TWR
10	Additional information (limitation of service, etc.)	NIL

VTPB AD 2.12 RUNWAY PHYSICAL CHARACTERISTICS

Designations RWY NR	TRUE BRG	Dimensions of RWY(M)	Strength (PCN) and surface of RWY and SWY	THR coordinates RWY end coordinates THR geoid undulation	THR elevation and highest elevation of TDZ of precision APP RWY
1	2	3	4	5	6
18	180.33°	2100x45	PCN 42/F/C/X/T Concrete and asphalt	164107.89N 1011142.42E	THR 450 FT TDZ 450 FT
36	000.33°	2100x45	PCN 42/F/C/X/T Concrete and asphalt	163959.52N 1011142.36E	THR 449 FT TDZ 449 FT

Slope of RWY-SWY	SWY dimensions (M)	CWY dimensions (M)	Strip dimensions (M)	OFZ	Remarks
7	8	9	10	11	12
NIL	60x45	NIL	2340x300	NIL	NIL
NIL	60x45	NIL	2340x300	NIL	NIL

VTPB AD 2.13 DECLARED DISTANCES

RWY Designator	TORA (M)	TODA (M)	ASDA (M)	LDA (M)	Remarks
1	2	3	4	5	6
18	2100	2100	2160	2100	NIL
36	2100	2100	2160	2100	NIL

VTPB AD 2.14 APPROACH AND RUNWAY LIGHTING

RWY Designator	APCH LGT type LEN INTST	THR LGT colour WBAR	VASIS (MEHT) PAPI	TDZ, LGT LEN	RWY Centre Line LGT Length, spacing, colour, INTST	RWY edge LGT LEN, spacing, colour INTST	RWY End LGT colour WBAR	SWY LGT LEN (M) colour	Remarks
1	2	3	4	5	6	7	8	9	10
18	NIL	Green	PAPI Left 3.3° (15.72 M)	NIL	NIL	2100 M 60 M White, LIH	Red	NIL	NIL
36	SALS 420M LIH	Green	PAPI Left 3° (15.72 M)	NIL	NIL	2100 M 60 M White, LIH	Red	NIL	NIL

VTPB AD 2.15 OTHER LIGHTING, SECONDARY POWER SUPPLY

1	ABN/IBN location, characteristics and hours of operation	ABN: ABN: on top of control tower, FLG W G EV 2.5 SEC.,HO, HS IBN: NIL
2	LDI location and LGT Anemometer location and LGT	NIL
3	TWY edge and centre line lighting	LIM TWY EDGE Lighting
4	Secondary power supply/switch-over time	Secondary power supply to all lighting at the airport. Switch - over time 10 SEC.
5	Remarks	NIL

VTPB AD 2.16 HELICOPTER LANDING AREA

1	Coordinates TLOF or THR of FATO Geoid undulation	NIL
2	TLOF and/or FATO elevation M/FT	1 Landing area on Taxiway B
3	TLOF and FATO area dimensions, surface, strength, marking	NIL
4	True and MAG BRG of FATO	NIL
5	Declared distance available	NIL
6	APP and FATO lighting	NIL
7	Remarks	NIL

VTPB AD 2.17 ATS AIRSPACE

1	Designation and lateral limits	A circle of 5 NM radius centre on Phetchabun DVOR/DME (164033.66N 1011148.12E)
2	Vertical limits	2000 FT/AGL
3	Airspace classification	C
4	ATS unit call sign Language(s)	Phetchabun Tower English, Thai
5	Transition altitude	11000 FT
6	Remarks	NIL

VTPB AD 2.18 ATS COMMUNICATION FACILITIES

Service designation	Call sign	Frequency	Hours of operation	Remarks
1	2	3	4	5
APP	Phetchabun Approach	126.7 MHZ	23:00-11:00	NIL
TWR	Phetchabun Tower	122.3 MHZ 236.6 MHZ	23:00-11:00	NIL

VTPB AD 2.19 RADIO NAVIGATION AND LANDING AIDS

Type of aid, MAG VAR CAT of ILS/MLS (For VOR/ILS/ MLS, give declination)	ID	Frequency	Hours of operation	Position of transmitting antenna coordinates	Elevation of DME transmitting antenna	Remarks
1	2	3	4	5	6	7
NDB	PH	283 KHZ	H24	163939.13N 1011125.30E		Output 400 watts NDB can not provide adequate signal to 50 NM at required altitude in various areas due to mountainous area around the STN: -RDL 041-180 DEG beyond 50 NM should not below 7000 FT. -RDL 181-270 DEG beyond 50 NM should not below 7100 FT. -RDL 271-340 DEG beyond 50 NM should not below 8500 FT. -RDL 341-015 DEG flown to 45 NM should not below 8500 FT. (due to border limited) -RDL 016-040 DEG beyond 50 NM should not below 7000 FT.
DVOR/DME	PCB	115.4 MHZ CH101X	H24	164033.66N 1011148.12E		DVOR/DME restriction, due to mountainous terrain surround DVOR/DME station coverage check does not provide adequate signal 40 NM at the required altitude in various areas as following: -RDL 061-230 DEG beyond 30 NM ALT should not below 6500 FT -RDL 231-320 DEG beyond 30 NM ALT should not below 8000 FT -RDL 321-060 DEG beyond 40 NM ALT should not below 7500 FT

Type of aid, MAG VAR CAT of ILS/MLS (For VOR/ILS/ MLS, give declination)	ID	Frequency	Hours of operation	Position of transmitting antenna coordinates	Elevation of DME transmitting antenna	Remarks
1	2	3	4	5	6	7
ILS CAT I RWY36 LOC/ DME	IPCB	109.1 MHZ CH28X	H24	164117.65N 1011142.43E	446.84 FT	LOC designated operation coverage 18 NM, ALT 7000 FT AMSL
DME			H24	164117.66N 1011144.85E		DME Paired with LOC FREQ
GP		331.4 MHZ	H24	164008.96N 1011146.42E		GP 3 DEG, RDH 50 FT

VTPB AD 2.20 LOCAL AERODROME REGULATIONS

NIL

VTPB AD 2.21 NOISE ABATEMENT PROCEDURES

NIL

VTPB AD 2.22 FLIGHT PROCEDURES

NIL

VTPB AD 2.23 ADDITIONAL INFORMATION

NIL

VTPB AD 2.24 CHARTS RELATED TO AN AERODROME

Chart name	Page
Aerodrome Chart - ICAO	AD 2-VTPB-2-1
Instrument Approach Chart - ICAO - NDB RWY 36	AD 2-VTPB-8-1
Instrument Approach Chart - ICAO - VOR RWY 36	AD 2-VTPB-8-3
Instrument Approach Chart - ICAO - VOR RWY 36 (Fix and point list table)	AD 2-VTPB-8-4
Instrument Approach Chart - ICAO - ILS or LOC RWY 36	AD 2-VTPB-8-5
Instrument Approach Chart - ICAO - ILS or LOC RWY 36 (Fix and point list table)	AD 2-VTPB-8-6
Instrument Approach Chart - ICAO - RNAV (GNSS) RWY 18	AD 2-VTPB-8-7
Instrument Approach Chart - ICAO - RNAV (GNSS) RWY 18 (Tabular description)	AD 2-VTPB-8-8
Instrument Approach Chart - ICAO - RNAV (GNSS) RWY 36	AD 2-VTPB-8-9
Instrument Approach Chart - ICAO - RNAV (GNSS) RWY 36 (Tabular description)	AD 2-VTPB-8-10

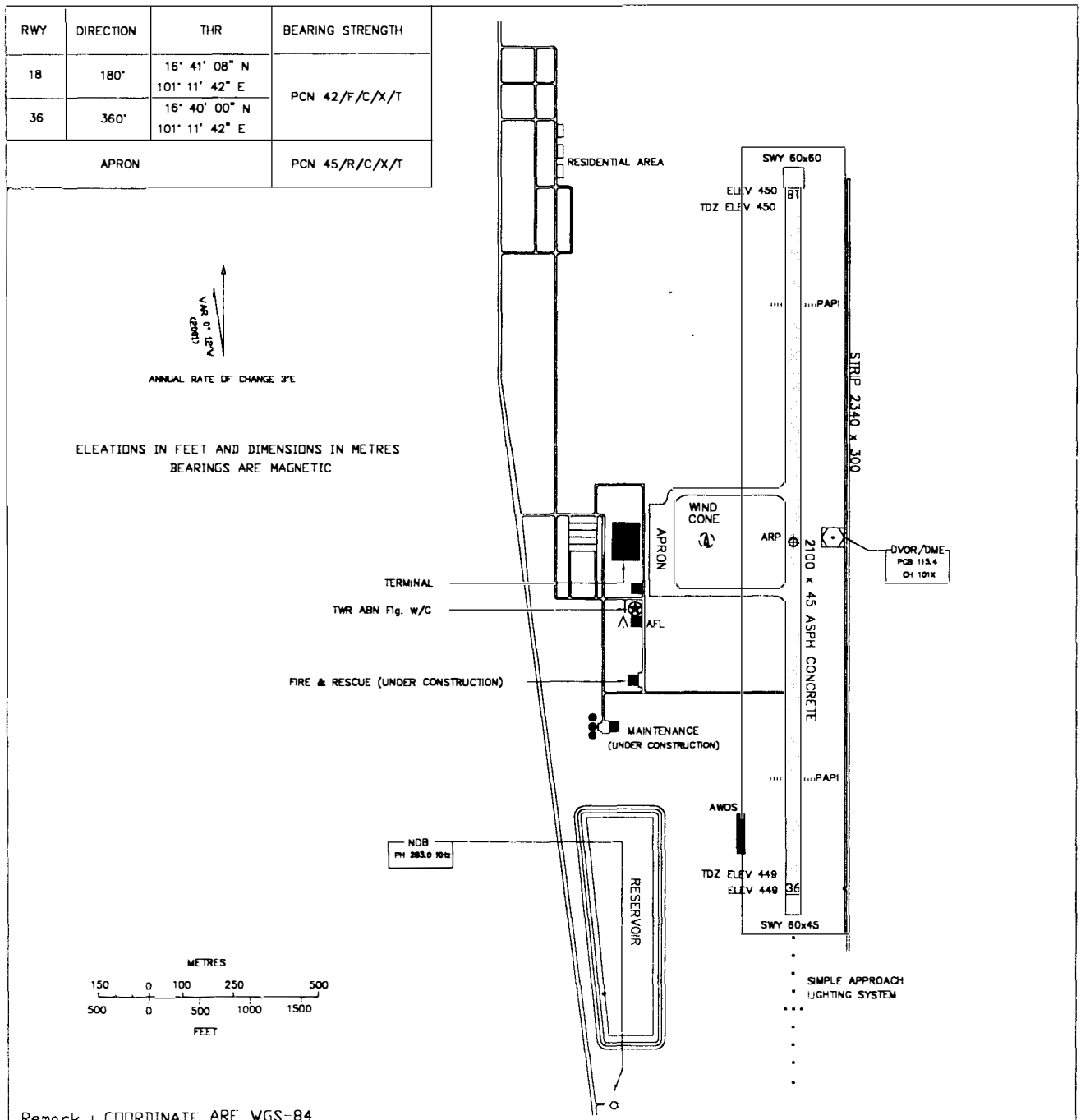
AERODROME CHART-ICAO

16° 40' 34" N
101° 11' 42" E

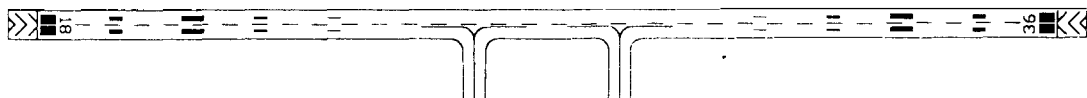
ELEV 450 ft
137 m

TWR 127.3
236.6

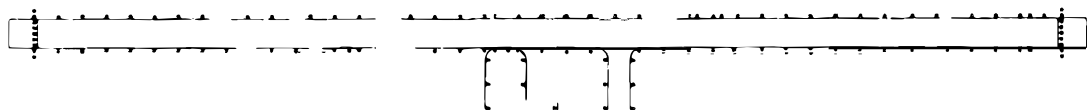
PHETCHABUN / Phetchabun



MARKING AIDS RWY 18/36 AND EXIT TWY



LIGHTING AIDS RWY 18/36 AND EXIT TWY



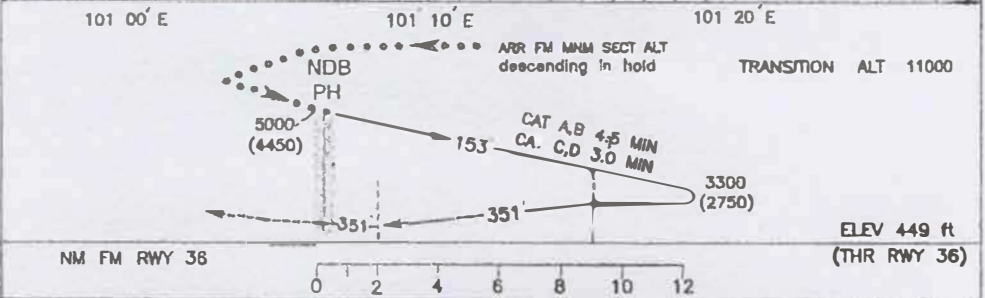
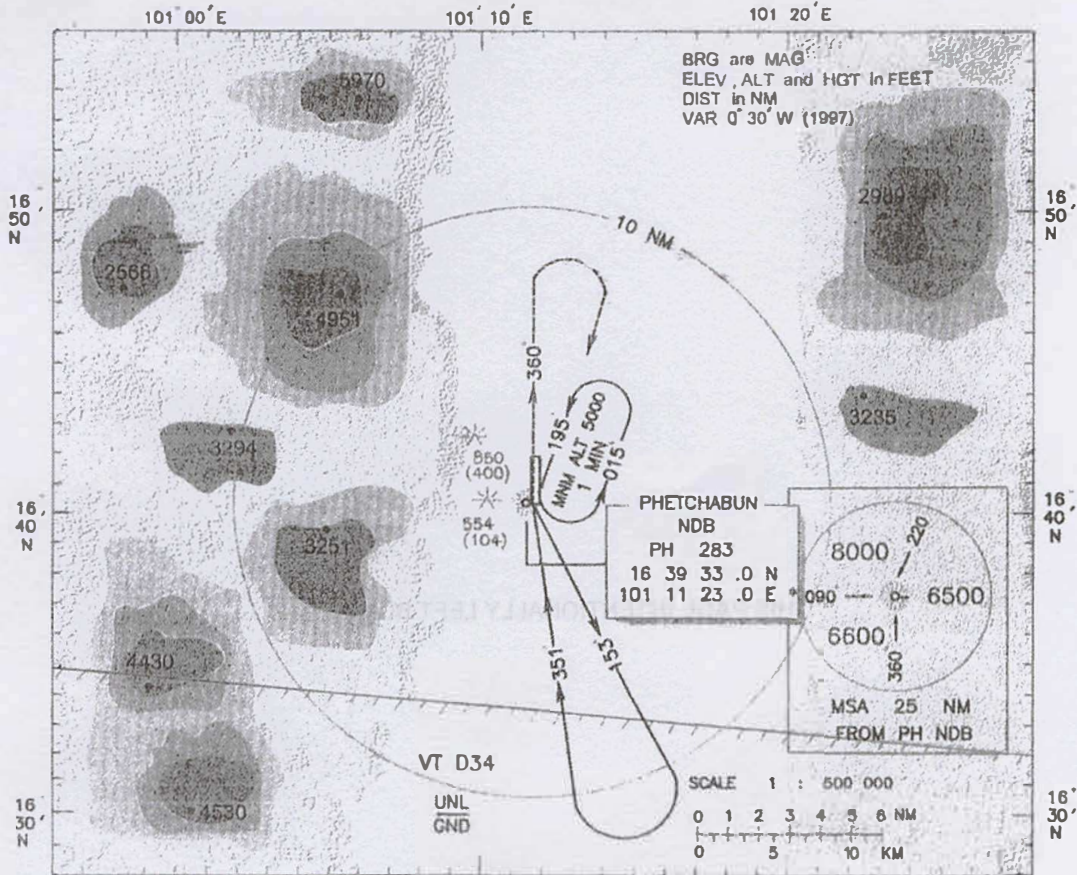
INTENTIONALLY BLANK

INSTRUMENT
APPROACH
CHART - ICAO

AERODROME ELEV 450 ft
HEIGHTS RELATED TO
AERODROME ELEV

APP 126.7
TWR 122.3
236.6

PHETCHABUN / Phetchabun
NDB
RWY 36



MISSED APPROACH: Climb on track 351 to the NDB then climb on bearing 360 to 2400(1850) ft then turn right (during turn speed restricted IAS 185 kt) climbing back to NDB 5000 (4450) ft.

Remark: No circling west of AD for ACFT CAT C and D.				
OCA / H	A	B	C	D
Straight in approach	1120 (570)			
Circling	1120 (570)			1140 (590)

INTENTIONALLY BLANK

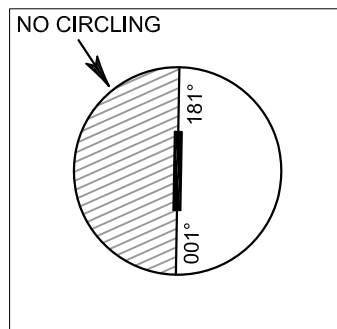
**INSTRUMENT
APPROACH
CHART - ICAO**

AERODROME ELEV 450 FT
HEIGHTS RELATED TO
THR RWY36 - ELEV 449 FT

PHETCHABUN / Phetchabun (VTPB)

VOR RWY36

Fix / Point		Coordinates	
TUVBO (IAF)	R-201 / 23.1D PCB	16 18 48.55 N	101 03 32.62 E
PB001	R-201 / 20.7D PCB	16 21 03.32 N	101 04 23.70 E
NISIP (IAF)	R-277 / 15.0D PCB	16 42 12.28 N	100 56 16.08 E
PB003	R-212 / 13.0D PCB	16 29 22.01 N	101 04 50.36 E
SABOR (IAF)	R-094 / 15.0D PCB	16 39 47.88 N	101 27 24.46 E
PB004	R-153 / 13.0D PCB	16 29 01.59 N	101 18 08.36 E
PADPU (IF)	R-182 / 13.0D PCB	16 27 30.73 N	101 11 26.58 E
PB136 (FAF)	R-182 / 6.0D PCB	16 34 34.24 N	101 11 38.23 E
MAPt	R-182 / 0.6D PCB	16 39 59.46 N	101 11 47.18 E
VOR (IAF)	PCB	16 40 33.66 N	101 11 48.12 E

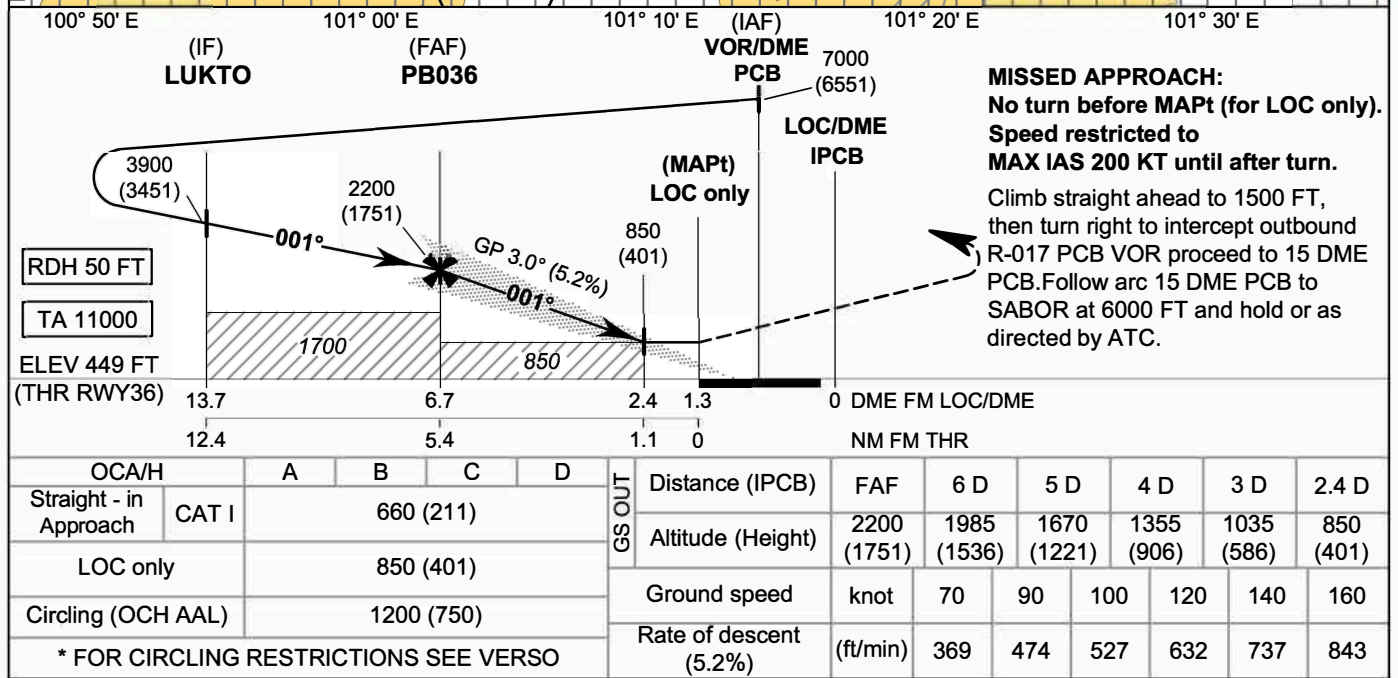
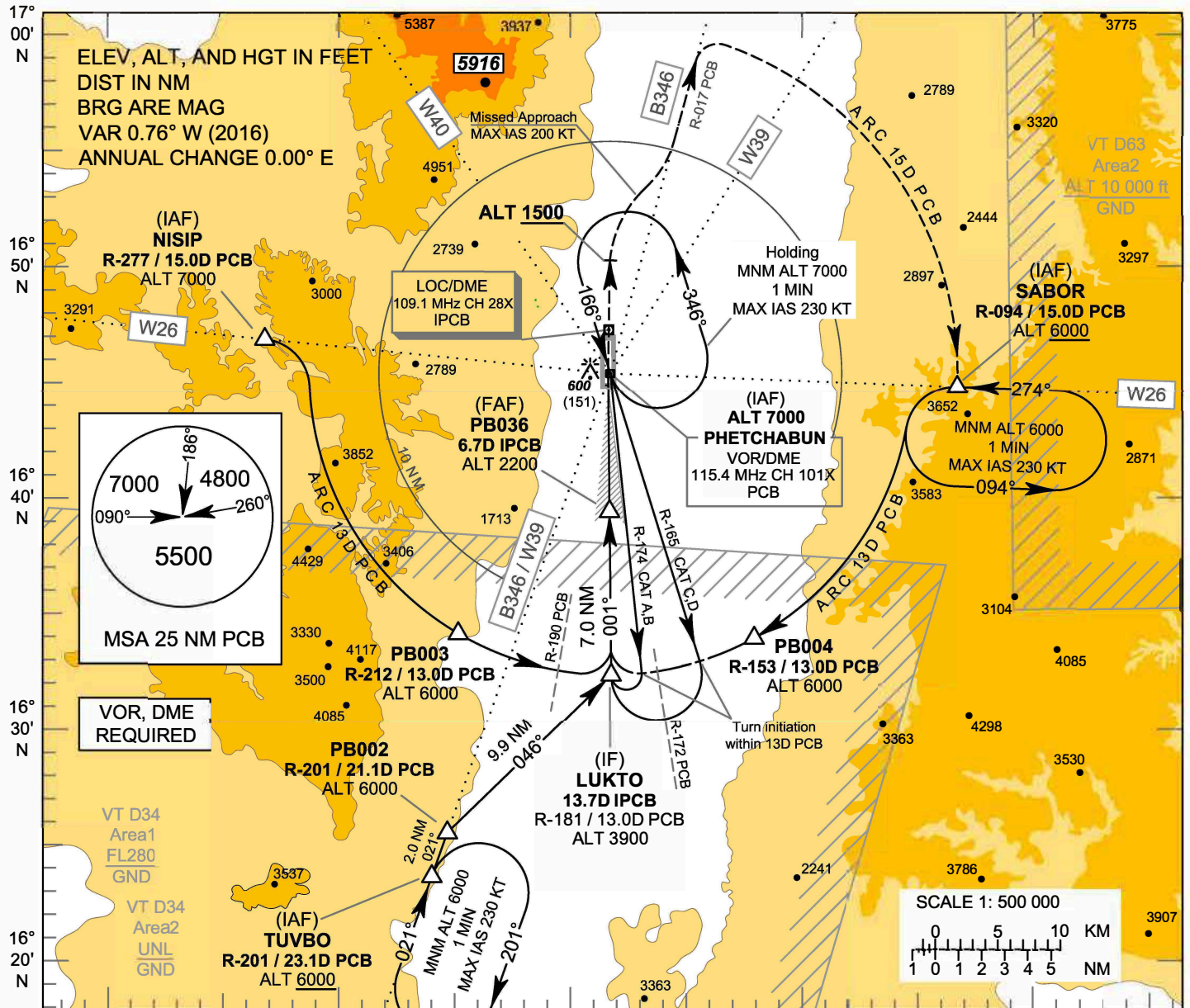


**INSTRUMENT
APPROACH
CHART - ICAO**

**AERODROME ELEV 450 FT
HEIGHTS RELATED TO
THR RWY36 - ELEV 449 FT**

APP : 126.7
TWR : 122.3 , 236.6

PHETCHABUN / Phetchabun (VTPB)
ILS or LOC RWY36



OCT 2017

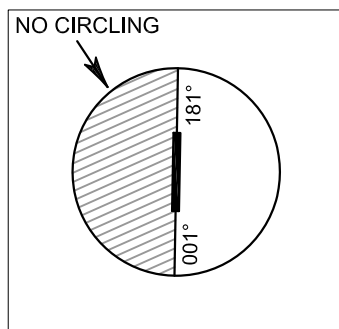
**INSTRUMENT
APPROACH
CHART - ICAO**

**AERODROME ELEV 450 FT
HEIGHTS RELATED TO
THR RWY36 - ELEV 449 FT**

PHETCHABUN / Phetchabun (VTPB)

ILS or LOC RWY36

Fix / Point		Coordinates	
TUVBO (IAF)	R-201 / 23.1D PCB	16 18 48.55 N	101 03 32.62 E
PB002	R-201 / 21.1D PCB	16 20 41.71 N	101 04 15.51 E
NISIP (IAF)	R-277 / 15.0D PCB	16 42 12.28 N	100 56 16.08 E
PB003	R-212 / 13.0D PCB	16 29 22.01 N	101 04 50.36 E
SABOR (IAF)	R-094 / 15.0D PCB	16 39 47.88 N	101 27 24.46 E
PB004	R-153 / 13.0D PCB	16 29 01.59 N	101 18 08.36 E
LUKTO (IF)	13.7D IPCB	16 27 30.47 N	101 11 41.70 E
PB036 (FAF)	6.7D IPCB	16 34 34.19 N	101 11 42.07 E
MAPt (LOC only) @THR36	1.3D IPCB	16 39 59.52 N	101 11 42.36 E
LOC / DME	IPCB	16 41 17.65 N	101 11 42.43 E
VOR (IAF)	PCB	16 40 33.66 N	101 11 48.12 E

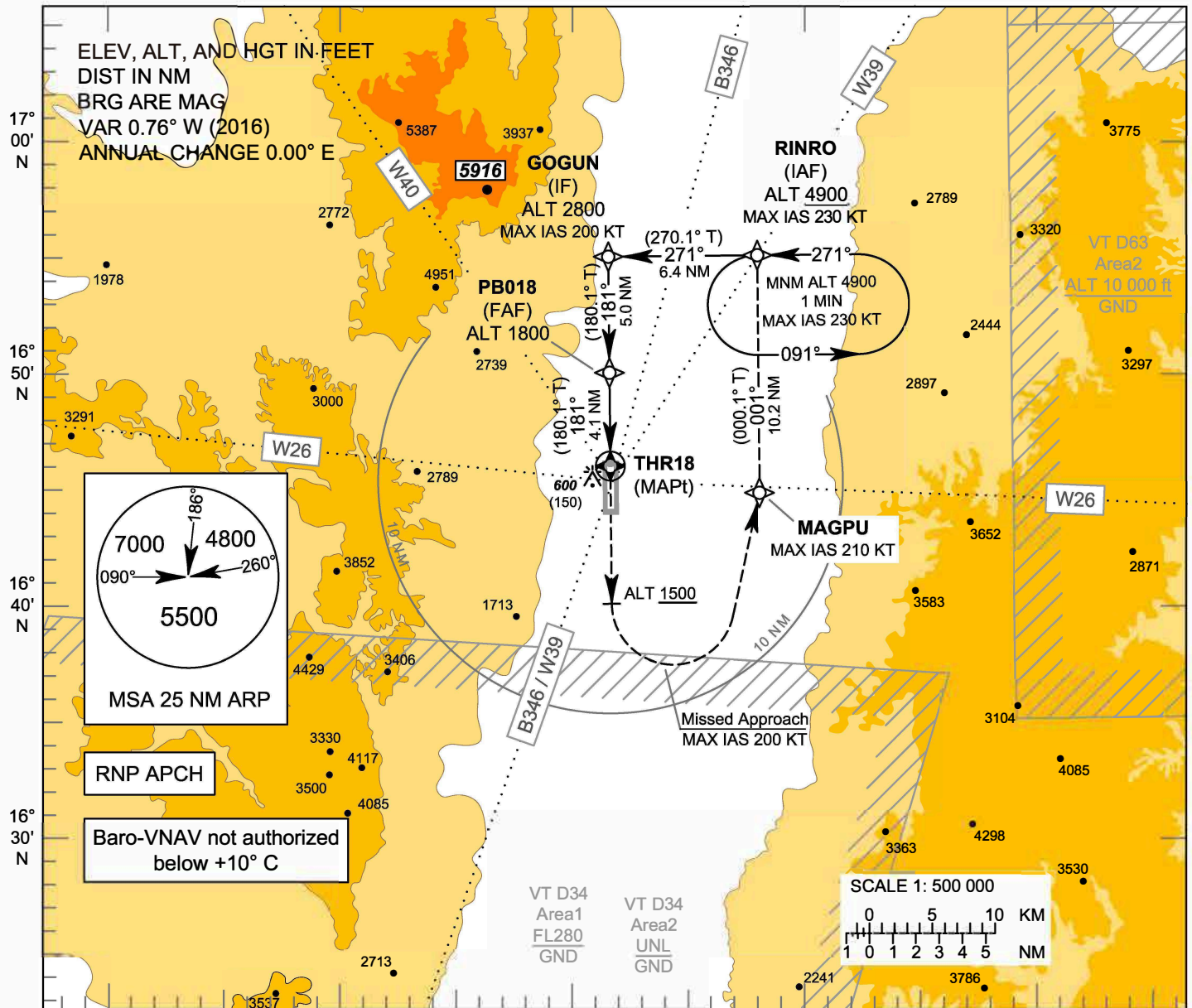


**INSTRUMENT
APPROACH
CHART - ICAO**

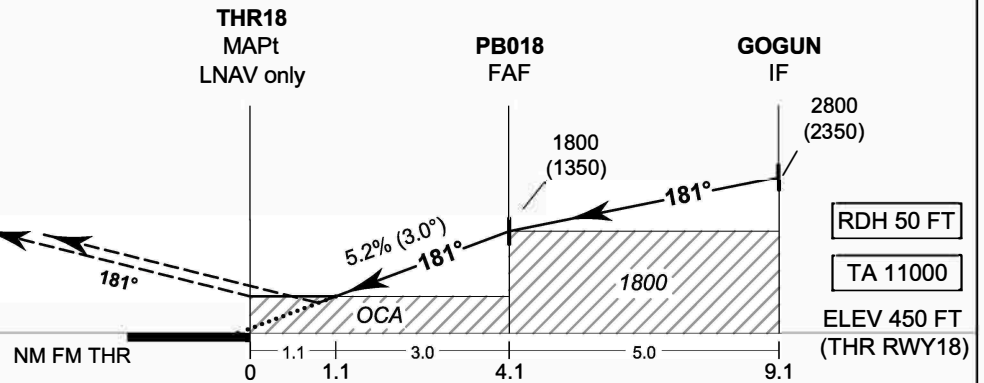
AERODROME ELEV 450 FT
HEIGHTS RELATED TO
THR RWY18 - ELEV 450 FT

APP : 126.7
TWR : 122.3 , 236.6

PHETCHABUN / Phetchabun (VTPB)
RNAV (GNSS) RWY18



MISSED APPROACH:
No turn before MAPt.
Speed restricted to
MAX IAS 200 KT until after turn.
Climb on track 181° to 1500 FT,
then turn left direct to MAGPU.
Continue to RINRO at 4900 FT
and hold or as directed by ATC.



OCA/H	A	B	C	D	NM to NEXT WPT	1.1 NM	2 NM	3 NM	4 NM	FAF			
LNAV / VNAV		720 (270)				Altitude (Height)	850 (400)	1130 (680)	1450 (1000)	1765 (1315)	1800 (1350)		
LNAV		850 (400)				Ground speed	knot	70	90	100	120	140	160
Circling (OCH AAL)		1200 (750)				Rate of descent (5.2%)	(ft/min)	369	474	527	632	737	843

OCT 2017

**INSTRUMENT
APPROACH
CHART - ICAO**

**AERODROME ELEV 450 FT
HEIGHTS RELATED TO
THR RWY18 - ELEV 450 FT**

PHETCHABUN / Phetchabun (VTPB)

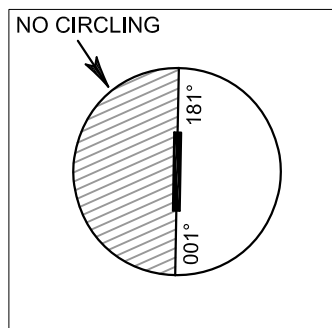
RNAV (GNSS) RWY18

TABULAR DESCRIPTION

RNAV (GNSS) RWY18											
Serial Number	Path Descriptor	Waypoint Identifier	Flyover	Course ° M (° T)	Magnetic Variation	Distance (NM)	Turn Direction	Altitude (FT)	Speed (KT)	VPA/ TCH	Navigation Specification
010	IF	RINRO (IAF)	-	-	+0.76	-	-	+4900	-230	-	RNP APCH
020	TF	GOGUN (IF)	-	271°(270.1°)	+0.76	6.4	L	@2800	-200	-	RNP APCH
030	TF	PB018 (FAF)	-	181°(180.1°)	+0.76	5.0	-	@1800	-	-	RNP APCH
040	TF	THR18 (MAPt)	Y	181°(180.1°)	+0.76	4.1	-	@500	-	-3.0/50	RNP APCH
050	CA	-	-	181°(180.1°)	+0.76	-	-	+1500	-200	-	RNP APCH
060	DF	MAGPU	-	-	+0.76	-	L	-	-210	-	RNP APCH
070	TF	RINRO	-	001°(000.1°)	+0.76	10.2	-	+4900	-230	-	RNP APCH
080	HM	RINRO	Y	271°(270.1°)	+0.76	1 minute	L	+4900	-230	-	RNP APCH

WAYPOINT LIST

RNAV (GNSS) RWY18	
Waypoint Identifier	Coordinates
RINRO	16° 50' 15.69" N 101° 18' 23.91" E
GOGUN	16° 50' 16.13" N 101° 11' 42.90" E
PB018	16° 45' 14.90" N 101° 11' 42.64" E
THR18	16° 41' 07.89" N 101° 11' 42.42" E
MAGPU	16° 39' 59.14" N 101° 18' 23.01" E



**INSTRUMENT
APPROACH
CHART - ICAO**

**AERODROME ELEV 450 FT
HEIGHTS RELATED TO
THR RWY36 - ELEV 449 FT**

PHETCHABUN / Phetchabun (VTPB)

RNAV (GNSS) RWY36

TABULAR DESCRIPTION

RNAV (GNSS) RWY36											
Serial Number	Path Descriptor	Waypoint Identifier	Flyover	Course ° M (° T)	Magnetic Variation	Distance (NM)	Turn Direction	Altitude (FT)	Speed (KT)	VPA/ TCH	Navigation Specification
010	IF	TUVBO (IAF)	-	-	+0.76	-	-	+6000	-230	-	RNP APCH
020	TF	LUKTO (IF)	-	043°(042.2°)	+0.76	11.7	-	@3800	-230	-	RNP APCH
010	IF	VABRO (IAF)	-	-	+0.76	-	-	+6000	-230	-	RNP APCH
020	TF	LUKTO (IF)	-	091°(090.1°)	+0.76	7.0	-	@3800	-230	-	RNP APCH
010	IF	EKVIP (IAF)	-	-	+0.76	-	-	+6000	-230	-	RNP APCH
020	TF	LUKTO (IF)	-	271°(270.1°)	+0.76	7.0	-	@3800	-230	-	RNP APCH
010	IF	LUKTO (IF)	-	-	+0.76	-	-	@3800	-230	-	RNP APCH
020	TF	PB036 (FAF)	-	001°(000.1°)	+0.76	7.0	-	@2200	-	-	RNP APCH
030	TF	THR36 (MAPt)	Y	001°(000.1°)	+0.76	5.4	-	@499	-	-3.0/50	RNP APCH
040	CA	-	-	001°(000.1°)	+0.76	-	-	+1500	-200	-	RNP APCH
050	DF	EMREX	-	-	+0.76	-	R	-	-220	-	RNP APCH
060	TF	EKVIP	-	181°(180.1°)	+0.76	13.6	-	+6000	-230	-	RNP APCH
070	HM	EKVIP	Y	271°(270.1°)	+0.76	1 minute	R	+6000	-230	-	RNP APCH

WAYPOINT LIST

RNAV (GNSS) RWY36	
Waypoint Identifier	Coordinates
TUVBO	16° 18' 48.55" N 101° 03' 32.62" E
VABRO	16° 27' 30.71" N 101° 04' 24.66" E
EKVIP	16° 27' 29.99" N 101° 18' 58.75" E
LUKTO	16° 27' 30.47" N 101° 11' 41.70" E
PB036	16° 34' 34.19" N 101° 11' 42.07" E
THR36	16° 39' 59.52" N 101° 11' 42.36" E
EMREX	16° 41' 07.40" N 101° 18' 59.98" E

