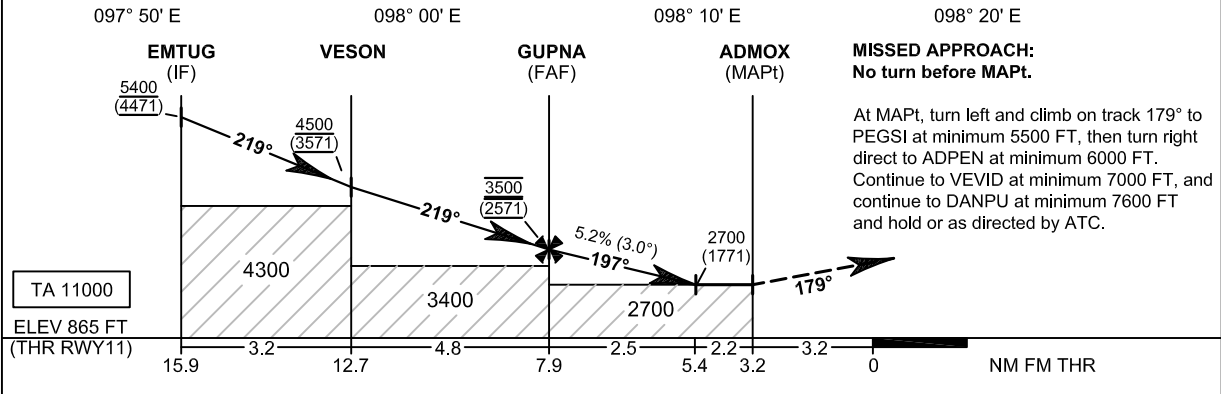
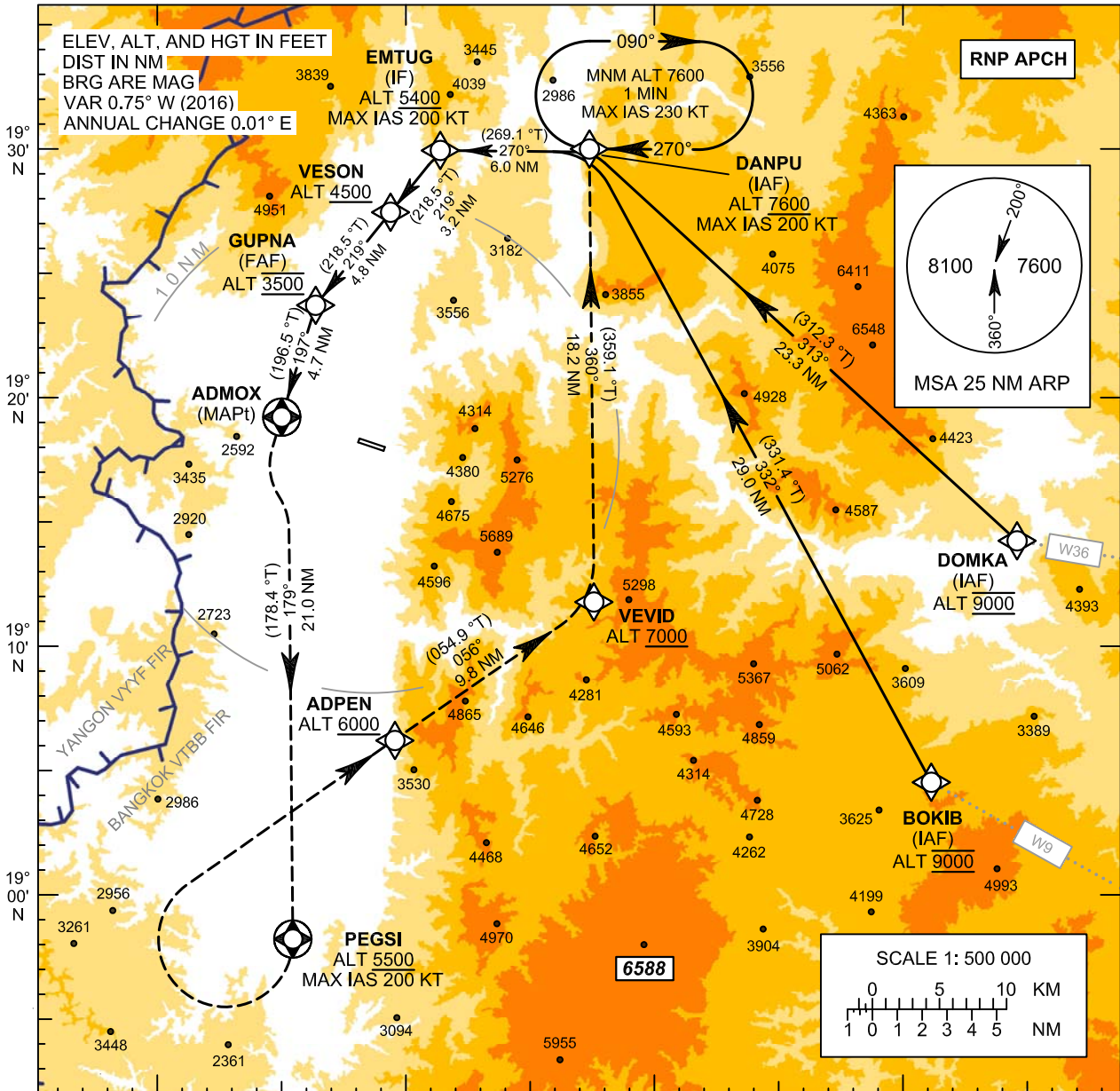


**INSTRUMENT APPROACH CHART - ICAO**

**AERODROME ELEV 929 FT**  
**HEIGHTS RELATED TO AERODROME ELEV**

APP : 126.2 MHZ  
 TWR : 122.3, 236.6 MHZ  
 ATIS : 384 KHZ

**MAE HONG SON / Mae Hong Son (VTCH)**  
**RNAV (GNSS) a RWY11**



**MISSED APPROACH:**  
 No turn before MAPt.  
 At MAPt, turn left and climb on track 179° to PEGSI at minimum 5500 FT, then turn right direct to ADPEN at minimum 6000 FT. Continue to VEVID at minimum 7000 FT, and continue to DANPU at minimum 7600 FT and hold or as directed by ATC.

OCA/H	A	B	C	NM to NEXT WPT	FAF	7 NM	6 NM	5.4 NM
LNAV	NOT AUTHORIZED			Altitude (Height)	3500 (2571)	3190 (2261)	2875 (1946)	2700 (1771)
Circling (OCH AAL)	2700 (1771)			Ground Speed	knot	70	90	100
* FOR CIRCLING RESTRICTIONS SEE VERSO				Rate of Descent FAF-MAPt 5.2%	ft/min	369	474	527

CHANGE: NEW CHART.