

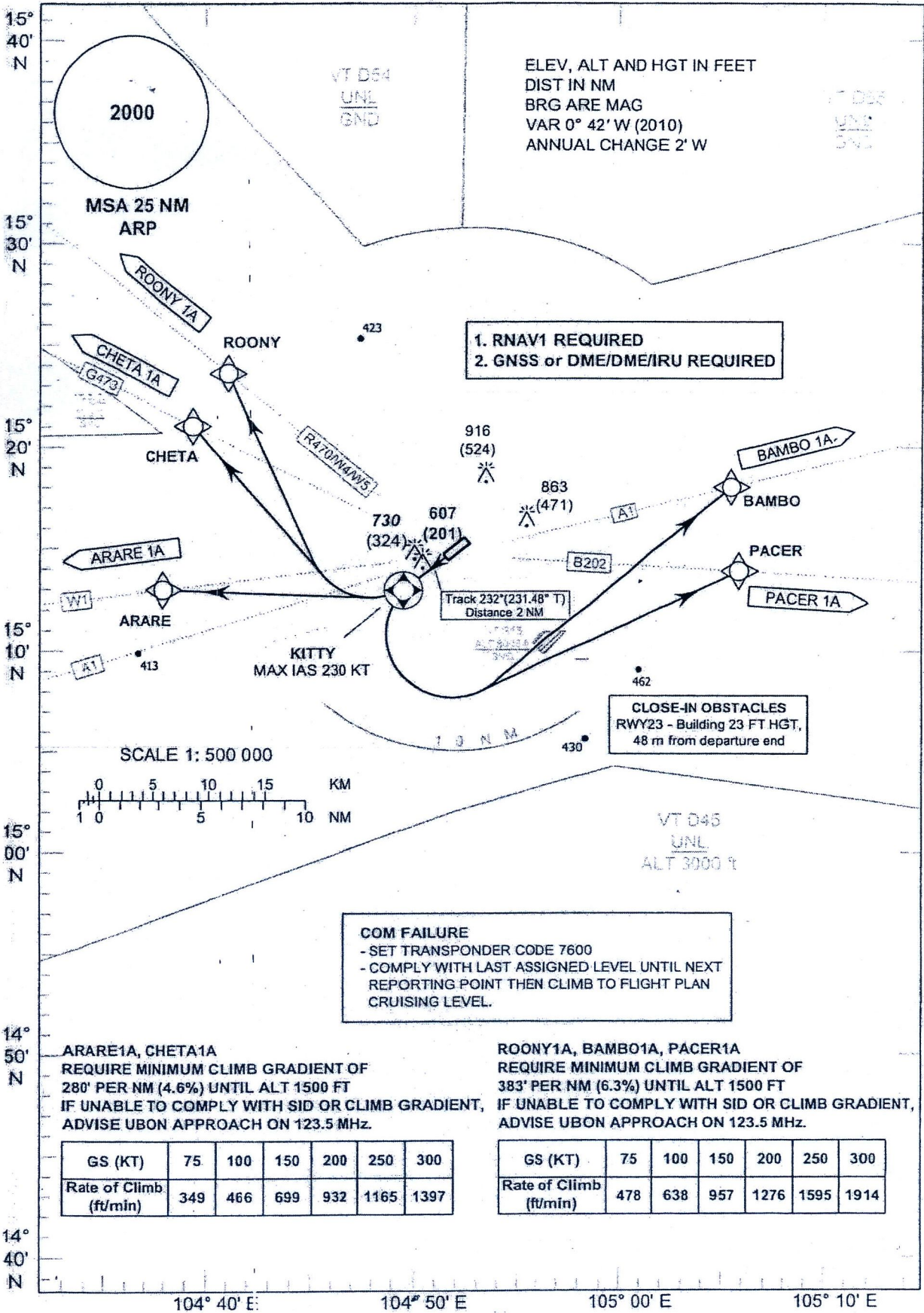
STANDARD DEPARTURE CHART - INSTRUMENT (SID) - ICAO

TRANSITION ALTITUDE
11000 FT

APP : 123.5 , 257.8
TWR : 119.9 , 274.5
GND : 121.9 , 275.8

UBON RATCHATHANI /
Ubon Ratchathani (VTUU)
RNAV RWY23

ARARE1A, BAMBO1A, CHETA1A, PACER1A, ROONY1A



ELEV, ALT AND HGT IN FEET
DIST IN NM
BRG ARE MAG
VAR 0° 42' W (2010)
ANNUAL CHANGE 2' W

1. RNAV1 REQUIRED
2. GNSS or DME/DME/IRU REQUIRED

CLOSE-IN OBSTACLES
RWY23 - Building 23 FT HGT,
48 m from departure end

COM FAILURE
- SET TRANSPONDER CODE 7600
- COMPLY WITH LAST ASSIGNED LEVEL UNTIL NEXT REPORTING POINT THEN CLIMB TO FLIGHT PLAN CRUISING LEVEL.

ARARE1A, CHETA1A
REQUIRE MINIMUM CLIMB GRADIENT OF
280° PER NM (4.6%) UNTIL ALT 1500 FT
IF UNABLE TO COMPLY WITH SID OR CLIMB GRADIENT,
ADVISE UBON APPROACH ON 123.5 MHz.

ROONY1A, BAMBO1A, PACER1A
REQUIRE MINIMUM CLIMB GRADIENT OF
383° PER NM (6.3%) UNTIL ALT 1500 FT
IF UNABLE TO COMPLY WITH SID OR CLIMB GRADIENT,
ADVISE UBON APPROACH ON 123.5 MHz.

GS (KT)	75	100	150	200	250	300
Rate of Climb (ft/min)	349	466	699	932	1165	1397

GS (KT)	75	100	150	200	250	300
Rate of Climb (ft/min)	478	638	957	1276	1595	1914