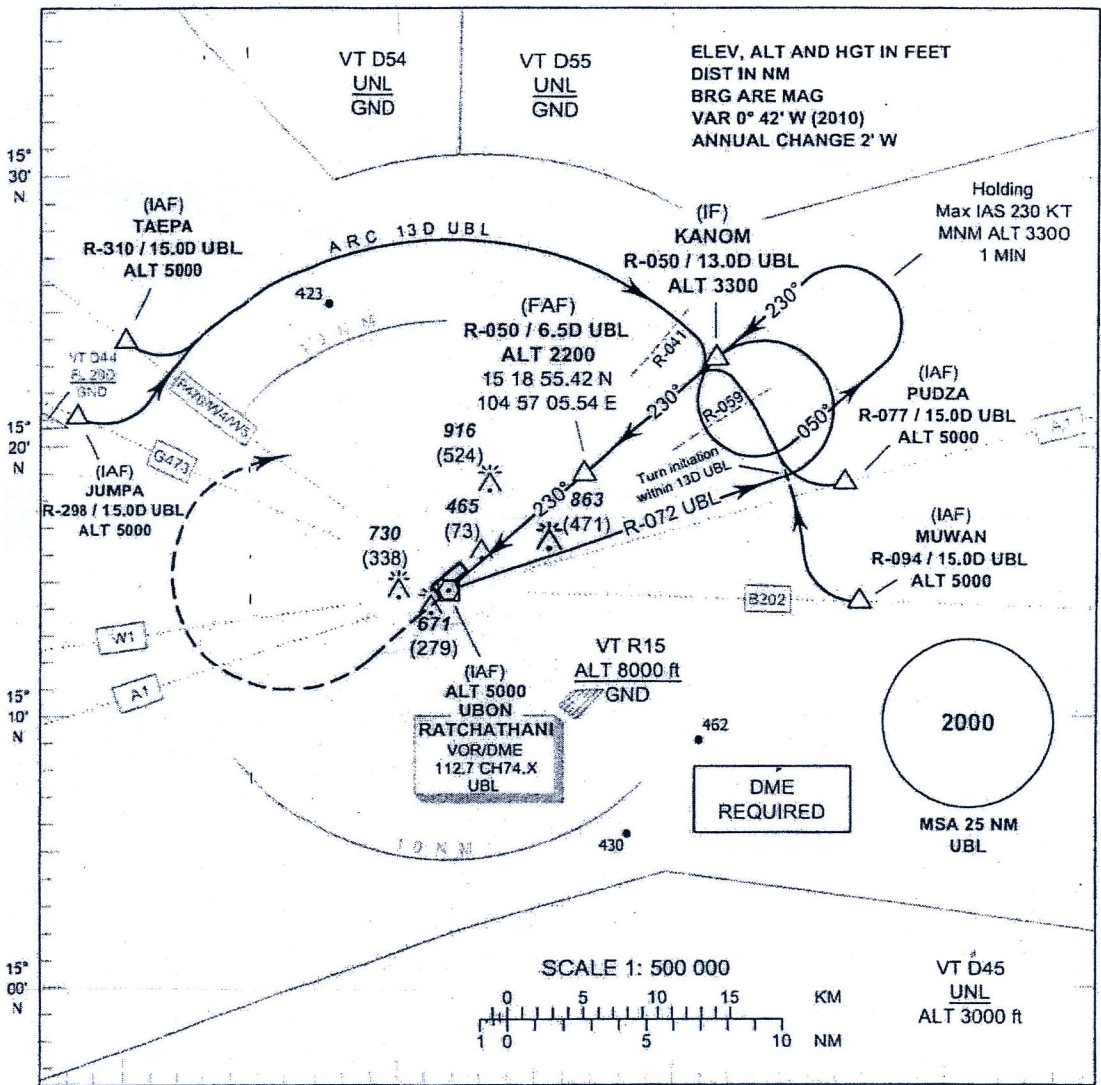


INSTRUMENT APPROACH CHART - ICAO
 AIRCRAFT ELEV 406 FT
 HEIGHTS RELATED TO THR RWY 23 - ELEV 392 FT

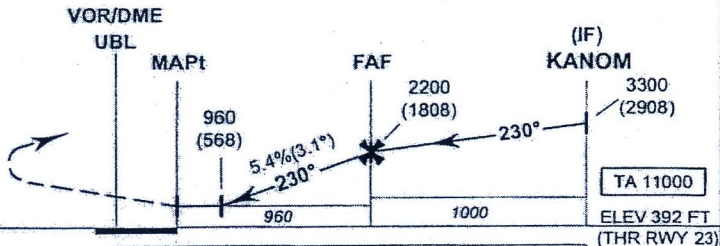
APP : 123.5, 257.8
 TWR : 119.9, 274.5
 GND : 121.9, 275.8

UBON RATCHATHANI /
 Ubon Ratchathani (VTUU)
 VOR RWY23



MISSED APPROACH:
 No turn before MAPt.
 Climb straight ahead to 1400 (1008) FT then turn right to intercept R-050 UBL /OR then proceed to IF at 3300 (2908) FT and hold or as directed by ATC.

Descent gradient not coincident with PAPI (3.0°).



DME FM VOR/DME	0	1.2	2.8	6.5	13.0
NM FM THR	0	1.6	5.3	11.8	

OCA/H	A	B	C	D	Distance (UBL)	2.8 D	3 D	4 D	5 D	6 D	FAF	
Straight - in Approach	960 (568)				Altitude (Height)	960 (568)	1030 (638)	1360 (968)	1690 (1298)	2015 (1623)	2200 (1808)	
					Ground speed (GS)	knot	100	120	140	160	180	200
	Circling (OCH AAL)				1350 (944)	Rate of descent (ft/min)	545	655	765	875	985	1095